

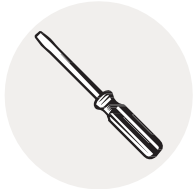


RAVEK

CAN-AM COMMANDER 2021+ **PLUG & PLAY AUTO-CANCEL UTV TURN SIGNAL KIT**

PART #: 65-500 FITMENT: CAN-AM COMMANDER 2021+

TOOLS NEEDED:



Flathead Screwdriver



Drill



T-30 Torx



T-40 Torx



10mm Socket



10mm Wrench



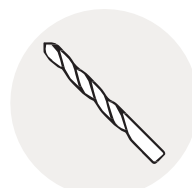
Side Cutter Pliers



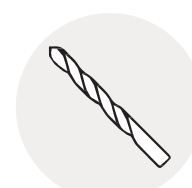
Ratchet



Push Pin Pliers



11/32" Drill Bit



1/4" Drill Bit

PARTS INCLUDED:

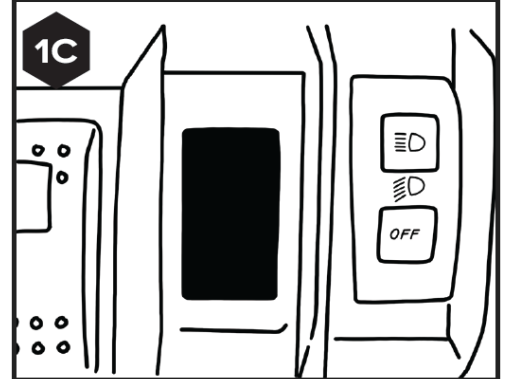
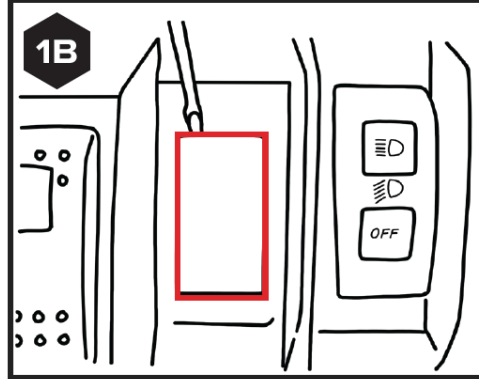
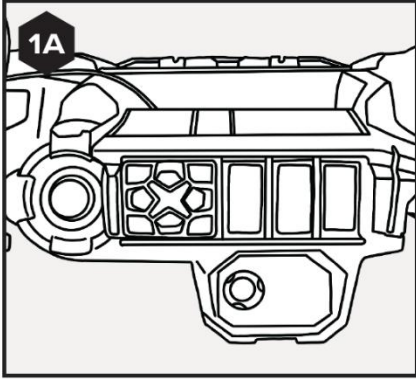
- Controller (1x)
- Apex Light (2x)
- Horn (1x)
- Power Harness (1x)
- Turn Switch (1x)
- Horn/Hazards Switch (1x)
- Switch Extension Harness (2x)
- Rear Extension Harness (1x)
- Rear Harness (1x)
- License Plate Harness (1x)
- License Plate Illuminator (1x)
- Dash Indicator Harness (2x)
- Dielectric Grease (1x)
- Heat Shrink (1x)
- Roll Bar Adaptor (2x)
- Strap (2x)
- M6 x 1.0 x 16mm Allen Screw (2x)
- Wire Ties (20x)
- Double Sided Tape Strip (2x)
- M6 Flat Washer (2x)
- M5 x 0.8 x 6mm Allen Screw (4x)
- M6 x 1.0 x 10mm Allen Screw (4x)
- Adhesive Promoter Wipe (3x)
- Rubbing Alcohol Wipe (3x)

INSTALL VIDEO TUTORIAL

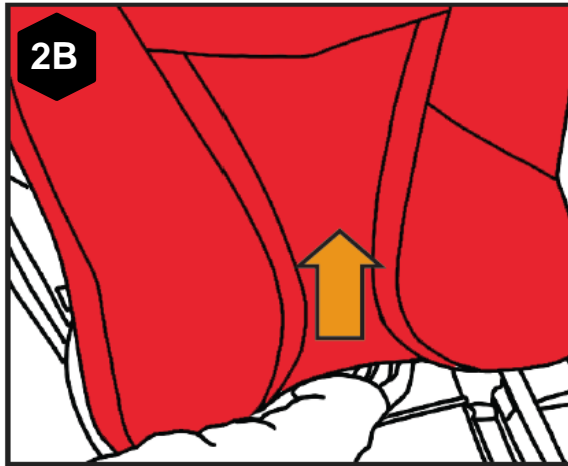
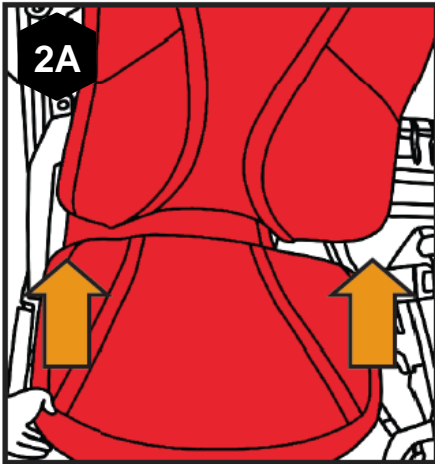
**CALL US WITH ANY
QUESTIONS: 855-617-2787**



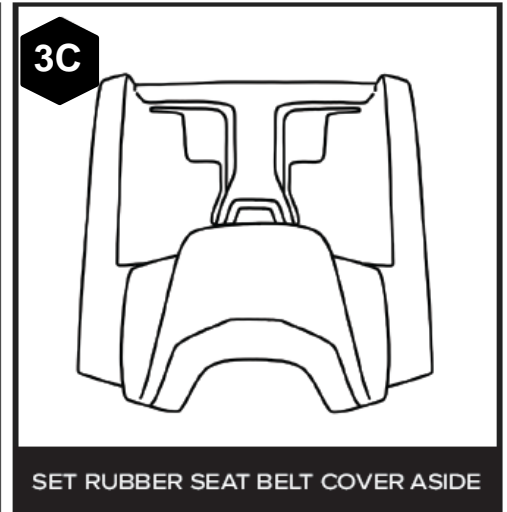
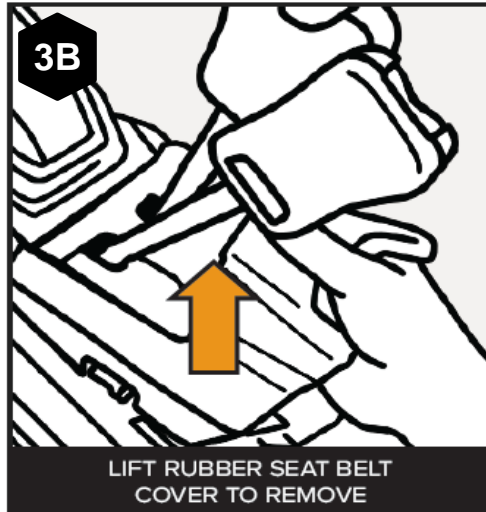
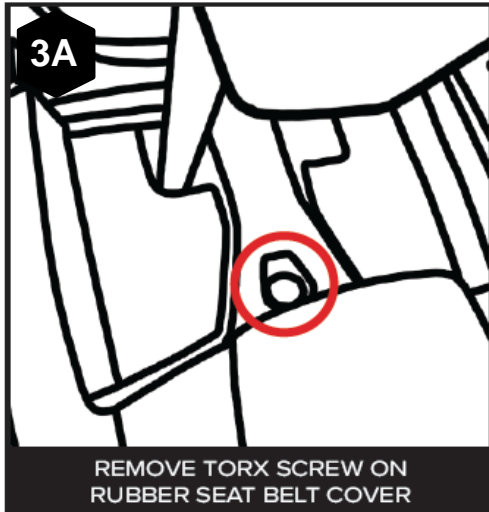
1) REMOVE TWO ROCKER SWITCH KNOCKOUTS



2) REMOVE SEAT PADS

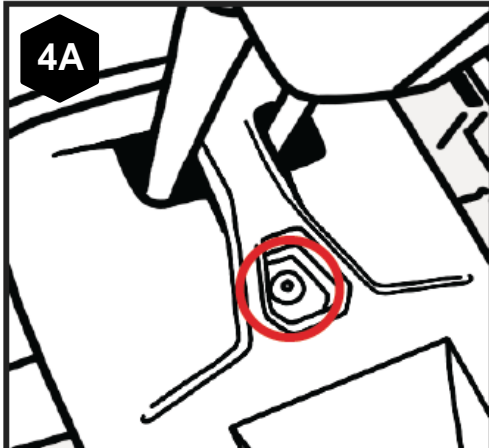


3) REMOVE FRONT SEAT BELT COVER



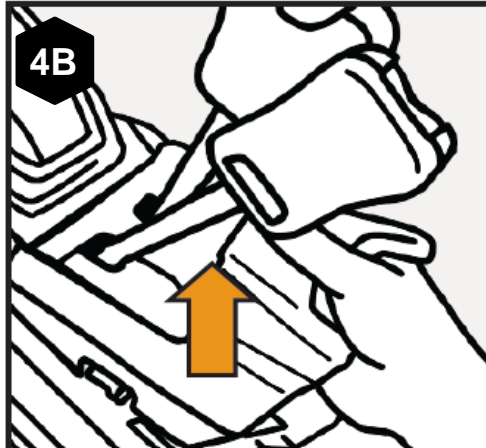
4) REMOVE REAR SEAT BELT COVER (4-SEATER MODELS)

4-SEAT MODELS ONLY



4A

REMOVE TORX SCREW ON RUBBER SEAT BELT COVER



4B

LIFT RUBBER SEAT BELT COVER TO REMOVE



4C

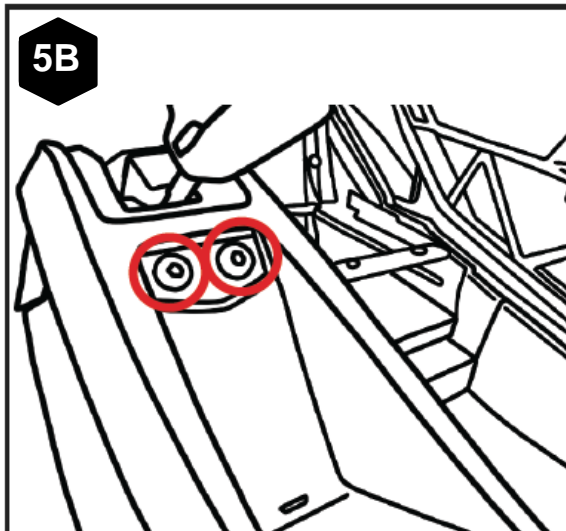
SET RUBBER SEAT BELT COVER ASIDE

5) REMOVE SHIFTER LEVER COVER PANEL



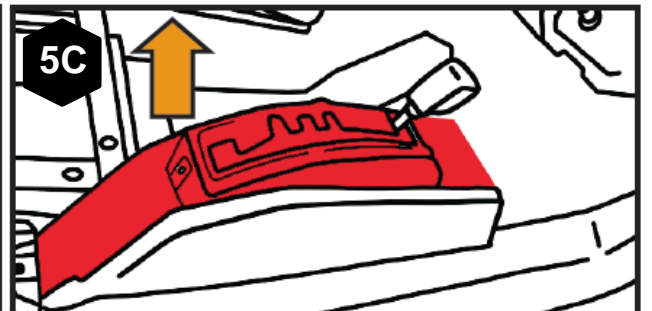
5A

BEHIND SHIFTER LEVER



5B

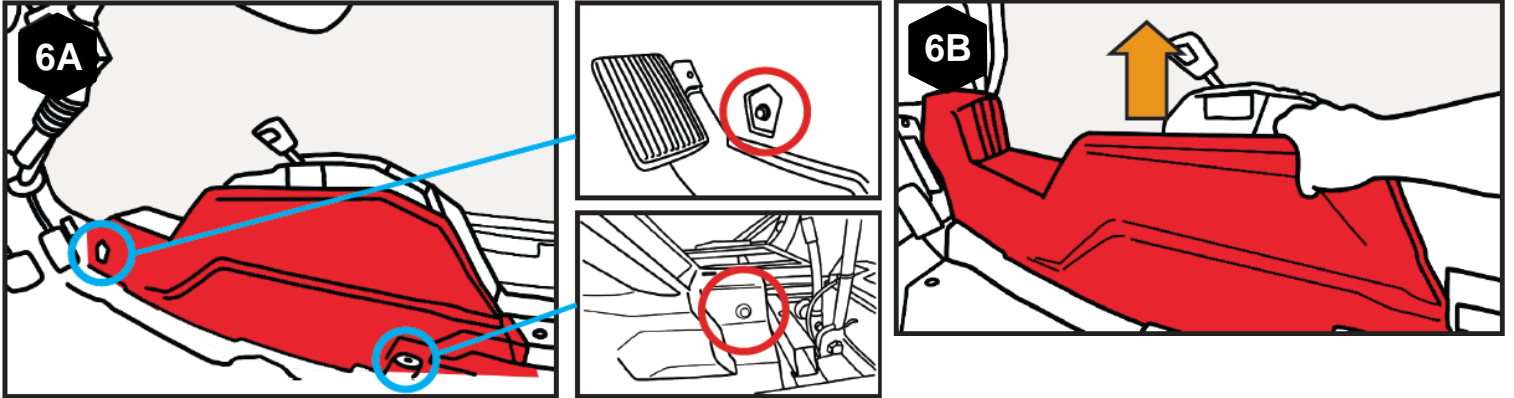
IN FRONT OF SHIFTER LEVER



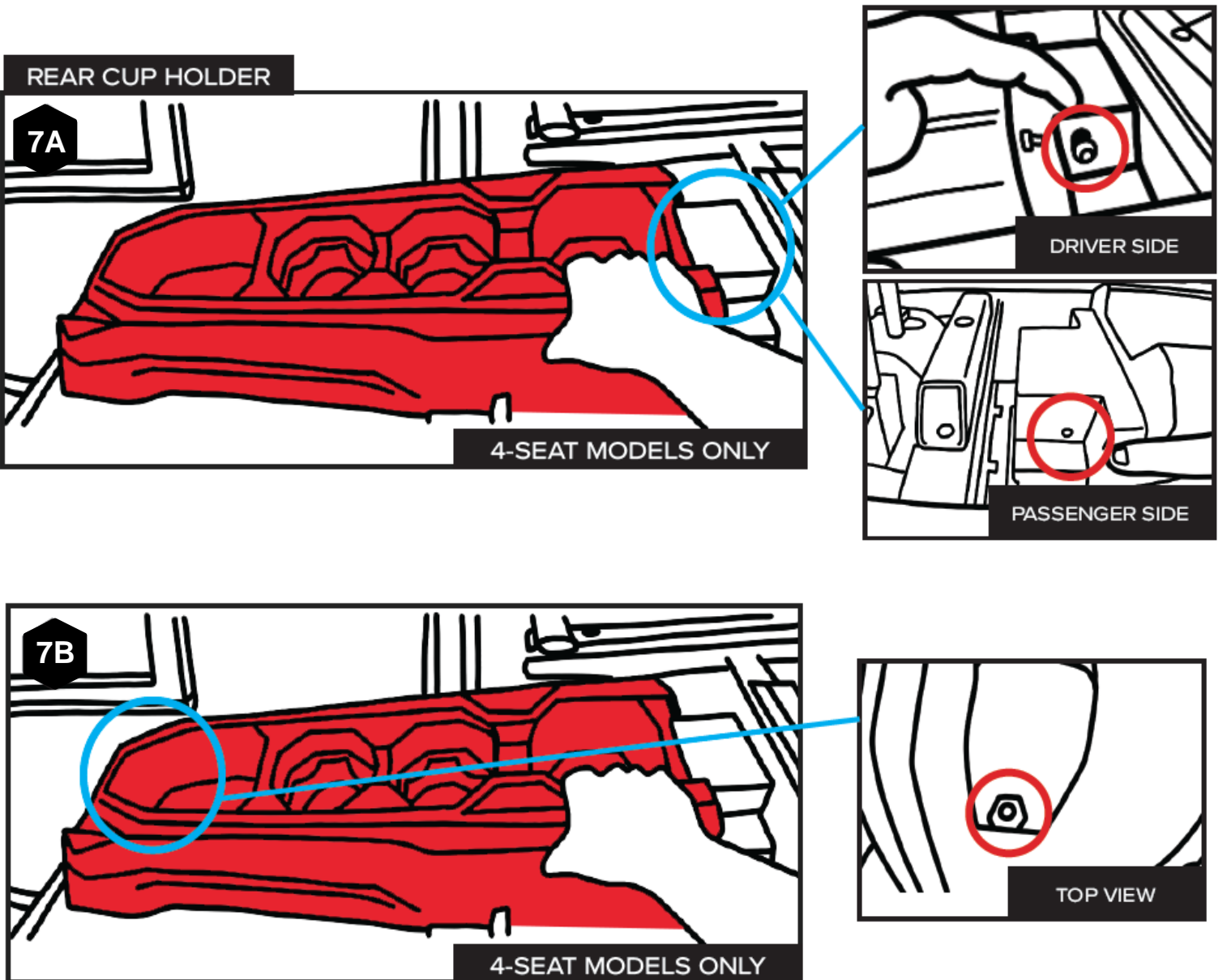
5C

LIFT UP TO REMOVE SHIFTER LEVER COVER PANEL

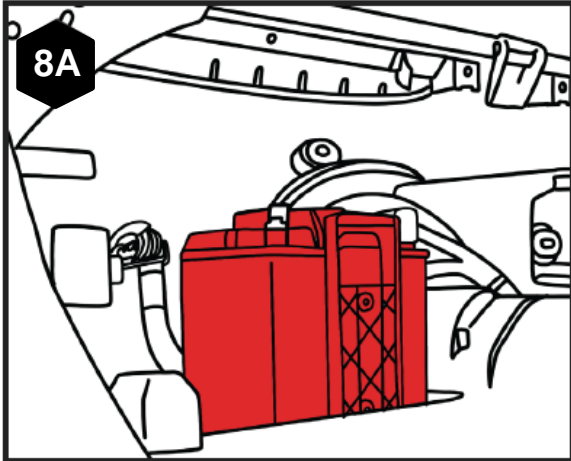
6) REMOVE CENTER TUNNEL SIDE COVER



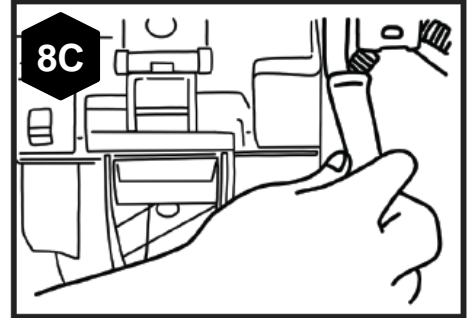
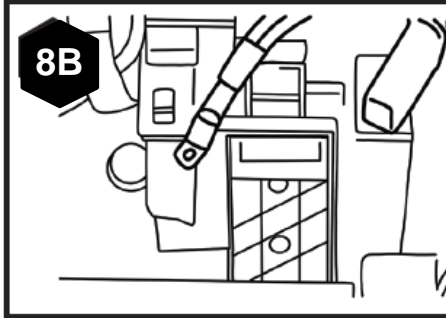
7) REMOVE CUP HOLDER PANEL



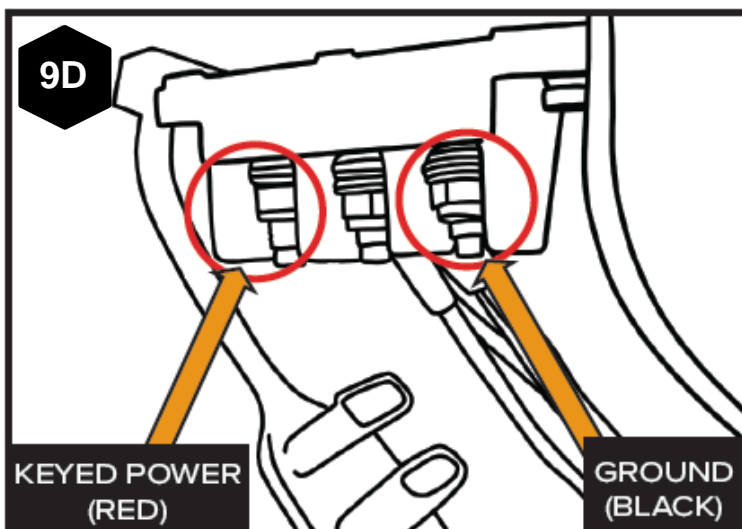
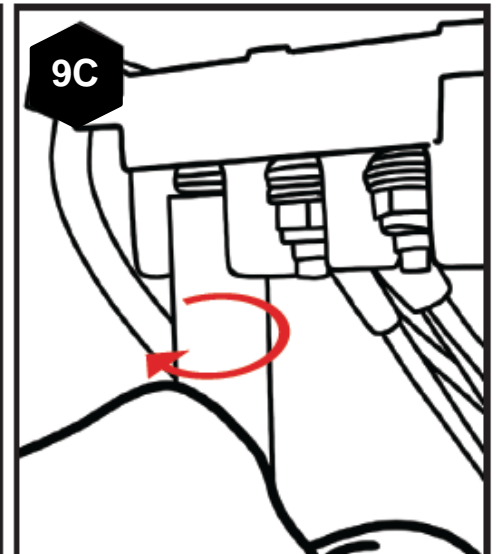
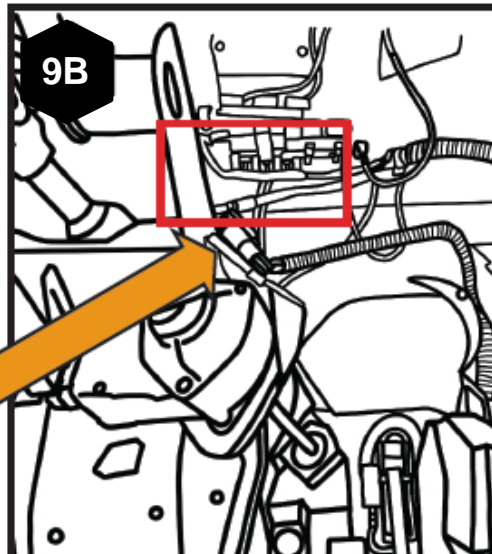
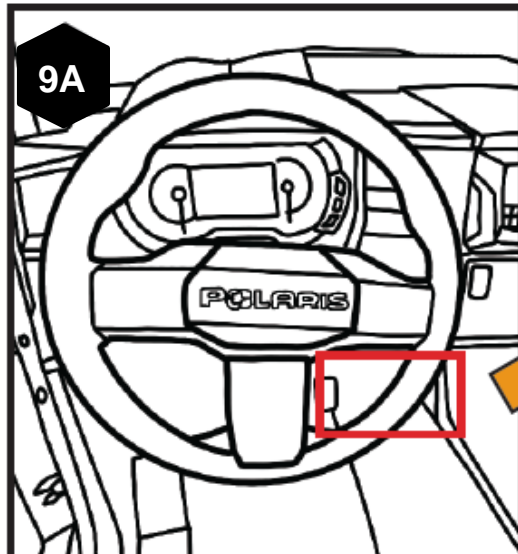
8) DISCONNECT BATTERY



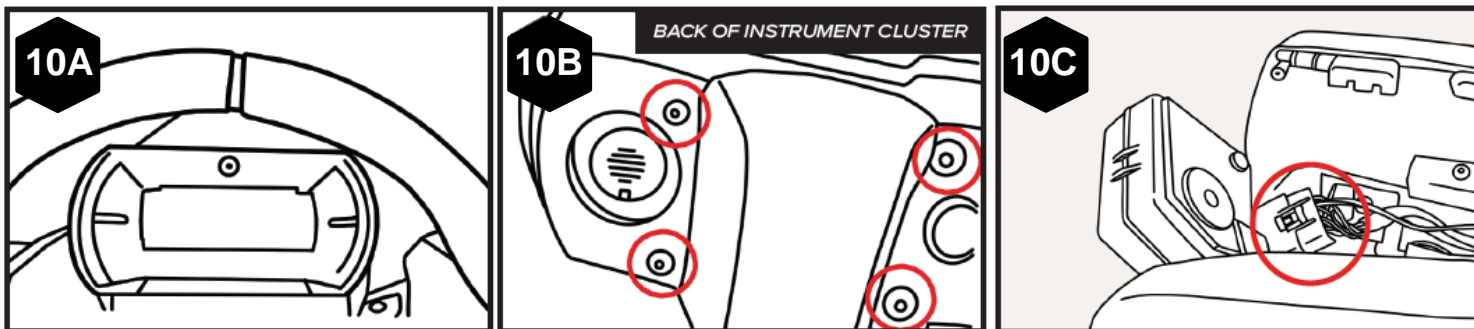
DISCONNECT NEGATIVE BATTERY TERMINAL FIRST



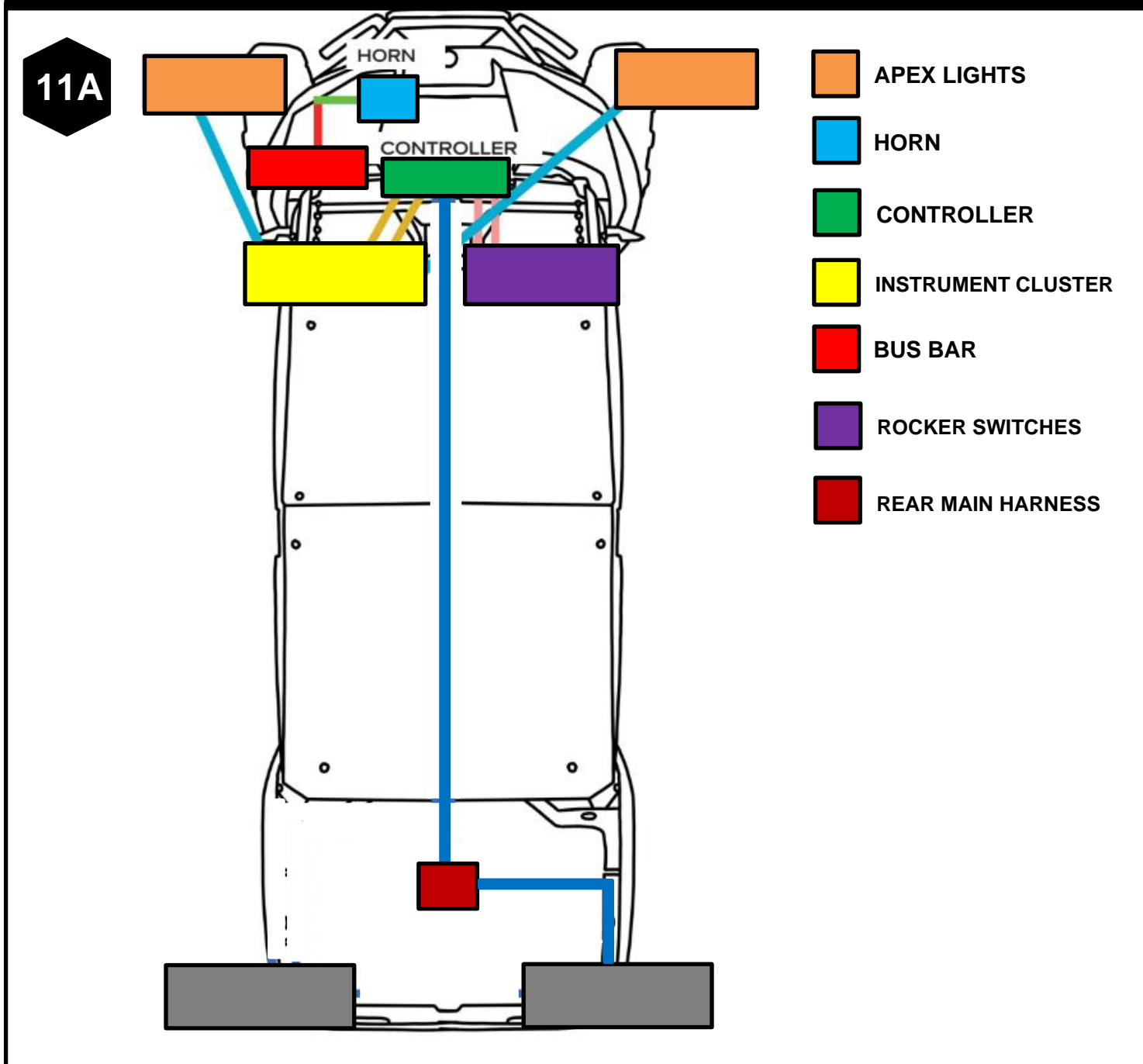
9) ACCESS BUS BAR



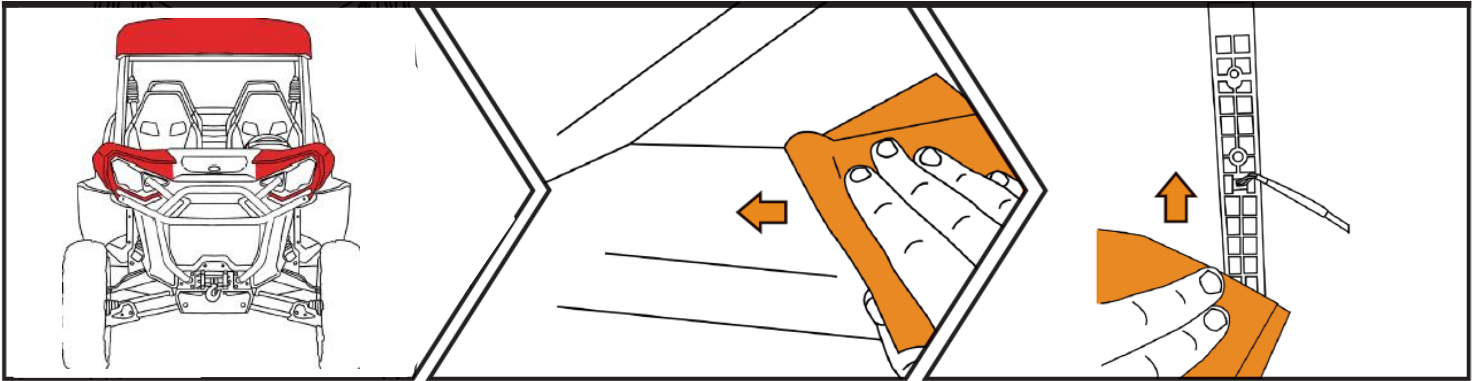
10) UNPLUG INSTRUMENT CLUSTER



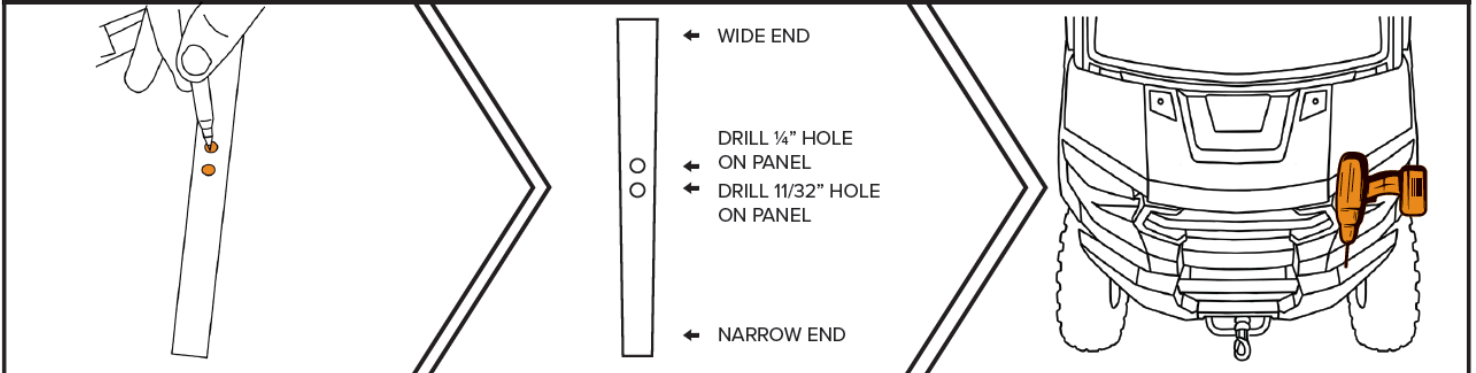
11) RUN WIRING AS SEEN IN OVERVIEW



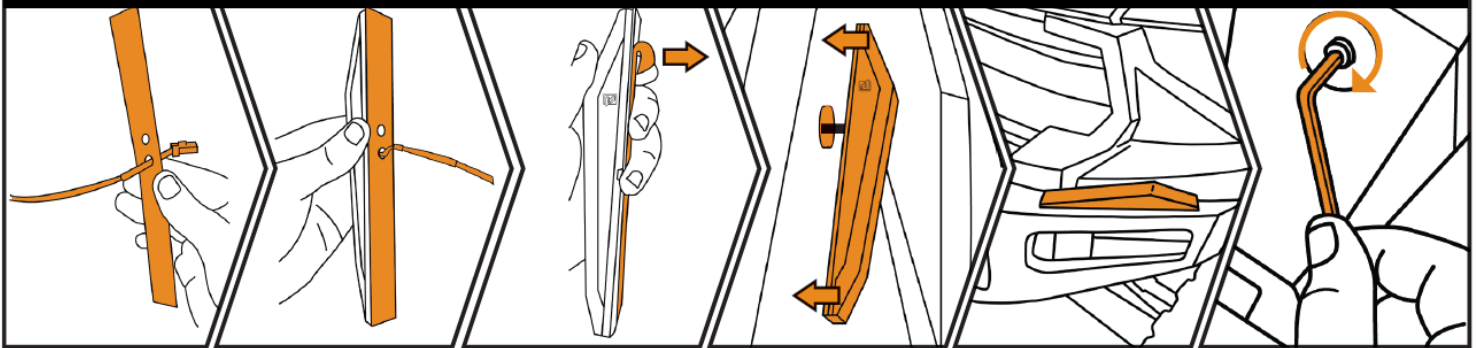
12) FLAT SURFACE MOUNT APEX LIGHTS TO UTV



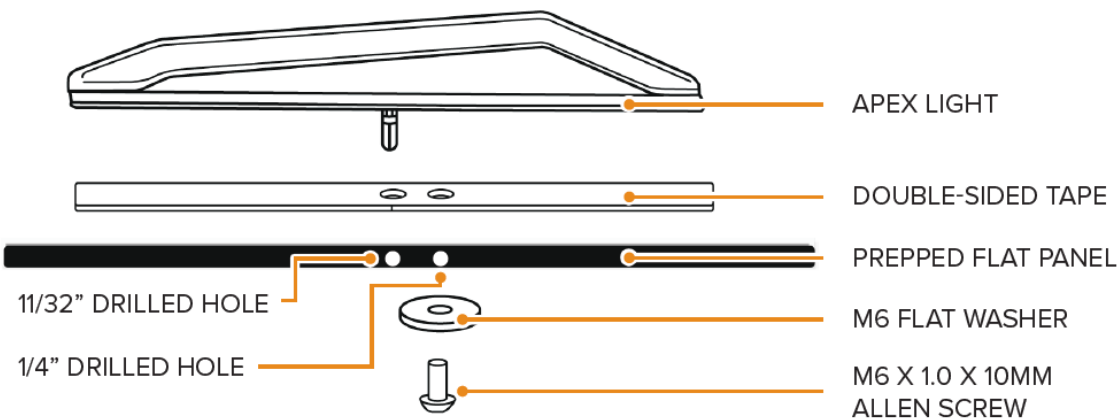
MARK AND DRILL APEX LIGHT MOUNTING HOLES



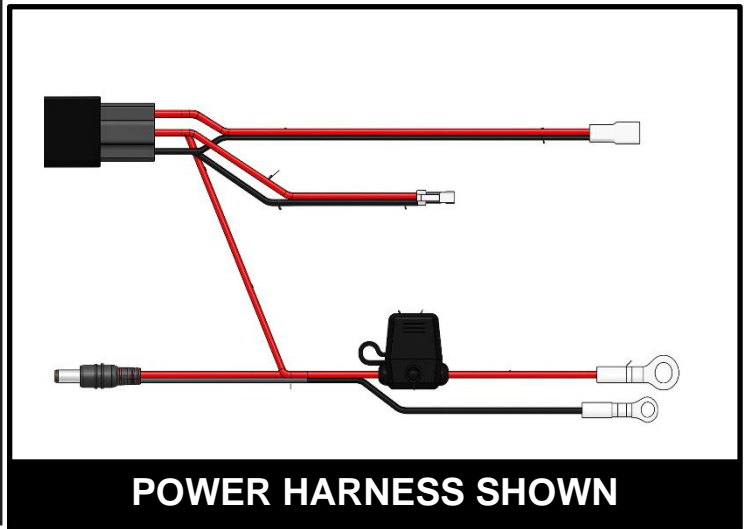
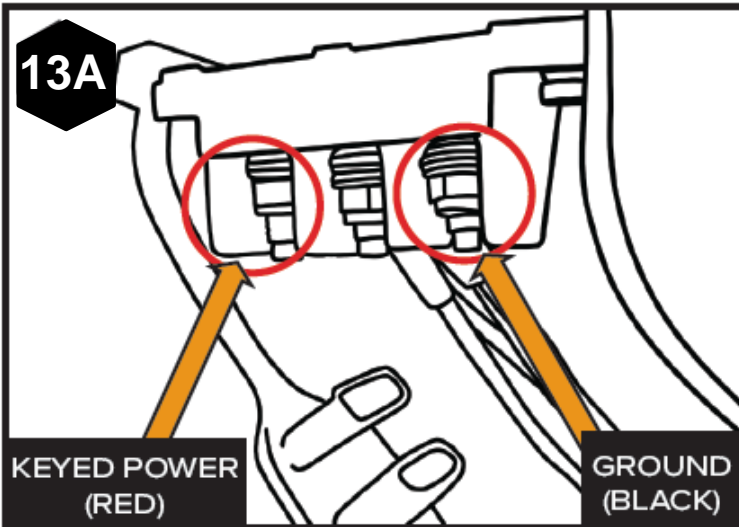
INSTALL TAPE TO LIGHT BASE, STICK LIGHT TO CHOSEN SURFACE AND TIGHTEN HARDWARE



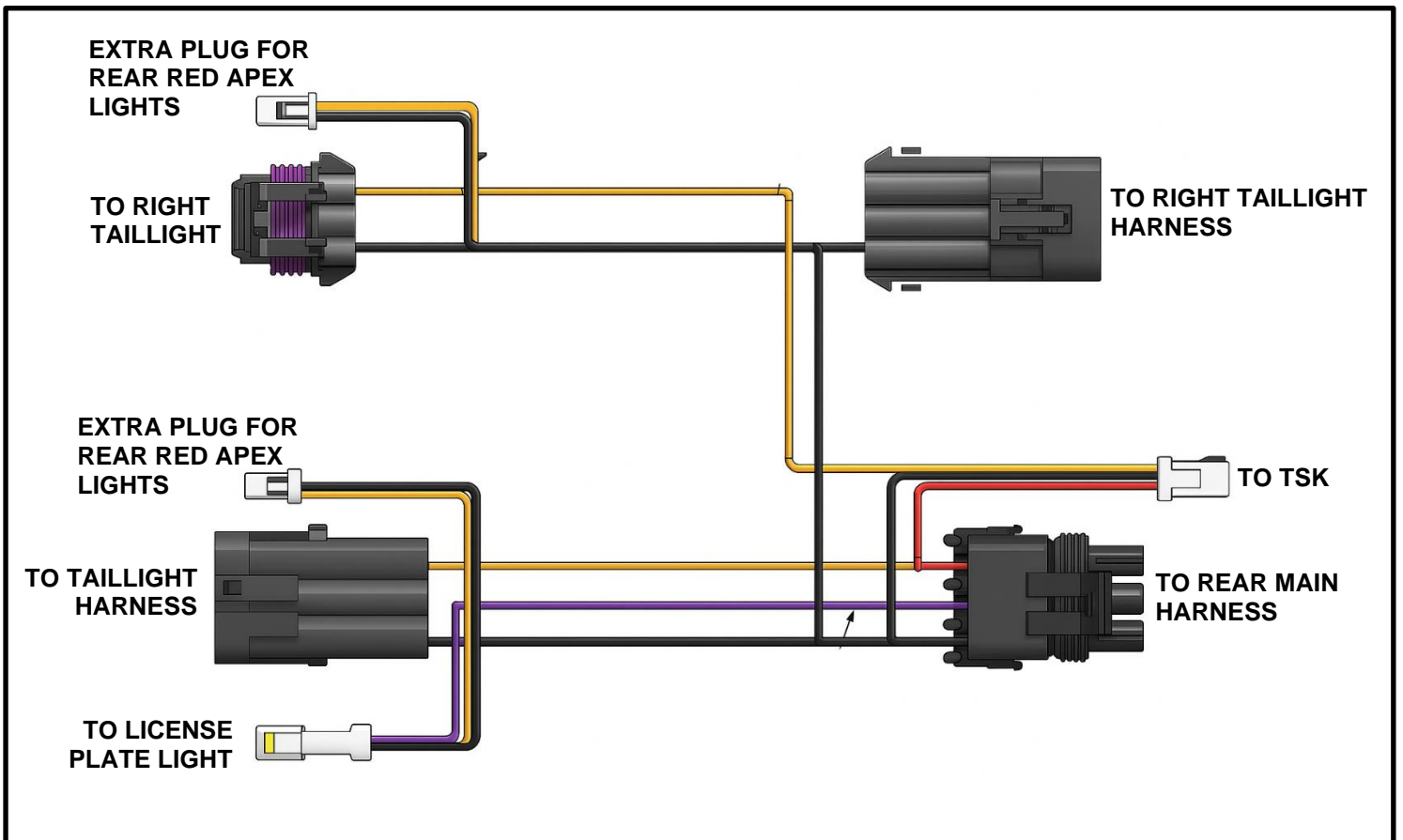
EXPLODED VIEW OF MOUNTING OPTION A



13) HOOK UP POWER HARNESS TO BUS BAR



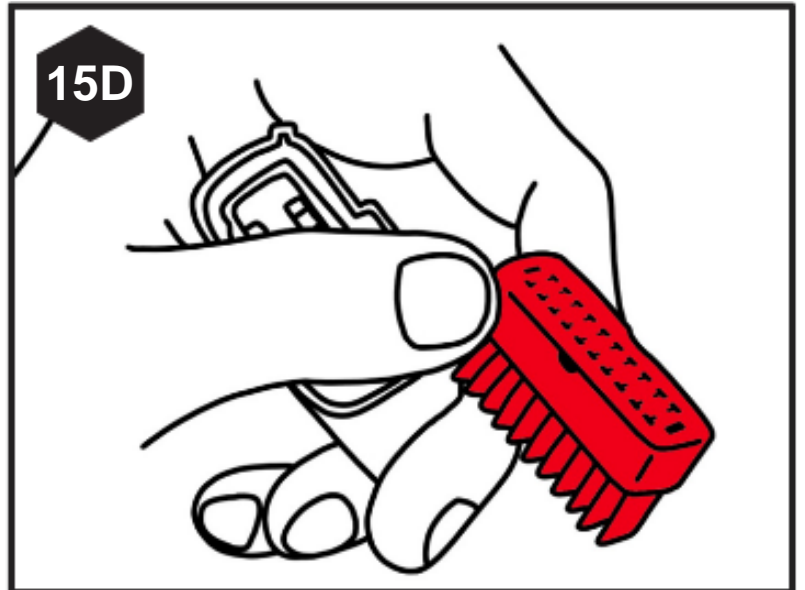
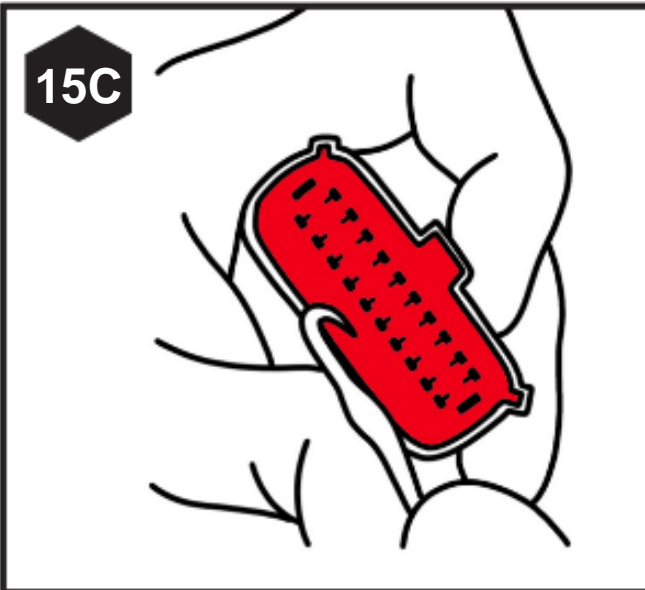
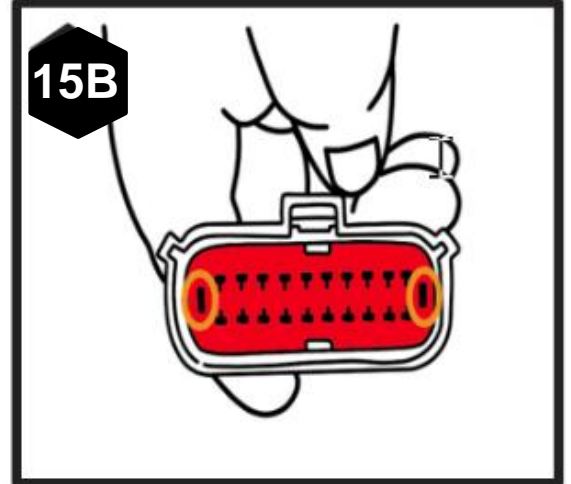
14) INSTALL MULTIPIN HARNESS TO REAR OF UTV



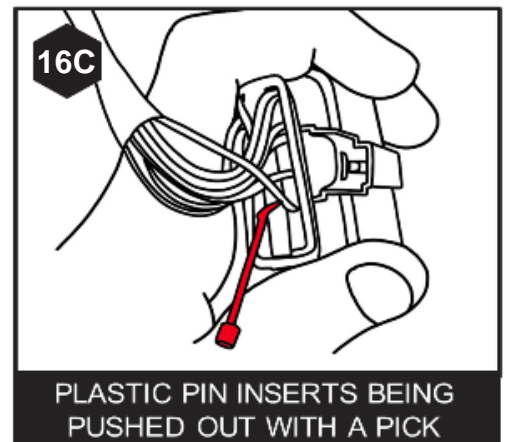
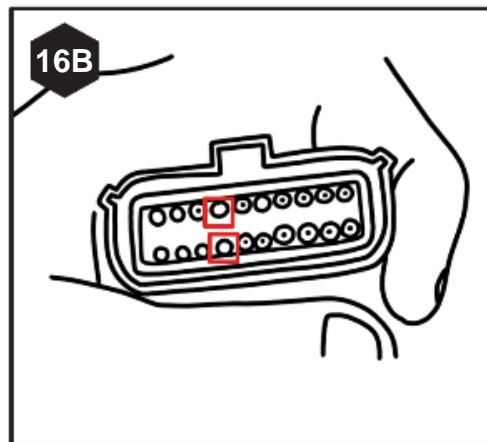
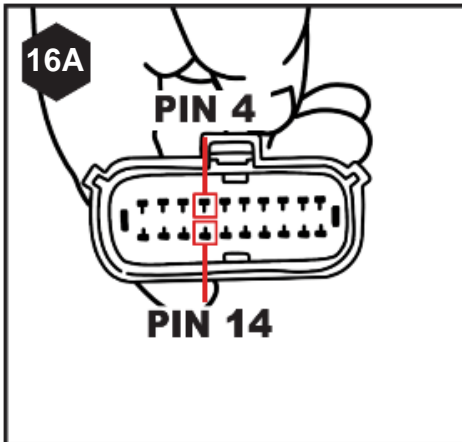
NOTE:

IF YOUR UTV ALREADY HAS REAR RED APEX LIGHTS INSTALLED AND YOU PLAN TO CONNECT THEM TO THE TSK, BE SURE TO REMOVE ANY FLASHER MODULATORS BEFOREHAND. THIS WILL PREVENT BACKFEEDING OR HYPERFLASH ISSUES.

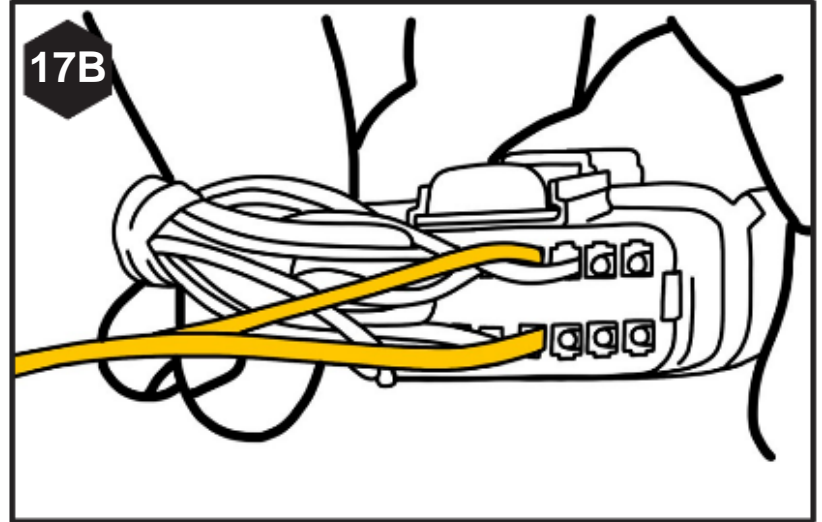
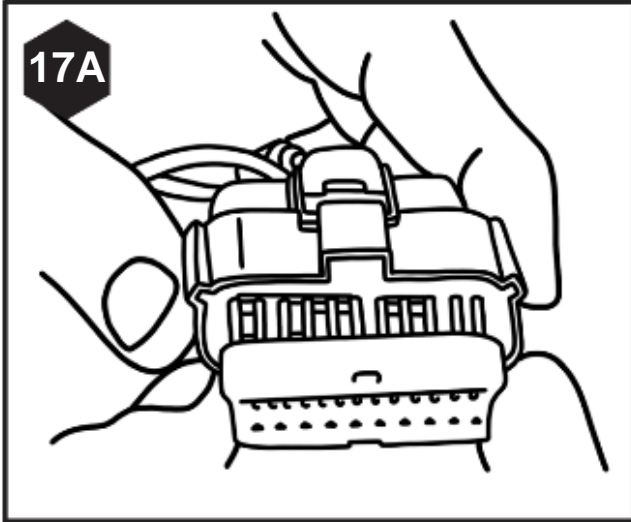
15) REMOVE INSTRUMENT CLUSTER PLUG COVER



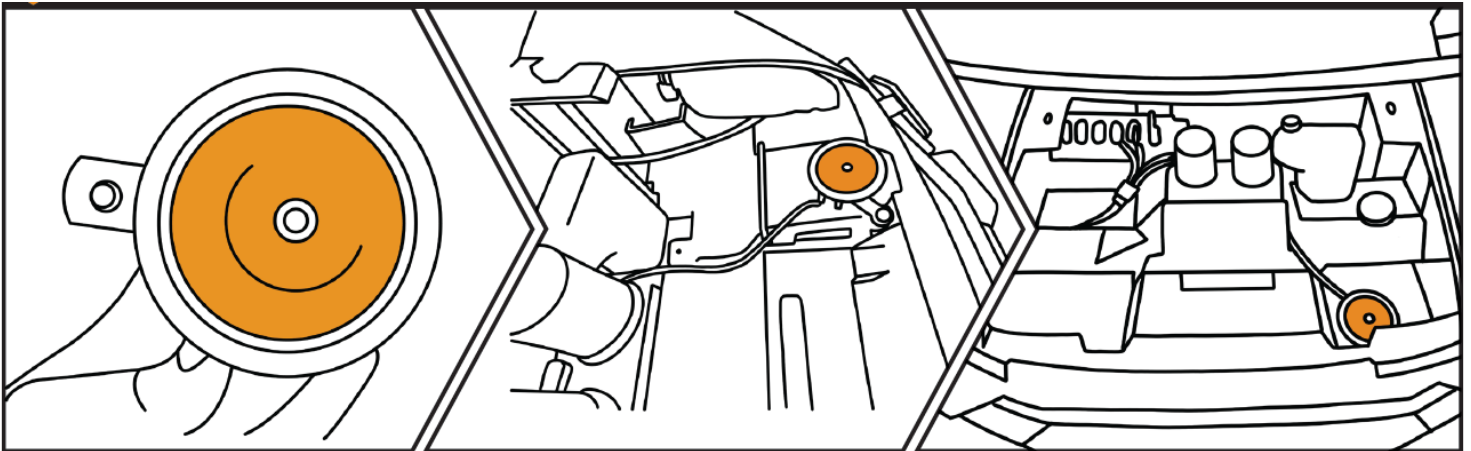
16) REMOVE PIN 4 & 14



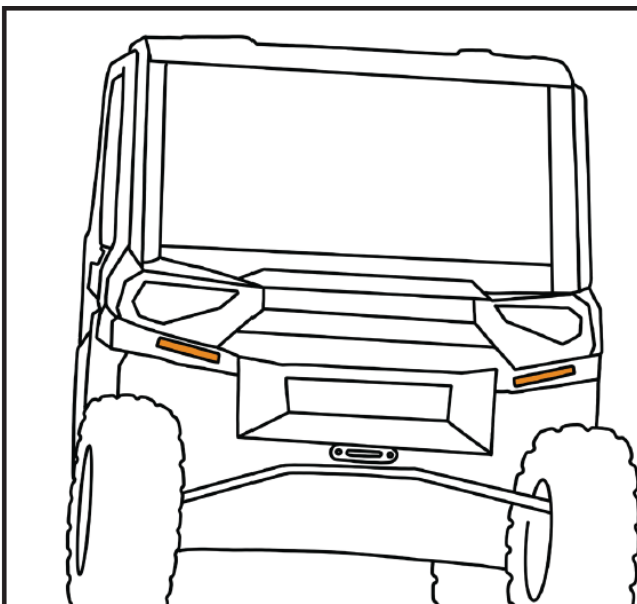
17) RIGHT DI > PIN 4, LEFT DI > PIN 14



18) INSTALL HORN REUSING OEM SCREW FROM UNDER THE HOOD

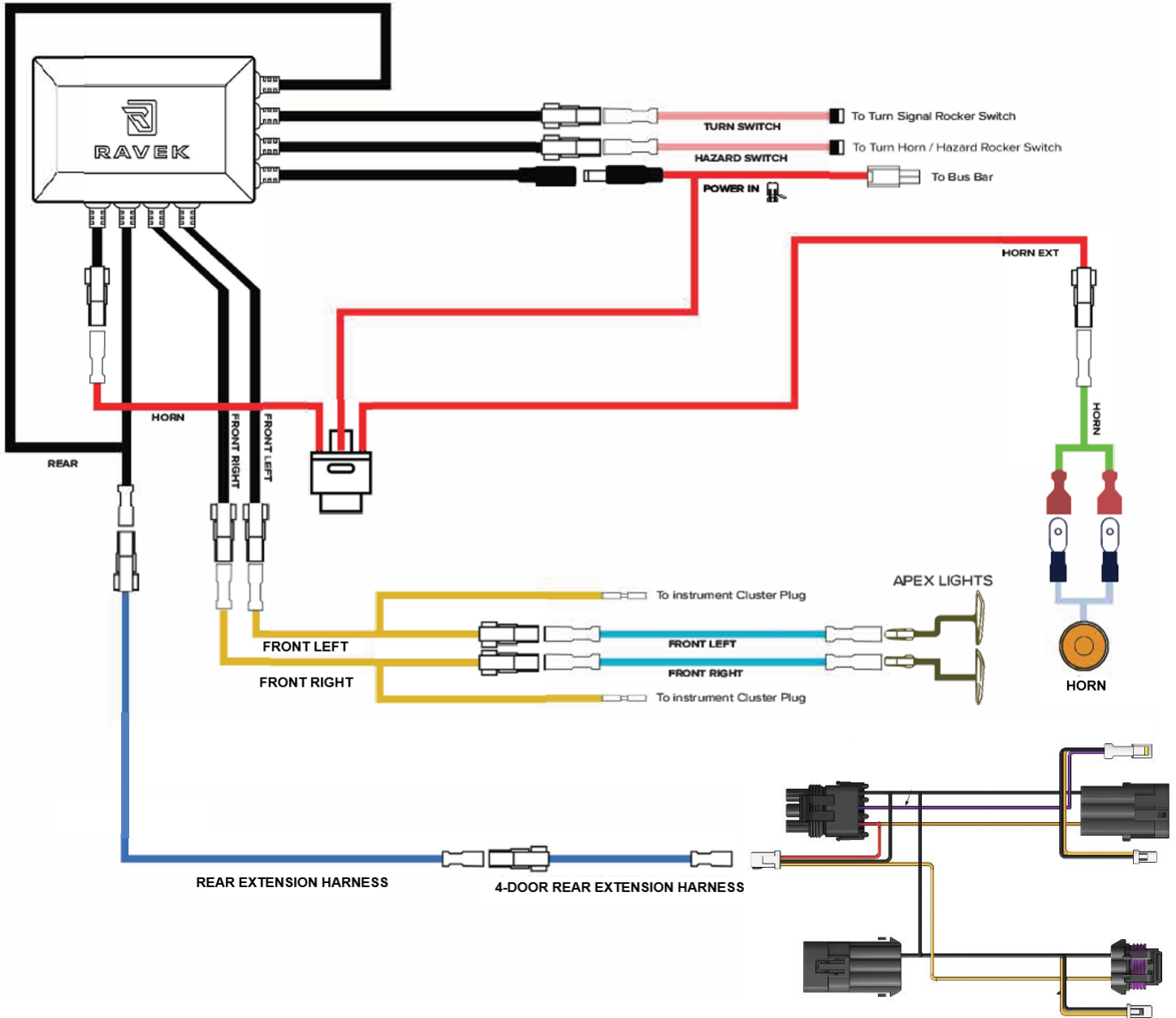


19) TEST YOUR TSK & TIDY UP YOUR MACHINE



- Running brake lights
- Running white lights
- Brake light w/ pulse effect
- Left turn signal:
 - Push Once: Activates a 20-second auto-cancel timer.
 - Push Twice: Extends the timer to 40 seconds.
 - Push Three Times: Sets the timer to 90 seconds.
- Left turn signal dash indicator
- Right turn signal:
 - Push Once: Activates a 20-second auto-cancel timer.
 - Push Twice: Extends the timer to 40 seconds.
 - Push Three Times: Sets the timer to 90 seconds.
- Right turn signal dash indicator
- Hazards
- Horn

20) TSK WIRING DIAGRAM OVERVIEW





RAVEK

BUILT FOR MORE

WHY RAVEK

Stock UTVs don't come with enough storage, lighting, comfort, and protection. That's why we started RAVEK.

We live to design, manufacture, and test innovative SxS upgrades that elevate the riding experience. Here's what you can expect from us:

- Durable products built to last (100% lifetime guarantee)
- UTV upgrades thoughtfully designed & tested by riders
- Outstanding installation support (videos & USA customer service)
- Constant flow of epic riding content (check out our social media)

We're confident your RAVEK product will earn its place on your machine. Please call or e-mail us if we can help.

- Harry & Ricky (Brothers & Owners)

MESSAGE FROM THE DESIGNER

All UTVs come without turn signals, and even though you can ride them on the road, people need to make hand signals to indicate to other riders that you are making a turn! Not only is it tiring, but not safe!

That is why I created this kit: you can easily install a turn signal kit to your UTV, add some personality to your ride, and make your ride safe at any time of the day.