



34935 Flyover Ct. Bakersfield, CA 93308
Phone: (661) 588-8085 | Fax: (661) 588-8295

INSTALL INSTRUCTIONS:

Cognito Spare Tire Carrier
for 2014+ Polaris RZR XP1000/XP Turbo/XP
Turbo S with Cognito Recreation Cage

SKU: 360-91021



PARTS LIST FOR SKU: 360-91021

QUANTITY	PART #	DESCRIPTION
1	8751	Swing Frame, Driver
1	8752	Swing Frame, Passenger
2	8753	Cross Bar
2	8754	Foot Bracket Weldment
2	8808	Striker Mount
1	2863LEFT	Flag Mount Brace, Driver
1	2863RIGHT	Flag Mount Brace, Passenger
1	2864LEFT	Support Bracket, Driver
1	2864RIGHT	Support Bracket, Passenger
2	6867	60lb Gas Lifting Strut
1	6868	Ratchet Y-Strap
1	HP9299	Hardware Pack 9299
1	HP9300	Hardware Pack 9300
1	HP9312	Hardware Pack 9312
1	INST7336	Install Instructions

WARNING

Please read this entire instruction sheet before beginning installation. Proper installation of these components requires a qualified mechanic. Always wear safety glasses when using power tools and take appropriate precautions when working under a vehicle. If these instructions are not properly followed you may jeopardize your and your passenger's safety. Failure to properly follow these instructions can also lead to severe frame, suspension, tire, or other vehicle component damage.

REQUIREMENTS

- This kit is only compatible with vehicles using Cognito Recreation Roll Cages.
- Always wear safety glasses when using power tools.
- When a lift is required to perform the installation of these products and always ensure the vehicle is properly supported before attempting installation or serious injury may occur.

TECHNICAL INFORMATION

- Read instructions carefully and study the pictures before attempting installation.
- Check the parts and hardware packages against the parts list to ensure that your kit is complete.
- Work through these instructions on both sides of vehicle at the same time to completion. The order of the steps is important.

PARTS LIST FOR HP9299

QTY.	PART #	DESCRIPTION
1	5042	Center Crush Sleeve
2	5548	Pivot Tube Crush Sleeve
2	HARDWARE-15118	3/8"-16 X 3-3/4" Hex Bolt
4	HARDWARE-15163	7/16"-14 X 2-1/2" Hex Bolt
1	HARDWARE-15165	7/16"-14 X 3" Hex Bolt
4	HARDWARE-33082	3/8" Flat Washer
10	HARDWARE-33084	7/16" Flat Washer
2	HARDWARE-37264	3/8"-16 Lock Nut
5	HARDWARE-37266	7/16"-14 Lock Nut
2	HARDWARE-PLUG-1.25	Plastic Cap Plug
4	Poly-Bushings-1.25x.120x.625-94D	Pivot Tube Poly Bushing

PARTS LIST FOR HP9300

QTY.	PART #	DESCRIPTION
2	2918	Two-Hole Latch Washer
2	5030	Aluminum Standoff
1	6869	Righthand Latch
1	6870	Lefthand Latch
2	HARDWARE-15002	1/4"-20 X 5/8" Hex Bolt
2	HARDWARE-15107	3/8"-16 X 1-1/4" Hex Bolt
10	HARDWARE-33078	1/4" Flat Washer
6	HARDWARE-33080	5/16" Flat Washer
4	HARDWARE-33082	3/8" Flat Washer
4	HARDWARE-33618	1/4" Split Lock Washer
6	HARDWARE-37262	5/16"-18 Lock Nut
2	HARDWARE-37264	3/8"-16 Lock Nut
4	HARDWARE-93205	1/4"-20 X 1" Socket Head Bolt
2	HARDWARE-1/4-20-NYLOCK-JAM	1/4"-20 Jam Nut
2	HARDWARE-M6X45-BH	M6 X 1.0 X 45mm Button Head Bolt
2	HARDWARE-5/16-18-CB	5/16"-18 X 3/4" Square-Neck Carriage Bolt

PARTS LIST FOR HP9312

QTY.	PART #	DESCRIPTION
8	HARDWARE-1/4-20-NYLOCK-JAM	1/4"-20 Jam Nut
8	HARDWARE-15002	1/4"-20 X 5/8" Hex Bolt
16	HARDWARE-33078	1/4" Flat Washer

TOOLS YOU WILL NEED

- Ratchets
- Ratchet Socket Extensions
- Sockets
 - 7/16"
 - 1/2"
 - 9/16"
 - 5/8"
 - 11/16"
 - 17mm
- Wrenches
 - 13mm
 - 15mm
- Torx Bit
 - T40
- Hex Bit
 - 3/16"
 - 4mm

INSTALLATION

1. Use a T40 Torx bit to remove four Torx bolts securing rear of bedliner near “FLAG” markings as shown in **Figure 1**, two per side. Take care to not drop any clips that these bolts thread into under bedliner.



2. Locate the following:

- 1x **2863LEFT** – Flag Mount Brace, Driver
- 1x **2863RIGHT** – Flag Mount Brace, Passenger
- **Hardware Pack HP9300**
 - 2x **3/8"-16 X 1-1/4" Hex Bolt**
 - 4x **3/8" Flat Washer**
 - 2x **3/8"-16 Lock Nut**

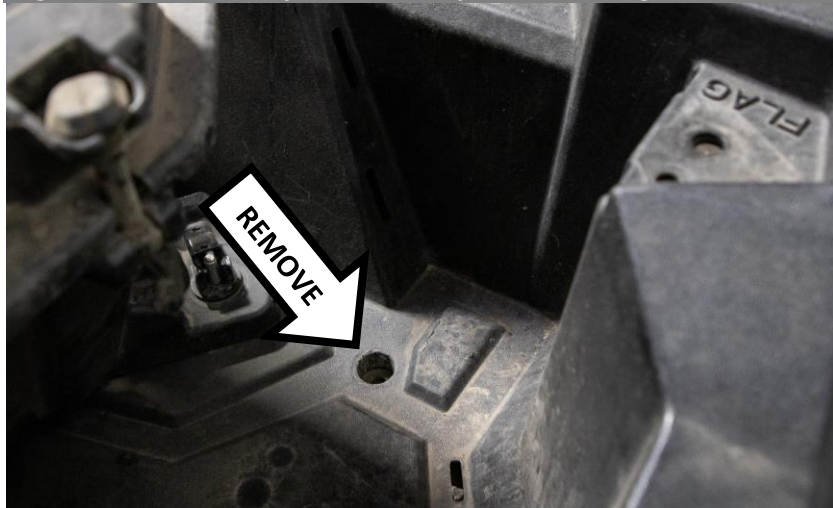
Use four factory Torx bolts and supplied hardware to fasten 2863LEFT (shown in **Figure 2**) and 2863RIGHT to bedliner. Tighten all hardware until secure but do not torque.

Figure 2: Flag mount brace install. Driver side shown.



3. In bedliner storage area, use T40 Torx bit to remove two outer rear bolts securing the bedliner, one per side. Bolts are in pockets at bottom of bedliner storage area.

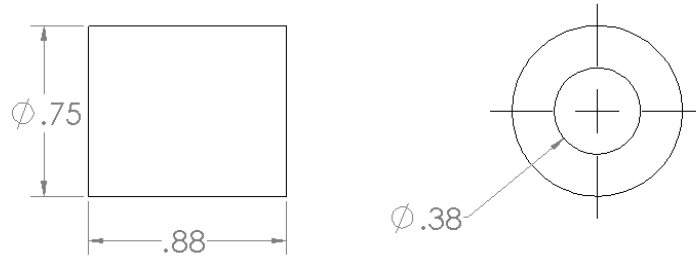
Figure 3: Remove bolt from bedliner pocket. Passenger side shown.



4. Locate the following:

- 2x **8754** – Foot Bracket Weldment
- **Hardware Pack HP9300**
 - 2x **M6 X 1.0 X 45mm Bolt**
 - 2x **1/4" Flat Washer**
 - 2x **5030** – Aluminum Spacer

Figure 4: Aluminum spacer 5030 dimensions.

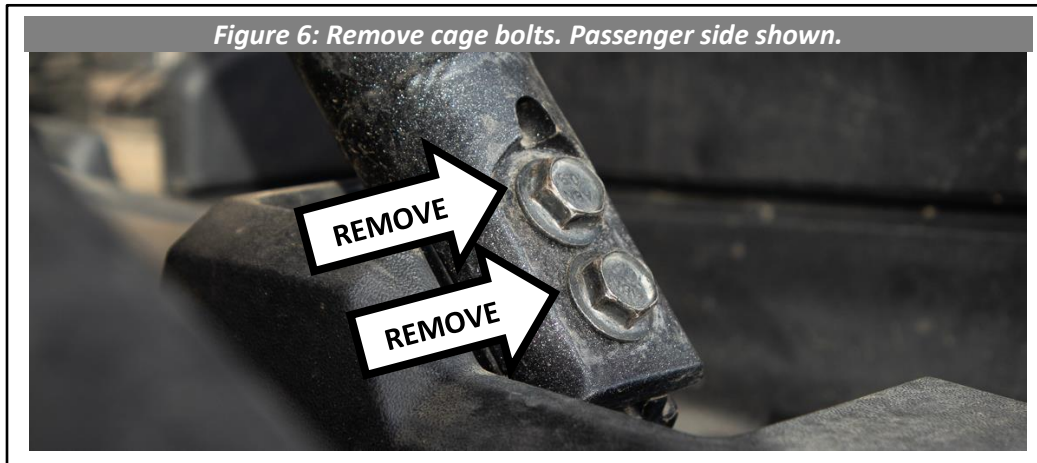


Clean any debris from bedliner pockets. Place one 5030 spacer into each pocket in the bedliner. Pass M6 bolts through 1/4" washers, foot brackets, then spacers, and thread into chassis. Orient foot bracket as shown in **Figure 5**. Long slot should be vertical. Tighten until secure but do not torque.

Figure 5: 8754 installed on passenger side. Note orientation of bracket.

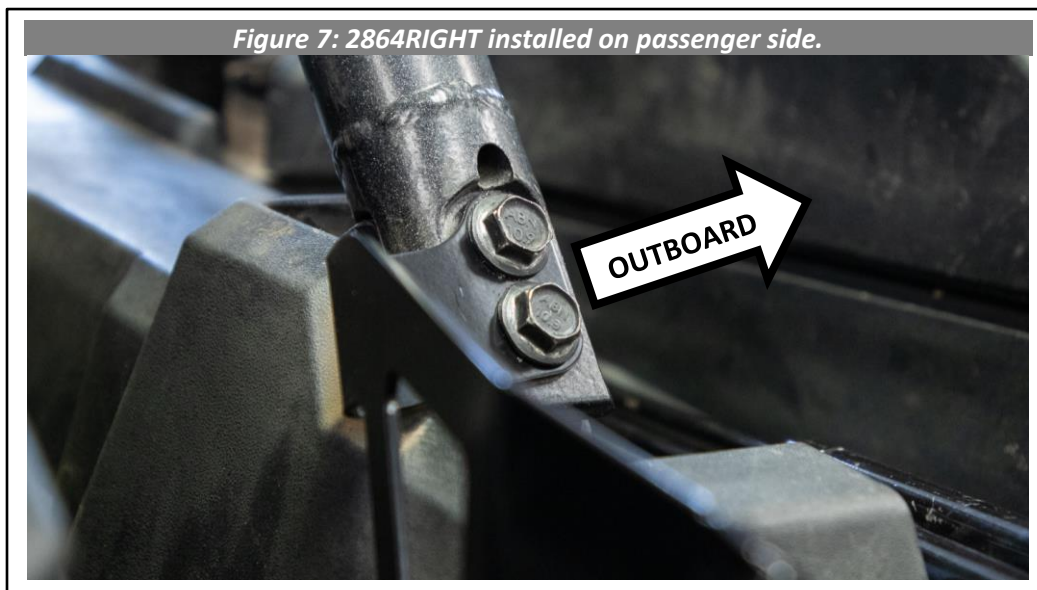


5. Use a 15mm socket to remove four factory bolts fastening the roll cage to chassis. **IMPORTANT: A Cognito roll cage is required for the installation of this spare tire carrier. If a Cognito roll cage is not installed on your vehicle, install it at this step before proceeding.**



6. Locate the following:
- 1x **2864LEFT** – Support Bracket, Driver
 - 1x **2864RIGHT** – Support Bracket, Passenger

Insert the factory cage hardware through 2864LEFT and 2864RIGHT support brackets and cage as shown in **Figure 7**, but do not torque. Orient each bracket such that flange being bolted to cage bends **outboard**. Support brackets touch **outboard** vertical face of foot bracket, shown in **Figure 8**, and **inboard** vertical face of flag mount braces, shown in **Figure 9**.



7. Locate the following:

- **Hardware Pack HP9300**
 - 2x 5/16"-18 X 3/4" Square-Neck Carriage Bolt
 - 2x 5/16" Flat Washer
 - 2x 5/16"-18 Lock Nut

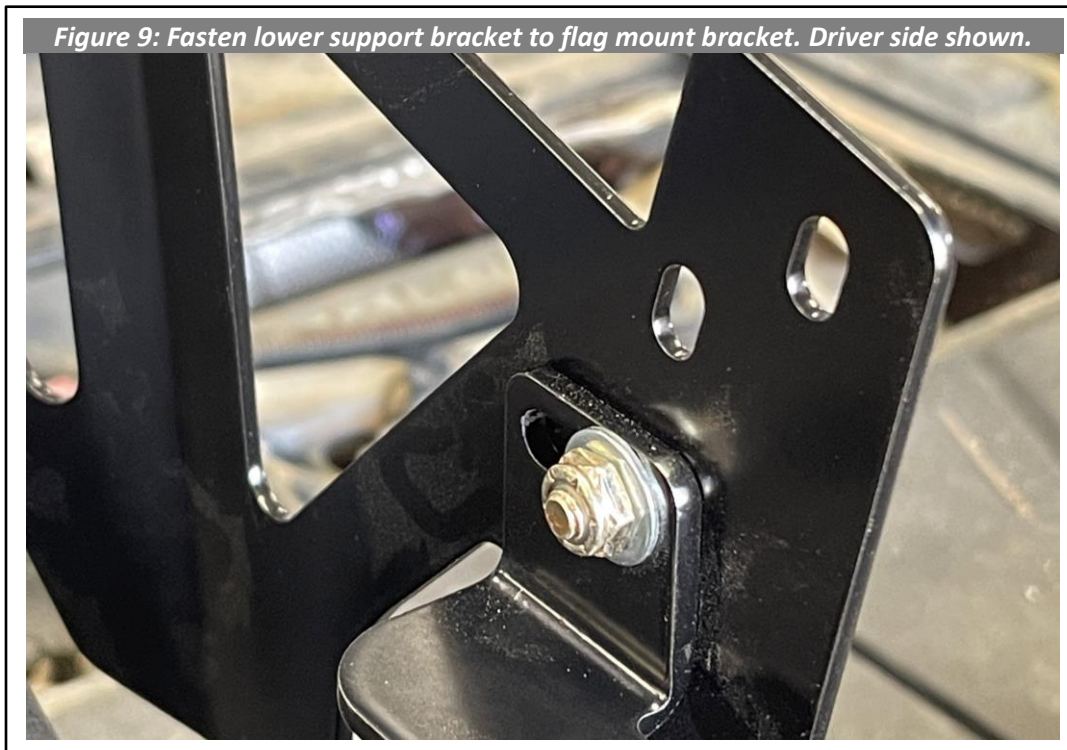
On each side of the vehicle, pass square-neck bolt through overlapping slots of support bracket and foot bracket. Insert bolt towards the center of the vehicle as shown in **Figure 8**. Tighten the lock nut and flat washer onto the bolt until secure but do not torque.



8. Locate the following:

- **Hardware Pack HP9300**
 - 2x 1/4"-20 X 5/8" Bolt
 - 4x 1/4" Flat Washer
 - 2x 1/4"-20 Jam Nut

On each side of vehicle, pass 1/4" bolt through overlapping slots of support bracket and flag mount brace. Insert bolts in outboard direction as shown in **Figure 9** to avoid threads of bolts protruding into cargo space. Install with washers and nuts. Tighten until secure but do not torque.



9. Locate the following:

- **Hardware Pack HP9312**
 - 8x 1/4"-20 X 5/8" Bolt
 - 8x 1/4"-20 Jam Nut
 - 16x 1/4" Flat Washer
- 2x **8808 Striker Mount**

Use supplied 1/4" hardware to fasten 8808 striker mounts to **outboard** face of 2864LEFT and 2864RIGHT support brackets as shown. Install hardware into four slots on each support bracket. Insert bolts in outboard direction to avoid the threads of the bolts protruding into the cargo space. Tighten hardware until secure but do not torque.



10. The spare tire lower support assembly is complete. Torque hardware to following:

- Torque OEM bolts fastening support brackets to roll cage to **40 ft-lbs.**
- Torque M6 bolts holding foot brackets to bed to **8 ft-lbs.**
- Torque square-neck carriage bolt to **25 ft-lbs.**
- Torque 1/4" bolt fastening the flag mount brace to support bracket to **25 ft-lbs.**
- Torque flag mount brace Torx bolts to **8 ft-lbs.**
- Torque flag mount brace 3/8" bolt to **20 ft-lbs.**
- **Do not** torque 1/4" striker mount hardware at this time.
- See **Figure 31** at the end of this document for torque values diagram.

11. It is time to assemble and install the swing frame. Locate the following:

- 1x **8751** – Swing Frame, Driver
- 1x **8752** – Swing Frame, Passenger
- **Hardware Pack HP9299**
 - 4x **Pivot Tube Poly Bushing**
 - 2x **5548** – Pivot Tube Crush Sleeve

Press poly bushings into pivot tubes at the end of the swing frames. The pivot tubes are open on both ends and do not have a welded end cap. Apply grease to **outside** of crush sleeves. Press crush sleeve into poly bushings as shown in **Figure 12**.

Figure 11: Insert poly bushings and crush sleeve into pivot tubes.

5548

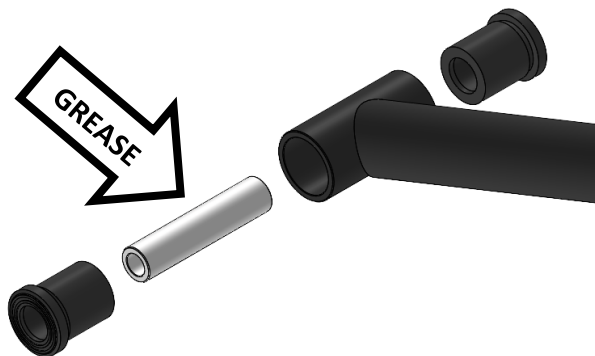
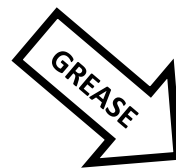
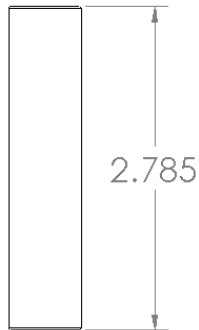


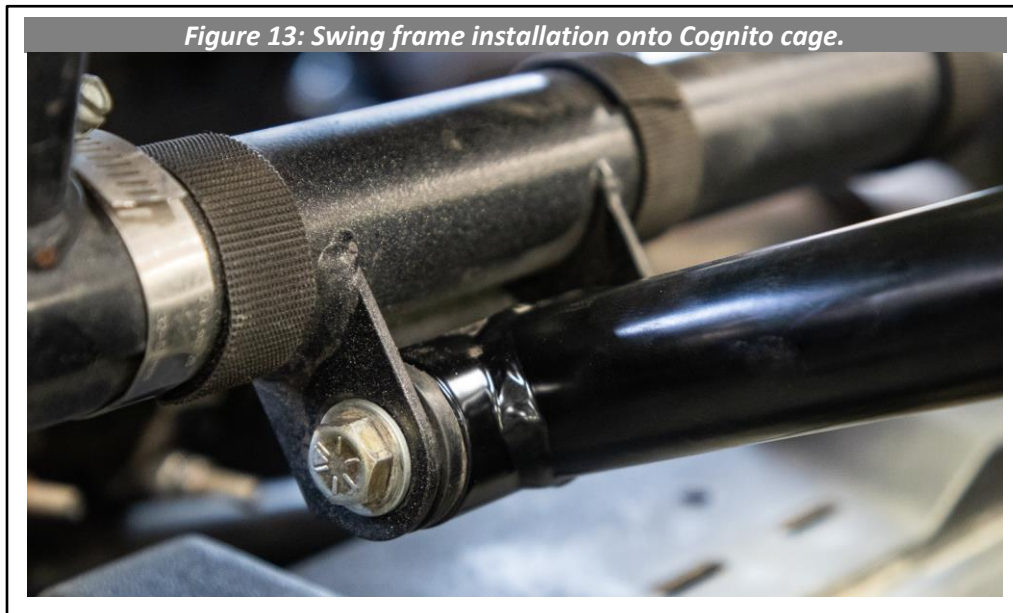
Figure 12: Insert poly bushings and crush sleeve into pivot tubes.



12. Locate the following:

- **Hardware Pack HP9299**
 - 2x 3/8"-16 X 3-3/4" Hex Bolt
 - 4x 3/8" Flat Washer
 - 2x 3/8"-16 Lock Nut

Insert the pivot tube of each swing arm between slotted clevis brackets on the Cognito cage, shown in **Figure 13**. Install using the supplied hardware but do not tighten. This is an adjustment point for the swing frame.



13. Locate the following:

- 2x **8753** – Cross Bar
- **Hardware Pack HP9299**
 - 4x **7/16"-14 X 2-1/2"** Hex Bolt
 - 8x **7/16"** Flat Washer
 - 4x **7/16"-14** Lock Nut

Connect two swing frames together using two cross bars and supplied hardware. Tighten hardware until secure but do not torque.

Figure 14: Fasten cross bars to swing frame tabs as shown.



14. Locate the following:

- 1x **5042** – Center Crush Sleeve
- 1x **6868** – Ratchet Y-Strap
- **Hardware Pack HP9299**
 - 1x **7/16"-14 X 3"** Hex Bolt
 - 2x **7/16"** Flat Washer
 - 1x **7/16"-14** Lock Nut

Insert crush sleeve 5042 into loop of free end of the ratchet strap as shown in **Figure 15**. Connect ends of the swing frames together using supplied hardware, passing bolt through crush sleeve as shown in **Figure 16**. Tighten all swing arm hardware until secure but do not torque.

Figure 15: Insert crush sleeve into ratchet strap loop.



Figure 16: Connect swing frames together with supplied hardware.



15. Locate the following:

- 1x **6869** – Righthand Latch
- 1x **6870** – Lefthand Latch
- **Hardware Pack HP9299**
 - 2x **2918** – Two-Hole Latch Washer Smaller Diameter
 - 4x **1/4"** Flat Washer
 - 4x **1/4"** Split Lock Washer
 - 4x **1/4"-20 X 1"** Socket Head Bolt



Locate latches and identify using **Figure 17**. Use supplied hardware to install each latch onto swing frame. Latch triggers point outwards from swing frame. Refer to **Figure 18** for hardware order and **Figure 19** for final assembly onto swing frame. **Following this order is crucial to preventing damage to components.** Torque latches to **10 ft-lbs**.

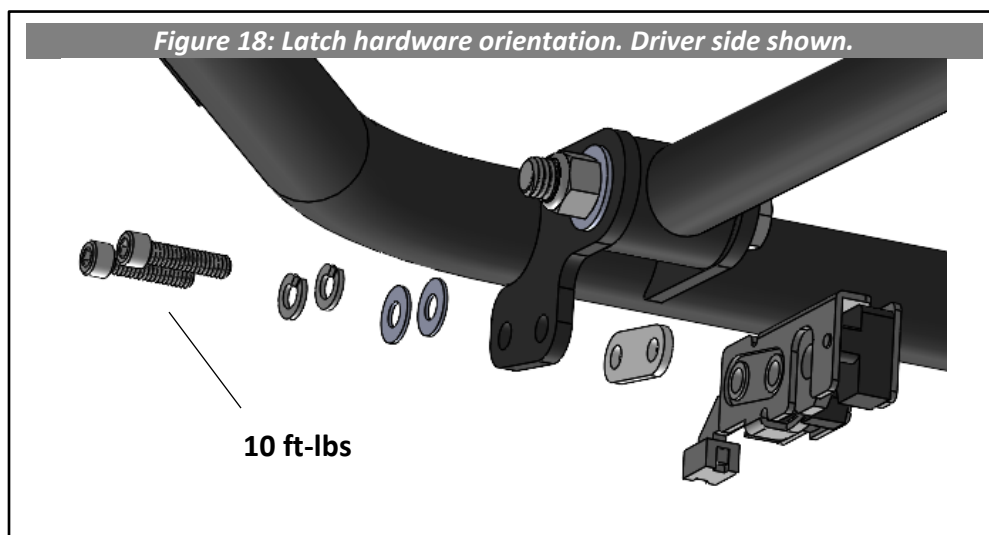


Figure 19: Latch installed onto driver side.

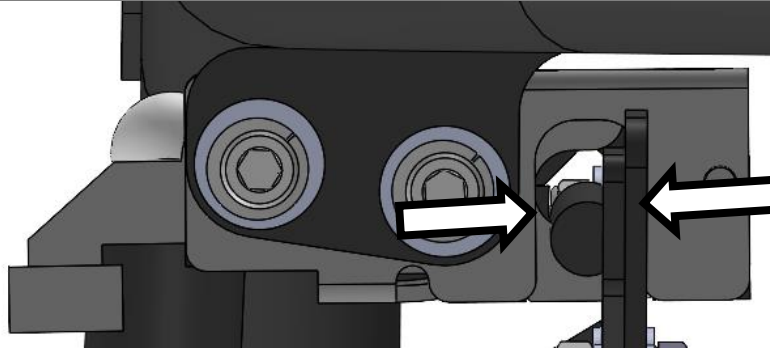


16. It is time to align the swing frame. Carefully lower the swing frame to engage the striker bars on the support bracket assemblies. Note that height of the striker mounts and the forward/rearward position of the swing frames are adjustable via slotted holes. Using these adjustment points, move the swing frame to the desired position. Follow the adjustment tips below:

- **If the swing frame is off-center:**
 - Slightly loosen pivot bolts at clevis brackets. Push one swing frame arm forward and pull other arm rearward to rotate the swing frame left or right, as shown in **Figure 20**.
 - Ensure proper latch engagement. Latch opening must be centered on the striker bar of the latch mount. See **Figure 21**.
 - Once the swing frame is in a desirable position, tighten the pivot bolts until secure but do not torque. There may be additional adjustments necessary.

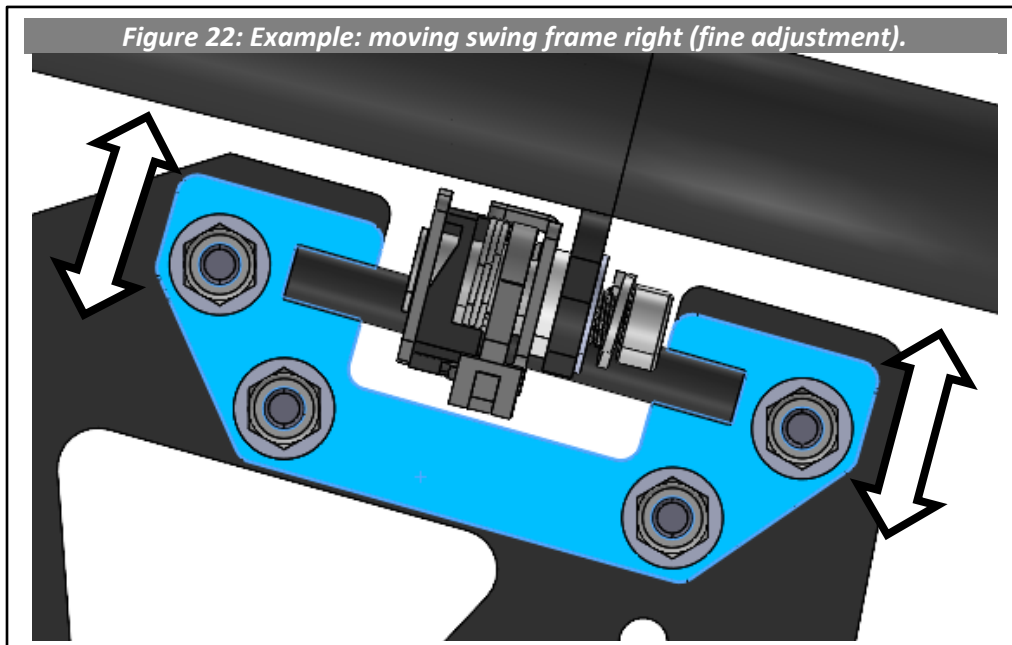


Figure 21: Center striker bar on latch opening during engagement.



- **If the swing frame is too high/low when the latches are engaged:**
 - Carefully lower swing frame and engage both latches. Slightly loosen 1/4" hardware fastening striker mounts to support brackets. Adjust striker mounts vertically via the four slots to adjust vertical height of the swing frame.
 - Ensure the swing frame sits high enough to clear support brackets when closed.
 - Adjust the height of the swing frame to clear any items stored in the bed. Items in the bed should not sit above the swing frame in its closed position or they may be damaged while carrying a tire.
 - The latches **must** both engage at the same time when lowering the swing frame.
 - Tighten hardware until secure but do not torque. There may be additional adjustments necessary.

Figure 22: Example: moving swing frame right (fine adjustment).



- **If the swing frame is too far forward/rearward when the latches are engaged:**
 - Loosen pivot bolts and move the entire swing frame forward or rearward until the latch is centered on the striker bar opening.
 - Tighten hardware until secure but do not torque.
 - Open and close the swing frame to ensure proper latch engagement and no component interference. Make any further adjustments if necessary.

Figure 23: Example: moving swing frame left (large adjustment).

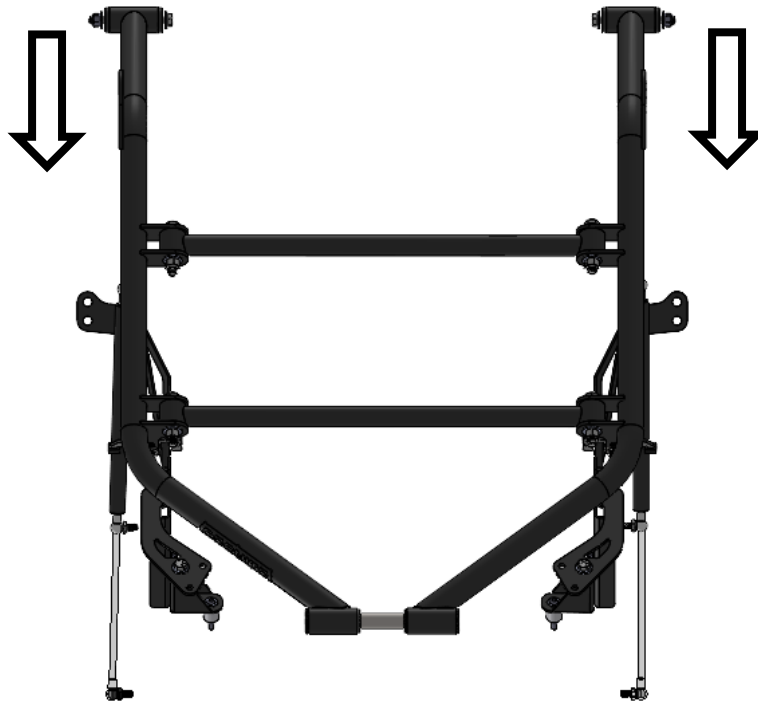
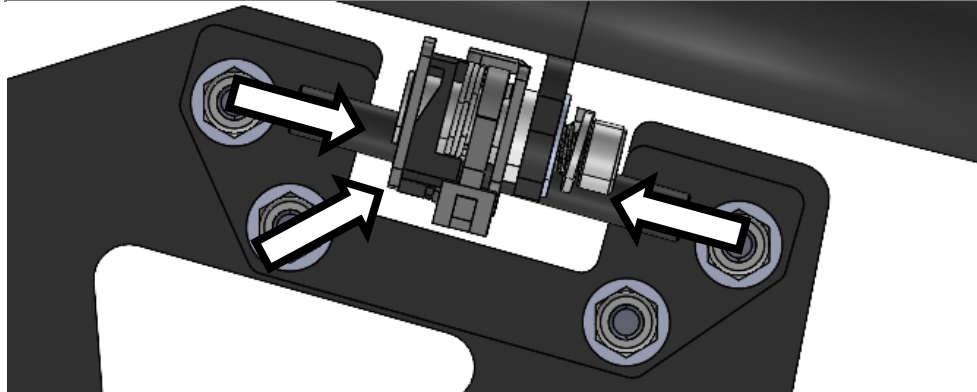


Figure 24: Center latch on striker bar opening.



17. Confirm again that the swing frame can open and close freely and the latches are properly engaging. If so, the swing frame adjustment is complete. Beginning torquing all swing arm hardware.

- Torque the two 3/8" pivot bolts to **30 ft-lbs.**
- Torque the 7/16" bolt connecting the swing arms and ratchet strap to **50 ft-lbs.**
- Torque the four 7/16" bolts connecting the cross bars to **50 ft-lbs.**
- Torque the four latch bolts to **10 ft-lbs.**
- Torque the 1/4" striker mount hardware to **25 ft-lbs.**
- See **Figure 30** for a torque values diagram.

18. Locate the following:

- 2x **6867** – 60lb Gas Lifting Strut
- **Hardware Pack 9299**
 - 4x **5/16"-18 Lock Nut**
 - 4x **5/16" Flat Washer**

Unlatch swing frame. Insert threaded rod ends of struts into tabs on the swing frame and the lower support brackets. Struts must be located on **outside** of tire carrier assembly, with the threaded rod ends oriented **inboard**. Use supplied hardware to fasten the struts. See **Figure 25** and **26** for assembly orientation.

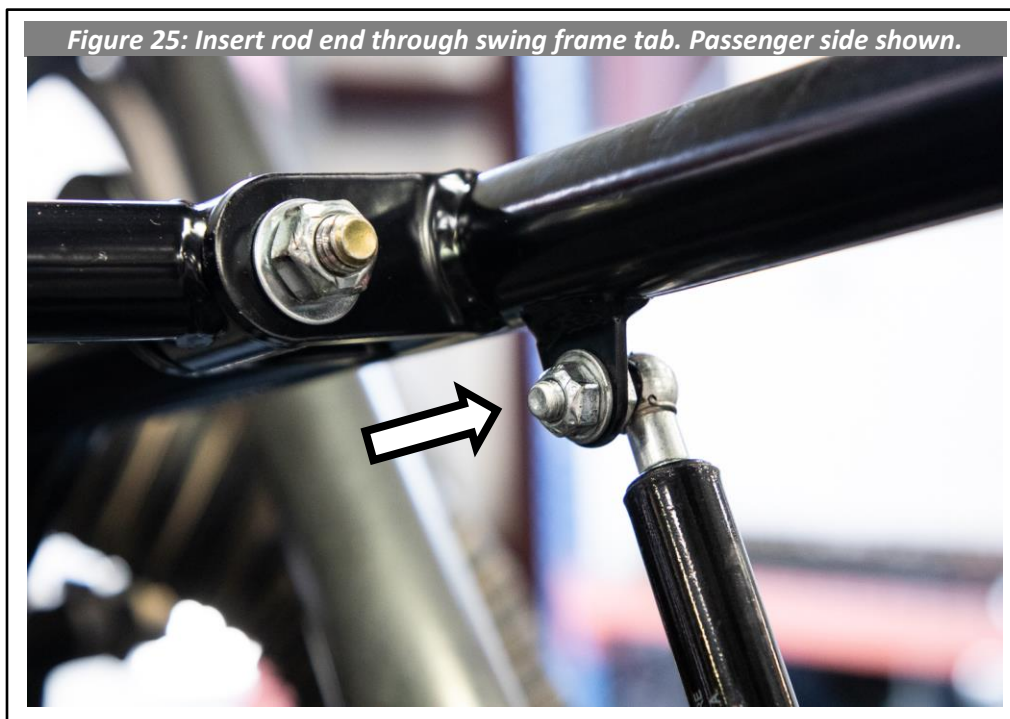


Figure 26: Insert rod end through lower support bracket. Passenger side shown.



Holding the rod ends with a **13mm** wrench, use a **1/2"** socket to torque the four lock nuts to **8 ft-lbs**. Lower and latch the swing frame. Place a tire or a weight of around 80 lbs on the spare tire carrier. Unlatch and raise the swing frame. The gas struts should be able to independently support the swing frame and weight.

19. Locate the following:

- **2x Plastic Cap Plug**

Press the plastic cap plugs into tubes at the end of the swing frame as shown in **Figure 27**.

Figure 27: Plastic cap plugs pressed into swing frame.



20. The install is complete.



TORQUE VALUES:

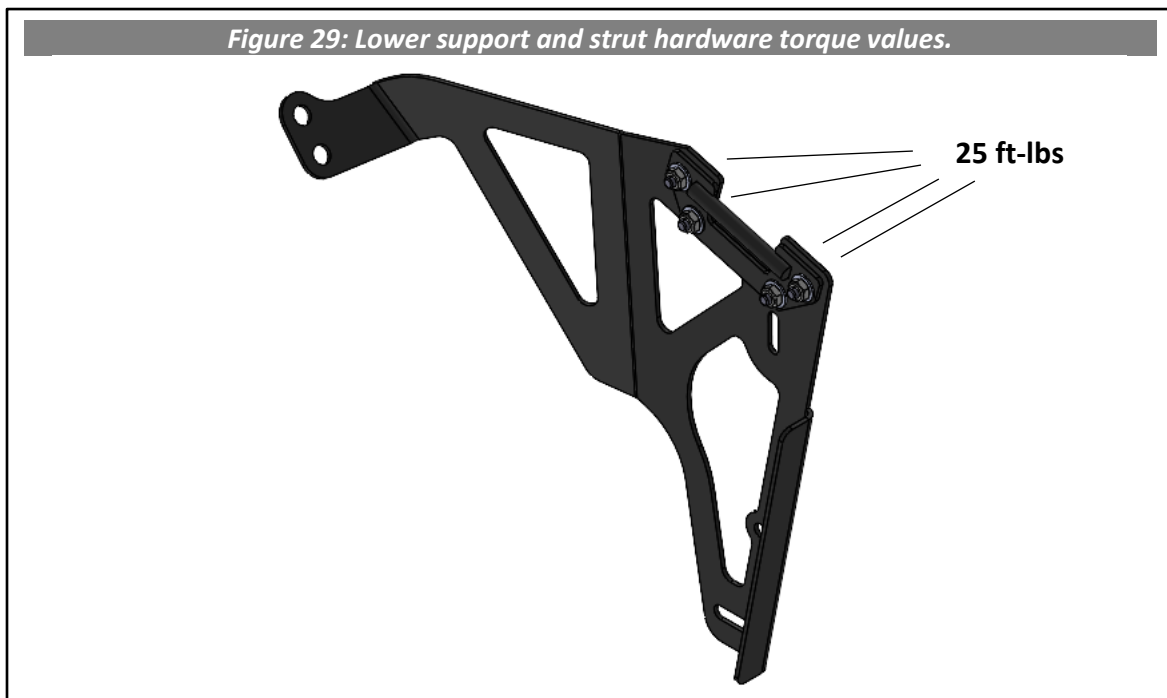


Figure 30: Swing frame hardware torque values.

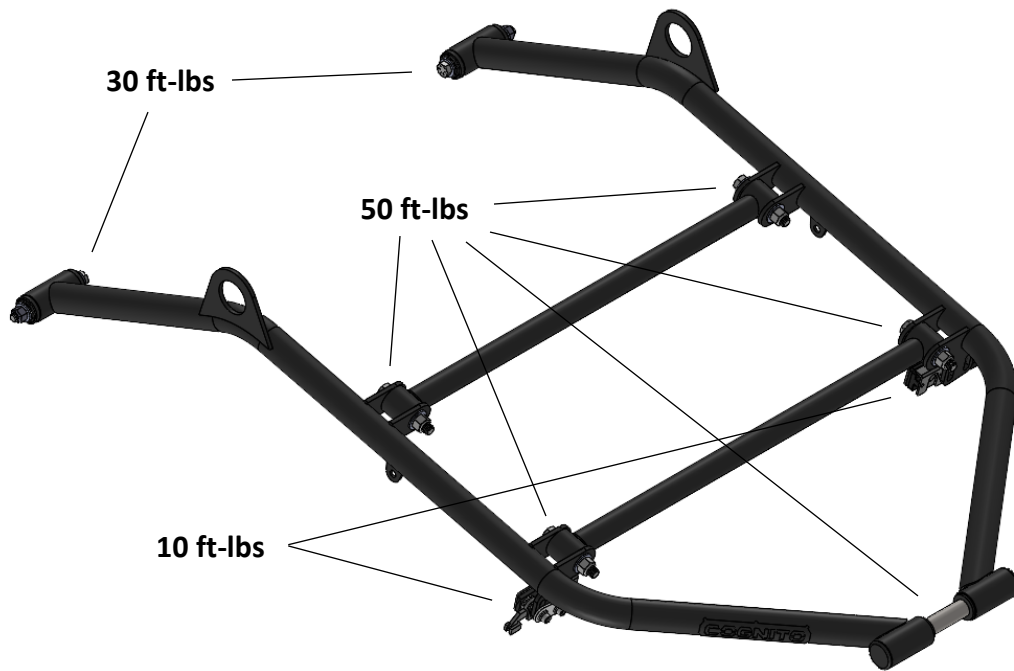
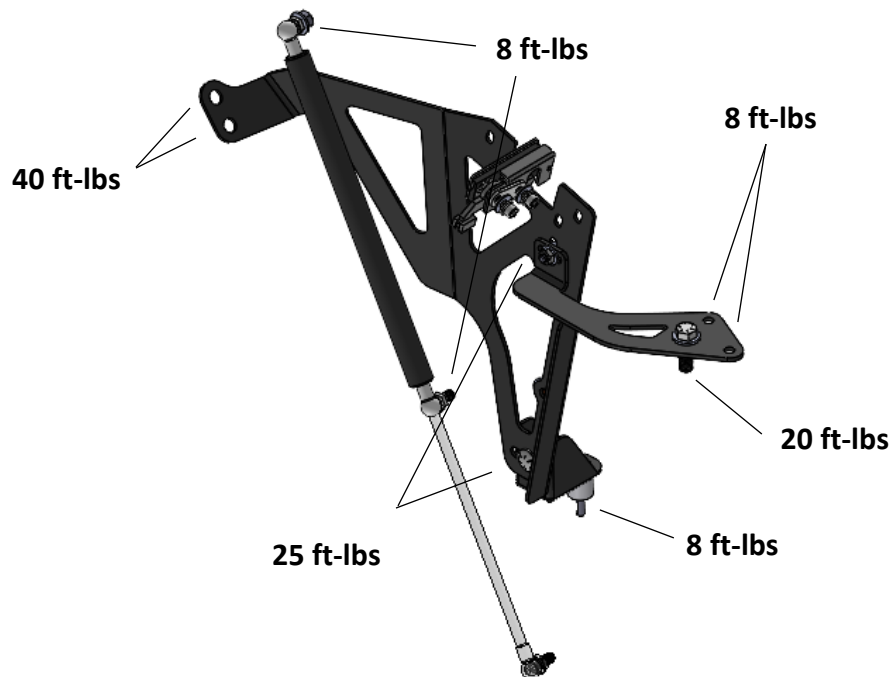


Figure 31: Lower support and strut hardware torque values.



WARRANTY / RETURN POLICY / SAFETY

Cognito Limited Lifetime Warranty

Cognito Motorsports, Inc. hereinafter "Cognito," warrants to the original retail purchaser, that its suspension products are free from workmanship and material defects for as long as the purchaser owns the vehicle on which the product(s) were originally installed. This warranty will be void if any modifications are made to the components, including alterations to the surface finish, i.e.; painting, powder coating, plating, and/or welding, or if they are improperly installed. Cognito truck suspension products are not designed nor intended to be installed on "competition" vehicles used in race applications, stunt or for exhibition purposes that are outside of the intended operating conditions specified by the manufacturer. Racing and competition are defined as any contests between two or more vehicles; or vehicles competing individually on off road circuits in timed events (whether or not such contests are for an award or prize).

This warranty does not include coverage for police, taxi, government or commercial vehicles, and the warranty does not cover Cognito products sold outside of the USA. Cognito's obligations under this warranty are specified and applied at its sole discretion, and warranty coverage is limited to repair or replacement of the defective product(s). Any and all costs of removal, installation or reinstallation; freight charges, incidental or consequential damages associated with the covered products are expressly excluded from this warranty.

The following items are exempt from Cognito limited warranty coverage: bushings, bump stops, tie-rod ends (Heim joints) and limiting straps. These parts are "consumables" and designed to wear as a normal part of their duty cycle, therefore they are not considered defective when worn. The aforementioned products are warrantied separately against defects in workmanship, for 60 days from the date of purchase. As a condition of warranty validation, respective Cognito suspension components must be installed as a complete system (not combined with non-Cognito hardware or ancillary parts). Any substitutions or omission of required components will void the warranty. Some minor cosmetic wear and imperfections may occur to parts during shipping, which is not covered under this warranty. This limited warranty does not apply to any components that have been subjected to collision damage, negligence, alteration, abuse, or misuse, and coverage does not extend to products manufactured by third-party companies. Cognito reserves the right to supersede, discontinue, or change the design, finish, part number and/or application of its parts when deemed necessary, without notice.

Return Policy

Product returns will not be accepted without prior written approval from an authorized Cognito representative. All products being returned must be shipped via trackable, prepaid freight. Returned products are subject to a 25% percent restocking fee. The eligible return period for products purchased directly from Cognito is 30 days from the verified date when the product(s) were originally received by the purchaser.

Product Safety Advisory

The installation of Cognito steering and suspension components will modify your vehicle's original factory equipment and geometry, which may cause it to handle differently than a stock (unaltered) vehicle. Installation of these components is not intended to strengthen nor reinforce the vehicle's frame, nor are they designed to increase rollover protection. It is necessary to periodically inspect all suspension and drive train components for proper attachment, torque specifications, operation, and for any potential unusual wear or damage. Installation of these parts will modify the height of the vehicle and may raise the center of gravity. Modifying vehicle height combined with off road operation may increase your vehicle's susceptibility to rollover conditions, which may cause serious injury or death. Many states regulate allowable vehicle height modifications, and it is your responsibility to know and comply with the legal requirements specified by the laws where you reside. Modifications to your vehicle's ride height may also affect the ride quality, driver input response, trackability and handling, and wear to your vehicle's suspension components and tires.