

## BEFORE YOU BEGIN

1. Please read the instructions carefully and verify that each item is in the list.
2. Please retain these installation instructions for further reference and parts ordering information.

## PRODUCT INFORMATION

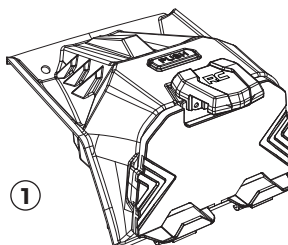
- |                                  |    |
|----------------------------------|----|
| ① Device Holder                  | x1 |
| ② Push Pin                       | x2 |
| ③ Thick Foam Pad W10*H10*L1000mm | x1 |
| ④ Thin Foam Pad W20*H2*L800mm    | x1 |

## IMPORTANT

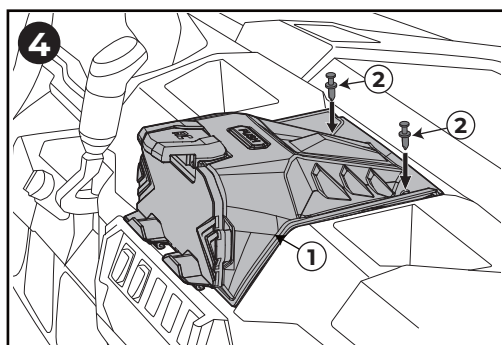
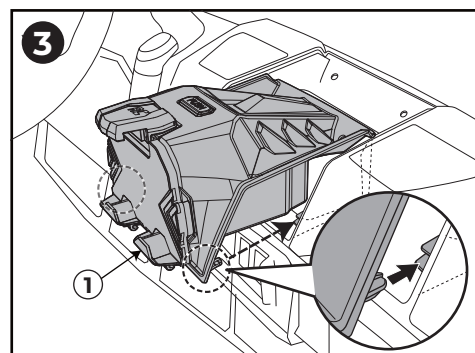
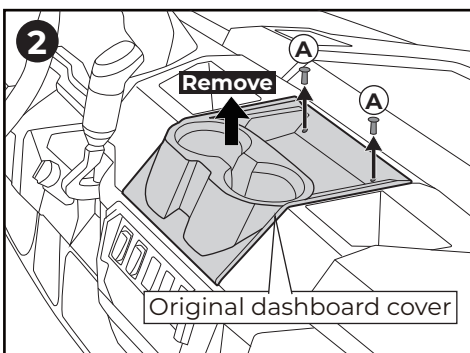
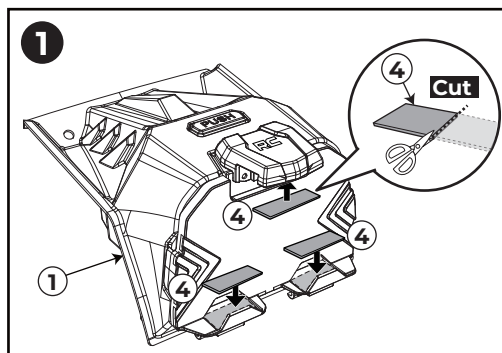
1. Please read the installation instructions carefully before you start.
2. If the vehicle is clean and free of other debris, it will be easy to install.
3. For your safety and to ensure a satisfactory installation, please complete all the installation steps in the order shown below.

Estimated installation time:

**15 minutes**



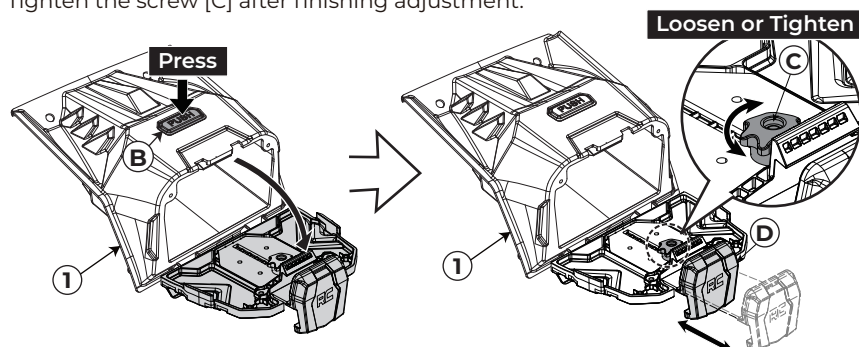
## INSTALLATION TIPS



- ① Cut the suitable length. Stick the thin foam pads [4] to device holder [1] as shown.  
( NOTE: The thick foam pad [3] is a spare part for small size devices. )
- ② Remove original factory dashboard cover by removing two push pins [A].
- ③ Parallely slide the device holder [1] into two slots on center dash inner wall.
- ④ Install the device holder [1] to vehicle with two push pins [2].

## FUNCTION DESCRIPTION

1. Press button [B] and open the device holder [1].
2. Loosen the thumb screw [C], then you can adjust the height of the claw [D] to fit different size of devices.  
Tighten the screw [C] after finishing adjustment.



**NOTE:** After closing the device holder [1].

