




CFMoto UForce 1000 HDPE Hinged Door

Hardware Kit for Striker Plate

Hardware	Description	Quantity
	"MIRROR MOUNT BOLTS" FOR STRIKER PLATE (use these if you do not have mirrors)	5

WARNING!!!! USE HAND TOOLS ONLY! WHEN INSTALLING THE HINGES AND STRIKER PLATE! USING A DRILL MAY CAUSE THE STAINLESS STEEL BOLTS TO STRIP!!!

Hardware Kit for Hinges

Hardware	Description	Quantity
	12MM BUTTON HEAD BOLT FOR HINGES	12

LEFT AND RIGHT STRIKER PLATES





4 HINGES (INSTALLED ON VEHICLE)



2 TOP DRIVERS AND PASSENGER SIDE
DOOR HINGES (INSTALLED ON DOOR)

HARDWARE FOR THESE HINGES ARE
ALREADY INSTALLED ON THE DOOR



2 BOTTOM DRIVERS AND
PASSENGER SIDE DOOR
HINGES (INSTALLED ON
DOOR)

HARDWARE FOR THESE
HINGES ARE ALREADY
INSTALLED ON THE DOOR

Hardware Kit for Latch

Hardware	Description	Quantity
	3/4" BUTTON HEAD BOLTS	6
	2 1/4" BOLT	2
	WASHERS	4
	LOCK NUTS	12

One passenger side and one drivers side latch.



2 Locking mechanisms



Hardware Kit for Stabilizing Bars

Hardware	Description	Quantity
	1 1/4" BUTTON HEAD BOLTS	2
	1 1/2" BUTTON HEAD BOLTS	4
	LOCK NUTS	6
	WASHERS	6

Extra Hardware and Spacers

Hardware	Description	Quantity
	1/2" SPACER	2
	1/4" SPACER	2
	1 1/4" BUTTON HEAD BOLT	1
	LOCK NUT	1
	WASHER	1

Rubber Door Stop

Hardware	Description	Quantity
	RUBBER DOOR STOP	2
	STOPPER PIN	2
	1 1/4" BUTTON HEAD BOLT	2
	LOCK NUT	2
	WASHER	2

Remove factory arm bar before installation!!!

**DO NOT TOW UTV
WITH DOORS ON!!!
Doors were not made
to bear weight! Do
not lean on them.
Please always wear
your seat belt!!**



STEP 1:

Remove factory mirrors and mirror brackets. Set aside mirror and factory bolts we will use those later. If you do not have the CFMoto brand mirrors, you will use the mirror mount bolts sent with the hardware kit.




Remove the bolts and spacers. Set them aside we will use them to re-install the mirror. If you do not have a mirror use the mirror bolts provided.



STEP 2:

The striker plate has been assembled for you, hold the plate to the front of the cab frame. Reinstall mirror spacers, mirrors and bolts.



A close-up photograph of a vehicle's mirror mounting assembly. The image shows a black metal frame with a mirror attached. A text box is overlaid on the image, containing instructions for reinstalling mirror bolts. Two yellow arrows point to the bolts on the mirror's mounting bracket. The background is a plain white surface.

Reinstall mirror bolts with spacers. If you do not have mirrors use the bolts provided to install the striker plate. Tighten the bolts.

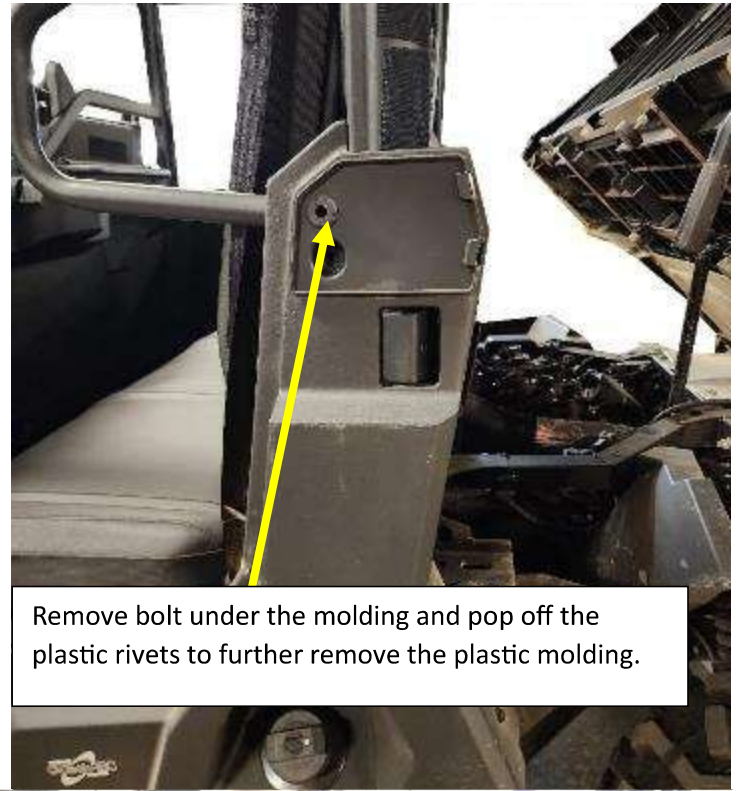
Leave the bolts on the striker plate itself loose.

STEP 3:

Remove plastic molding from the lower rear roll bar.



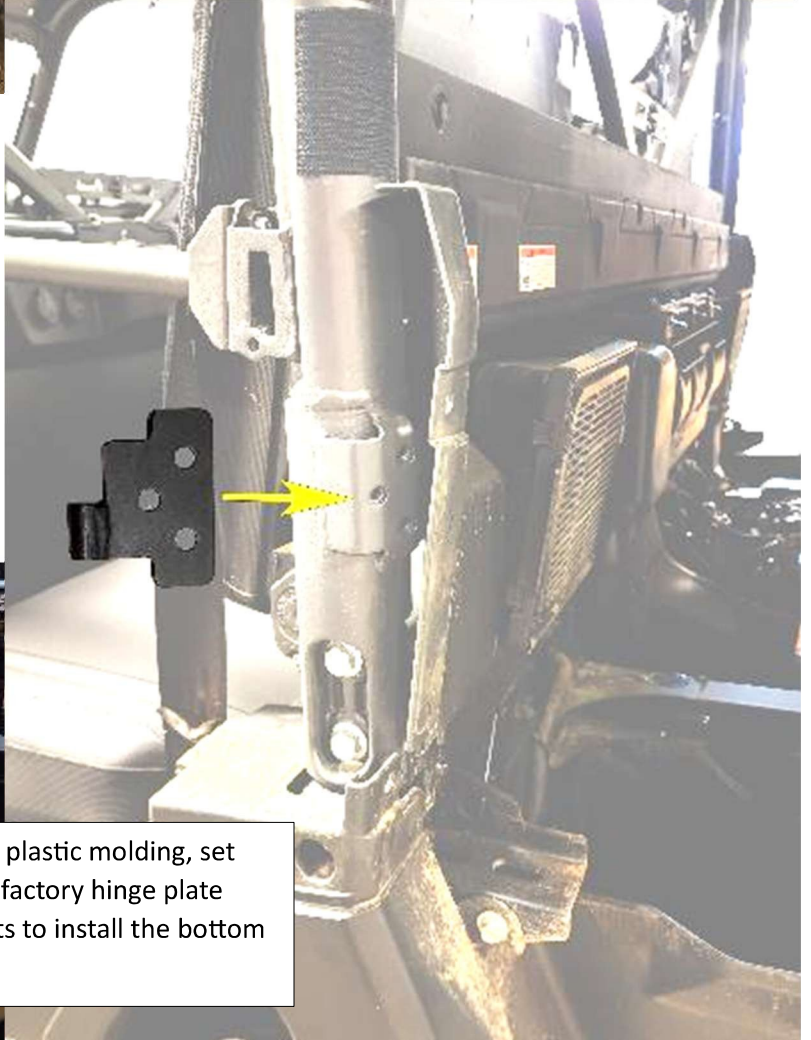
Remove plastic molding.



Remove bolt under the molding and pop off the plastic rivets to further remove the plastic molding.



After removing the plastic molding, set bottom hinge over factory hinge plate and use 12mm bolts to install the bottom hinge.



STEP 4:

Install top hinges on vehicle.



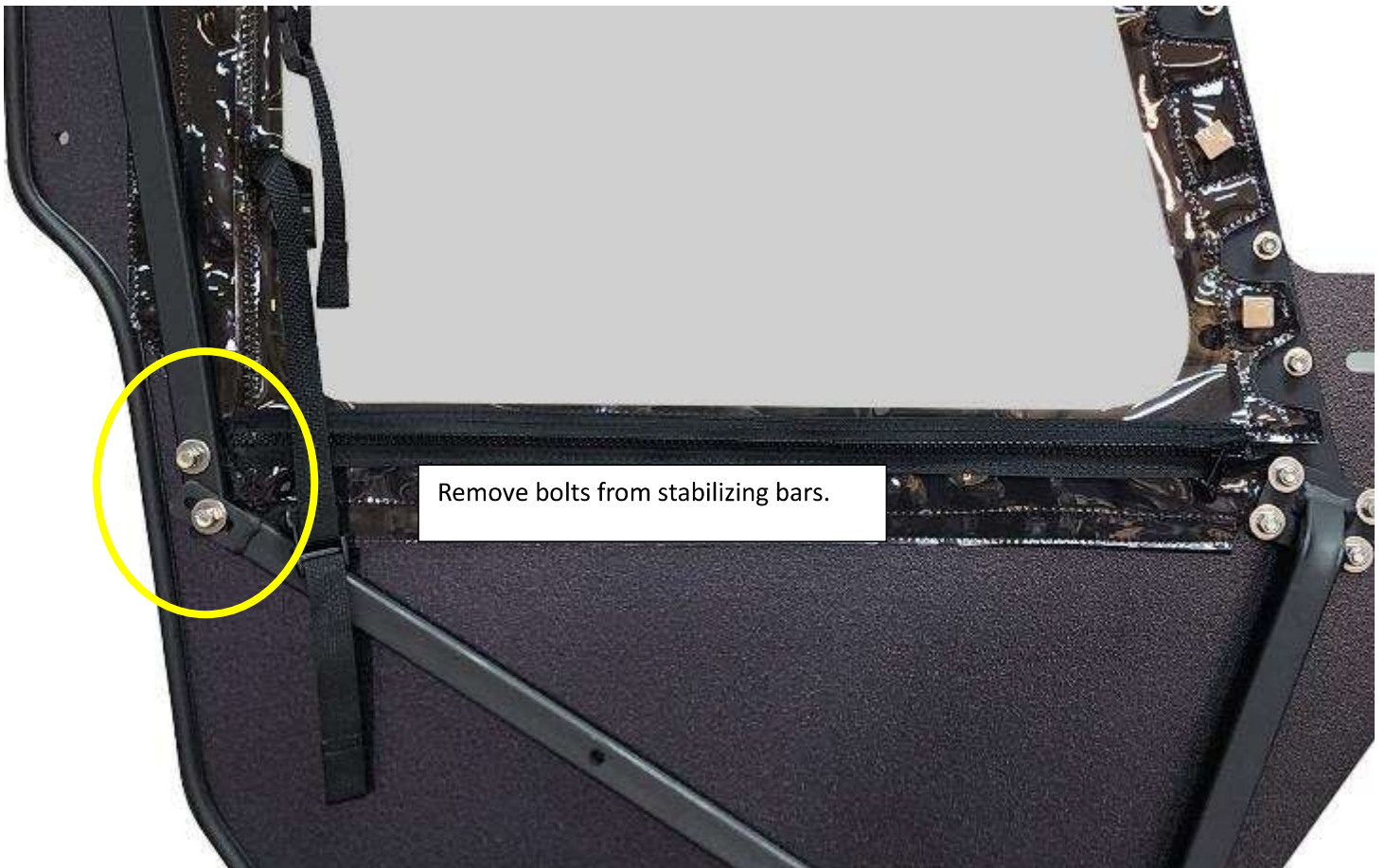
Use 12mm bolts to install top hinge to the factory hinge plate.



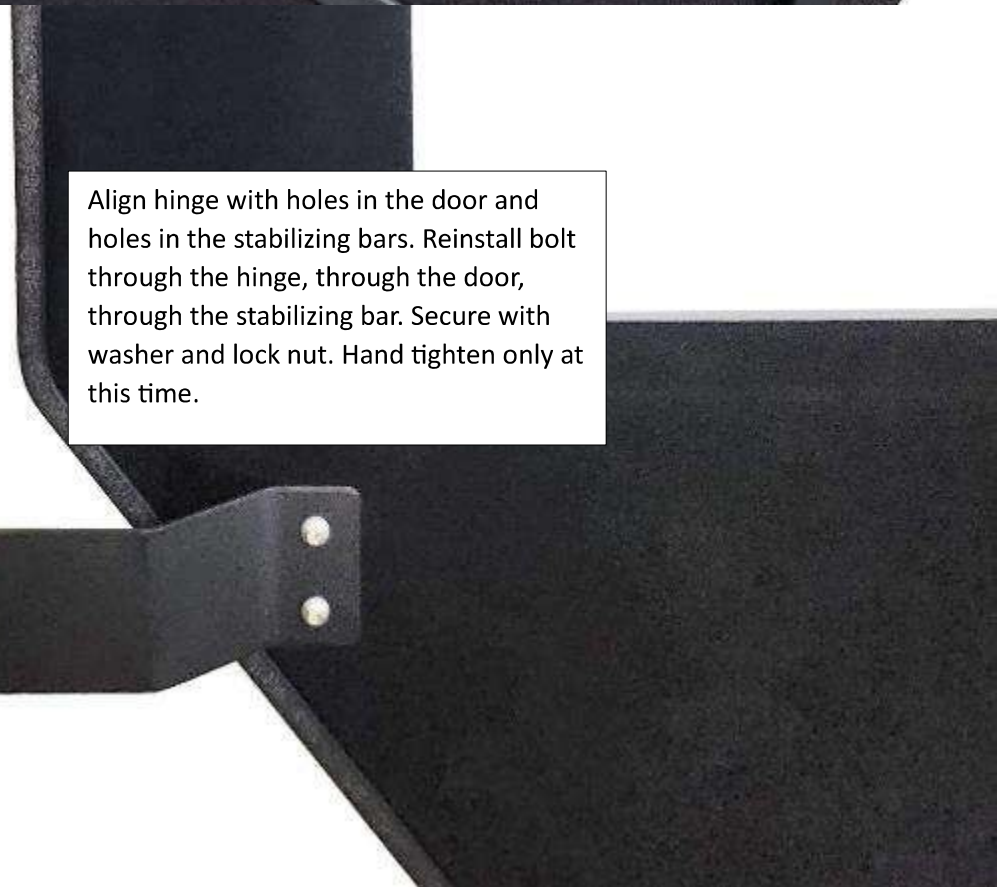
STEP 5: Install hinges on the top corner of door.



STEP 6: Install hinges on the lower corner of the door.

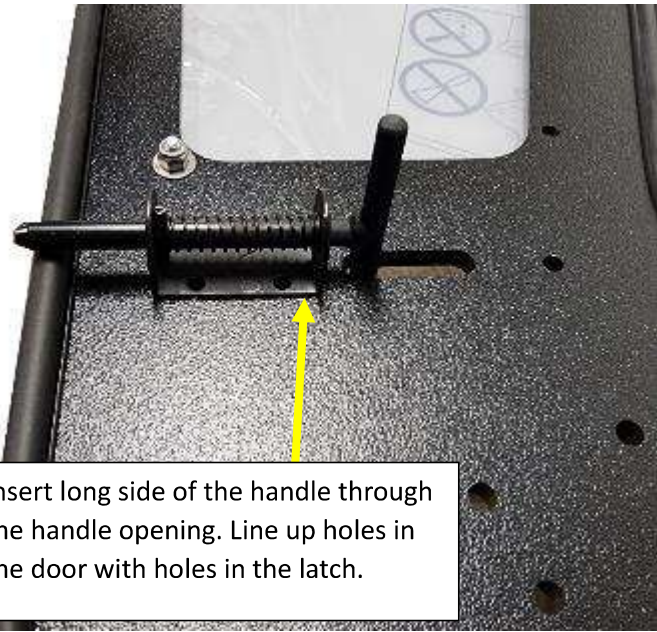


Remove bolts from stabilizing bars.



Align hinge with holes in the door and holes in the stabilizing bars. Reinstall bolt through the hinge, through the door, through the stabilizing bar. Secure with washer and lock nut. Hand tighten only at this time.

STEP 7: Install door latch. With door lock.



Insert long side of the handle through the handle opening. Line up holes in the door with holes in the latch.



Insert $\frac{3}{4}$ " bolt through the outside of the door then through the holes in the latch. LEAVE THE TOP HOLE CLOSEST TO THE TRIM EMPTY



Start lock nuts on each bolt, leave loose.

Install 2 1/4" bolt in the top hole closest to the trim on the door. Secure with lock nut. Tighten all lock nuts. You will need to use an allen wrench and 7/16 wrench to tighten the lock nut all the way down.



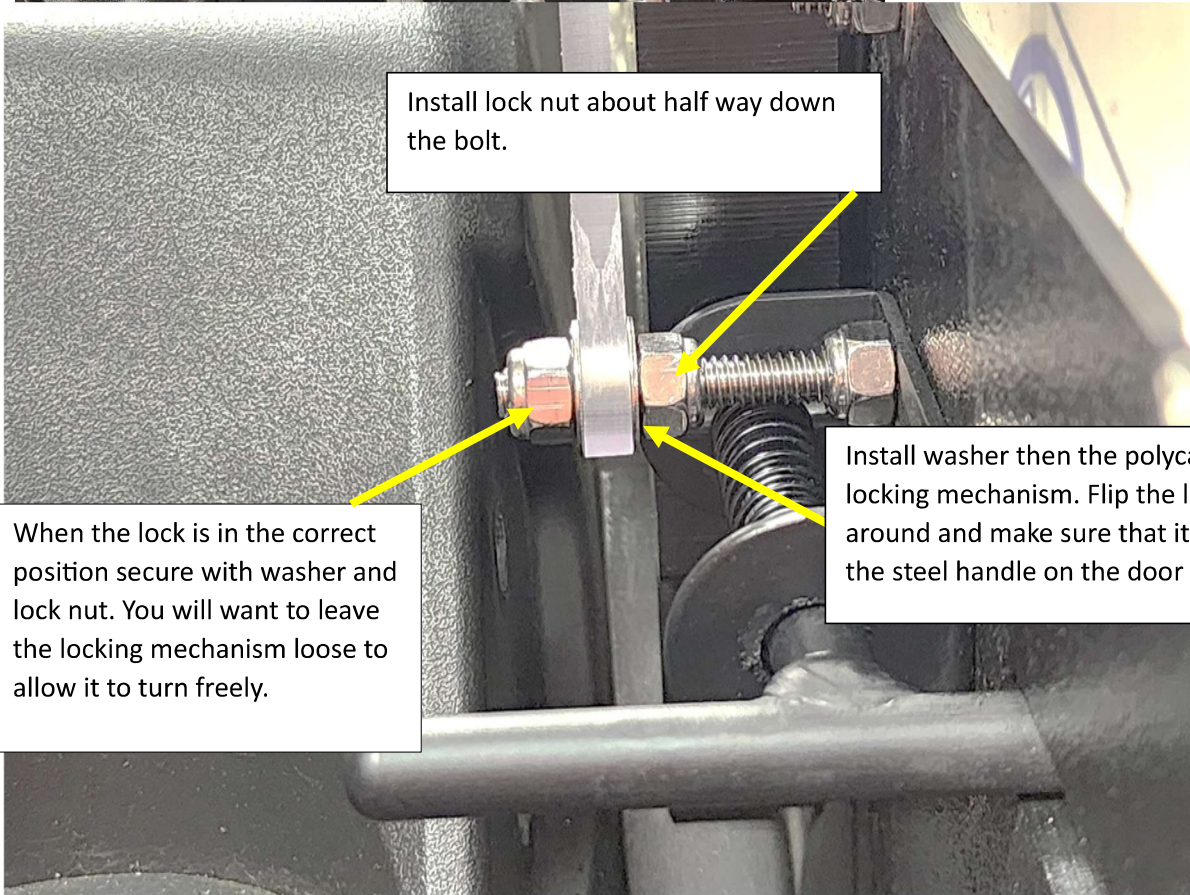
Pictured to the left is a photo of the door locking mechanism. The next series of photos will explain how to install this piece.



Install lock nut about half way down the bolt.

When the lock is in the correct position secure with washer and lock nut. You will want to leave the locking mechanism loose to allow it to turn freely.

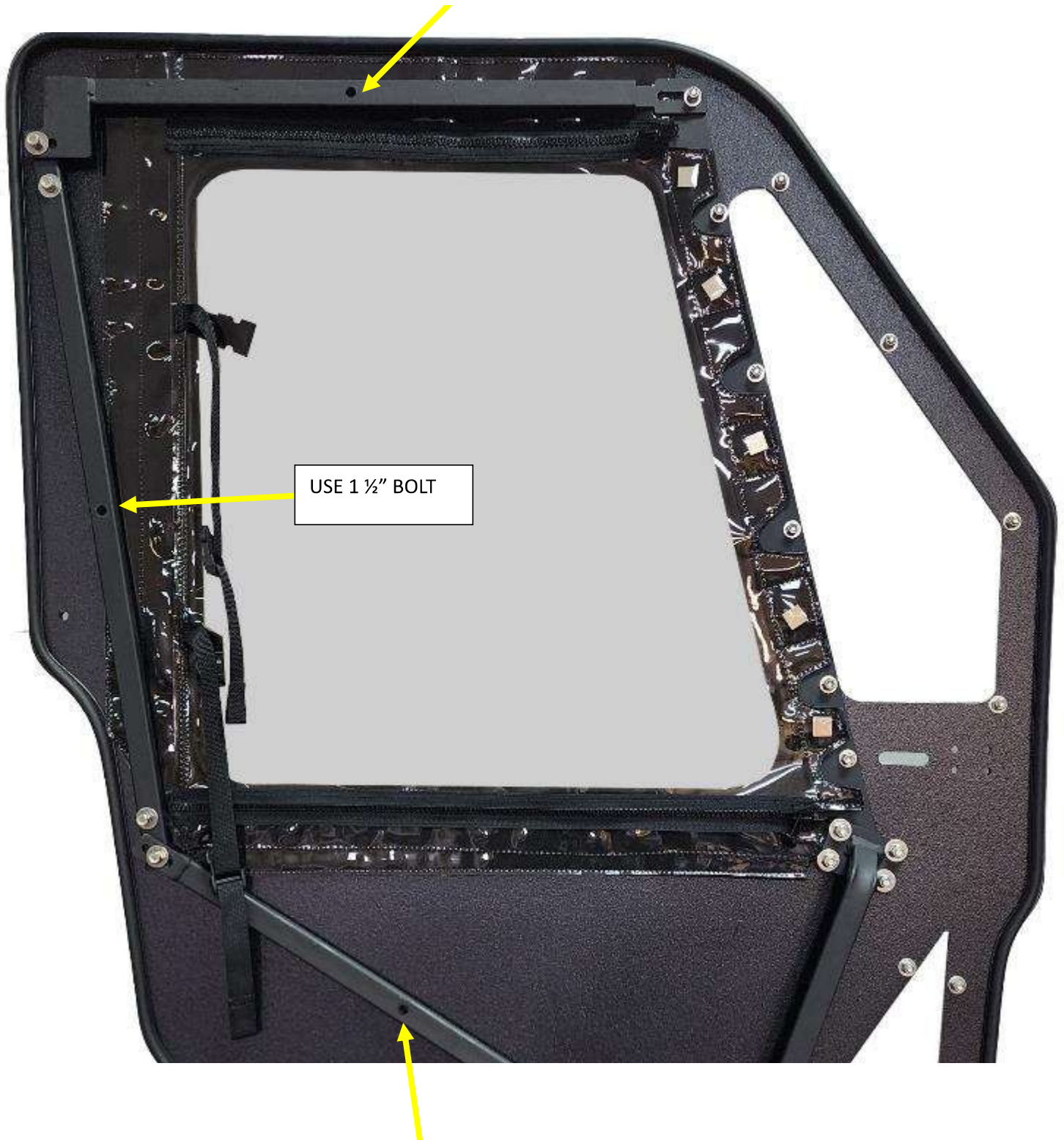
Install washer then the polycarb locking mechanism. Flip the lock around and make sure that it catches the steel handle on the door latch.



STEP 8: Set door on hinges, line up hinge pin with hinge pin mount and drop door into position. Shut the door and latch, the hinges on the door should have been left loose, move the door back and forth to find the best position for the hinges. Once you have the door in the correct position, the latch pin fits in the latch pin mount and the door is tight and secure, tighten the lock nuts on the hinge. If you are still having trouble with your door latch please give us a call at 859-488-7447. I have provided extra photos that may help you with the installation.

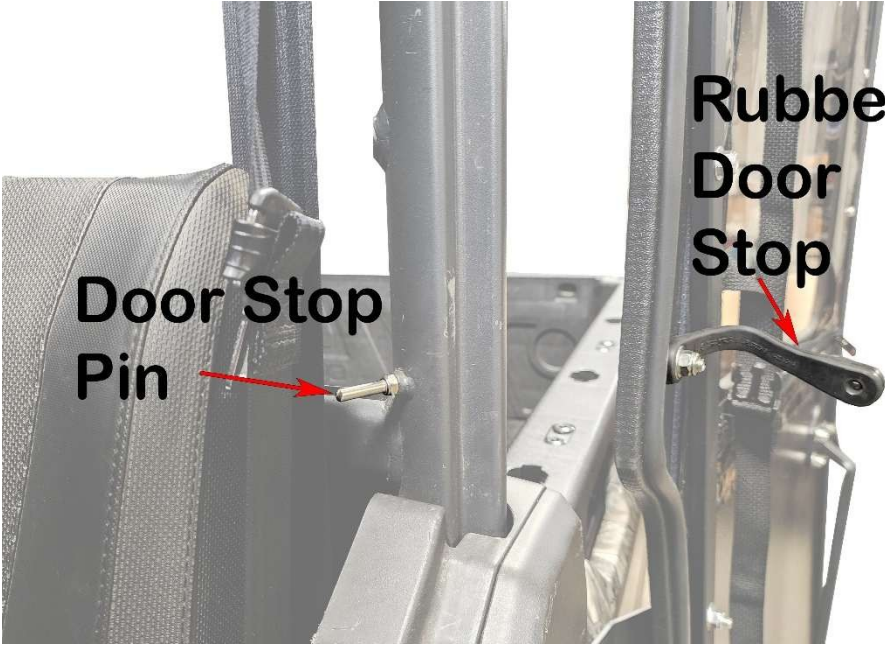
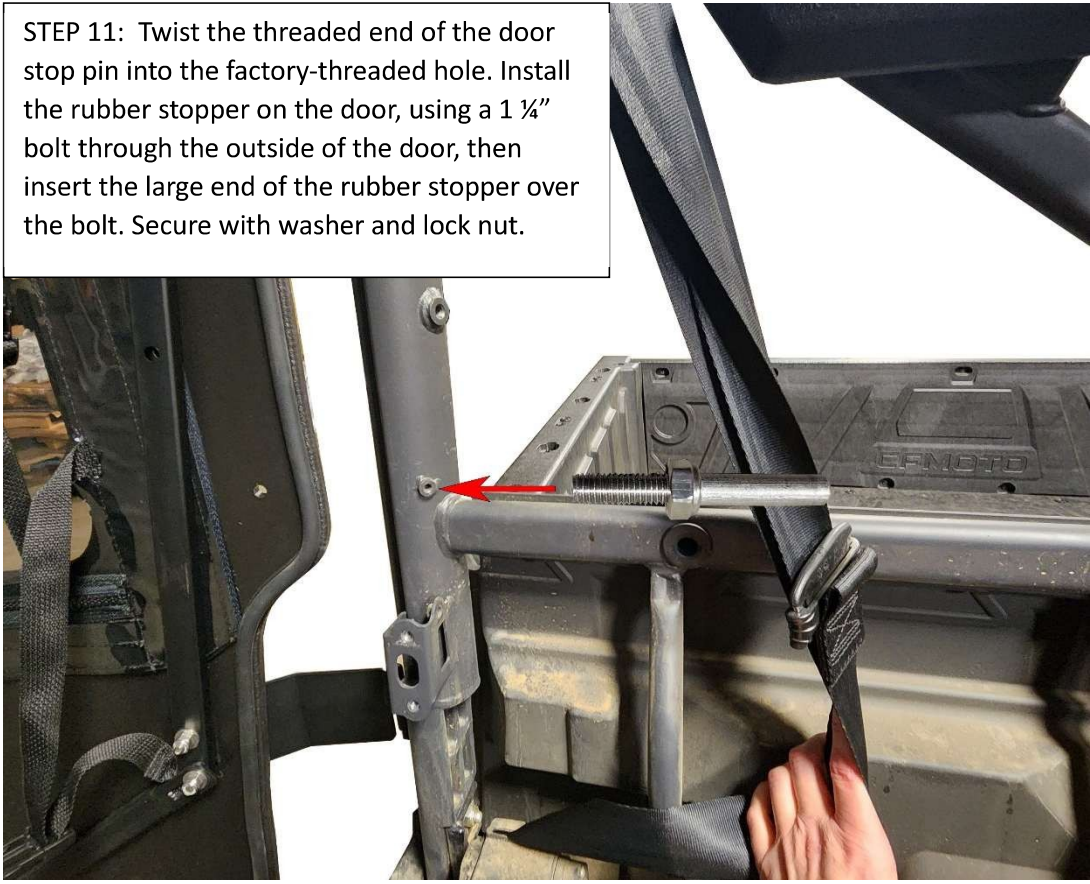


STEP 9: Install bolt through hole in the stabilizing bar and through the hard door. You will need to drill your own hole through the the door and vinyl window. Use 5/16 drill bit, drill through the hole in the bar, through the window, then through the hard door. Use 1 ½" bolt provided to secure stabilizing bar to the door. Push bolt through the outside of the door, through the window and stabilizing bar, secure with washer and lock nut.



STEP 10: Install bolt through hole in the stabilizing bar and through the hard door. You will need to drill your own hole through the door. Use 5/16 drill bit, drill through the hole in the bar, then through the hard door. Use 1 1/4" bolt provided to secure stabilizing bar to the door. Push bolt through the outside of the door and stabilizing bar, secure with washer and lock nut.

STEP 11: Twist the threaded end of the door stop pin into the factory-threaded hole. Install the rubber stopper on the door, using a 1 ¼" bolt through the outside of the door, then insert the large end of the rubber stopper over the bolt. Secure with washer and lock nut.

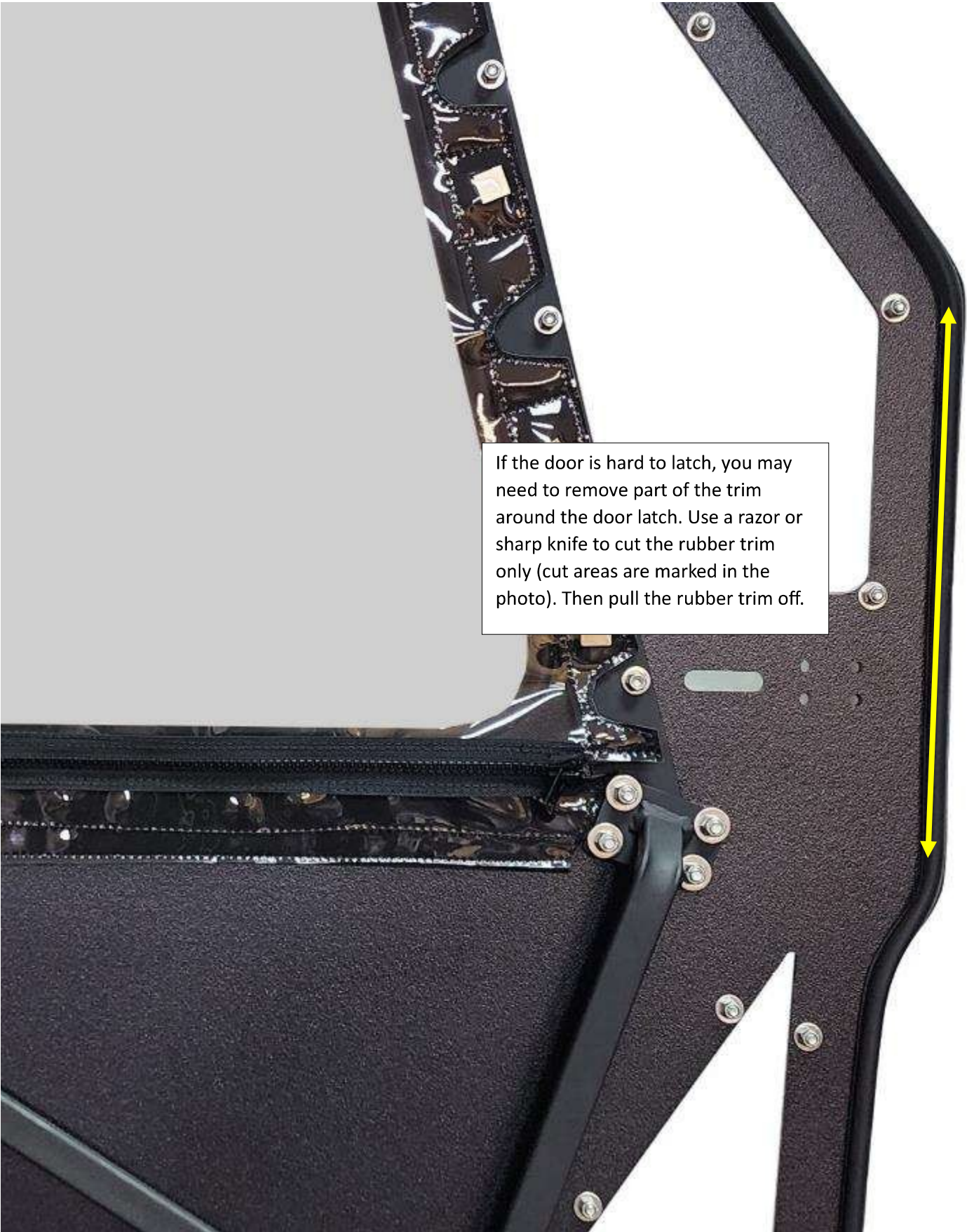




Adjust mirror outward to gain the most visibility.



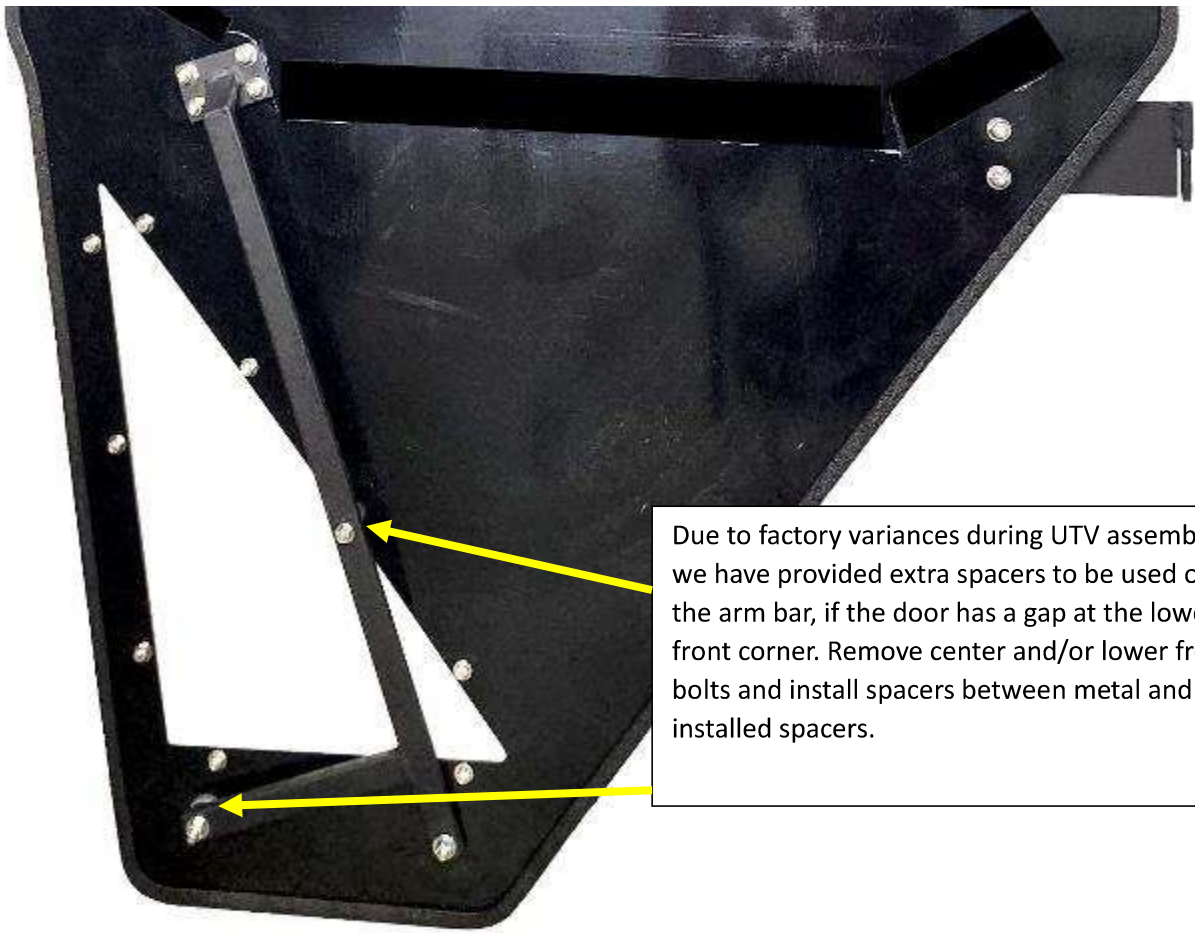
If you have a gap between your door and the front roll bar, hold the door at the top and center of the bar. Then pull the top of the door inward while pushing the center outward. This will help fill the gap.



If the door is hard to latch, you may need to remove part of the trim around the door latch. Use a razor or sharp knife to cut the rubber trim only (cut areas are marked in the photo). Then pull the rubber trim off.



We have supplied small round hook and loop stickers to attach to the door and window clip. These stickers will hold the window clip in place and prevent "flapping".



Due to factory variances during UTV assembly, we have provided extra spacers to be used on the arm bar, if the door has a gap at the lower front corner. Remove center and/or lower front bolts and install spacers between metal and pre-installed spacers.

