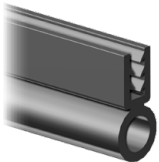
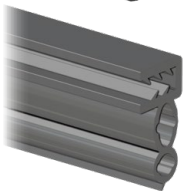


- Do not discard packaging until product has been successfully installed.
- Driver side installation shown in illustrations.

Item	Description
A	Left Door
B	Right Door



Seal



Bulb Seal



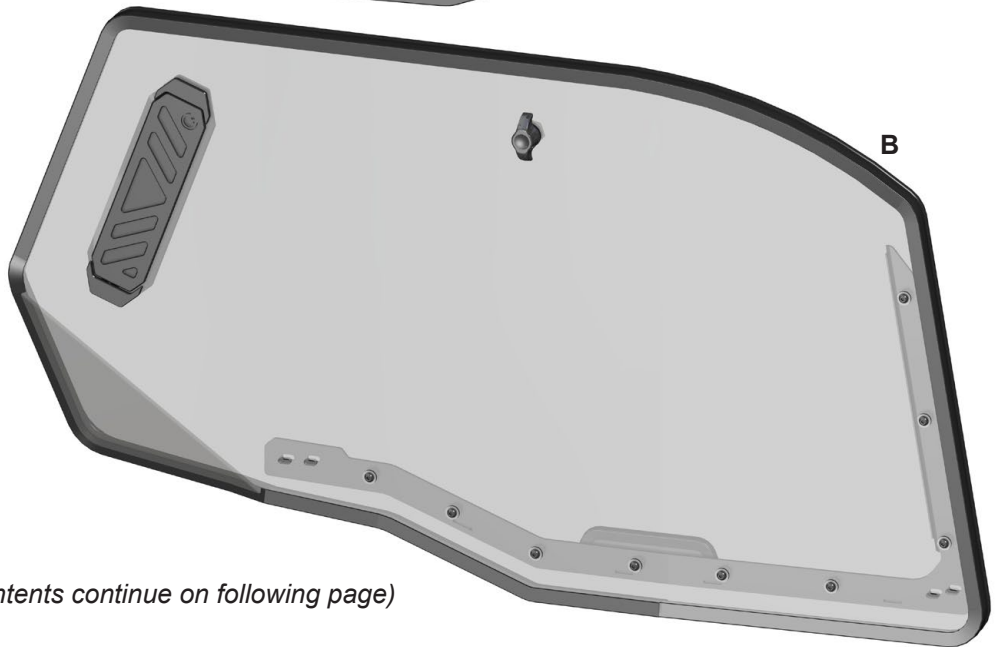
8x - Band Clamp



2x - Aluminum Clamp



A



B

(kit contents continue on following page)

#### Door Cleaning:

- Do not use Rain-X<sup>®</sup>, Plexus<sup>®</sup> or any other protector, wax, or polish.
  - Do not use window cleaning fluids (Windex, 409, etc) or any solvents (gasoline, denatured alcohol, acetone, etc).
  - Never use abrasive cleaners, abrasive pads, or gritty cloths.
  - Never use razor blades, scrapers, squeegees, brushes, etc.
1. Thoroughly rinse Doors to float off dirt and mud.
  2. Using a soft cloth, or microfiber cloth, clean Doors with warm water and a gentle detergent. Baby shampoo, rubbing alcohol, or hand washing soap can also be used.
  3. To prevent water spots, use a chamois to blot Doors dry.

#### Need help with your installation?



sales@superatv.com



www.superatv.com



1-855-743-3427



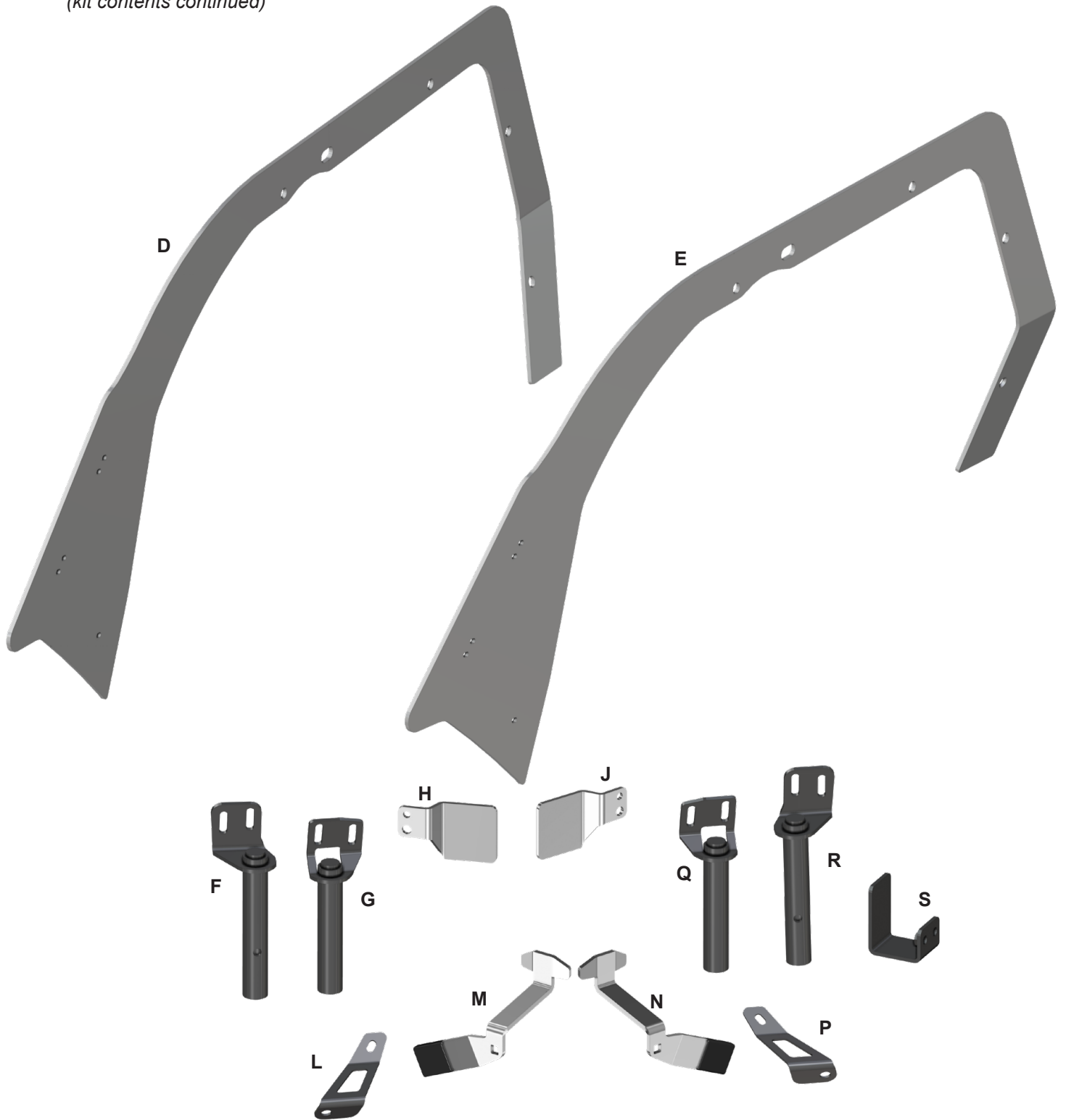
8:00am - 8:00pm EST M-Th  
8:00am - 7:00pm EST Friday  
9:00am - 2:00pm EST Saturday

Read instructions and view illustrations before beginning.

Thank You  
For Choosing



(kit contents continued)



Item	Description
D	Right Shroud
E	Left Shroud
F	Front Mount x 2
G	Rear Mount x 2
H	Left Catch
J	Right Catch
L	Left Filler Plate Bracket

Item	Description
M	Left Latch
N	Right Latch
P	Right Filler Plate Bracket
Q	Rear Mount - R
R	Front Mount - R
S	Shroud Clamp x 2

**Liability Statement**

SuperATV's® products are designed to best fit user's ATV/UTV under stock conditions. Adding, modifying, or fabricating any factory or aftermarket parts will void any warranty provided by SuperATV® and is not recommended. SuperATV's® products could interfere with other aftermarket accessories. If user has aftermarket products on machine, contact SuperATV® to verify that they will work together.

Although SuperATV® has thousands of satisfied customers, user should be aware that installing lift kits, long travel, or suspension kits, tires, etc. will change the ride of machine and may increase maintenance and part wear. Operating any off-road machine while, or after, consuming alcohol and/or drugs increases risk of bodily harm or death. No warranty or representation is made as to this product's ability to protect user from severe injury or death. SuperATV® urges operators and occupants to wear a helmet and appropriate riding gear at all times.

By purchasing and installing SuperATV® products, user agrees that should damages occur, SuperATV® will not be held responsible for loss of time, use, labor fees, replacement parts, or freight charges. SuperATV®, nor any 3rd party, will not be held responsible for any direct, indirect, incidental, special, or consequential damages that result from any product purchased from SuperATV®. The total liability of seller to user for all damages, losses, and causes of action, if any, shall not exceed the total purchase price paid for the product that gave rise to the claim.

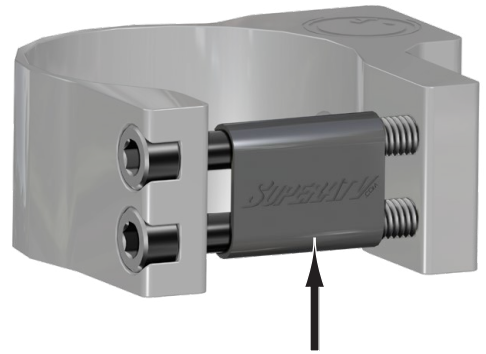
SuperATV® will warranty only parts provided by SuperATV®. Any damage or problems with OEM housings, bearings, seals, or other manufacturers' products will not be covered by SuperATV®. SuperATV® parts and products are not warrantied if item was not installed properly, misused, or modified.

Installing, adding, modifying, or fabricating any factory or aftermarket product to your ATV/UTV may violate certain local, state, and federal laws. Be advised that laws vary depending on town, city, county, state, etc. Use of certain products on public streets, roads, or highways may be in violation law. The Buyer is solely and exclusively legally and personally responsible for any violation of the law by the installation or use of the product. You must abide by all local, state, and federal laws, including but not limited to vehicle safety, traffic laws, and ordinances. It is your responsibility to know the laws and how they apply to you.

The Buyer is responsible to fully understand the capability and limitations of his/her vehicle according to manufacturer specifications, warnings and instructions and agrees to hold SuperATV® harmless from any damage resulting from failure to adhere to such specifications, warnings and/ or instructions. The Buyer is also responsible to obey all applicable federal, state, and local laws and ordinances when operating his/her vehicle while using this product, and the Buyer agrees to hold SuperATV® harmless from any violation thereof.



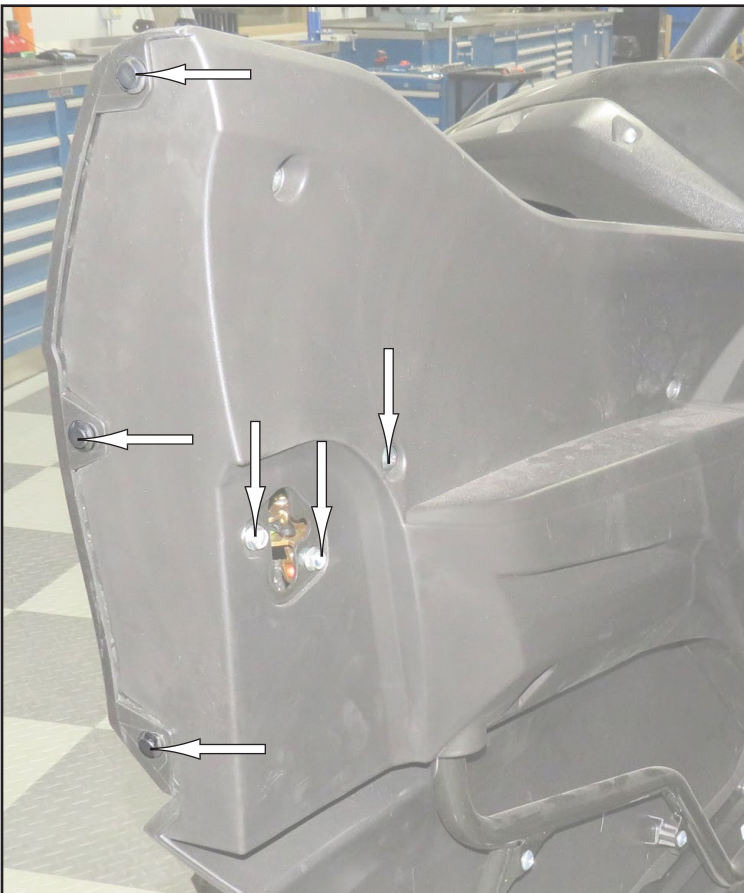
**disassemble Band Clamp**



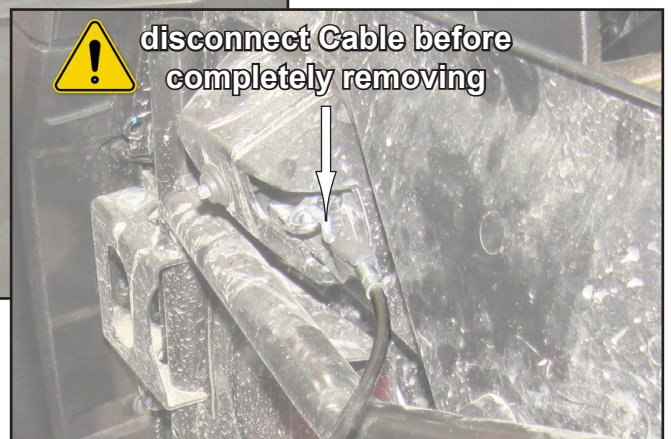
**remove Cover and Bolts**

set aside components

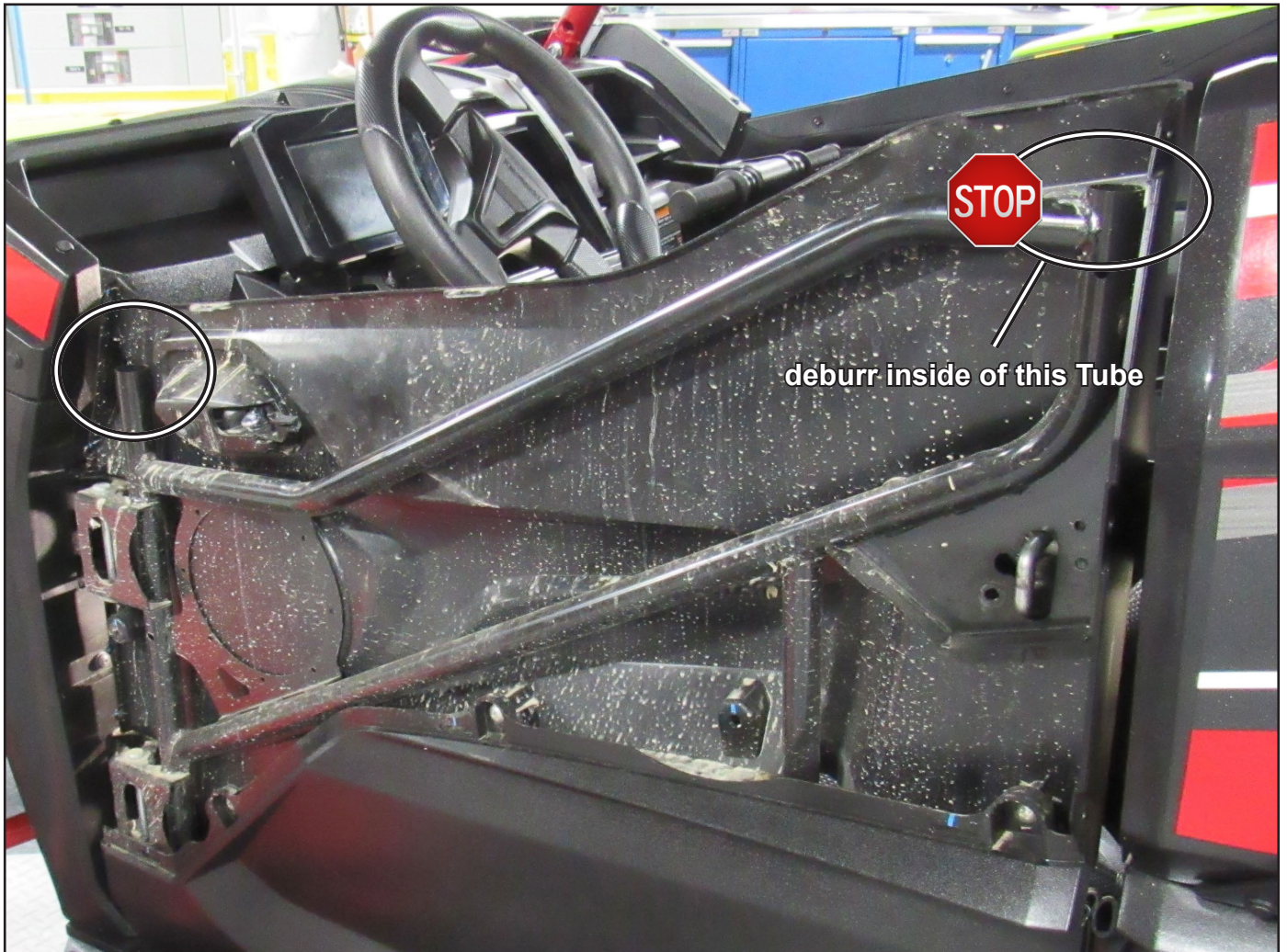
Remove stock Push Pins and hardware shown.

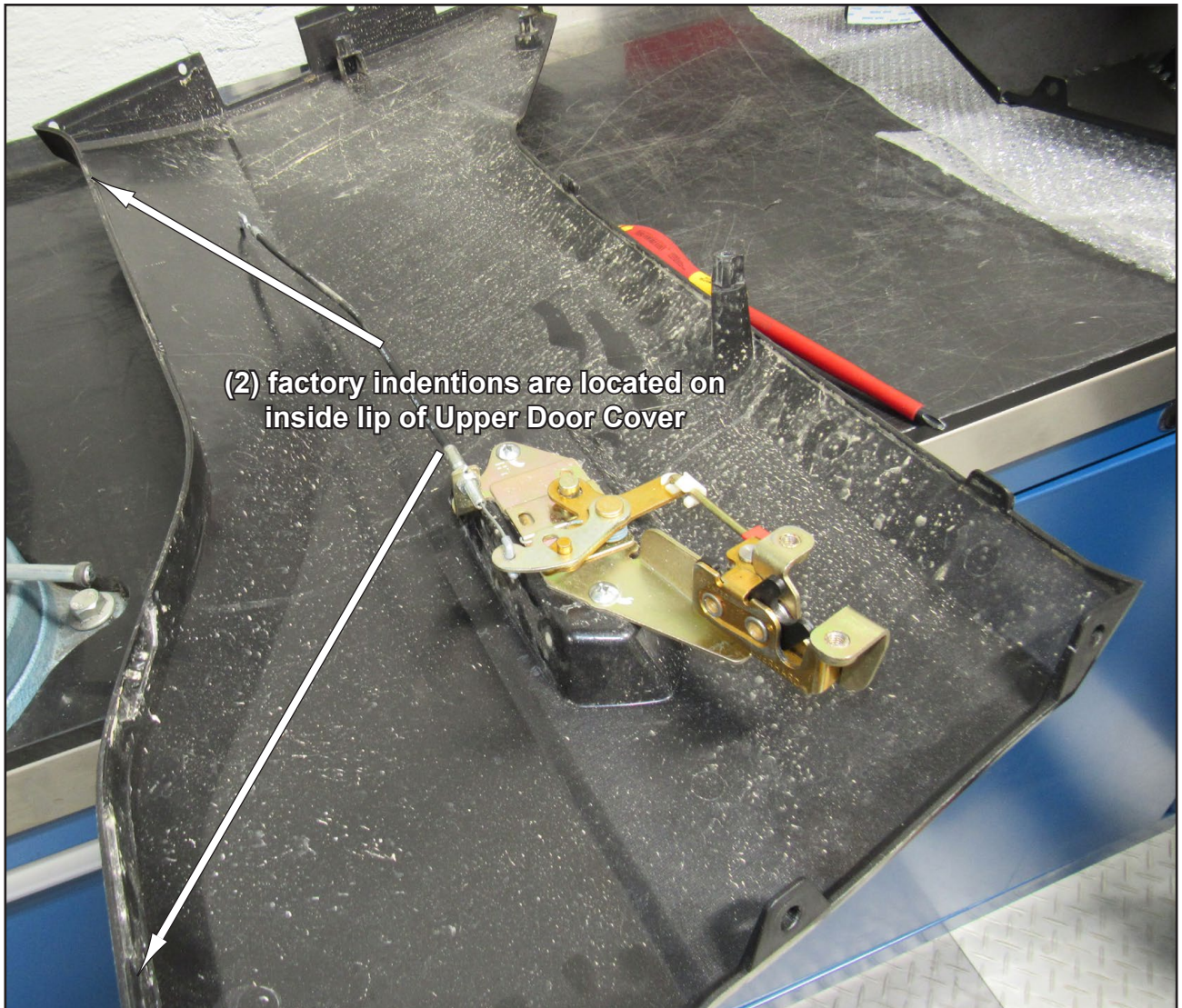


- Remove Door Cover.

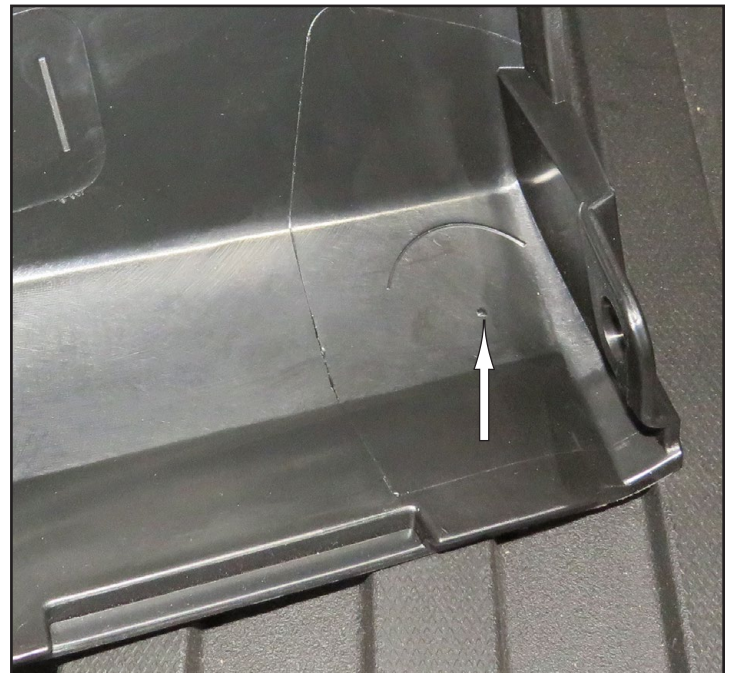


Note: Front Mount - L (F) and Rear Mount - L (G) will install into locations shown.





***Use a hole saw or step drill bit and cut (2) Ø1" holes through plastic.***



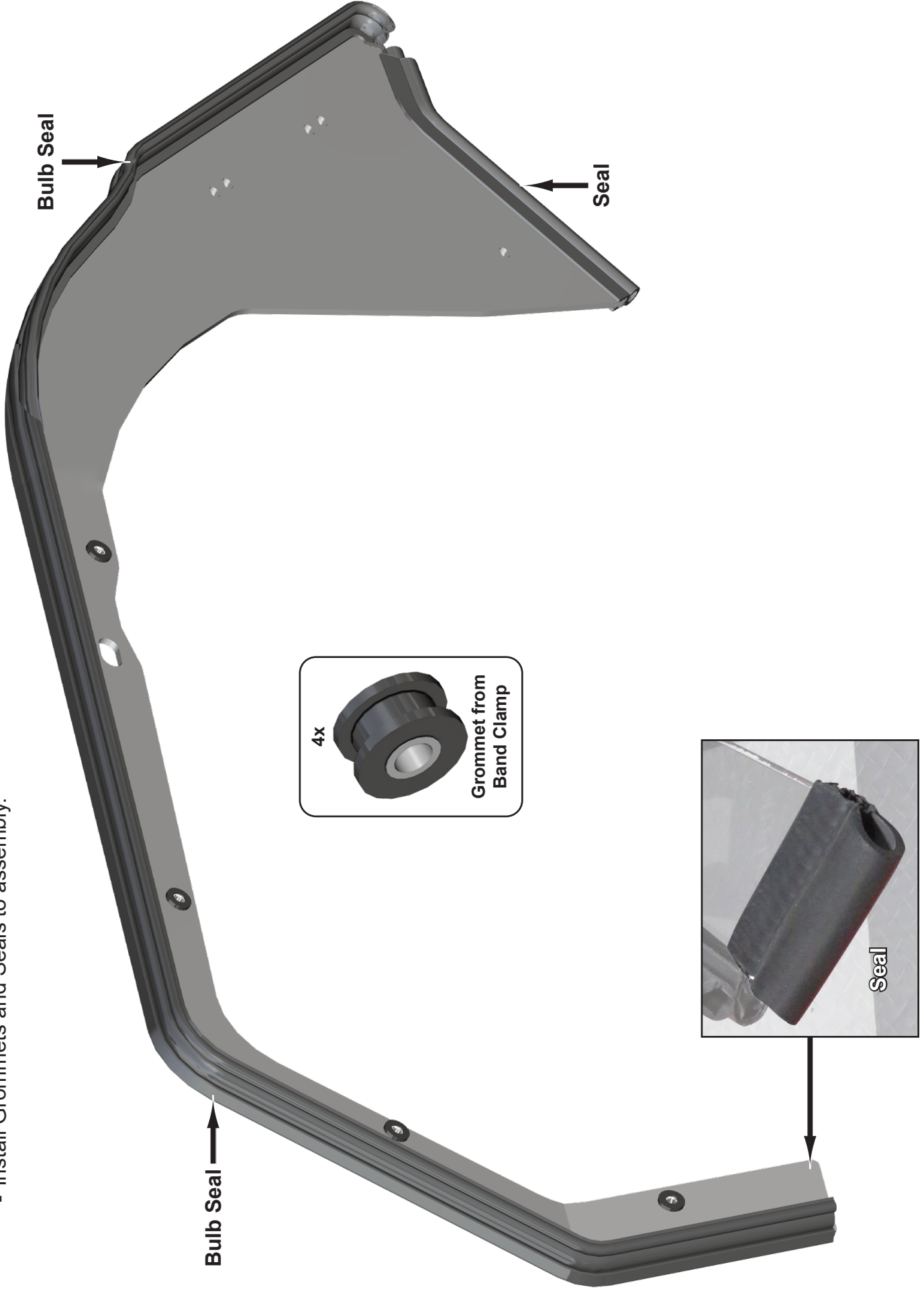
**Reinstall Door components to machine.**

When Doors are removed, install provided Plugs into new holes.

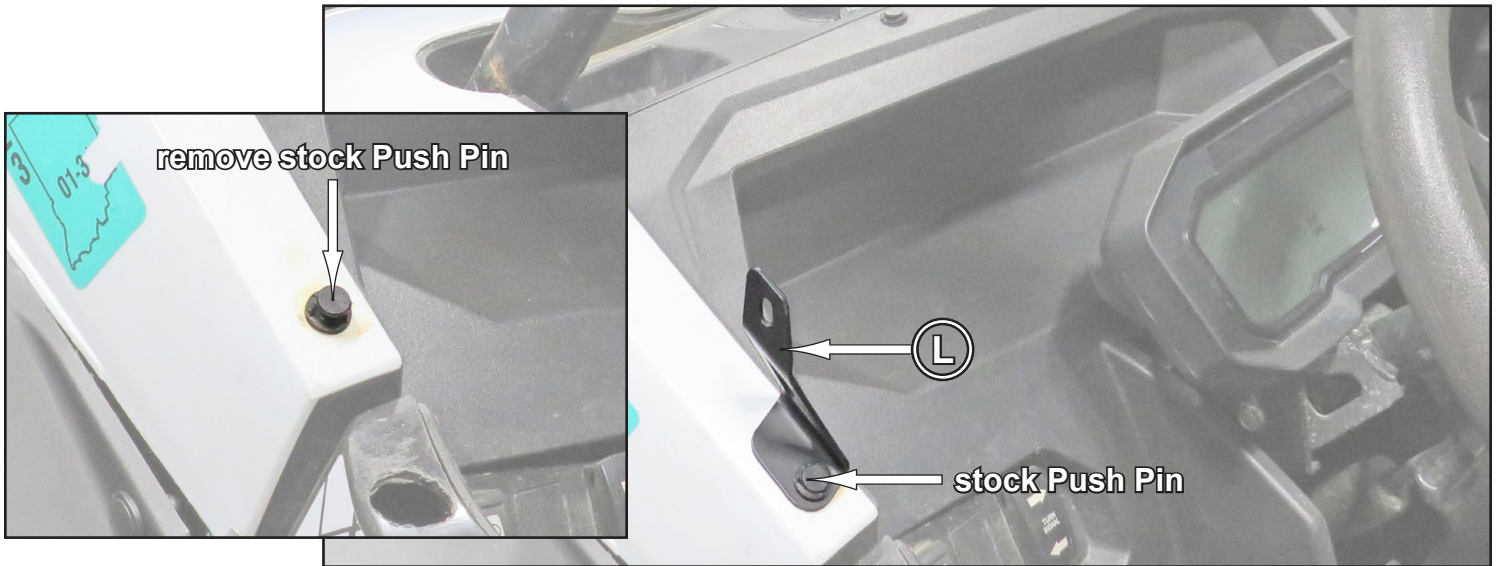


*To ease installation, soak Seal in hot water before cutting or installing to increase flexibility.*

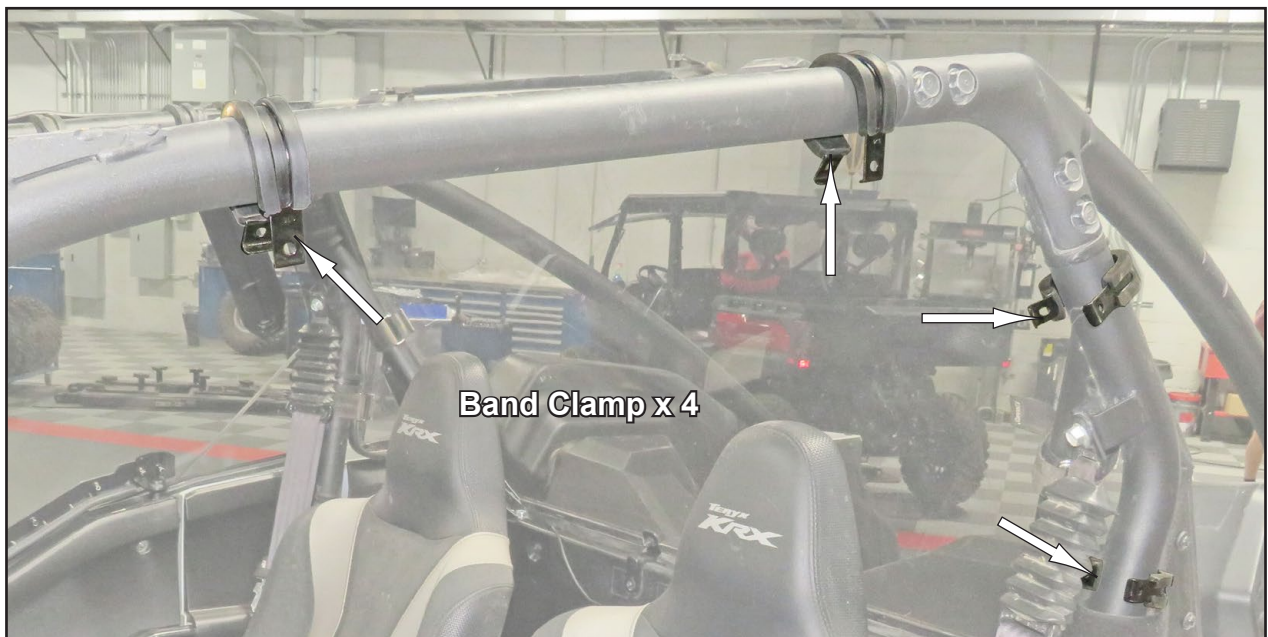
- Install Grommets and Seals to assembly.



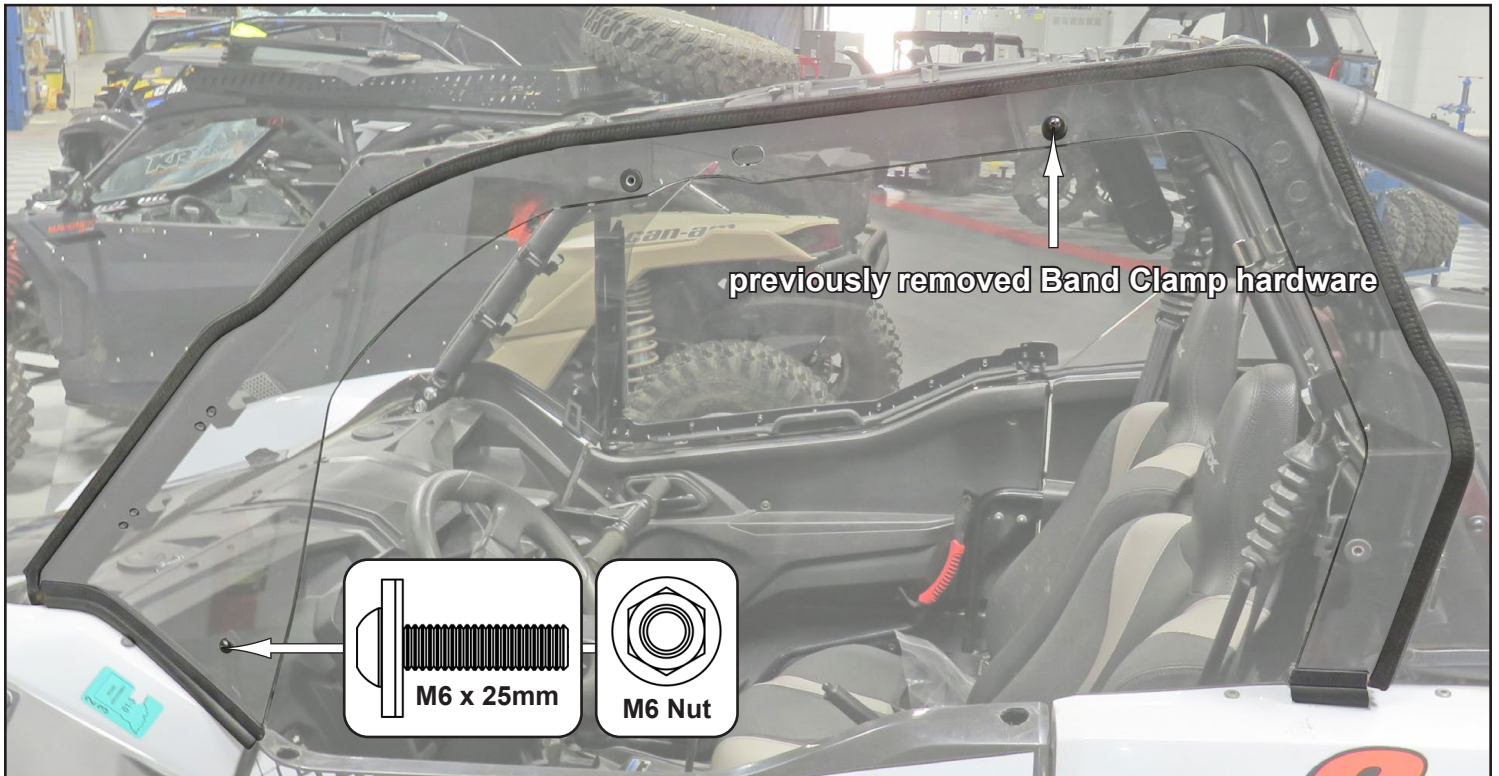
- Remove stock Push Pin and install Left Filler Plate Bracket (L) with stock Push Pin.



- Install Band Clamps around Cage in general locations shown.



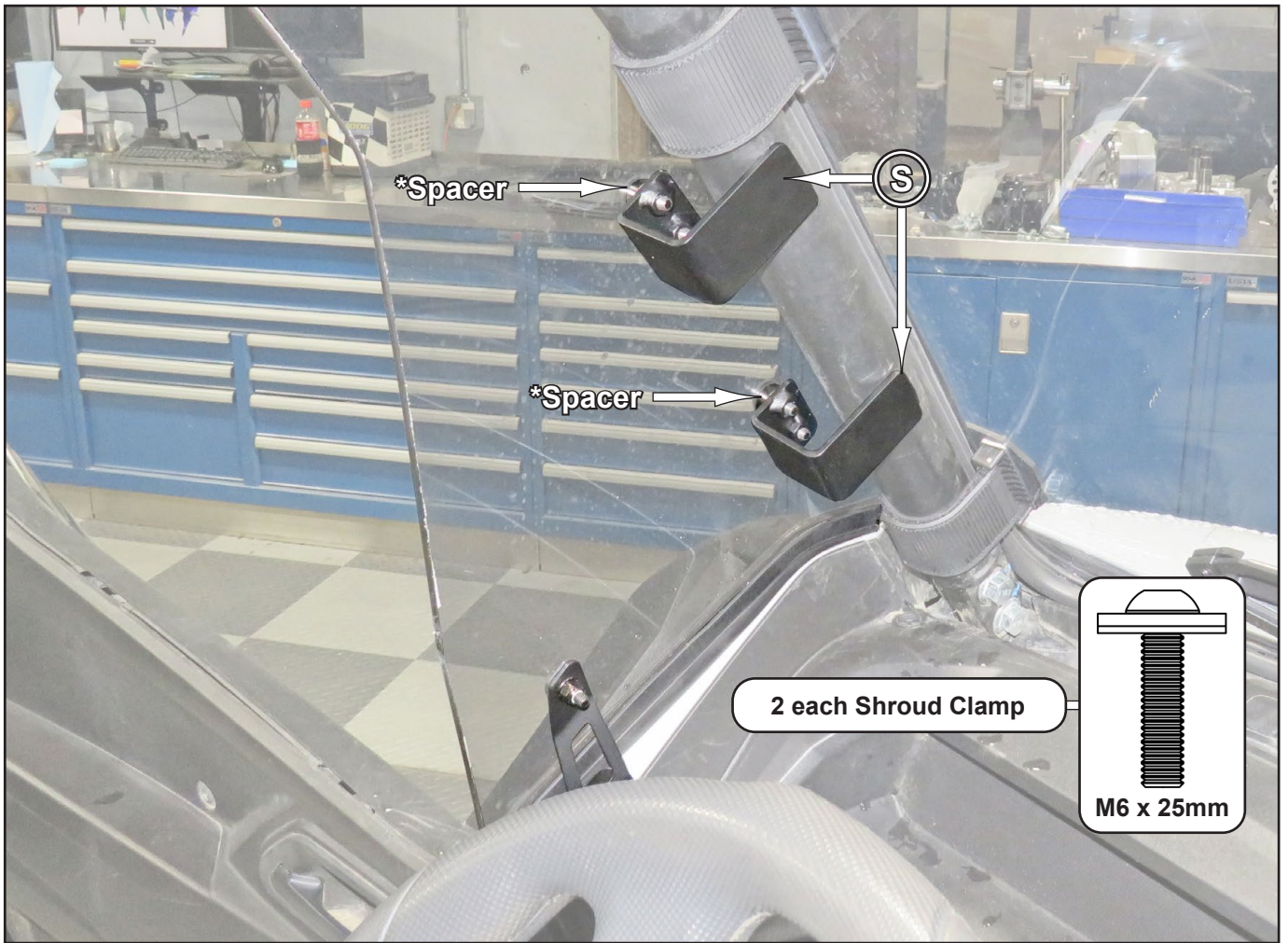
- Place assembly onto machine.
- Secure to Band Clamp with hardware shown; do not tighten.
- Secure to Left Filler Plate Bracket (L) with hardware shown; do not tighten.
- Align assembly to machine and tighten all hardware.



- Install remaining hardware and secure assembly to Clamps; tighten.

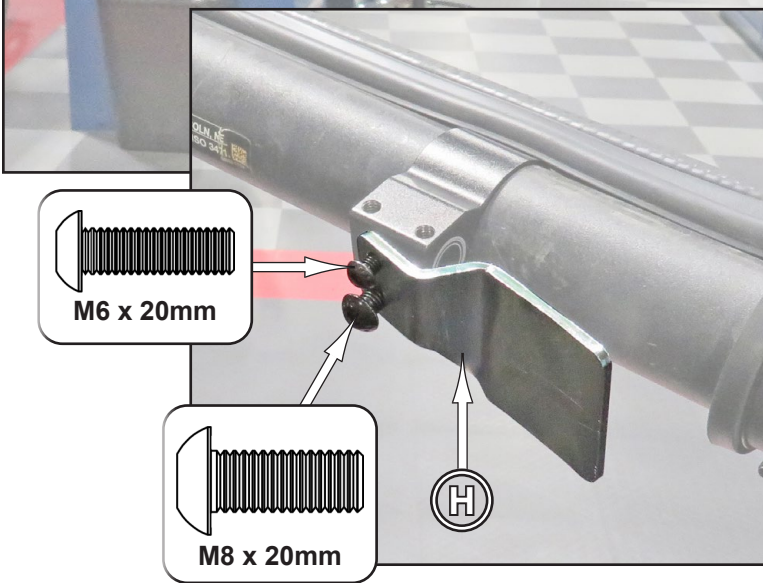


- Place Shroud Clamps (S) around Cage and secure to Shroud with hardware shown; tighten.



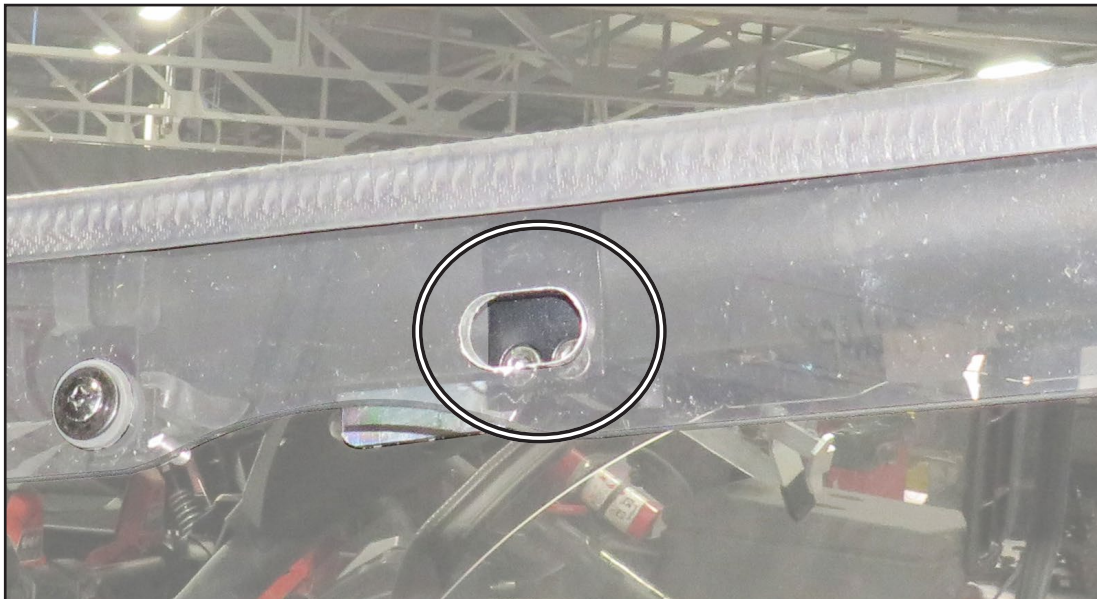
***\*Spacers will only be used with SuperATV Flip or Power Flip Windshields.***

- Install Aluminum Clamp to Cage in location shown; hardware snug but not tight.



- Install Left Catch (H) to Aluminum Clamp with hardware shown; tighten.

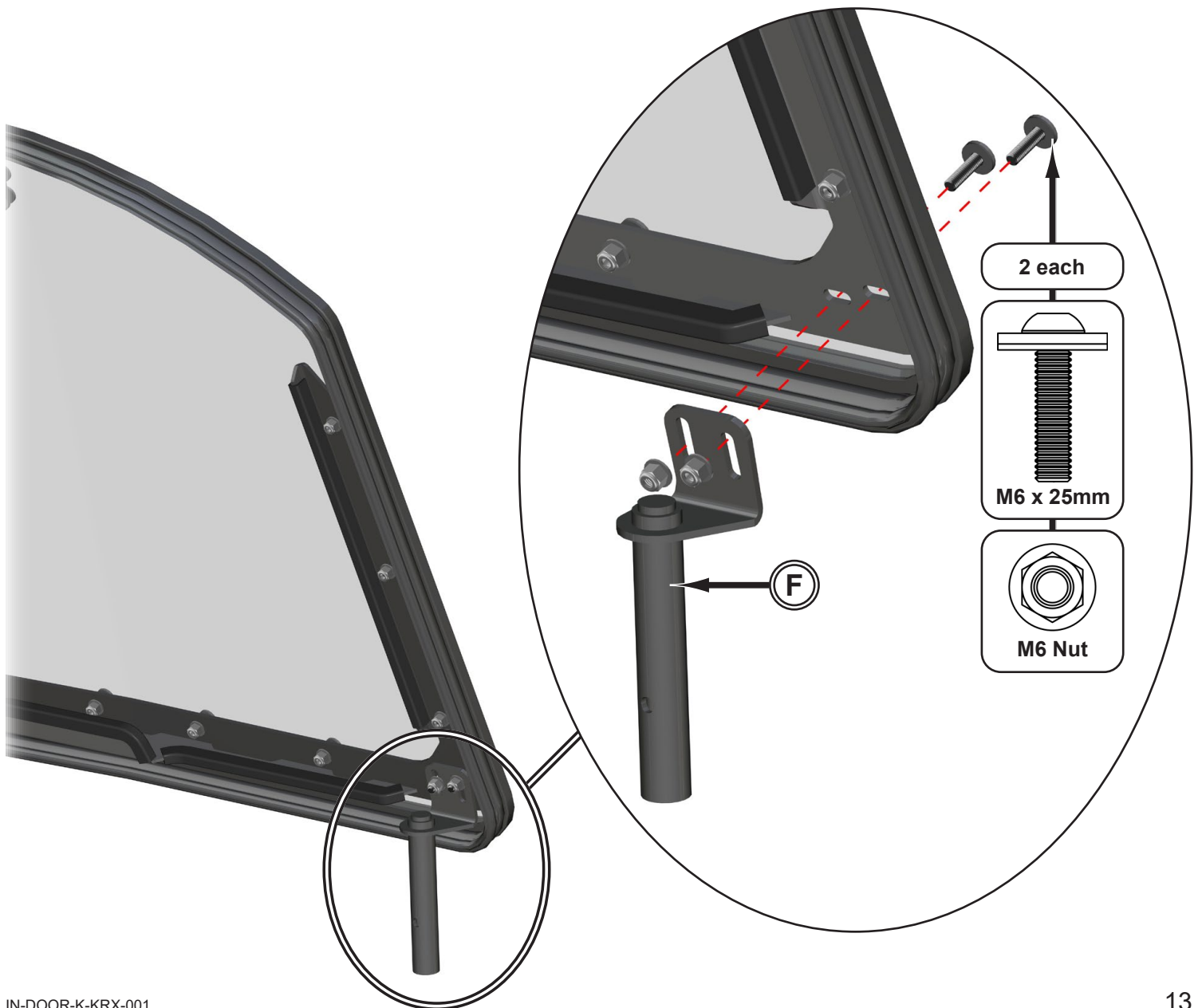
- Align Aluminum Clamp hardware to slot in Left Shroud (E); tighten.



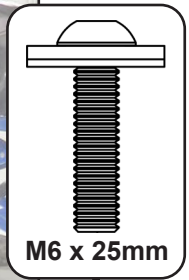
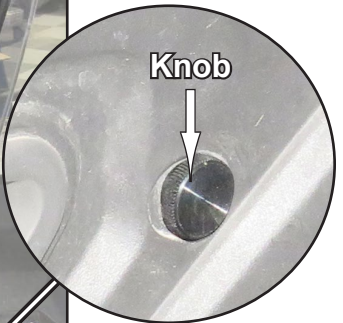
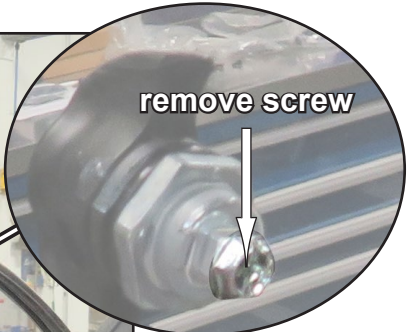
- Install Rear Mount - L (G) onto stock post in Door.



- Install Front Mount - L (F) to Left Door (A) with hardware shown; do not tighten.



- Install Left Door (A) to machine and secure Front Mount - L (F) with Knob; tighten.
- Ensure that Seals on lower portion of Left Door (A) are in contact with stock Upper Door Cover.
- Tighten Rear and Front Mount to Left Door (A) hardware.



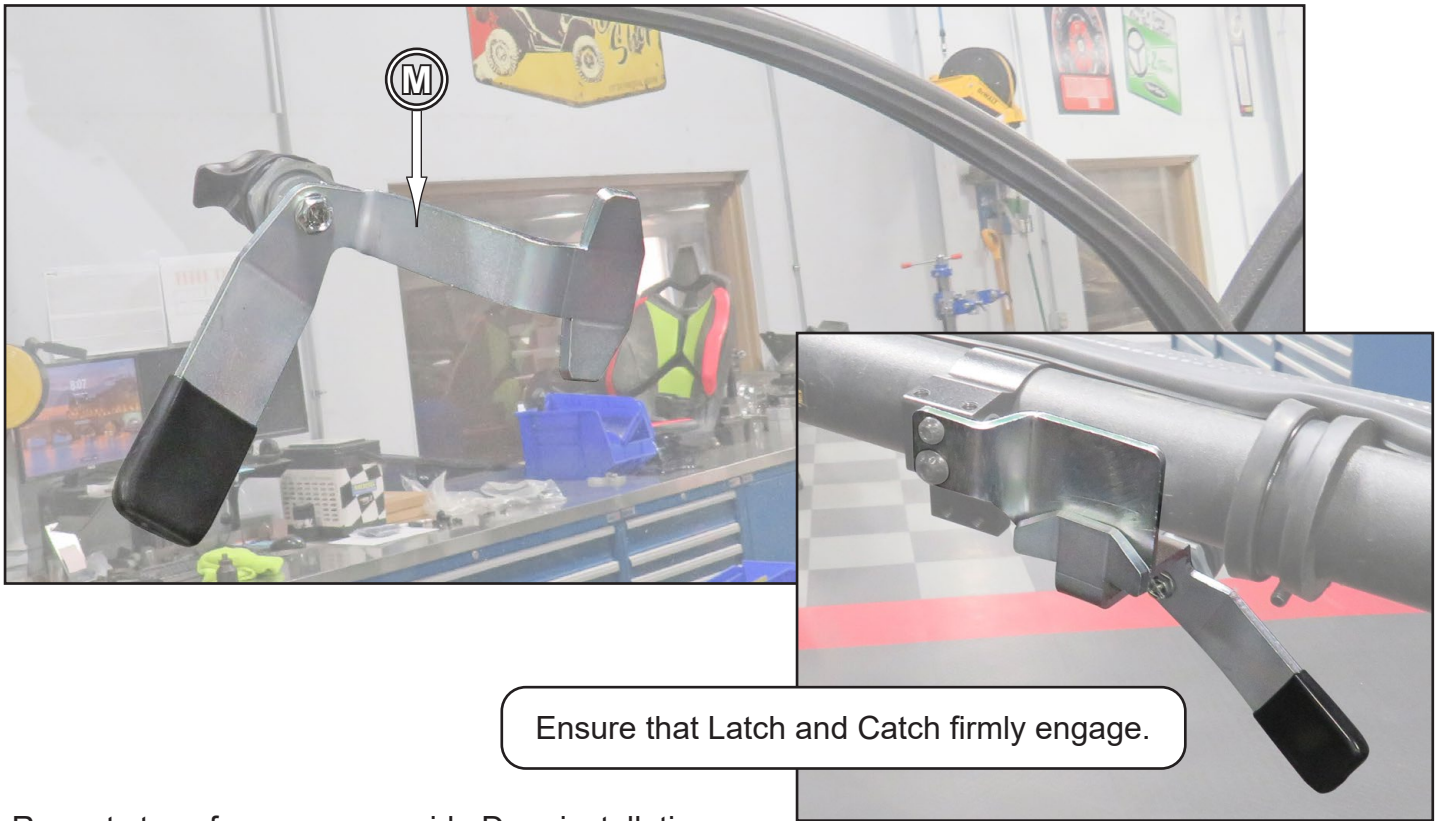
M6 x 25mm

2 each



M6 Nut

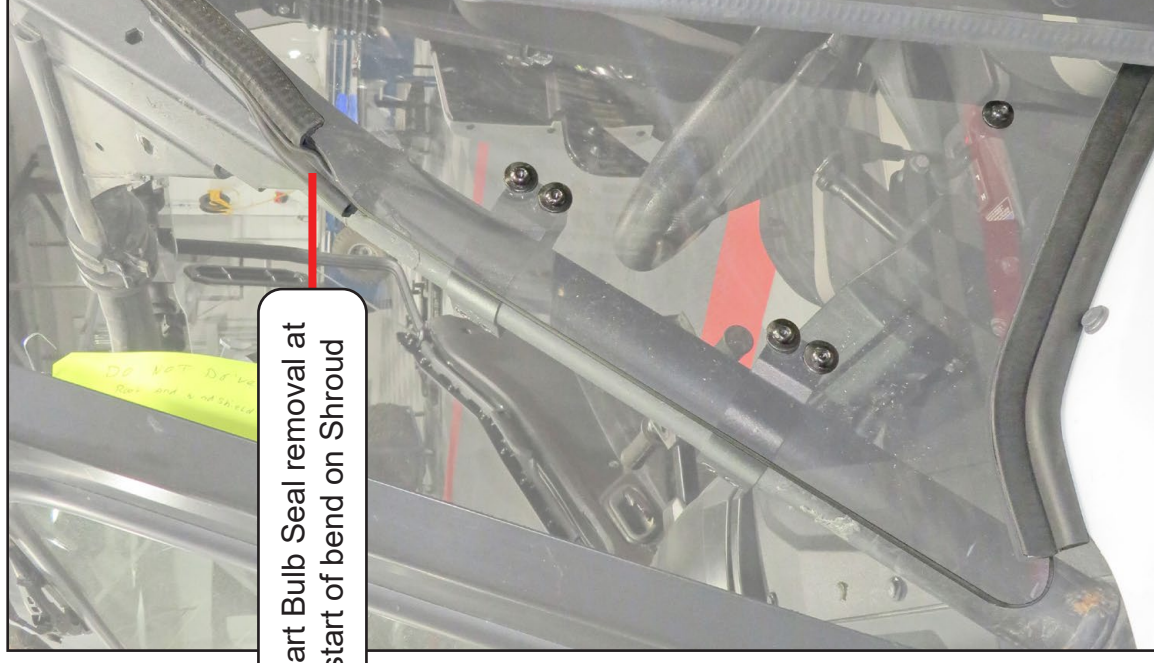
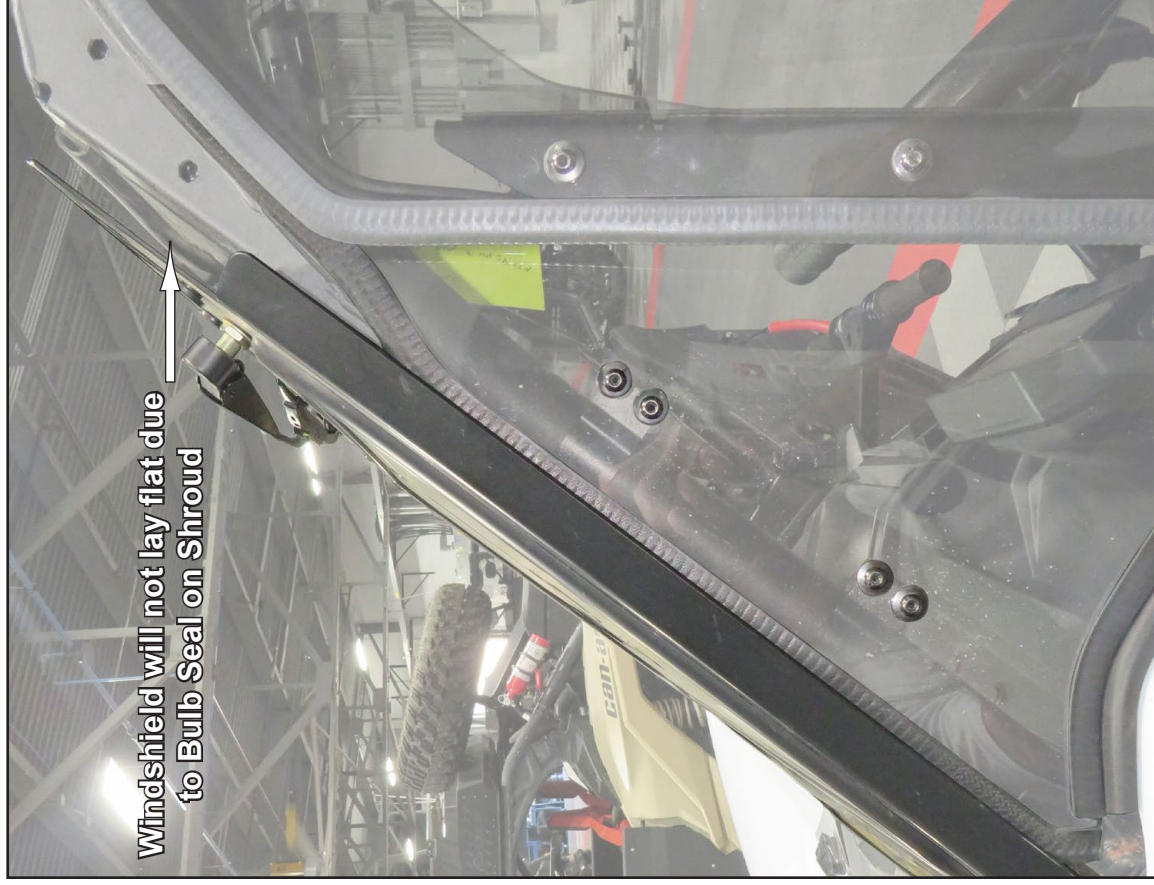
- Install Left Latch (M) with previously removed screw; tighten.



- Repeat steps for passenger side Door installation.

**SuperATV Glass Windshield notes:**

- If SuperATV Glass Windshield is installed, Bulb Seal on Shroud must be trimmed.



- Repeat for passenger side.