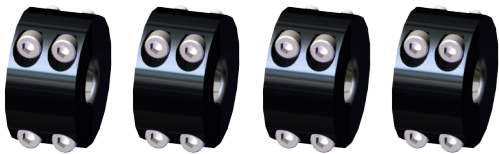
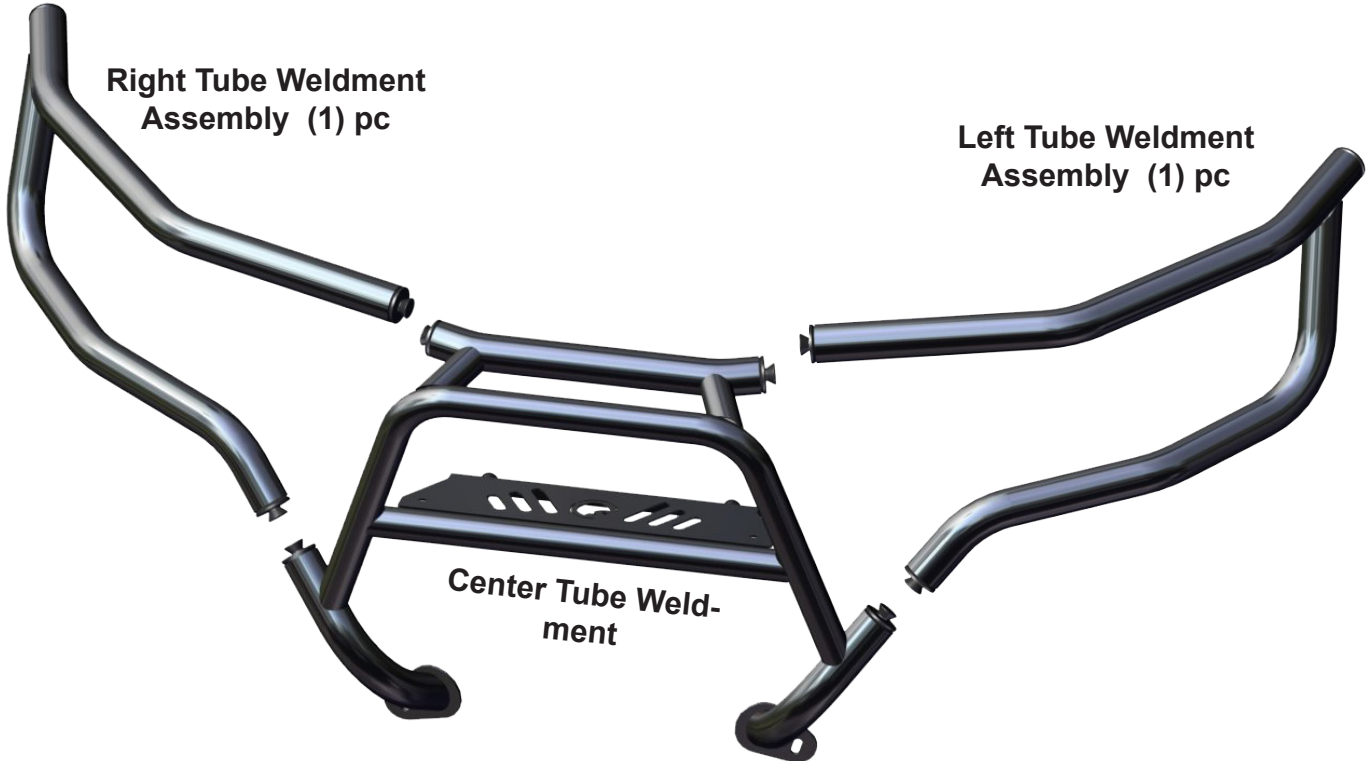


INSTALLATION INSTRUCTIONS
Front Brush Guard: FBG-CA-DEF-004



Tube Link Clamps (4) pcs



M8x60 Hex Flange Bolt (2) pcs



M8x25 Hex Flange Bolt (2) pcs



M8 Split Lock Washer (2) pcs



M10 Flat Washer (2) pcs



M8 Nylock Nut (2)



M12x30 Button Head (2) pcs



Tube Link Caps (2) pcs

1. First, you will start with the Center Tube Weldment section and mount the bottom (2) bolt locations first. You will use the (2) **M8x25 Hex Flange Bolts**, and **M8 Nylock Nuts** from your kit. Thread them in but leave a little loose until you get the other (2) bolts threaded in first, then you can adjust and tighten down. See **Fig.1** for the first (2) bolts installed.



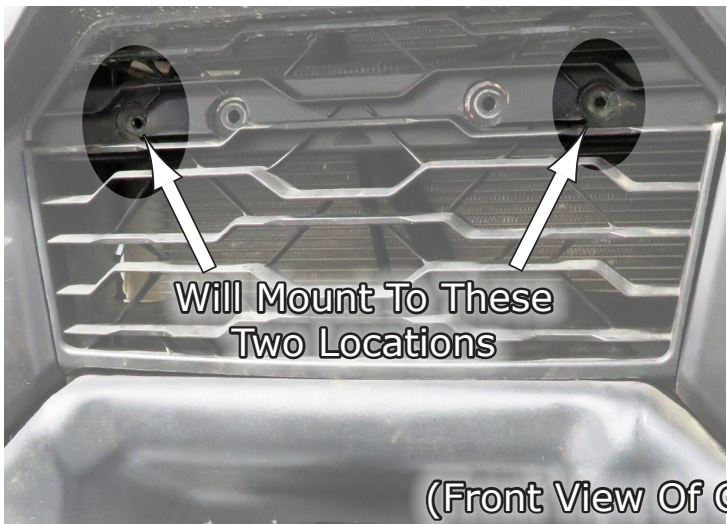
Fig.1



2. Now you can mount the upper (2) bolt locations of the Center Assembly. **Fig.2** shows these (2) locations on the assembly. You will then bolt it to your machine using the (2) **M8x 60 Hex Flange Bolts**, **M10 Flat Washers** and **M8 Split Lock Washers** on top of the washers, all provided in your kit. Once all (4) bolts are threaded, then secure tight. See **Fig.2-3**.



Fig.2



(Front View Of Grill Area Shown)

Fig.3

3. The next thing you will do is join the left and right side assemblies to the center one. Here we show the Left Side. Notice the Tube End Links that are inserted in the tubes on the ends. These will join the two assemblies together on each side. See **Fig.4**.

4. Now locate (2) of the Tube Link Clamps and take them apart. The two halves will look like the ones in **Fig.5b**. Then get the Left Tube Assy and line up the tube link ends together with the Center Assy as shown in **Fig.5a**, then slide one half of the link clamp onto the tubes and then the other half. Now take the bolts that came with them and thread the four bolts into the halves and tighten securely. Repeat for opposite side. See **Fig.5b**.



Fig.4



Fig.5a

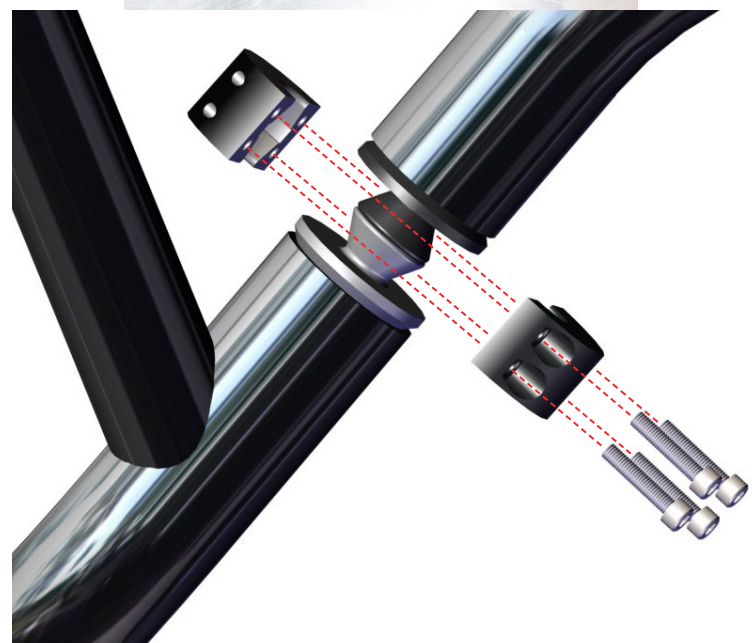
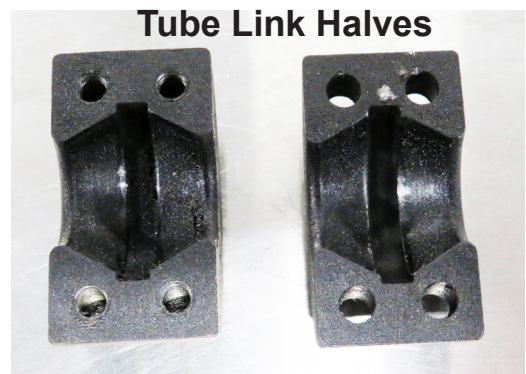


Fig.5b

5. Now the last thing is to install the Tube Link Caps, one each side. Install these using the (2) **M12x30 Button Head Screws** provided in your kit. See **Fig.6**.

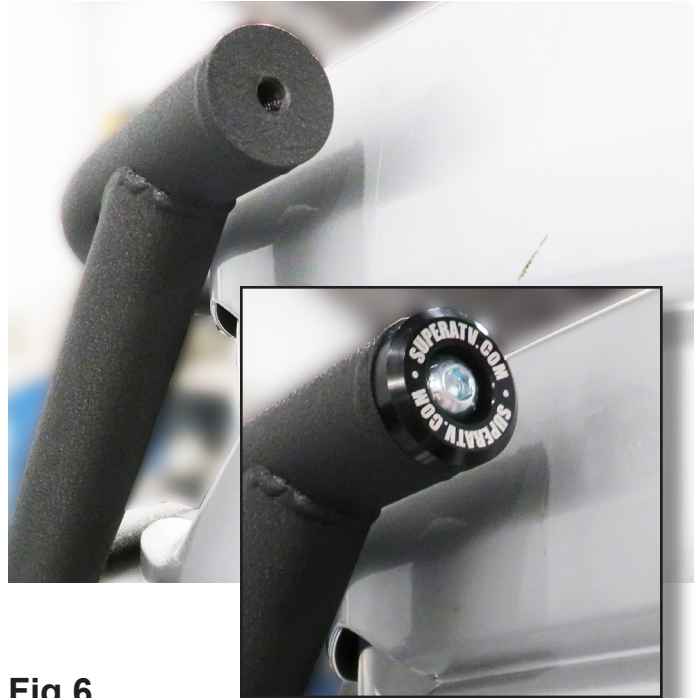


Fig.6

Liability Statement

SuperATV's® products are designed to best fit user's ATV/UTV under stock conditions. Adding, modifying, or fabricating any factory or aftermarket parts will void any warranty provided by SuperATV® and is not recommended. SuperATV's® products could interfere with other aftermarket accessories. If user has aftermarket products on machine, contact SuperATV® to verify that they will work together.

Although SuperATV® has thousands of satisfied customers, user should be aware that installing lift kits, long travel, or suspension kits, tires, etc. will change the ride of machine and may increase maintenance and part wear. Operating any off-road machine while, or after, consuming alcohol and/or drugs increases risk of bodily harm or death. No warranty or representation is made as to this product's ability to protect user from severe injury or death. SuperATV® urges operators and occupants to wear a helmet and appropriate riding gear at all times.

By purchasing and installing SuperATV® products, user agrees that should damages occur, SuperATV® will not be held responsible for loss of time, use, labor fees, replacement parts, or freight charges. SuperATV®, nor any 3rd party, will not be held responsible for any direct, indirect, incidental, special, or consequential damages that result from any product purchased from SuperATV®. The total liability of seller to user for all damages, losses, and causes of action, if any, shall not exceed the total purchase price paid for the product that gave rise to the claim.

SuperATV® will warranty only parts provided by SuperATV®. Any damage or problems with OEM housings, bearings, seals, or other manufacturers' products will not be covered by SuperATV®. SuperATV® parts and products are not warrantied if item was not installed properly, misused, or modified.

Installing, adding, modifying, or fabricating any factory or aftermarket product to your ATV/UTV may violate certain local, state, and federal laws. Be advised that laws vary depending on town, city, county, state, etc. Use of certain products on public streets, roads, or highways may be in violation law. The Buyer is solely and exclusively legally and personally responsible for any violation of the law by the installation or use of the product. You must abide by all local, state, and federal laws, including but not limited to vehicle safety, traffic laws, and ordinances. It is your responsibility to know the laws and how they apply to you.

The Buyer is responsible to fully understand the capability and limitations of his/her vehicle according to manufacturer specifications, warnings and instructions and agrees to hold SuperATV® harmless from any damage resulting from failure to adhere to such specifications, warnings and/ or instructions. The Buyer is also responsible to obey all applicable federal, state, and local laws and ordinances when operating his/her vehicle while using this product, and the Buyer agrees to hold SuperATV® harmless from any violation thereof.

If you have any problems/questions on this kit, contact us by email at [superatv.com](mailto:sales@superatv.com).

Need help with your installation?



sales@superatv.com



www.superatv.com



1-855-743-3427



8:00am - 9:00pm EST M-Th
8:00am - 7:00pm EST Friday
9:00am - 2:00pm EST Saturday

*Thank You
For Choosing*



Like SuperATV on Facebook to keep up to date on new products!