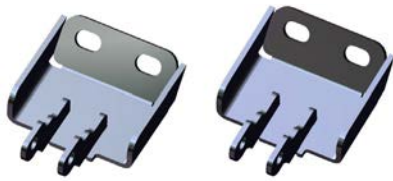


INSTALLATION INSTRUCTIONS
FWS-CF-U10: Flip Windshield

- ⓐ Please look through and read these instructions BEFORE starting so you understand what processes you'll be doing, and possible extra tools you may need.
- ⓐ Do Not discard product packaging until installation is complete and functioning properly.



Windshield Assembly



Hinge Assemblies



**Latch
Bracket Plate**



**Latch
Bracket Base**



**Lock Latch
Assembly**



Bulb Seal



Gas Shocks



Adhesive Backed Foam Seal



**M6
Nylock
Nut
(8pcs)**



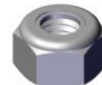
**M6x30
Button
Flanged
FT Screw
(4pcs)**



**M6x20
Button
FT Screw
(6pcs)**



**M8x30
Shoulder
Bolt
(2pcs)**



**M8
Nylock
Nut
(2pcs)**

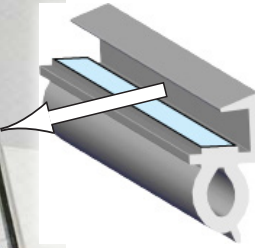


**M6x25
Button
FT Screw
(2pcs)**

WINDSHIELD PRE-INSTALLATION PREP



Before Installing the Windshield, you will need to install the Bulb Seal all around the outer edge of the windshield, Starting at the center of the bottom edge, go all the way around and cut to fit seam.



Install flat edge of seal towards outside of windshield, bulb facing inwards.



TIP! For much easier install, **DO NOT** remove the adhesive film first. First install the entire bulb to fit, then at the seam, peel back the edge of the film with bulb in place and pull it on out all the way around. Bulb will stay in place and then you can squeeze the edges to make it stick.

1. The first thing you need to do is **Remove** the **Hood** for access to route the Harness Cables. See **Fig.1a**. Then you will need to be able to raise the front edge of the roof in order to install the windshield hinges. So to do that you need to **Remove** the **Screws** that hold it down from inside the cab. There are **5 Screws** going across to remove. See **Fig.1b**.



Fig.1a



Fig.1b

2. After you have the roof screws removed, now you need to lift it up a little and put something under the roof to hold it up for you while you work. Then, you will need to **Install** the **Adhesive Backed Foam Seal** along the front lip of the windshield frame, both shown in **Fig.2**.



Fig.2

3. Start at one end feeding it across while applying pressure to the foam making sure it sticks to the frame. See Fig.3a-b.



Fig.3a

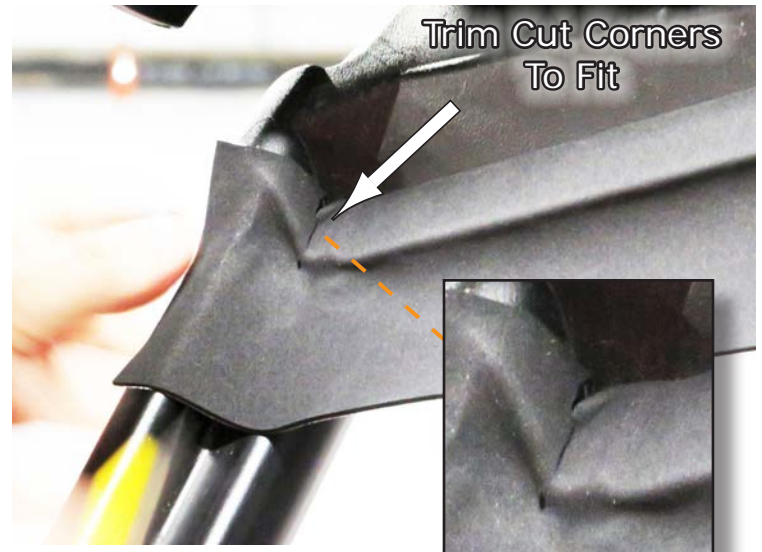


Fig.3b

4. Once applied, then trim cut the corners and excess hanging below the frame edge as shown in Fig.4.



Fig.4

5. After trimming the Foam seal and applying under the windshield hinges, you can now start to **Install the Windshield Hinges** to the vehicle. To do that, remove the Two (2) Screws, on each side in the recessed areas, shown in **Fig.5a-b**. Then find the **Hinge Assemblies** that mount on the roof, and install them using the factory screws you just removed, as shown in **Fig.5c**. Repeat this same procedure both of the hinges. Leave them slightly loose to be able to adjust in the steps ahead.



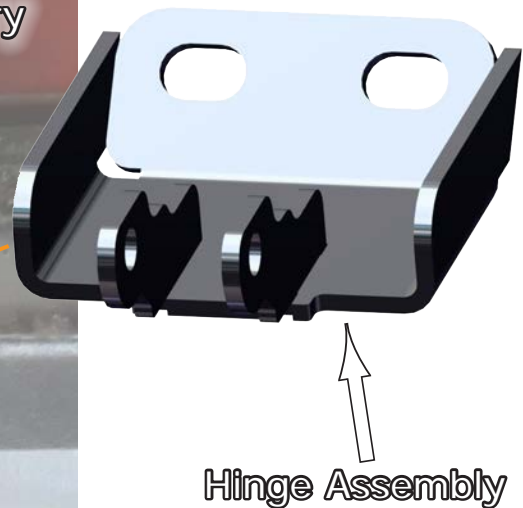
Fig.5a



Fig.5b



Fig.5c



6. Next you can take the **Windshield** and set it onto the vehicle, as shown in **Fig.6a**, ready to **Install the Hinge Halves** together in the next steps.



Fig.6a



7. When setting the Windshield onto the vehicle, go ahead and align the Hinge Halves Together, but make sure the **Hinge Spacers** are installed on each side of the windshield hinge half as shown in **Fig.7a**. Then slide the Windshield Hinge into the Roof Hinge and Install using the **M8x30 Shoulder Bolt & M8 Nylock Nut**, then tighten secure as shown in **Fig.7b-d**. Repeat the same procedures for the opposite hinge location.

NOTE: You may need to Loosen ,Adjust and Tighten the hinge bolts a few times to adjust the Windshield to fit properly. Once you have it in a desired position, then tighten all screws and bolts secure.



Fig.7a



Fig.7b



Fig.7c

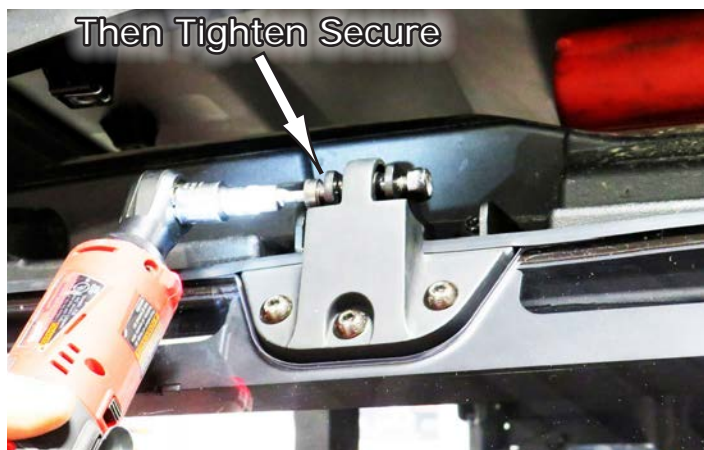


Fig.7d

8. Now you're ready to **Install the Roof Bolts** back into the vehicle. Reinstall a roof bolts at this time. See **Fig.8**.



Fig.7d



11. Now you can install the Lower Cylinder to the vehicle. **Fig.11a** shows where you will be connecting the lower cylinder bracket to the windshield bracket. Install it into the last hole position on the bracket using the Nylock Nut from your kit. **Fig.11b** shows it on the actual frame. Repeat for both sides.

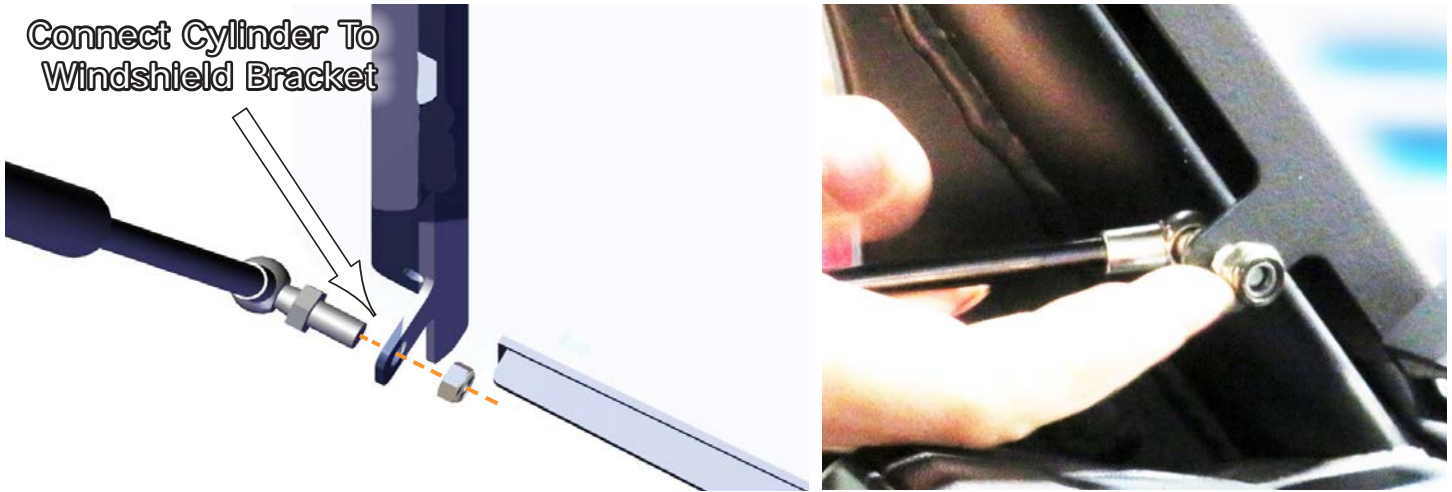


Fig.11a

Fig.11b

12. After the lower end of the Gas Shocks installed, now you can install the upper end. Raise the Windshield all the way up and extend the Gas Shock so that it reaches the threaded hole in the frame as shown in **Fig.12a-b**. Then tighten the shock secure as shown in **Fig.12b-c**. Repeat for opposite side Shock.



Fig.12a



Fig.12b



Fig.12c

13. Now that the Gas Shocks are installed, you can now **Install** the **Lock Latch Assembly**. The first thing you need is the **Front Plate** as shown in **Fig.13a** and the **M6x20 FT Button Screws** and **M6 Nylock Nuts** provided in your kit. Now you will install the plate on the outside of the windshield using the **M6x20 Button FT Screws** and **M6 Nylock Nuts** provided in your kit. See **Fig.13b-c**.



Fig.13a



Fig.13b

14. Then find the **Latch Handle Assembly** and place it on the other side of the windshield and front plate as shown in **Fig.14a**, and install it to the windshield using the **M6 Nylock Nuts** as shown in **Fig.14b**, and tighten secure.



Fig.14a



Fig.14b

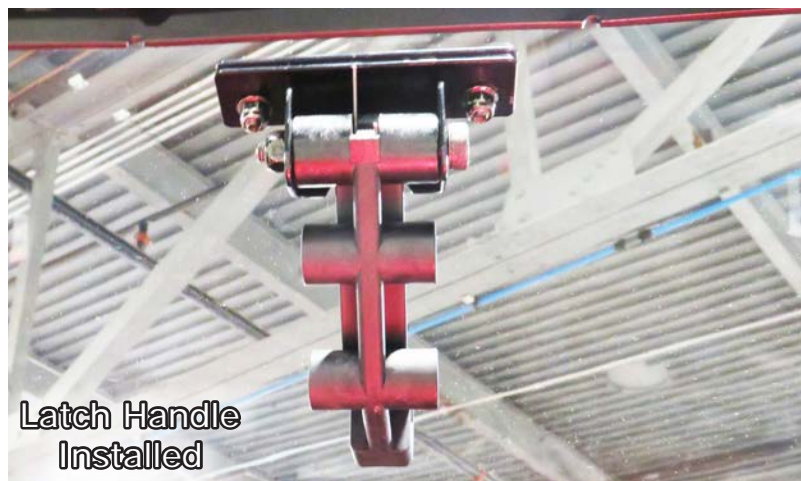


Fig.14a

15. Next you will install the bottom half of the **Lock Latch System**. First locate the **Latch Block** and the **Latch Bracket Base**, and install the **Latch Block** onto the Base using the **M6x20 FT Button Screws** and M6 Nylock Nuts all provided in your kit. Install the **Latch Block** onto the **Base** but do not tighten down. Just lightly snug for now as you may need to adjust the position once the base is secure to the vehicle. See **Fig.15a-b**.

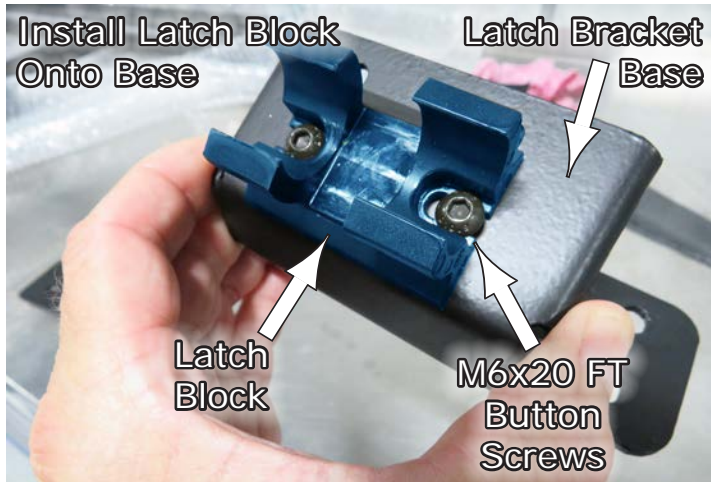


Fig.15a



Fig.15b

16. Now you need to prep to install the Base to the vehicle next. So find the **Latch Bracket Plate** and **Four (4) M6x30 Button Flanged Screws** in your kit as shown in **Fig.16**. You will use the **Bracket Plate** as a **Template** to mark and drill thru the dash so you can mount the base. See **Fig.16**.

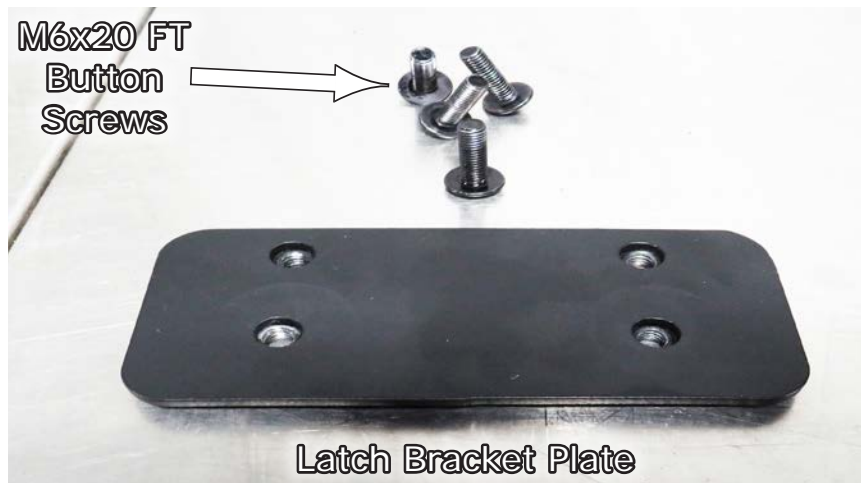


Fig.16

17. So to **Install** the **Base**, notice on the dash in from of the center console are **Two (2) Dimples** made into the dash from the Factory as shown in **Fig.17a-b**. This is where you will mount the **Bracket Base** using the Two (2) Factory Dimple locations and another Two (2) marked from your **Latch Bracket Plate** in your kit as a template in the next steps.



Fig.17a

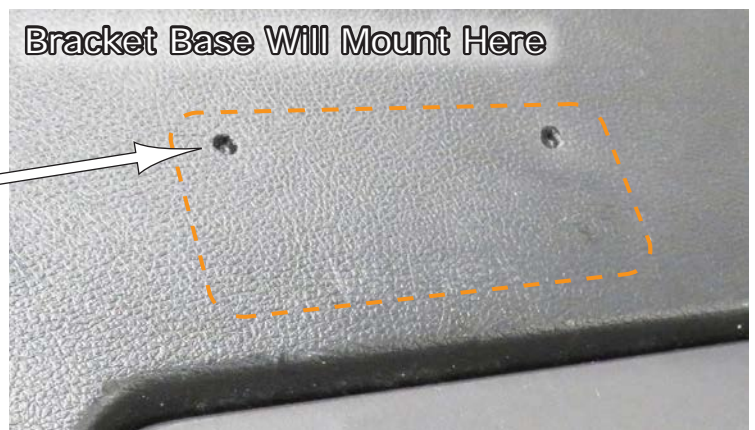


Fig.17b

18. So find the **Latch Bracket Plate** in your kit. Align it over the Two (2) **Factory Dimples** to align the other holes to mark. **Fig.18a** shows using the Bracket Plate matching the Two (2) holes of the Plate to the Dimples, then **Marking** the **Other Two (2) Holes** with a drill bit (or pen). **Fig.18b** shows ours marked and ready to drill. You will drill thru each of these locations next steps.



Fig.18a



Fig.18b

19. Before drilling the holes, pull the center dash cluster out and away to check up underneath to see if you might hit anything while drilling. This also gave us a little more room while drilling. See **Fig.19a**. **Fig.19b** shows drilling the holes thru. **Fig.19c** shows holes drilled.



Fig.19a



Fig.19b



Fig.19c

20. To Mount the **Bracket Base** to the dash, take the **Latch Bracket Plate** and hold it up under the dash with the welded nuts on the plate facing down as shown in **Fig.20a**. Then set **Latch Bracket Base** on dash aligning holes and install using the **M8x30 Button Flanged Screws** going into the Bracket Plate as shown in **Fig.20b-c**, and tighten down all screws secure. Then loosen the Latch Block Screws so that it can slightly move and set into position when trying the Latch Lock Handle. See **Fig.20d**.



Fig.20a



Fig.20b



Fig.20c



Fig.20d



21. Now pull the windshield in and **Try the Lock Latch** to see how it snap into the **Latch Block**. Check to see that Windshield seals good all around. You can loosen the screws of the Latch Block and the Latch in the windshield to move and adjust the fit if needed. Once you've found the desired position, tighten all screws back down secure when done. See **Fig.21a-b**.



Fig.21a



Fig.21b



22. After you have the Windshield working properly, now go back and **Reinstall all the Roof Screws and Tighten Secure**. See **Fig.22**



Fig.22



Liability Statement

SuperATV's® products are designed to best fit user's ATV/UTV under stock conditions. Adding, modifying, or fabricating any factory or aftermarket parts will void any warranty provided by SuperATV® and is not recommended. SuperATV's® products could interfere with other aftermarket accessories. If user has aftermarket products on machine, contact SuperATV® to verify that they will work together.

Although SuperATV® has thousands of satisfied customers, user should be aware that installing lift kits, long travel, or suspension kits, tires, etc. will change the ride of machine and may increase maintenance and part wear. Operating any off-road machine while, or after, consuming alcohol and/or drugs increases risk of bodily harm or death. No warranty or representation is made as to this product's ability to protect user from severe injury or death. SuperATV® urges operators and occupants to wear a helmet and appropriate riding gear at all times.

By purchasing and installing SuperATV® products, user agrees that should damages occur, SuperATV® will not be held responsible for loss of time, use, labor fees, replacement parts, or freight charges. SuperATV®, nor any 3rd party, will not be held responsible for any direct, indirect, incidental, special, or consequential damages that result from any product purchased from SuperATV®. The total liability of seller to user for all damages, losses, and causes of action, if any, shall not exceed the total purchase price paid for the product that gave rise to the claim.

SuperATV® will warranty only parts provided by SuperATV®. Any damage or problems with OEM housings, bearings, seals, or other manufacturers' products will not be covered by SuperATV®. SuperATV® parts and products are not warranted if item was not installed properly, misused, or modified.

Installing, adding, modifying, or fabricating any factory or aftermarket product to your ATV/UTV may violate certain local, state, and federal laws. Be advised that laws vary depending on town, city, county, state, etc. Use of certain products on public streets, roads, or highways may be in violation law. The Buyer is solely and exclusively legally and personally responsible for any violation of the law by the installation or use of the product. You must abide by all local, state, and federal laws, including but not limited to vehicle safety, traffic laws, and ordinances. It is your responsibility to know the laws and how they apply to you.

The Buyer is responsible to fully understand the capability and limitations of his/her vehicle according to manufacturer specifications, warnings and instructions and agrees to hold SuperATV® harmless from any damage resulting from failure to adhere to such specifications, warnings and/ or instructions. The Buyer is also responsible to obey all applicable federal, state, and local laws and ordinances when operating his/her vehicle while using this product, and the Buyer agrees to hold SuperATV® harmless from any violation thereof.

If you have any problems/questions on this kit, contact us by email at Superatv.com.

Need help with your installation?



sales@superatv.com



www.superatv.com



1-855-743-3427



8:00am - 9:00pm EST M-Th
8:00am - 7:00pm EST Friday
9:00am - 2:00pm EST Saturday

*Thank You
For Choosing*



Like SuperATV on Facebook to keep up to date on new products!