

INSTALLATION INSTRUCTIONS

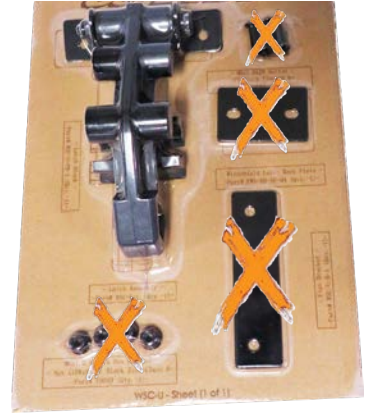
Flip Windshield: FWS-P-PROR-001

- 🔗 Please look through and read these instructions BEFORE starting so you understand what processes you'll be doing, and possible extra tools you may need.
- 🔗 Do Not discard product packaging until installation is complete and functioning properly.



Windshield Assemblies

You Will NOT Be Using
Items Marked With Orange X



Latch Kits (2pcs)



Straight Bulb Seal



Adhesive Backed Rubber Seal



Wide Adhesive Backed Foam Strip - (Optional, See Instructions P.3)



90° Rubber Bulb Seal-Type 2



Gas Cylinders



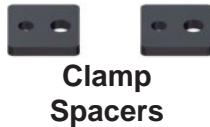
Latch Block Bracket



2" Aluminum Clamps



Top Hinges



Clamp Spacers



Windshield Brackets



M6x25 Button Sealing (4pcs)



M6x20 Button Sealing (4pcs)



M6 Nylock Nut (12pcs)



M6x14 Button Head (4pcs)



M8x14 Button Head (2pcs)



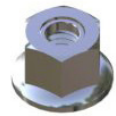
M6x20 Button Head (2pcs)



M8 Nylock Nut (4pcs)



M8x20 Carriage Bolt (4pcs)



M8 Nylock Nut (4pcs)

1. The first thing you need to do is **Install** the Top Hinges into the Bottom Hinges. See **Fig.1a**. Then **Install** the **90° Bulb Seal** Along the Top and Two Sides of the Windshield as shown in **Fig.1b**.

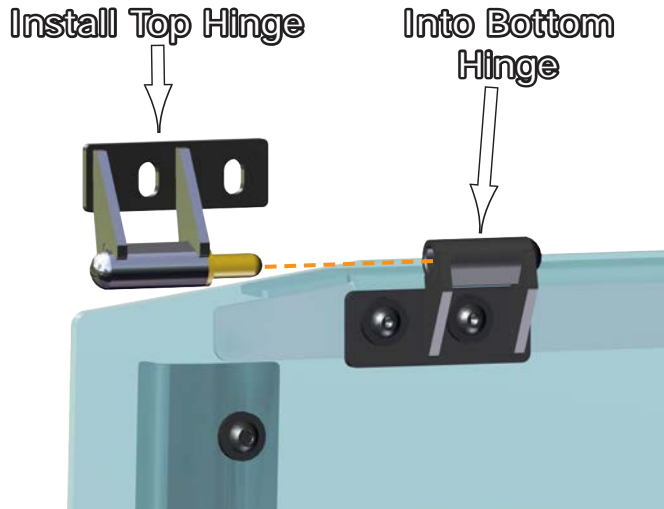
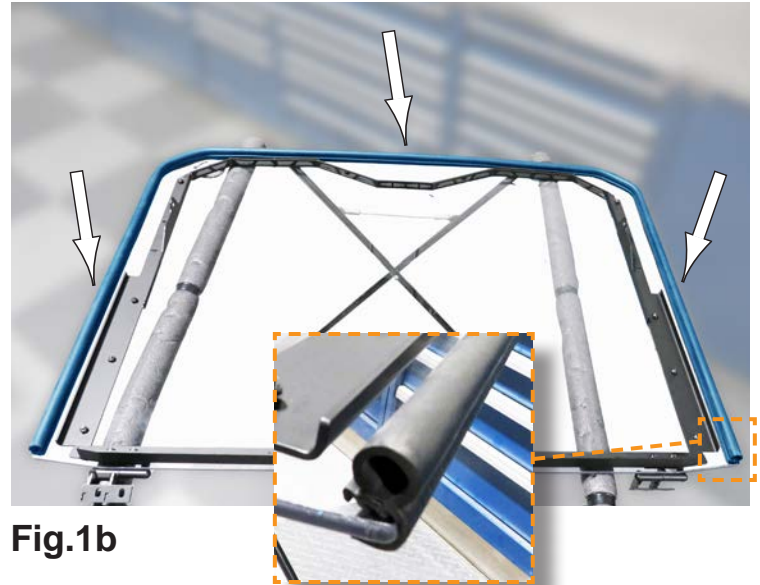


Fig.1a



2. Now get the **Top Half** of the **Windshield** as shown in **Fig.2a**, and **Install** the **Straight Bulb Seal** **Along** the **Top Edge** of the assembly as shown in **Fig.2b-d**.



Fig.2a



Fig.2b



Fig.2c

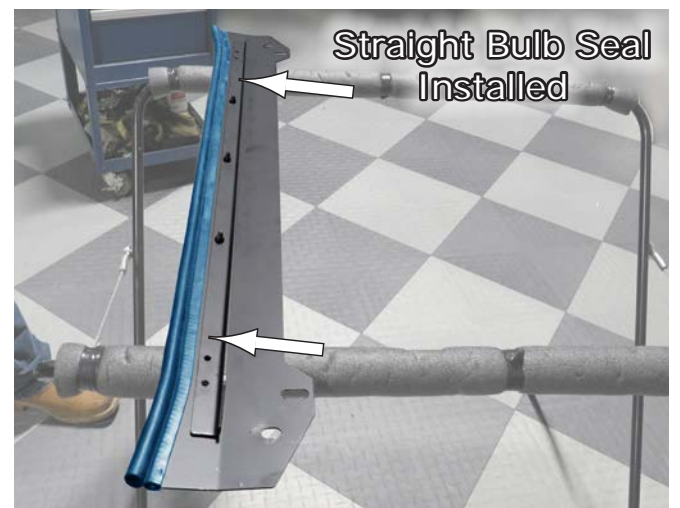


Fig.2d

3. Next, you will need to install the **Top Half** of the **Windshield Assembly** to the vehicle, but first you need to remove two (2) Roof Screws From each side to be able to raise the roof up a little for easier installation. Then apply some **Adhesive Backed Flat Seal** to Two (2) Flat Areas as shown in **Fig.3a-b**. You will just cut to fit the length of the area shown.

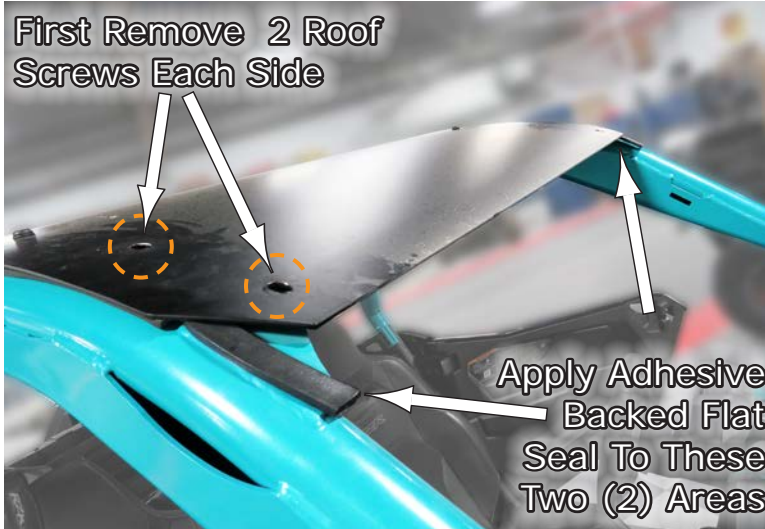


Fig.3a

Fig.3b

4. Then take the Top Half and slide it up under the roof and over the Flat Seal you just installed as shown in **Fig.4a**. Then align the bolt holes you will install next.

NOTE:The **Wide Adhesive Backed Foam Strip** is not required for this installation, and is **Only Optional** for you to use should you have an Aluminum or Metal Roof. This is provided to go between the Roof and Visor Panel to help with better sealing from water intrusion and or as extra protection to the painted surfaces, vibration etc. if needed. See **Fig.4** for basic placement area, shown with dotted line.

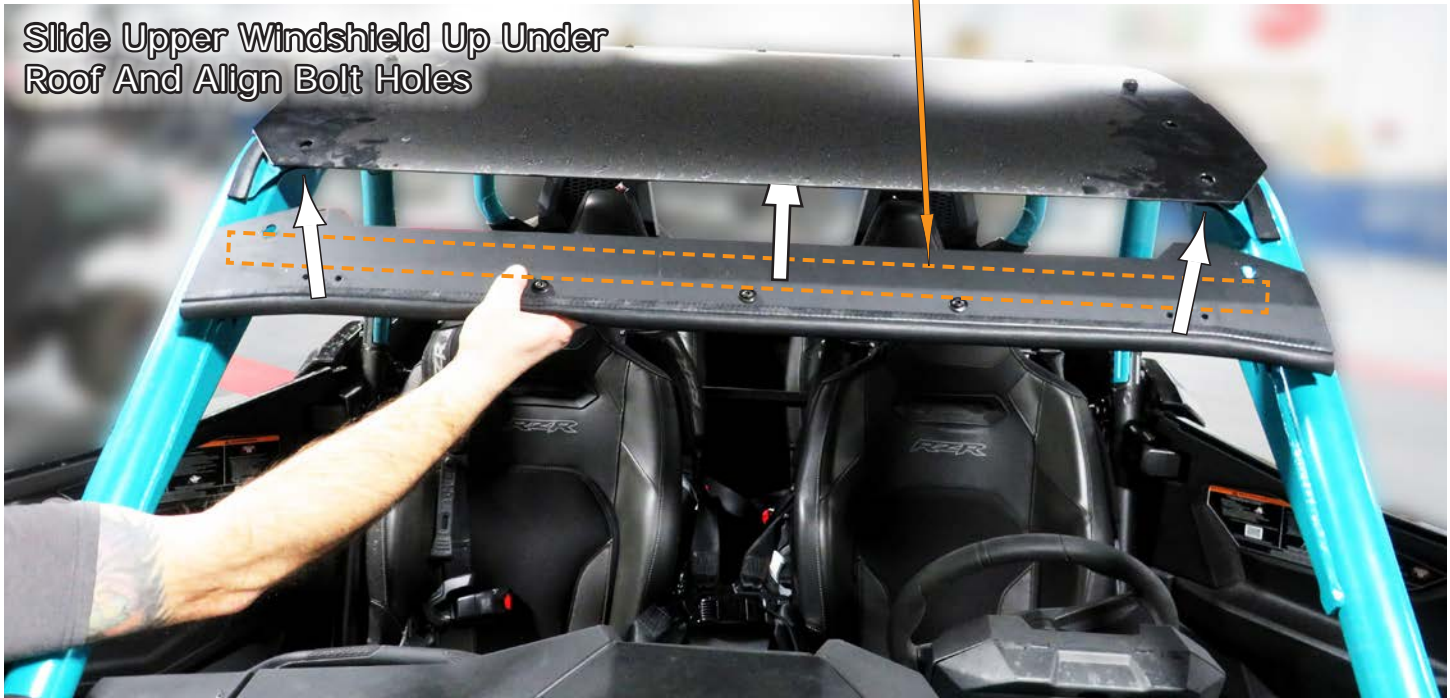


Fig.4

5. Now **Align** the **Holes** for the **Roof Screw**, one each side. See **Fig.5a-b**. Then reinstall **Existing Roof Screws** on each side and tighten securely. See **Fig.5c-d**.

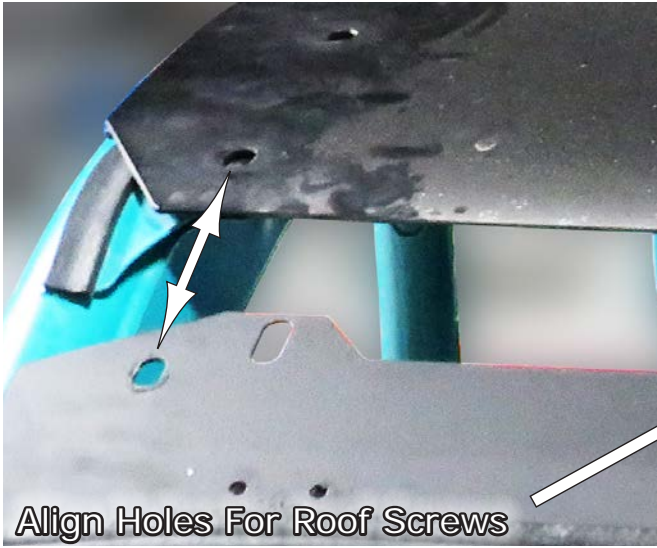


Fig.5a

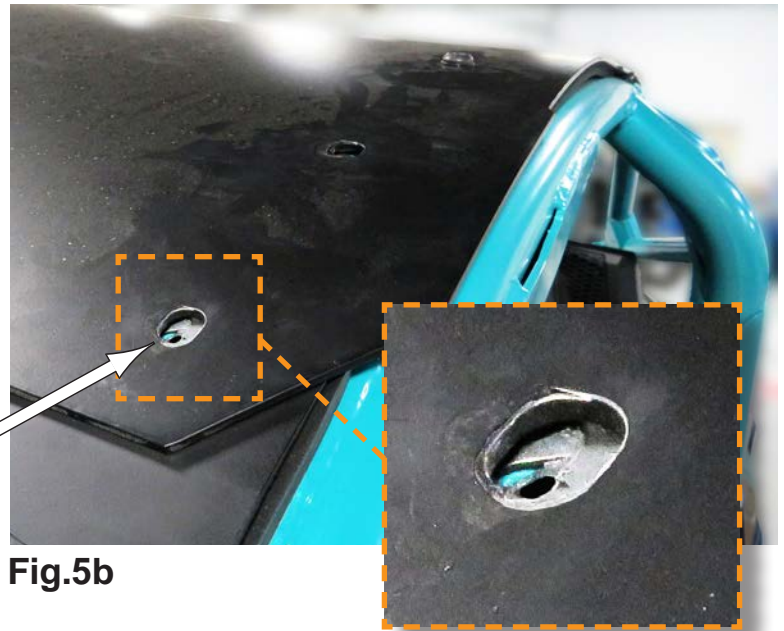


Fig.5b



Fig.5c



Fig.5d



Installing The Aluminum Clamps

NOTE: After you have the top section of the Windshield installed under the roof, you will need to install the Aluminum Clamps onto the machine next. However, follow the next steps on how to help prevent scratching the paint on the bars when installing the clamps onto your machine, if this is a concern to you.

1. Take a piece of the packing material from your kit and cut a section big enough to wrap around the Tube where you will be installing the clamp to. See **Fig.1a-b**. Then Wrap Packing around the Tube Frame, Slide Clamp over the Packing and the Tube, Hold Clamp in place and pull packing out from under clamp. See **Fig.1c-e**.

When Installing The Clamp, It May Tend To Scratch The Paint On Some Machines, Depending



Fig.1a

Cut A Piece Of Packing Material From Your Kit To Wrap Around Tube



Fig.1b

Temporarily Wrap Packing Around Tube Frame



Fig.1c

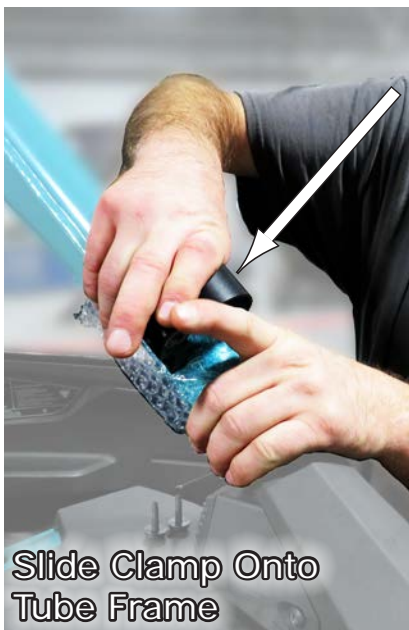


Fig.1d



Fig.1e

6. Once the clamp is on the Tube, then assemble the **Two (2) Screws** and **Screw Cover** as shown in **Fig.6a**. Then repeat for opposite side and adjust Clamps to approximate location on the Tubes as shown, but do not tighten them down. Just slightly snug them to hold in place as you will need to align them to other parts in the coming steps. See **Fig.6b**.

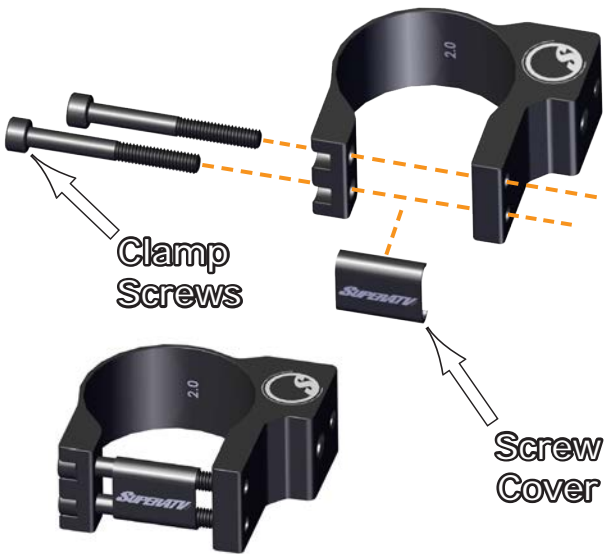


Fig.6a



Fig.6b

7. The next thing you need to do is **Assemble Latch Block Bracket** to the **Windshield Brackets** using the **M8x20 Carriage Bolts** and **M8 Nylock Nuts** all in your kit. Tighten secure. See **Fig.7**.



Fig.7

8. Now, **Mount the Bracket Assembly** onto the **Clamp** you just installed as shown in **Fig.8a-b**. Install this using the **M8x14 Button Head** and **M6x20 Button Head Screws** in your kit. Do not tighten down yet, just lightly snug them until all components are installed in place. Repeat for opposite side.



Fig.8a

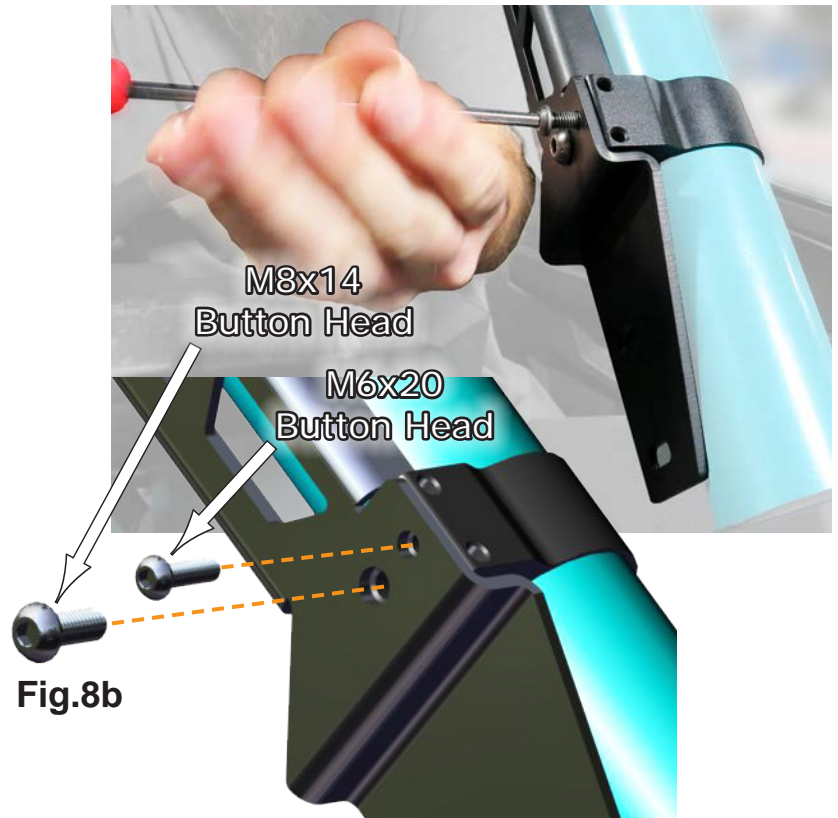


Fig.8b

9. Then **Install the Latch Block** from the **Latch Kit** using the **M6x14 Button Head Screws** from your kit and tighten secure. Repeat for opposite side. See **Fig.9a-c**.



Fig.9a



Fig.9b



Fig.9c

10. Once you have both sides installed with the Bracket Assemblies, yours should look like the one in **Fig.10**, ready for the Windshield.



Fig.10

11. Next, you will **Install the Latch Handles onto the Windshield**. Install using the **M6x14 Button Head Screws** with **Sealing Washers** and **M6 Nylock Nuts**. Position and install as Latches as shown in **Fig.11a-d**. Repeat for opposite side of Windshield.



Fig.11a

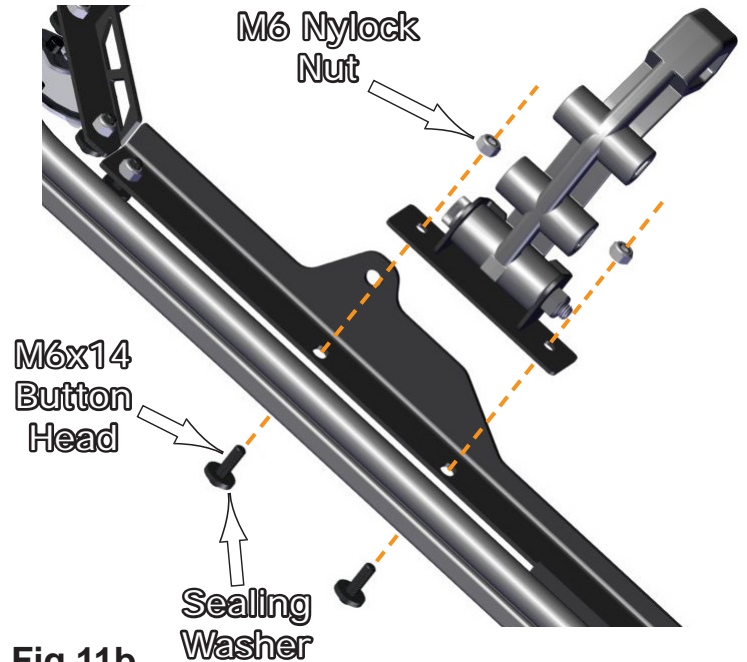


Fig.11b



Fig.11c



Fig.11d

12. Once the Latches are installed, you can now **Set the Windshield up Onto the Machine** and position it with the vehicle. Then **Align the Holes** in the Window Frame Hinges to the holes in the roof. Install to the roof using the **M6x20 Button Head Screws with Sealing Washers and Nylock Nuts**. Repeat for both sides of windshield. See Fig.12a-f.



Set Windshield Onto Vehicle

Fig.12a



Fig.12b



Hinge Installs To Roof Here

Fig.12c



Align Holes Ready For Screws

Fig.12d



Install Using M6x20 Button Head With Sealing Washers & Nylock Nuts

Fig.12e



(view inside vehicle - Driver's Side)

Install Nylock Nuts

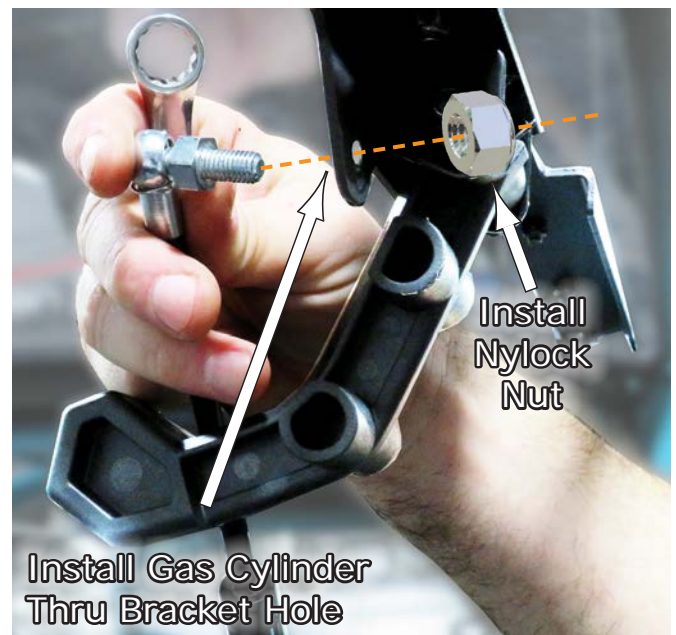
Fig.12f

13. After the Hinges are fixed to the roof, you can now **Install the Gas Cylinders** to the **Windshield**. Insert the **Rod End of the Cylinder** thru the hole in the **Windshield Bracket** and **Install the M8 Nylock Nut** to secure in place. See Fig.13a-d.



Install Rod End Of Gas Cylinder Here

Fig.13a



Install Nylock Nut

Install Gas Cylinder Thru Bracket Hole

Fig.13b



Fig.13b



Fig.13c

14. Then **Connect** the **Other End** of the **Cylinder** to the **Lower Side Bracket** as shown in **Fig.14a**, and install the **Nylock Nut**, and snug secure as shown in **Fig.14b**. Repeat for opposite side. Then tighten all screws and bolts secure.

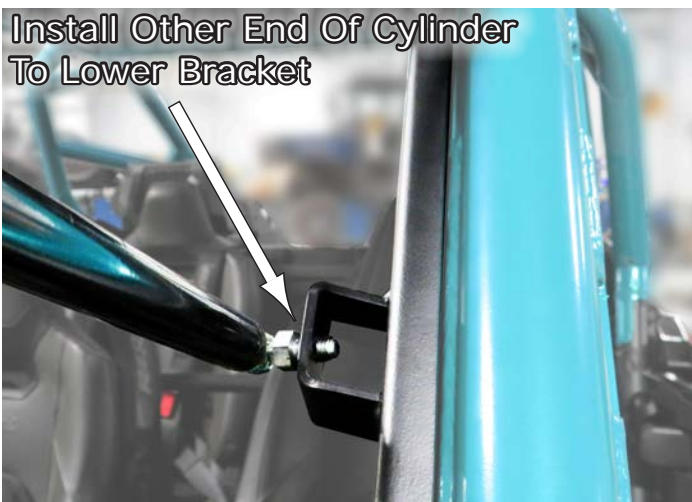


Fig.14a

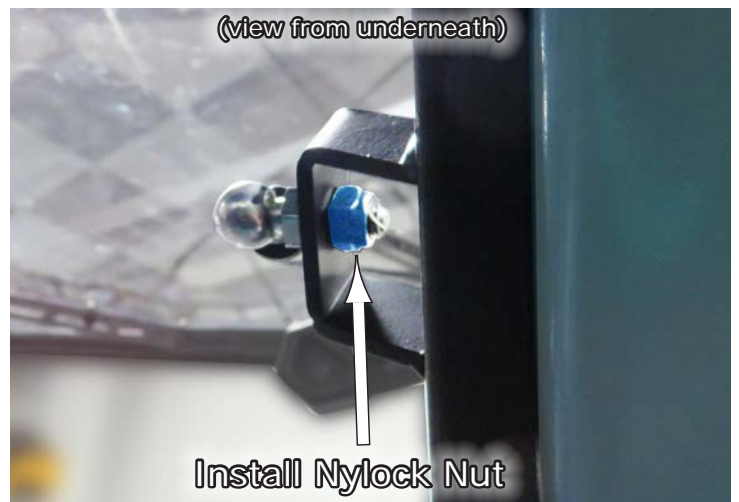


Fig.14b





Liability Statement

SuperATV's® products are designed to best fit user's ATV/UTV under stock conditions. Adding, modifying, or fabricating any factory or aftermarket parts will void any warranty provided by SuperATV® and is not recommended. SuperATV's® products could interfere with other aftermarket accessories. If user has aftermarket products on machine, contact SuperATV® to verify that they will work together.

Although SuperATV® has thousands of satisfied customers, user should be aware that installing lift kits, long travel, or suspension kits, tires, etc. will change the ride of machine and may increase maintenance and part wear. Operating any off-road machine while, or after, consuming alcohol and/or drugs increases risk of bodily harm or death. No warranty or representation is made as to this product's ability to protect user from severe injury or death. SuperATV® urges operators and occupants to wear a helmet and appropriate riding gear at all times.

By purchasing and installing SuperATV® products, user agrees that should damages occur, SuperATV® will not be held responsible for loss of time, use, labor fees, replacement parts, or freight charges. SuperATV®, nor any 3rd party, will not be held responsible for any direct, indirect, incidental, special, or consequential damages that result from any product purchased from SuperATV®. The total liability of seller to user for all damages, losses, and causes of action, if any, shall not exceed the total purchase price paid for the product that gave rise to the claim.

SuperATV® will warranty only parts provided by SuperATV®. Any damage or problems with OEM housings, bearings, seals, or other manufacturers' products will not be covered by SuperATV®. SuperATV® parts and products are not warrantied if item was not installed properly, misused, or modified.

Installing, adding, modifying, or fabricating any factory or aftermarket product to your ATV/UTV may violate certain local, state, and federal laws. Be advised that laws vary depending on town, city, county, state, etc. Use of certain products on public streets, roads, or highways may be in violation law. The Buyer is solely and exclusively legally and personally responsible for any violation of the law by the installation or use of the product. You must abide by all local, state, and federal laws, including but not limited to vehicle safety, traffic laws, and ordinances. It is your responsibility to know the laws and how they apply to you.

The Buyer is responsible to fully understand the capability and limitations of his/her vehicle according to manufacturer specifications, warnings and instructions and agrees to hold SuperATV® harmless from any damage resulting from failure to adhere to such specifications, warnings and/ or instructions. The Buyer is also responsible to obey all applicable federal, state, and local laws and ordinances when operating his/her vehicle while using this product, and the Buyer agrees to hold SuperATV® harmless from any violation thereof.

If you have any problems/questions on this kit, contact us by email at [Superatv.com](mailto:sales@superatv.com).

Need help with your installation?



sales@superatv.com



www.superatv.com



1-855-743-3427



8:00am - 9:00pm EST M-Th
8:00am - 7:00pm EST Friday
9:00am - 2:00pm EST Saturday

*Thank You
For Choosing*



Like SuperATV on Facebook to keep up to date on new products!