

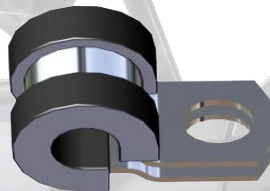
INSTALLATION INSTRUCTIONS

RBG-CF-U10: Rear Bumper Kit

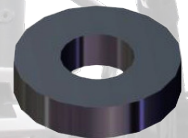
- Ⓢ Please look through and read these instructions BEFORE starting so you understand what processes you'll be doing, and possible extra tools you may need.
- Ⓢ Do Not discard product packaging until installation is complete and functioning properly.



**M8x20
Hex
Flanged
(3pcs)**



**M6
Brake Line
Clip
(1pc)**



**16x5
Black
Zinc Spacer
(1pc)**

1. The first thing you need to do is **Remove the Retaining Push-Pin** from under the tailgate as shown in **Fig.1a-b**. This will allow the bed to move more freely.

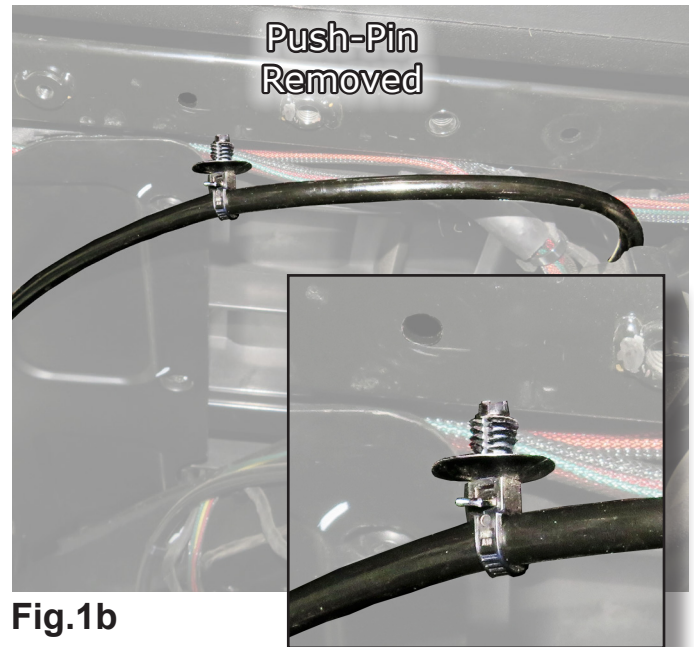
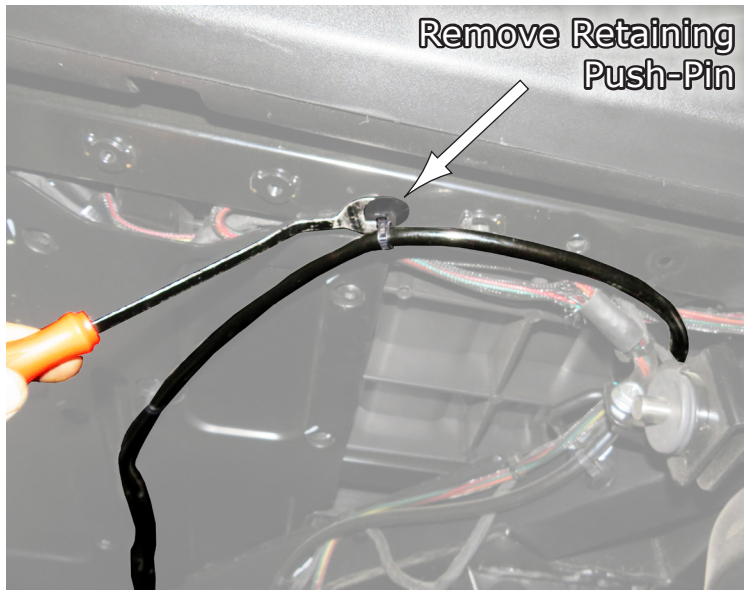


Fig.1a

Fig.1b



2. Then match up the **Three Bumper Brackets** to the mounting holes on the vehicle as shown in **Fig.2a**, Then **Install Bumper** to the machine using the Three (3) **M8x20 Flanged Hex Bolts** provided in your kit as shown in **Fig.2b**. You will only be installing the two end bolts first, but do not tighten bolts down yet, just lightly snug. You will install the middle bolt last. We will reinstall the line you previously removed next.

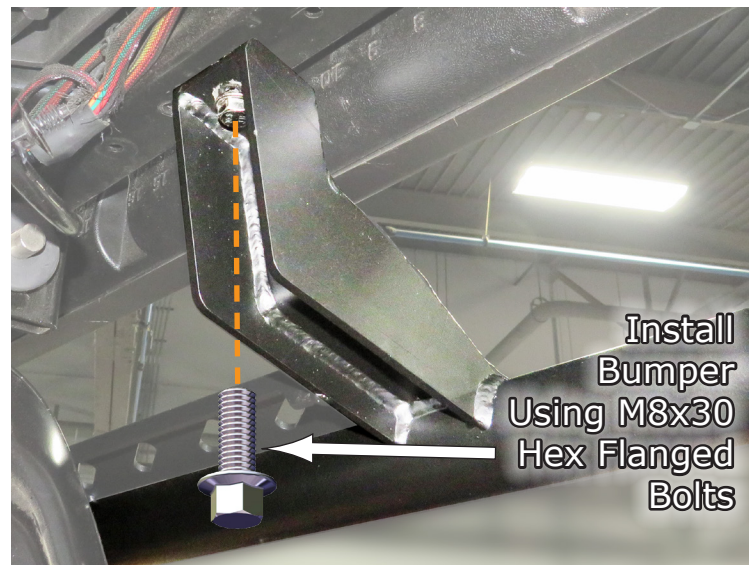
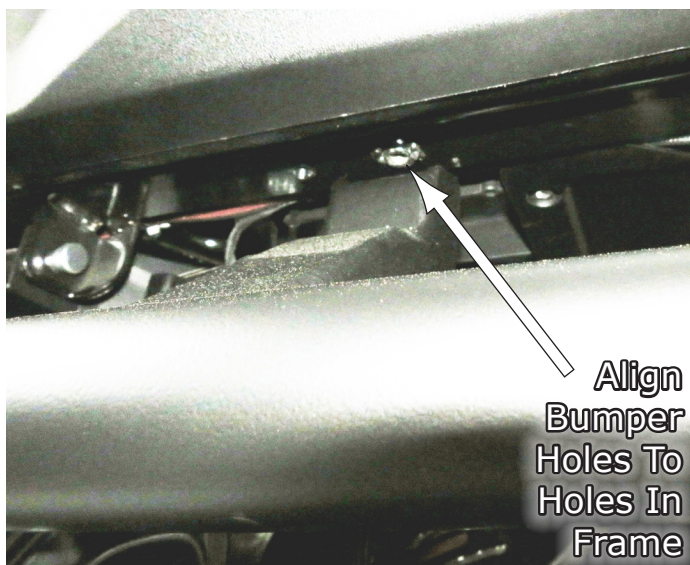
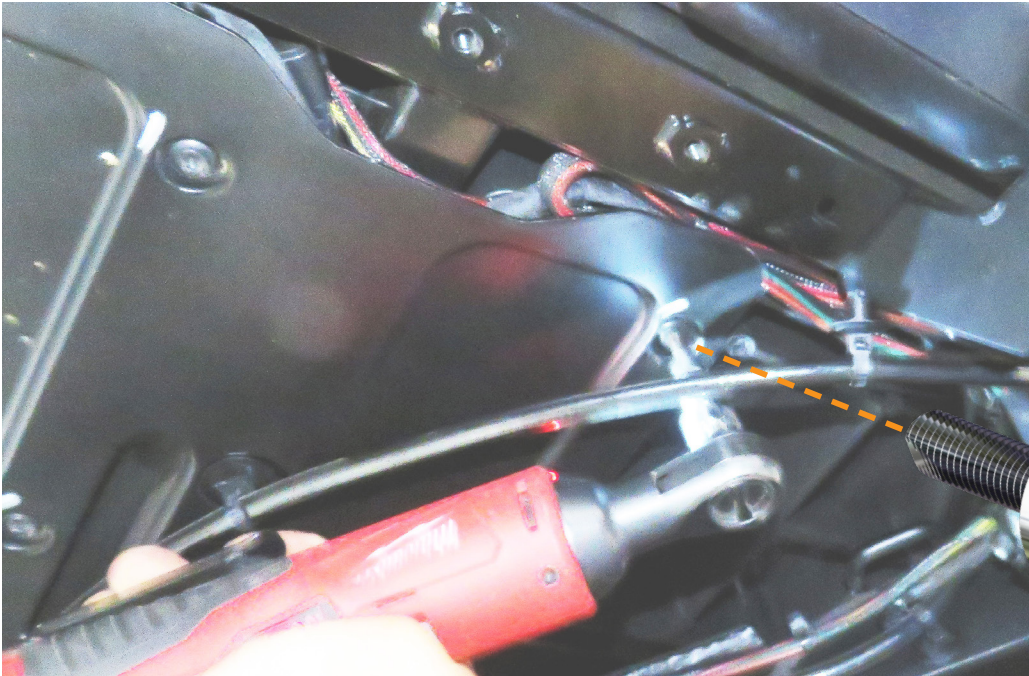


Fig.2a

Fig.2b

3. Now you can reattach the line you previously removed. So first you need to remove one of the **Factory Torx Screws** underneath the bed as shown in **Fig.3a**. Then find the **Brake Line Clamp** and **Spacer** from your kit and **Install the Clamp** using the Torx you just removed along with the **Spacer** also provided in your kit. See **Fig.3b-c**.



Remove Factory Torx Screw In This Location To Attach Clamp With

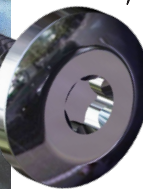


Fig.3a

3. Now you can reattach the line you previously removed. So first you need to remove one of the **Factory Torx Screws** underneath the bed as shown in **Fig.3a**. Then find the **Brake Line Clamp** and **Spacer** from your kit and **Install the Clamp** by wrapping it around the line and using the Torx you just removed along with the **Spacer** also provided in your kit. See **Fig.3b-c**.



Wrap Clamp Around Line With Spacer On Top



Attach Clamp Using Factory Torx Screw

Fig.3b

Fig.3c

4. Next, you can now **Tighten** up the **Center Bolt** of the Bumper. First **Raise** the **Bed** up as you will be tightening the bolt from under there. See **Fig.4a**. Then thread the bolt into the frame as shown in **Fig.4b**. Then tighten it down secure with a wrench or equivalent as shown in **Fig.4c-d**.



Fig.4a

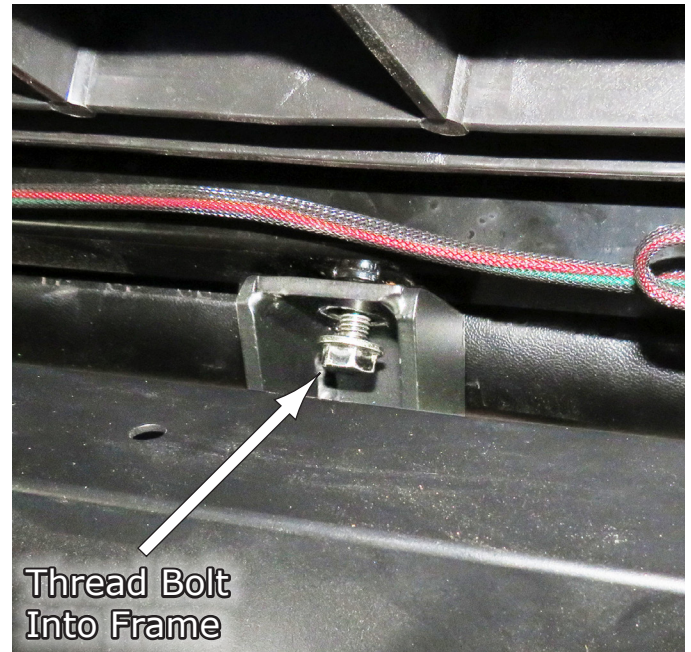


Fig.4b

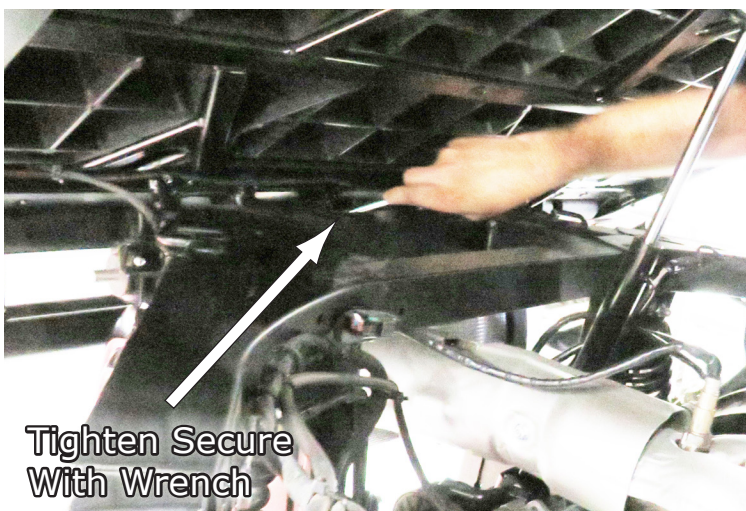


Fig.4c



Fig.4d





Liability Statement

SuperATV's® products are designed to best fit user's ATV/UTV under stock conditions. Adding, modifying, or fabricating any factory or aftermarket parts will void any warranty provided by SuperATV® and is not recommended. SuperATV's® products could interfere with other aftermarket accessories. If user has aftermarket products on machine, contact SuperATV® to verify that they will work together.

Although SuperATV® has thousands of satisfied customers, user should be aware that installing lift kits, long travel, or suspension kits, tires, etc. will change the ride of machine and may increase maintenance and part wear. Operating any off-road machine while, or after, consuming alcohol and/or drugs increases risk of bodily harm or death. No warranty or representation is made as to this product's ability to protect user from severe injury or death. SuperATV® urges operators and occupants to wear a helmet and appropriate riding gear at all times.

By purchasing and installing SuperATV® products, user agrees that should damages occur, SuperATV® will not be held responsible for loss of time, use, labor fees, replacement parts, or freight charges. SuperATV®, nor any 3rd party, will not be held responsible for any direct, indirect, incidental, special, or consequential damages that result from any product purchased from SuperATV®. The total liability of seller to user for all damages, losses, and causes of action, if any, shall not exceed the total purchase price paid for the product that gave rise to the claim.

SuperATV® will warranty only parts provided by SuperATV®. Any damage or problems with OEM housings, bearings, seals, or other manufacturers' products will not be covered by SuperATV®. SuperATV® parts and products are not warranted if item was not installed properly, misused, or modified.

Installing, adding, modifying, or fabricating any factory or aftermarket product to your ATV/UTV may violate certain local, state, and federal laws. Be advised that laws vary depending on town, city, county, state, etc. Use of certain products on public streets, roads, or highways may be in violation law. The Buyer is solely and exclusively legally and personally responsible for any violation of the law by the installation or use of the product. You must abide by all local, state, and federal laws, including but not limited to vehicle safety, traffic laws, and ordinances. It is your responsibility to know the laws and how they apply to you.

The Buyer is responsible to fully understand the capability and limitations of his/her vehicle according to manufacturer specifications, warnings and instructions and agrees to hold SuperATV® harmless from any damage resulting from failure to adhere to such specifications, warnings and/ or instructions. The Buyer is also responsible to obey all applicable federal, state, and local laws and ordinances when operating his/her vehicle while using this product, and the Buyer agrees to hold SuperATV® harmless from any violation thereof.

If you have any problems/questions on this kit, contact us by email at Superatv.com.

Need help with your installation?



sales@superatv.com



www.superatv.com



1-855-743-3427



8:00am - 9:00pm EST M-Th
8:00am - 7:00pm EST Friday
9:00am - 2:00pm EST Saturday

*Thank You
For Choosing*



Like SuperATV on Facebook to keep up to date on new products!