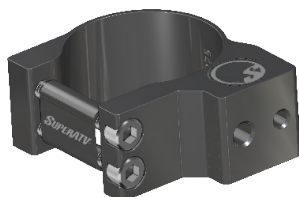


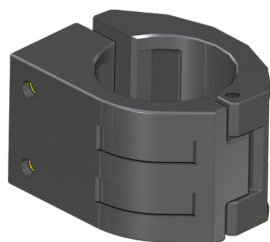
- Do not discard packaging until product has been successfully installed.
- SuperATV does not recommend keeping Roof installed while transporting on an open air trailer. Remove or secure with straps.
- This item is not returnable if the protective film has been removed.
- Test fit to the cage to confirm fitment before removing film.

Rear

Front



Clamp x 4
(remove bolts and Covers)



Tube Clamp x 2

(kit contents continue on following page)

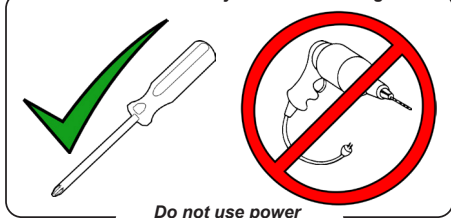
Seal



Flat Seal



Use hand tools only when assembling.



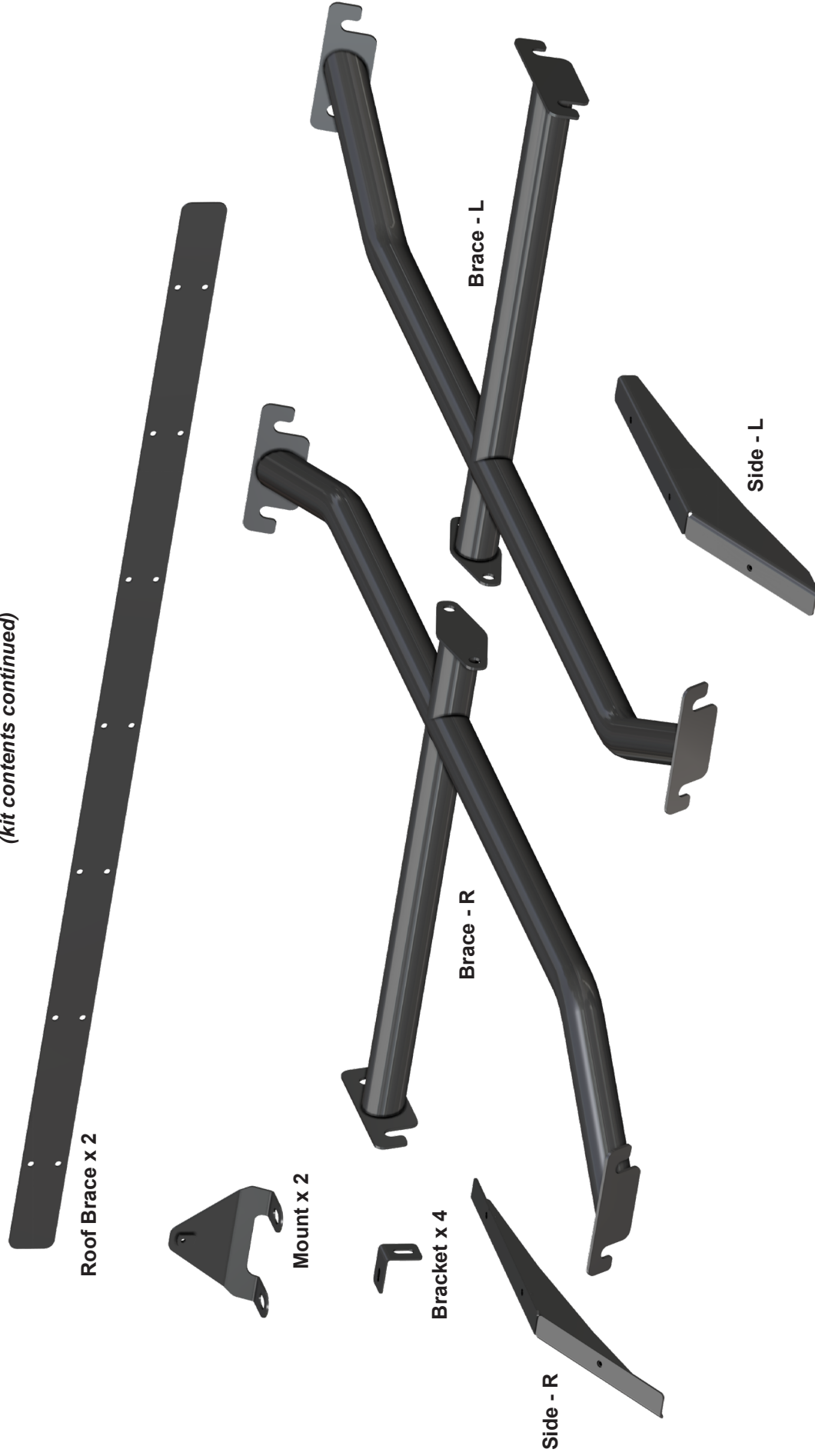
Do not use power

Read instructions and view illustrations before beginning.

Thank You
For Choosing

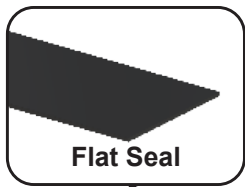
SUPERATV.COM[®]

(kit contents continued)

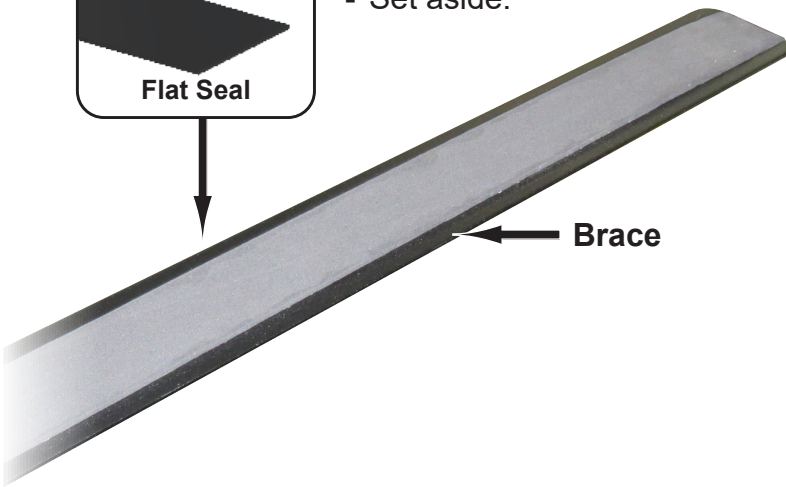


Roof Cleaning:

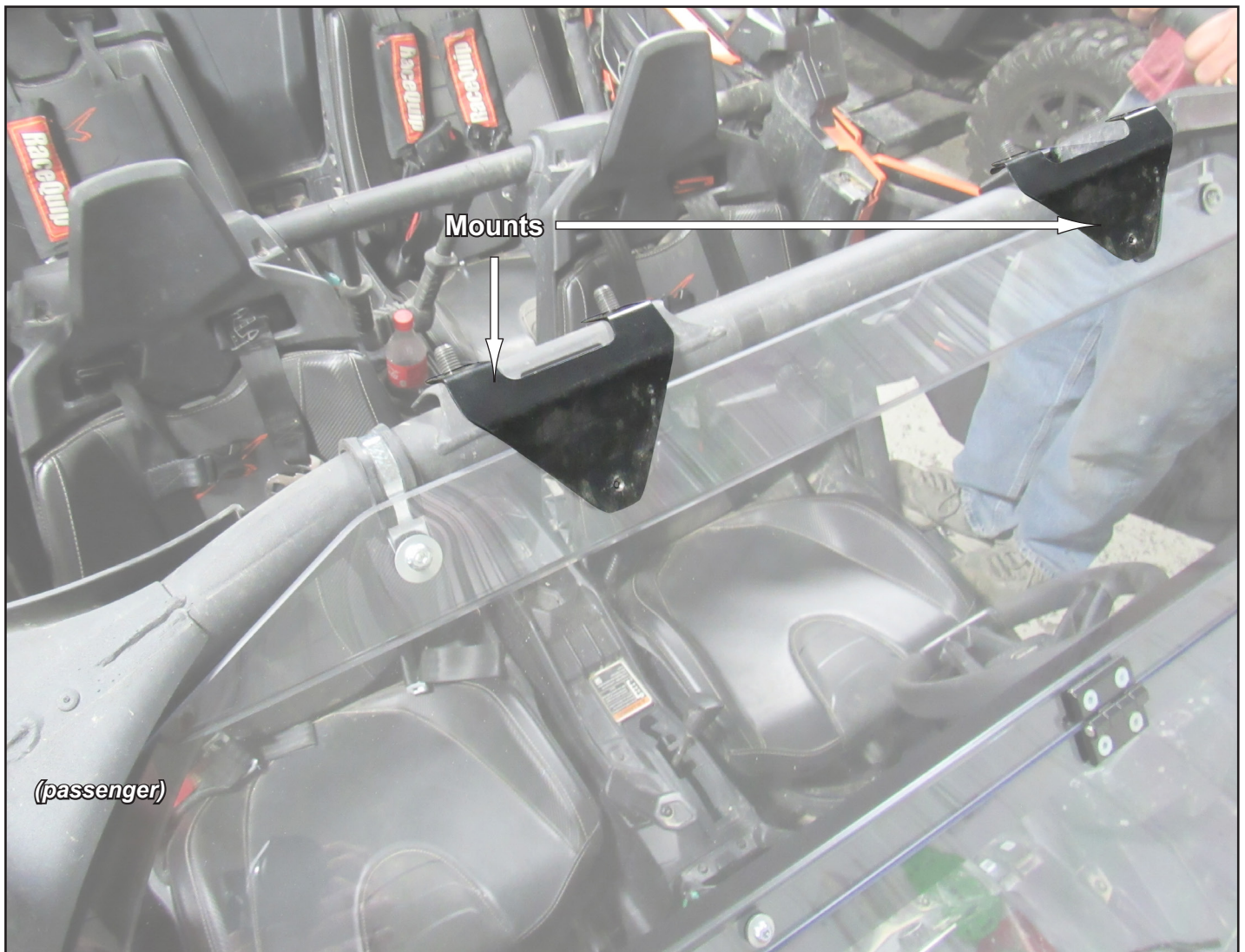
- Do not use Rain-X®, Plexus® or any other protector, wax, or polish.
 - Do not use window cleaning fluids (Windex, 409, etc) or any solvents (gasoline, denatured alcohol, acetone, etc).
 - Never use abrasive cleaners, abrasive pads, or gritty cloths.
1. Thoroughly rinse Roof to float off dirt and mud.
 2. Using a soft cloth, or microfiber cloth, clean Roof with warm water and a gentle detergent. Baby shampoo, rubbing alcohol, or hand washing soap can also be used.
 3. To prevent water spots, use a chamois to blot Roof dry.



- Install Flat Seal to only one side of Brace. Do not install to remaining Brace.
- Set aside.

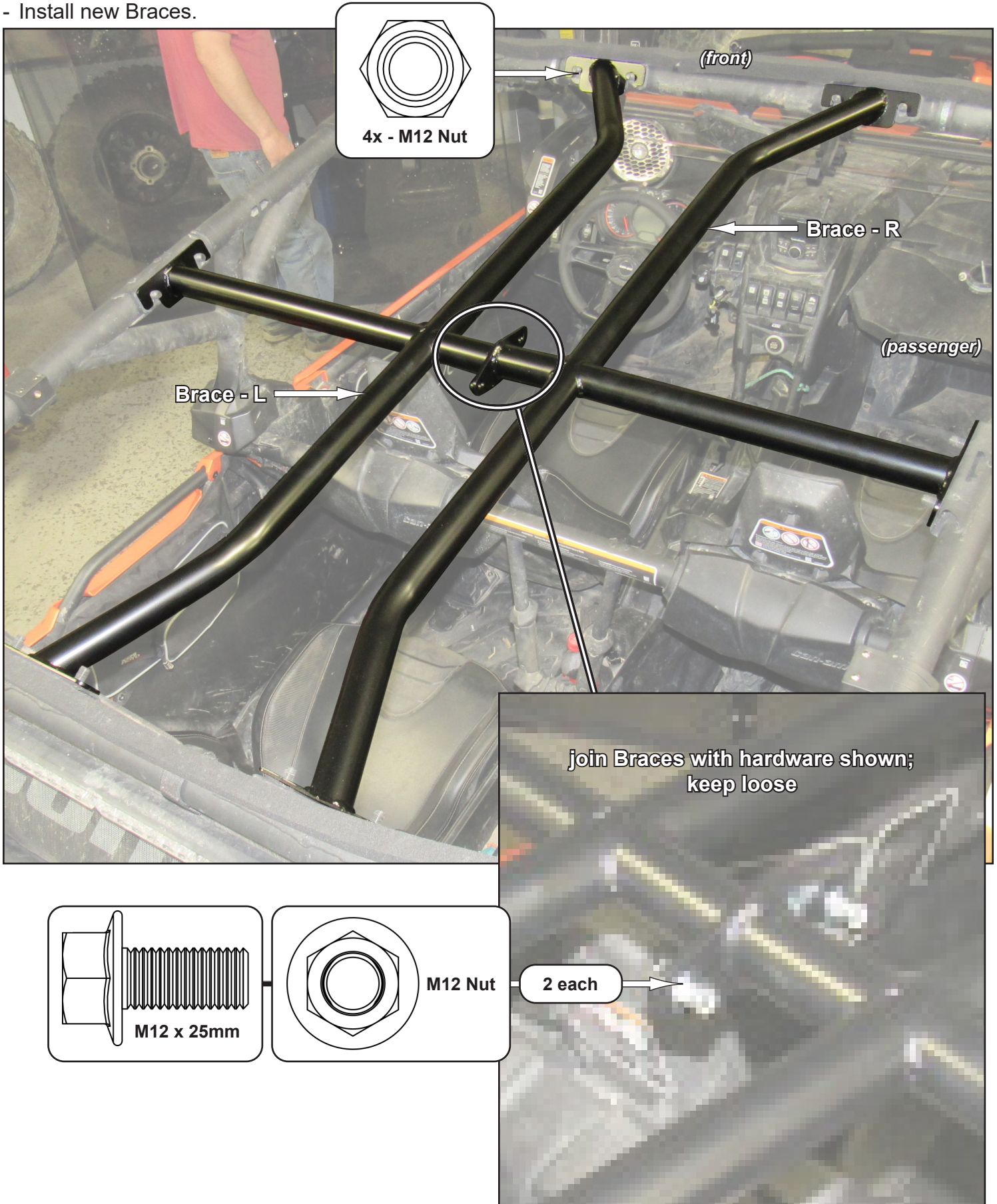


- Remove stock Brace.
- Install Mounts.



do not tighten any hardware completely unless noted

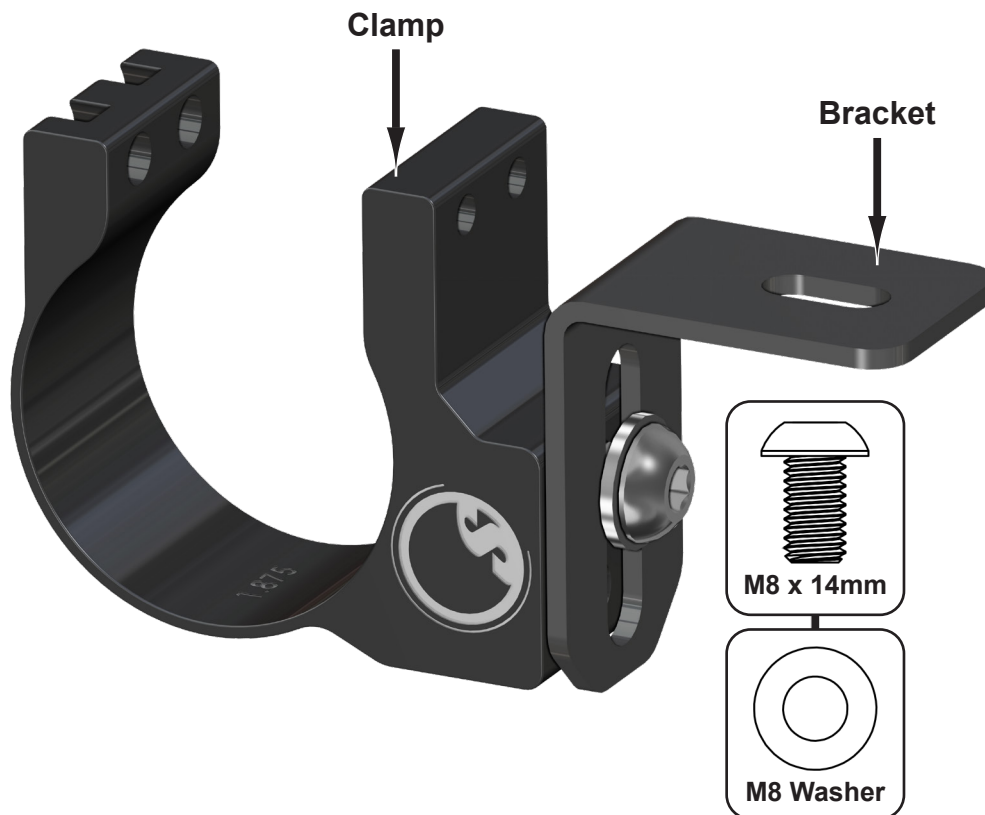
- Install new Braces.



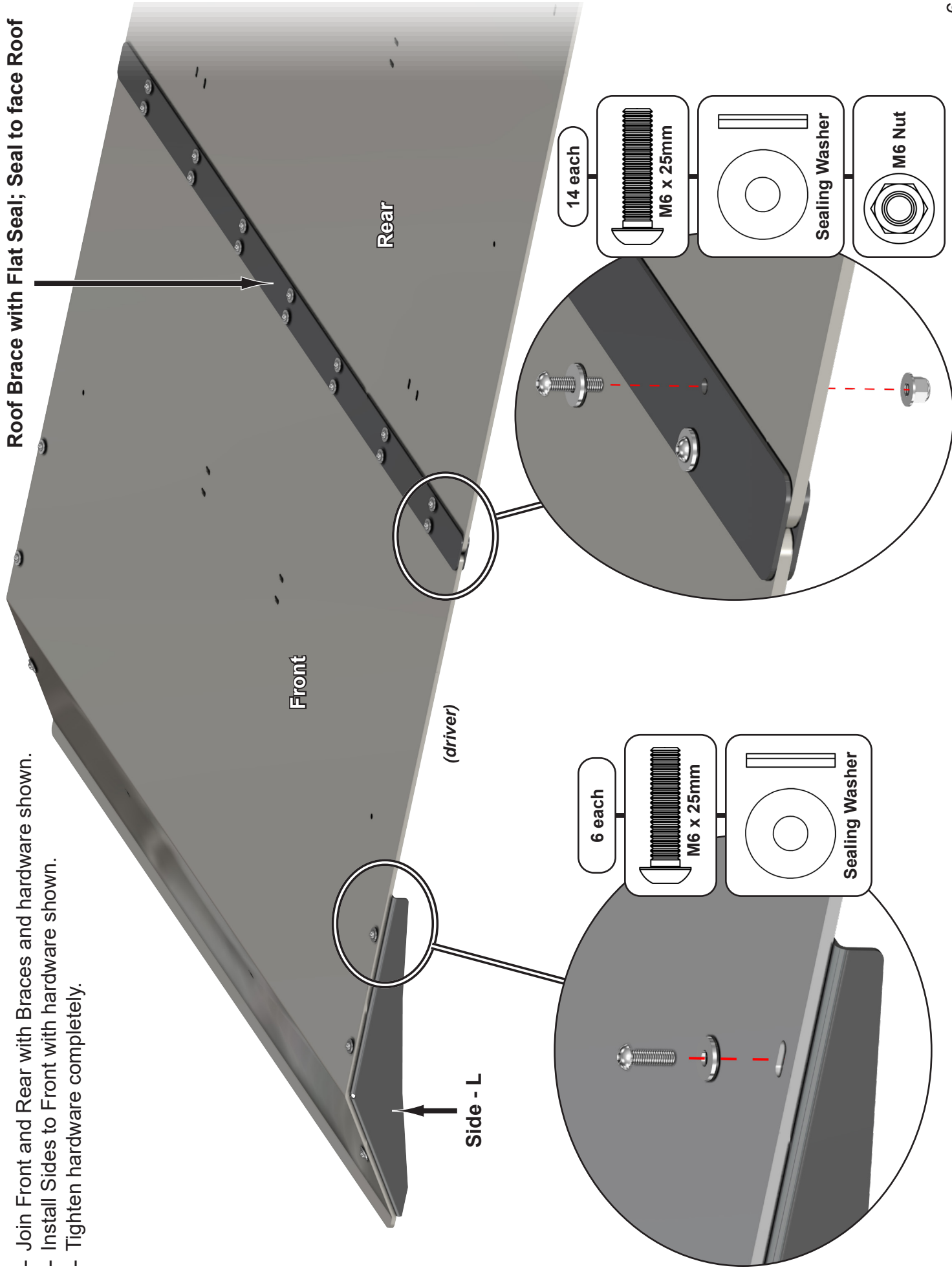


tighten M12 hardware, see page 4, completely

- Install Brackets to Clamps with hardware shown; do not tighten.

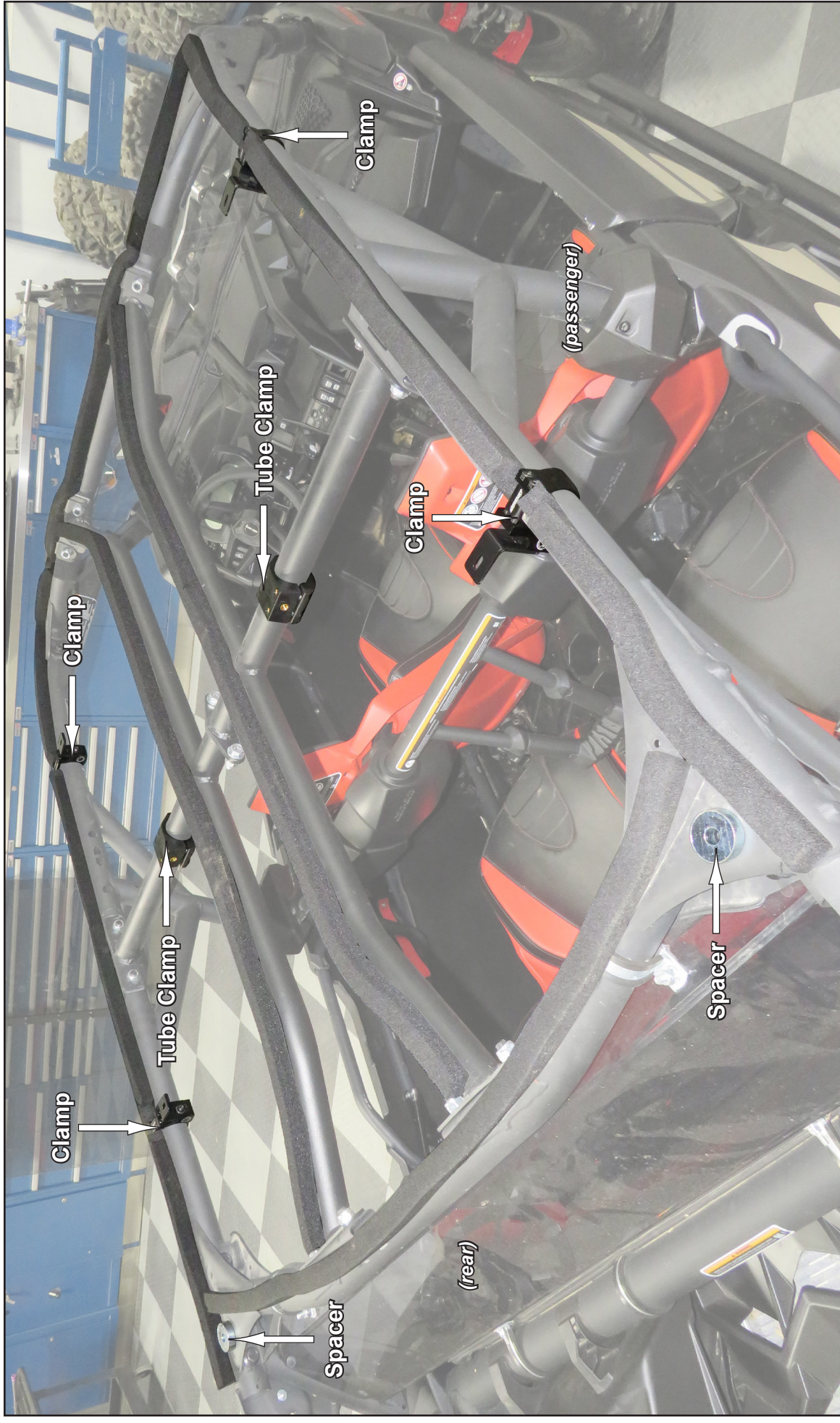


- Join Front and Rear with Braces and hardware shown.
- Install Sides to Front with hardware shown.
- Tighten hardware completely.

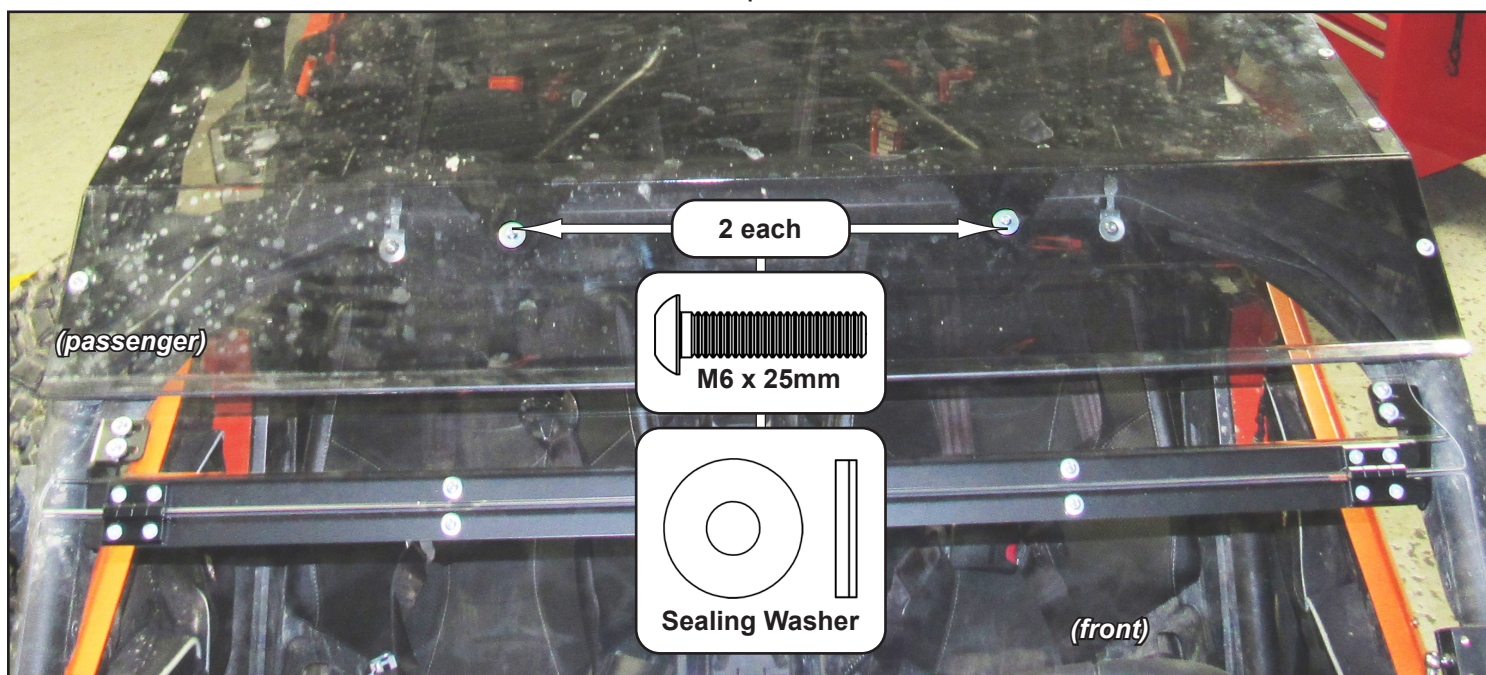


SuperATV highly recommends an extra set of hands for this step

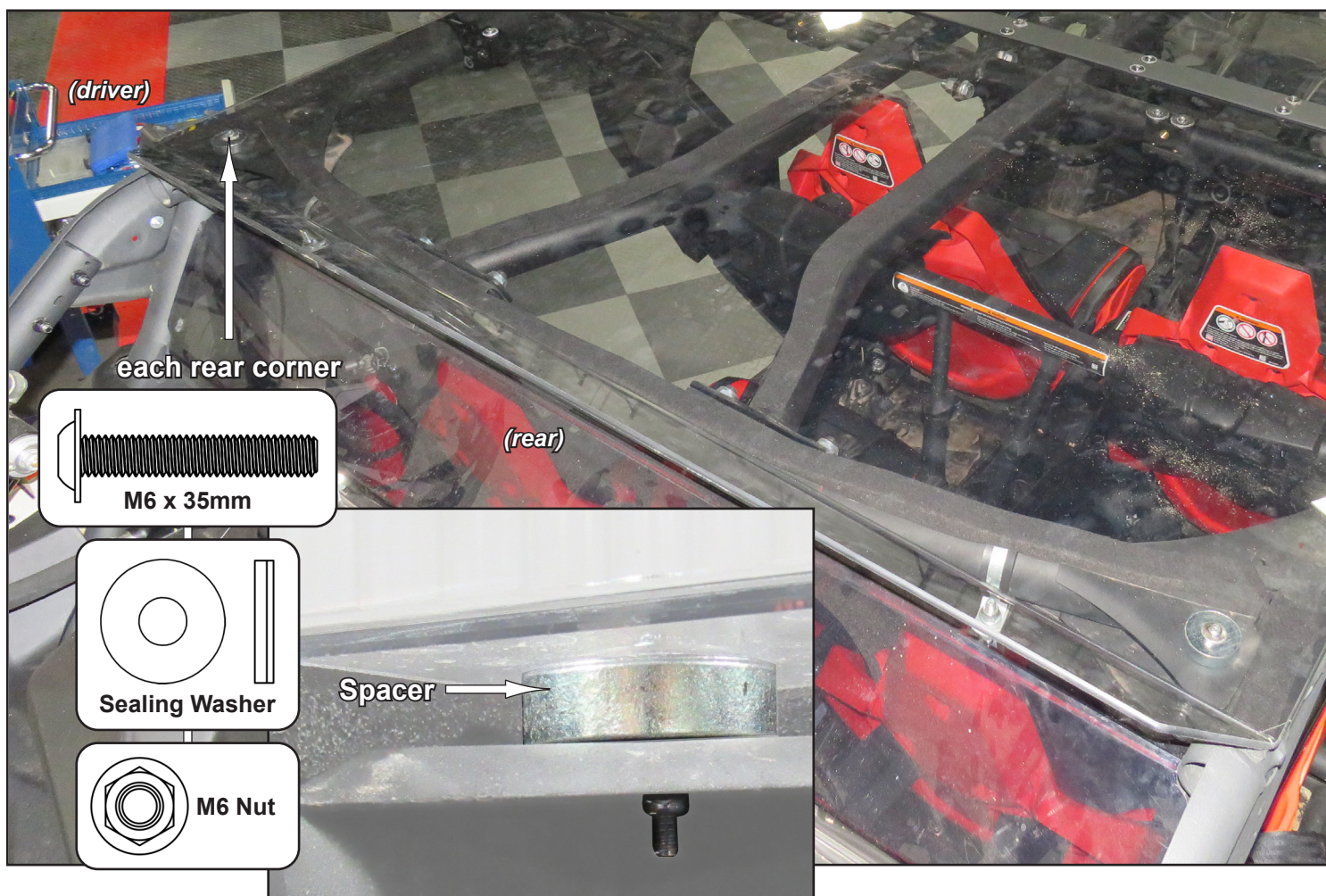
- Place Clamps shown onto Cage in approximate locations shown.
- Place Roof assembly onto machine.
- Align holes in Roof with Clamps, rear holes in Frame, and previously installed Mounts.
- Secure Clamps to Cage and remove Roof assembly.
- Install Seal and Spacers to Cage.



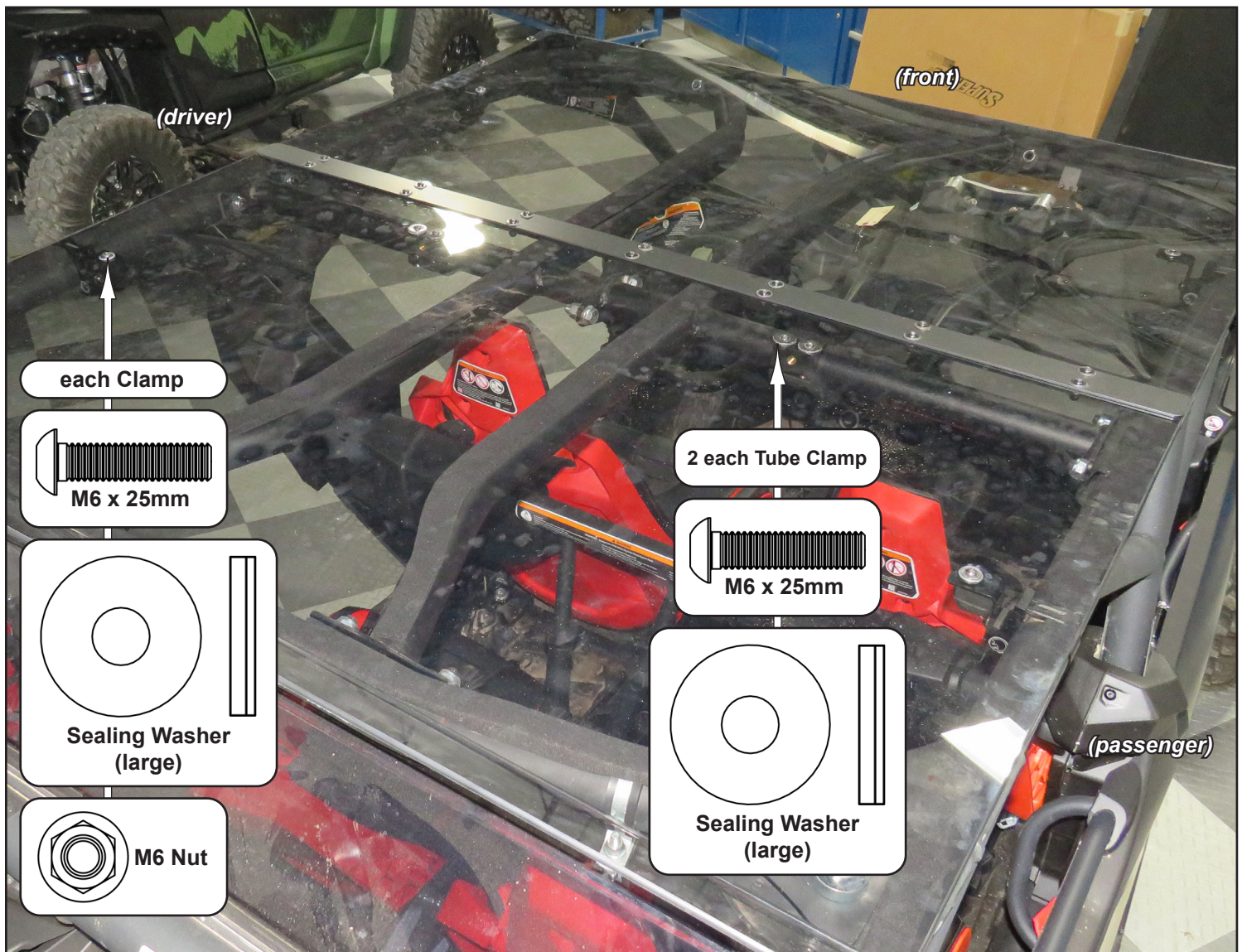
- Place Roof assembly onto Cage.
- Secure Front to Mounts with hardware shown; keep loose.

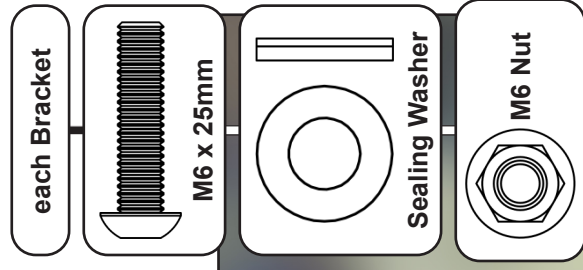


- Secure Rear to Frame with hardware shown.

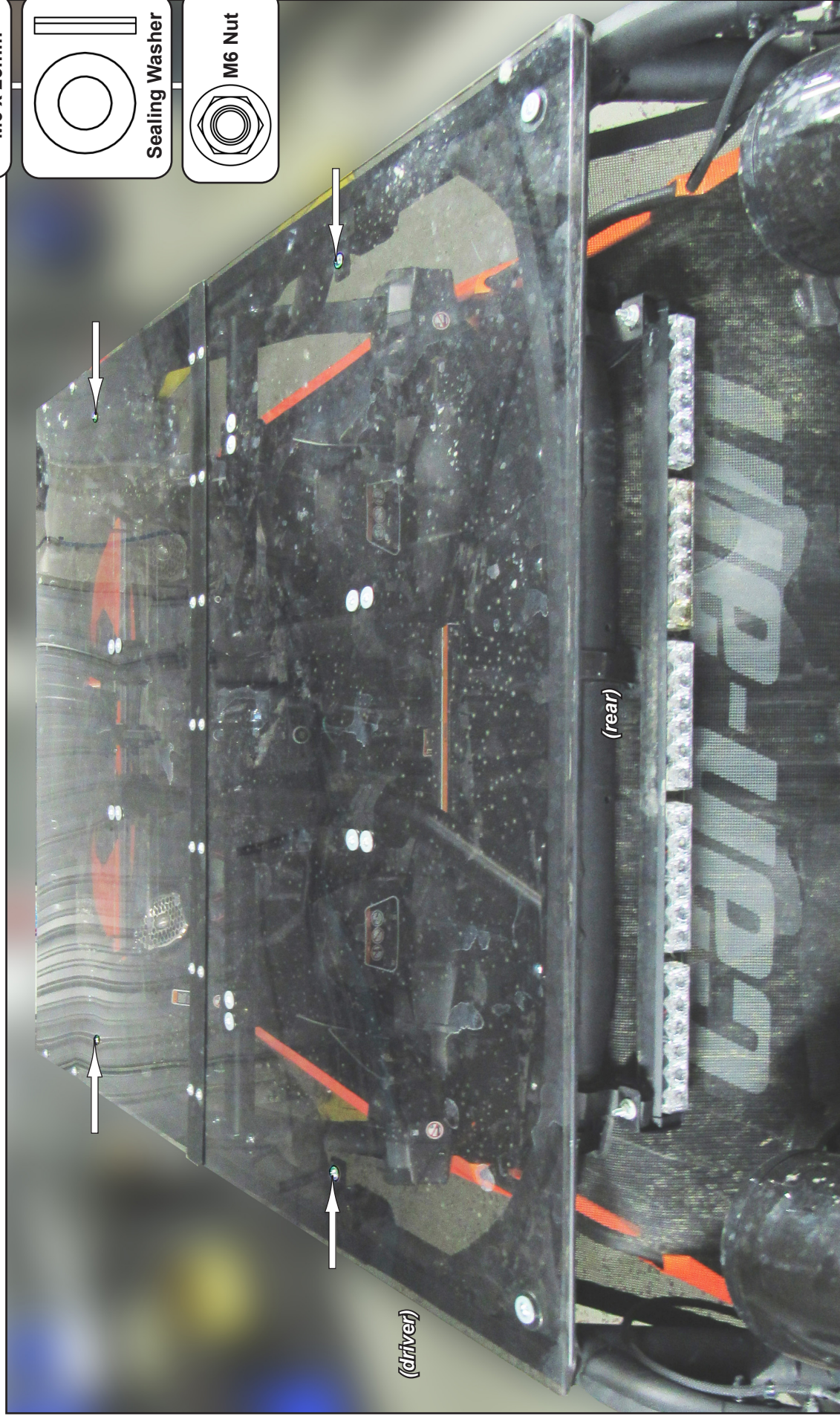


- Secure Roof to Tube Clamps and Brackets with hardware shown; tighten completely.

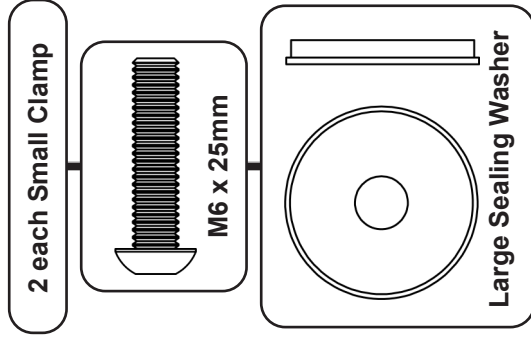
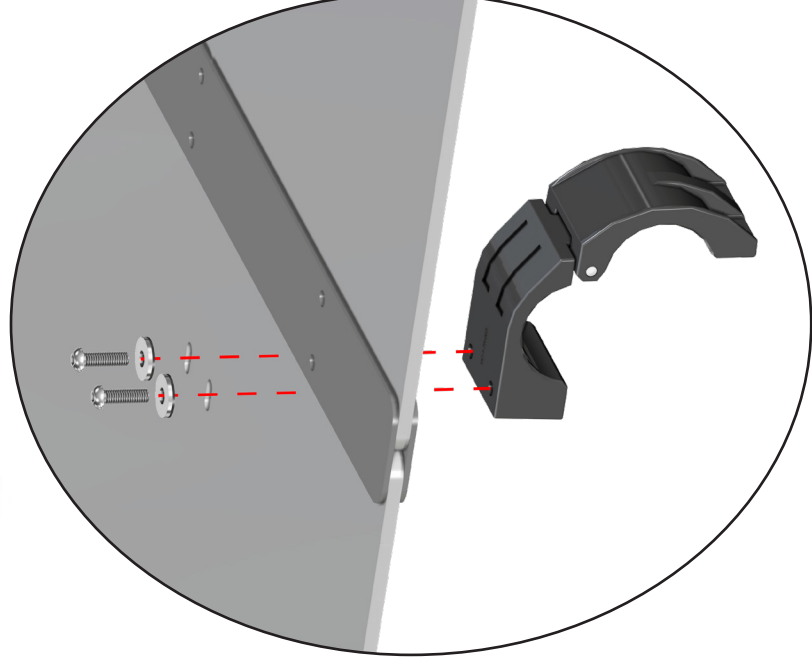




- Secure Roof to Brackets with hardware shown; tighten completely.

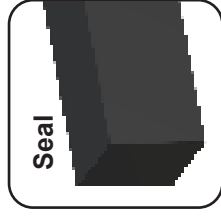
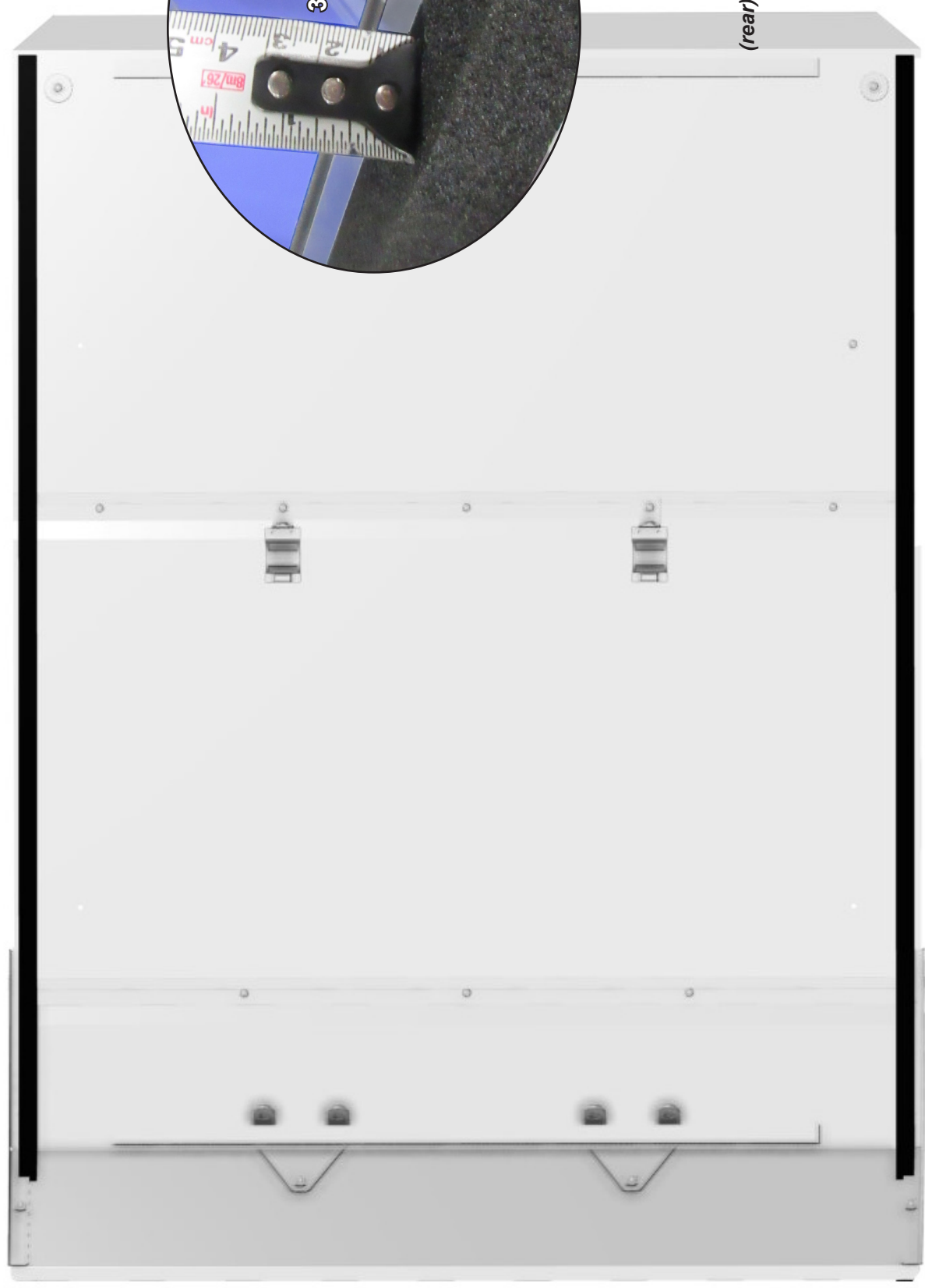


- Install Small Clamps with hardware shown; keep loose.



- Install Seal along inside of Roof in areas shown.

(driver)



▫ Secure Small Clamps



Need help with your installation?



sales@superatv.com



www.superatv.com



1-855-743-3427



8:00am - 8:00pm EST M-Th
8:00am - 7:00pm EST Friday
9:00am - 2:00pm EST Saturday

Liability Statement

SuperATV's® products are designed to best fit user's ATV/UTV under stock conditions. Adding, modifying, or fabricating any factory or aftermarket parts will void any warranty provided by SuperATV® and is not recommended. SuperATV's® products could interfere with other aftermarket accessories. If user has aftermarket products on machine, contact SuperATV® to verify that they will work together.

Although SuperATV® has thousands of satisfied customers, user should be aware that installing lift kits, long travel, or suspension kits, tires, etc. will change the ride of machine and may increase maintenance and part wear. Operating any off-road machine while, or after, consuming alcohol and/or drugs increases risk of bodily harm or death. No warranty or representation is made as to this product's ability to protect user from severe injury or death. SuperATV® urges operators and occupants to wear a helmet and appropriate riding gear at all times.

By purchasing and installing SuperATV® products, user agrees that should damages occur, SuperATV® will not be held responsible for loss of time, use, labor fees, replacement parts, or freight charges. SuperATV®, nor any 3rd party, will not be held responsible for any direct, indirect, incidental, special, or consequential damages that result from any product purchased from SuperATV®. The total liability of seller to user for all damages, losses, and causes of action, if any, shall not exceed the total purchase price paid for the product that gave rise to the claim.

SuperATV® will warranty only parts provided by SuperATV®. Any damage or problems with OEM housings, bearings, seals, or other manufacturers' products will not be covered by SuperATV®. SuperATV® parts and products are not warranted if item was not installed properly, misused, or modified.

Installing, adding, modifying, or fabricating any factory or aftermarket product to your ATV/UTV may violate certain local, state, and federal laws. Be advised that laws vary depending on town, city, county, state, etc. Use of certain products on public streets, roads, or highways may be in violation law. The Buyer is solely and exclusively legally and personally responsible for any violation of the law by the installation or use of the product. You must abide by all local, state, and federal laws, including but not limited to vehicle safety, traffic laws, and ordinances. It is your responsibility to know the laws and how they apply to you.

The Buyer is responsible to fully understand the capability and limitations of his/her vehicle according to manufacturer specifications, warnings and instructions and agrees to hold SuperATV® harmless from any damage resulting from failure to adhere to such specifications, warnings and/ or instructions. The Buyer is also responsible to obey all applicable federal, state, and local laws and ordinances when operating his/her vehicle while using this product, and the Buyer agrees to hold SuperATV® harmless from any violation thereof.

*Thank You
For Choosing*

SUPERATV[®].COM