

# POWER VISION

Installation Guide for: PV3-25-04

Model Coverage:

2018-2021 Can-Am Maverick Trail 800

2018-2021 Can-Am Maverick Trail 1000

2019-2021 Can-Am Maverick Sport 1000

## PARTS LIST



- |   |                 |   |               |
|---|-----------------|---|---------------|
| 1 | POWER VISION    | 2 | VELCRO        |
| 1 | REFLASH HARNESS | 2 | DYNOJET DECAL |
| 1 | USB CABLE       |   |               |

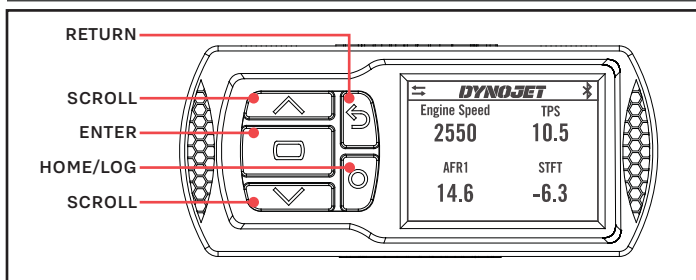
PLEASE READ ALL DIRECTIONS BEFORE STARTING INSTALLATION



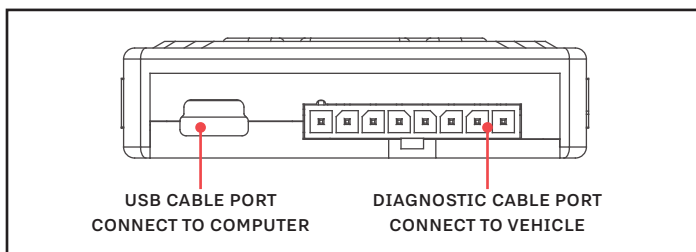
98200115.06



# INTRODUCTION



POWER VISION OVERVIEW—FRONT VIEW



POWER VISION OVERVIEW—SIDE VIEW

Thank you for purchasing the Power Vision from Dynojet Research. At Dynojet, our mission is to make every ride the ultimate ride. The Power Vision allows you to tune your stock ECU to achieve optimal performance from your vehicle.

The Power Vision is the device to interface between your computer and the vehicle ECU. Use the buttons to navigate the device menus, make selections, cycle through the four full-color available gauge screens, and log data. Connect to the diagnostic port to flash a tune; use the USB connection to interface between the Power Vision and your computer.

Make your Power Vision device yours; display the channels you want to see with four user-customizable full-color gauge screens. Make the Power Vision your window into your vehicle; secure the Power Vision to your dashboard or handlebars to monitor any desired set of gauges such as Throttle Position, Engine Speed, and more. Wideband Air:Fuel Ratio and integrated belt temperature can be added as channels to the PV3's monitors by adding the accessories available at [www.dynojet.com](http://www.dynojet.com).

For state of the art technical support, please visit [www.dynojet.zendesk.com](http://www.dynojet.zendesk.com).

## INSTALLING THE POWER VISION



INSTALL POWER VISION



DIAGNOSTIC PORT

- 1 Secure the Power Vision to the vehicle using the supplied Velcro. Make sure the Power Vision will not interfere with the operation and steering of the vehicle. Visit [www.dynojet.com](http://www.dynojet.com) for an array of mounting solutions for your Power Vision.

Note: The Power Vision does not need to be mounted to the vehicle, however, the Power Vision provides a window into your vehicle. Mount the Power Vision to your dashboard and gain access to customizable full-color gauge screens, along with data logging and troubleshooting screens.

- 2 Attach the diagnostic cable to the diagnostic port on the Power Vision and to the diagnostic port on the vehicle. Trail Models: located under the dash to the left of the steering column.

# GETTING STARTED

Use the Tune File Wizard to prepare your Power Vision device with the stock (.stk) and tune (.djt) files needed to flash your vehicle.

- 1 Connect the Power Vision to the vehicle.
- 2 Turn the key on. The Power Vision will scan for files.

There are three possible file states:

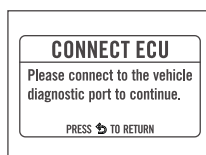
**File State 1:** No compatible tune or stock files.

**File State 2:** No compatible tune files.

**File State 3:** All required files found.

- 3 Gauges are displayed.

Connect the Power Vision to the vehicle diagnostic port to collect ECU information. Turn the key on.



## File State 1:

Go to [tunes.dynojet.com/](https://tunes.dynojet.com/) to download stock and tune files.

### GETTING STARTED

NO COMPATIBLE STOCK FILES

To download tunes, visit:  
[TUNES.DYNOJET.COM/](https://tunes.dynojet.com/)  
PRESS TO SEARCH AGAIN

## File State 2:

Go to [tunes.dynojet.com/](https://tunes.dynojet.com/) to download tune files.

### GETTING STARTED

NO COMPATIBLE TUNE FILES

To download tunes, visit:  
[TUNES.DYNOJET.COM/](https://tunes.dynojet.com/)  
PRESS TO SEARCH AGAIN

## File State 3:

All required files found. The Power Vision is ready to flash a tune to the connected vehicle.

### READY TO FLASH

ALL REQUIRED FILES FOUND

PRESS TO READ ECU  
PRESS TO EXIT WIZARD

# FLASHING YOUR VEHICLE

The Power Vision must be paired to the connected vehicle ECU to function properly.

**Note:** Once paired to the vehicle ECU, the Power Vision will not work on another vehicle without purchasing a tune license.

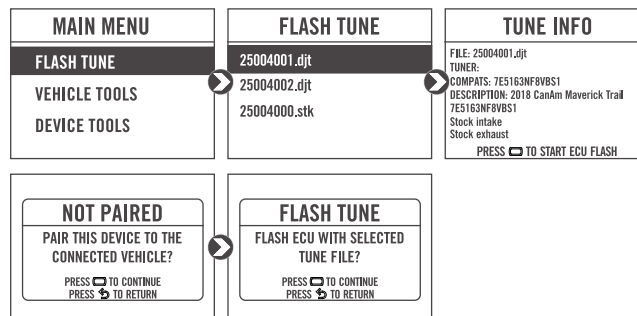
- 1 From the Main Menu, select **Flash Tune**.
- 2 Select the tune file (.djt) and press **Enter** to view the Tune Info.

**Note:** The Dynojet tune file (.djt) is a tune file which is different (better than stock performance or the necessary file when bolting on an exhaust, for example); the stock file (.stk) is the direct duplicate of what the OEM shipped.

- 3 Press **Enter** to accept the tune, or restore the ECU to original stock (.stk) file, and pair the Power Vision to the vehicle.

**Note:** Pair to vehicle will only happen on the first flash.

- 4 Press **Enter** to pair and lock the Power Vision to the ECU and to begin the flash. Do not turn off the key switch or disconnect the Power Vision during the flash.
- 5 After the flash is complete, turn the key off and wait 45 seconds before turning the key back on to start.



# VIEWING THE VEHICLE INFORMATION

This menu allows you to view the device status (paired/not paired), VIN #, Model ID, ECU serial number, tune compat, and checksum compat.

Select **Vehicle Tools>Vehicle Information**.

MAIN MENU	VEHICLE TOOLS	VEHICLE INFO
FLASH TUNE	VEHICLE INFORMATION	PAIRED VEHICLE: DEVICE NOT PAIRED
VEHICLE TOOLS	DIAGNOSTICS	VIN: 3JBVGAWZ4HK000560
DEVICE TOOLS	READ ECU	MODEL ID: 666939
		TUNE COMPAT: 7E5163NF8VBS1
		CSUM COMPAT:

# VIEWING THE DIAGNOSTIC CODES

This menu allows you to read and clear diagnostic trouble codes.

1 To read codes, select **Vehicle Tools>Diagnostics>Active Codes**.

2 To clear codes, select **Vehicle Tools>Diagnostics>Clear Codes**.

MAIN MENU	VEHICLE TOOLS	DIAGNOSTICS
FLASH TUNE	VEHICLE INFORMATION	ACTIVE CODES
VEHICLE TOOLS	DIAGNOSTICS	HISTORIC CODES
DEVICE TOOLS	READ ECU	CLEAR CODES

# RESTORING THE ECU

This menu allows you to restore the ECU. Use Restore ECU if the device does not complete the flash or if your vehicle will not start.

Select **Vehicle Tools>Restore ECU**.

MAIN MENU	VEHICLE TOOLS	RESTORE ECU
FLASH TUNE	READ ECU	RESTORE ECU TO ORIGINAL STK FILE?
VEHICLE TOOLS	DELETE DATA LOG	PRESS <b>2</b> TO CONTINUE
DEVICE TOOLS	RESTORE ECU	PRESS <b>5</b> TO RETURN

# CONFIGURING GAUGES

Make your Power Vision device yours; display the channels you want to see with four user-customizable full-color gauge screens. Each gauge screen has four configurable channels. Monitor channels such as Wideband, AFR, Boost, and integrated belt temperature sensor. Sample gauges shown here; for a complete list of monitors available, open the tune file in Power Core or scroll through the gauges on the device when configuring or selecting channels for the list of options.

1 From the Main Menu, select **Device Tools>Configure Gauges**.

2 Select a gauge screen and press **Enter**.

3 Select a channel and press **Enter**.

4 Select a channel from the list and press **Enter**.

5 Select the precision or units for that channel and press **Enter**.

6 Continue setting up the remaining channels as desired.

7 Continue configuring the remaining gauge screens as desired.

MAIN MENU	DEVICE TOOLS	CONFIGURE GAUGES
FLASH TUNE	CONFIGURE GAUGES	SCREEN 1
VEHICLE TOOLS	DEVICE INFORMATION	SCREEN 2
DEVICE TOOLS	REFORMAT DISK	SCREEN 3
		SCREEN 4

CONFIGURE SCREEN	SELECT UNIT	SELECT PRECISION
CHANNEL 1	RPM	0
CHANNEL 2	RPMx10	0.0
CHANNEL 3	RPMx100	0.00
CHANNEL 4	RPMx1000	0.000

<b>DYNOJET</b>	<b>DYNOJET</b>	<b>DYNOJET</b>
Engine Speed	TPS	Voltage
6550	37.9	13.8
Load Req	STFT	ECT
51	0.1	174.5
Pedal Pos	AFR1	IAT
65.2	13.6	81
TPS	Req AFR	EGT
39.1	13.8	1050

# LOGGING DATA

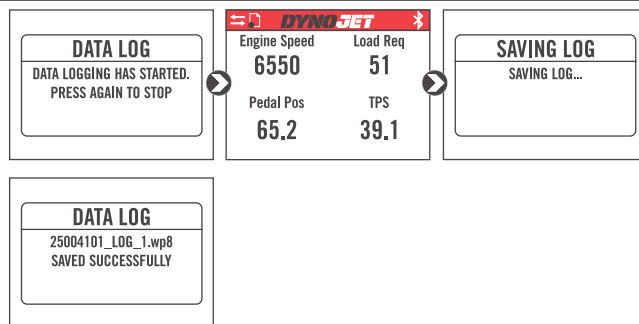
The Power Vision is a powerful logging tool to diagnose running issues. Use the Power Vision to log all vehicle operating data and review the data in the Power Core software. Troubleshoot an issue such as knock, speed/RPM limitation, throttle blade closure and more by keeping the Power Vision mounted to view and record channels.

1 Press the **Log** button to begin logging. The Power Vision screen will illuminate a bright red banner across the top when logging.

2 Press the **Log** button again to stop logging.

3 Use the Power Core software to view log files.

**Snapshot Log:** Press and hold the **Log** button for two seconds to record the previous two minutes of operating time.

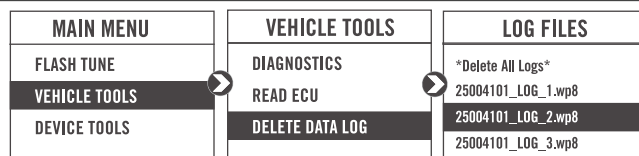


# DELETING DATA LOGS

This menu allows you to delete data logs.

1 Select **Vehicle Tools>Delete Data Log**.

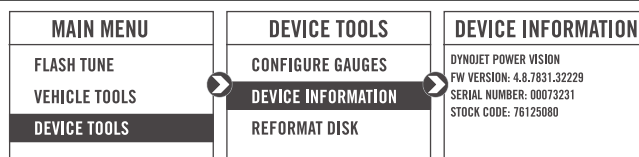
2 Select a specific log to delete or select **\*Delete All Logs\***.



# VIEWING THE DEVICE INFORMATION

This menu allows you to view the device firmware version, serial number, and stock code.

Select **Device Tools>Device Information**.



# REFORMATTING THE DISK

This menu allows you to reformat the disk and erase all data.

Select **Device Tools>Reformat Disk**.

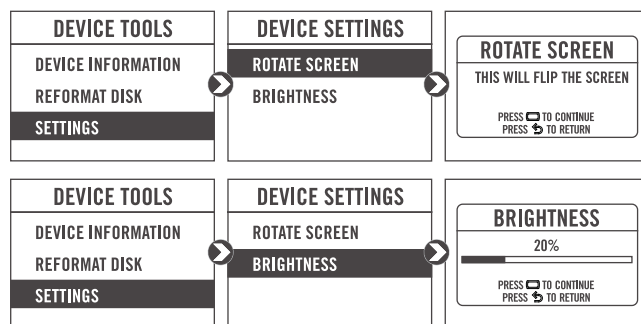


# CHANGING THE SETTINGS

This menu allows you to rotate the screen allowing you to change the orientation of the Power Vision device along with adjusting the screen brightness. Turn the brightness up and make your screen pop!

Select **Device Tools>Settings>Rotate Screen** to flip the screen.

Select **Device Tools>Settings>Brightness** to change the screen brightness.



# UPDATING THE DEVICE

This menu allows you to update the device with the latest firmware.

- 1 Go to [www.dynojet.com](http://www.dynojet.com).
- 2 From the top navigation menu, select **Support>Downloads**.
- 3 Click **Power Vision 3**.
- 4 Click the **Firmware** drop-down and download the Power Vision 3 Firmware for CanAm.
- 5 Save the file to your device.
- 6 Select **Device Tools>Update Device**.



# EXPORT DIAGNOSTICS

This menu allows you to create a BIN file containing device information used by Dynojet Tech Support.

- 1 Select **Device Tools>Export Diagnostics**.
- 2 If requested by Dynojet Tech Support, connect your Power Vision to a computer and email the BIN file to [PV3tech@dynojet.com](mailto:PV3tech@dynojet.com).



# USING THE POWER VISION UPDATE CLIENT

This stand alone application will launch the Update Client allowing you to update your Power Vision with the latest firmware, retrieve additional tunes, or restore the Power Vision to the original Dynojet factory settings.

- 1 Connect the Power Vision to your computer using the included USB cable.
- 2 Navigate to the POWERVISION drive attached to your computer and run the **Update.exe** file.
- 3 Click **Update** to load the current firmware. If the Update button is grayed out, your Power Vision already has the latest firmware.
- 4 Click **Restore** to reload all original Dynojet tune and stock files.
- 5 Click **Get Tunes** to open the Dynojet Tune Finder. Follow the instructions to Upload your PV\_Info.txt file and retrieve new tunes.
- 6 Click **Manual Firmware Update** to navigate to and load a version of firmware already saved on your computer.

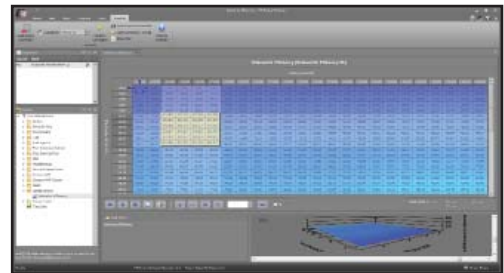


# INSTALLING THE POWER CORE SOFTWARE

Download the Power Core software and take tuning to a whole new level.

**Note:** Downloading the Power Core software is optional and not necessary to use the Power Vision.

- 1 Go to [www.dynojet.com](http://www.dynojet.com).
- 2 From the top navigation menu, select **Support>Downloads**.
- 3 Click **Power Vision 3**.
- 4 Click the **Software** drop-down and download the Dynojet Power Core software.
- 5 Double-click the saved file to begin installation. Follow the on-screen prompts. Refer to the Power Core Help for more information.





**PUSH  
THE  
LIMIT**

**2191 MENDENHALL DRIVE, NORTH LAS VEGAS, NV 89081 - 800-992-4993 - [DYNOJET.COM](https://www.dynojet.com)**

**© 2019-2022 DYNOJET RESEARCH ALL RIGHTS RESERVED**