

# Polaris RZR XPT, XP1000, Turbo S Aux Fuel Tank

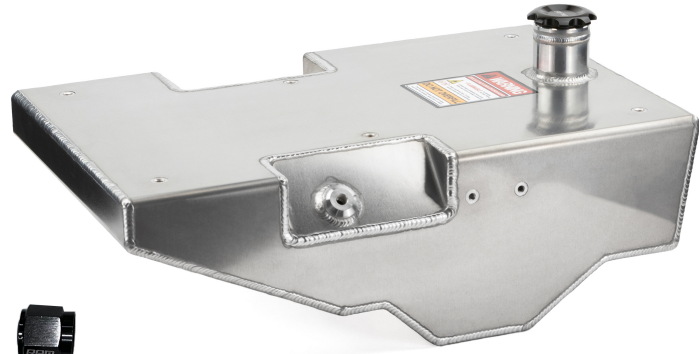


## Notes:

*Installation should be double checked after first use for any loose bolts or leaks. Proper installation is key to a successful installation. If you do not feel safe with the installation or the work you performed, we highly suggest having a UTV or performance shop install the kit. If you ever smell gasoline, immediately stop use of the machine and fuel system, and locate and resolve the issue.*

**With a RPM fuel tank in place, a passenger should never occupy or sit in the seat above the tank.**

**Note:** When fueling, stop the filling at the last bar on the gauge to avoid overfilling the factory tank.  
\*\*Spare 6AN Female cap is only used if you remove the system from the vehicle to cap the bulkhead fitting on the fill neck.



## Install Instructions:

### Wiring

The wiring is straight forward. You will run it through the center console, free of any moving items such as the driveshaft and shift mechanism. Use zip ties to secure the harness. The plug will plug into the factory bus bar. It is keyed 12v power meaning the pump will only work with the key on. The switch is a momentary switch which means you will have to push and hold the switch to transfer fuel. Never run the harness anywhere that puts strain on it or pinches the wiring in any way. Our kit comes pre-wired for the factory Polaris Bus Bar. If you do not have a factory Bus Bar on your machine, simply wire the red to 12V keyed power and black to ground.



## TANK INSTALLATION

It is important that during assembly the working area is clean and free of debris. It is especially important that the rear floorboards where the tank will be resting is clean. It's best to open and lay all parts out in a clean work area before starting this installation.

**DRIVERS SIDE TANK HARDWARE**



**PASSENGER SIDE TANK HARDWARE**



With the fuel tank on a clean working surface, you will assemble the fuel pump and hoses off the pump to the tank before installing the tank into the car.

Instruction on the setting up the fuel pump and attaching it to the tank can be found here at this video link: <https://www.youtube.com/watch?v=kQ74IIHV7xk>

Refer back to this Instruction Sheet for bulkhead fitting install when instructed from video.

### **INSTALLING THE STAINLESS STEEL BULKHEAD FITTING**

There is a plastic elbow that covers the fill neck of the gas tank on the right side of the passenger seat area. This elbow needs to be cut and removed. You will cut it flush to the bottom. This needs to be done carefully so that the fill neck itself is not damaged. An oscillating tooling is best, a hot knife can be used also. Carefully and slowly cut.

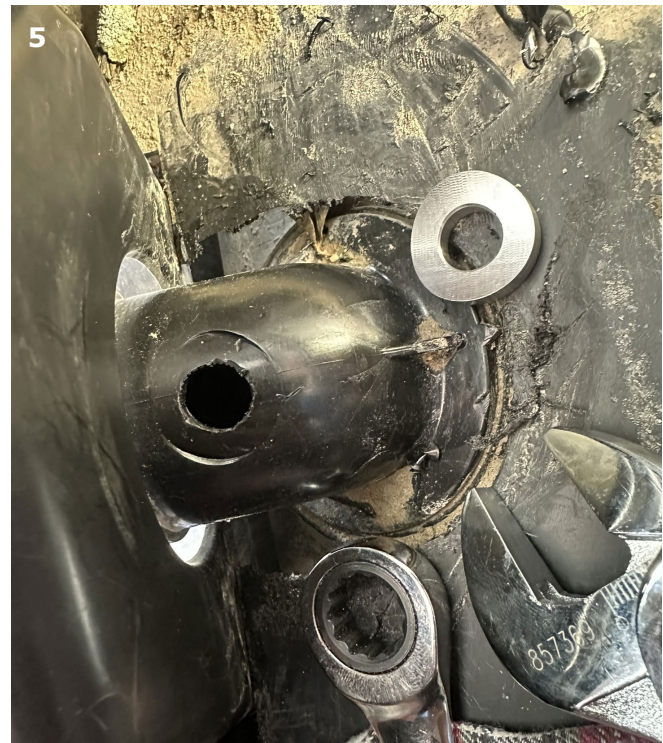
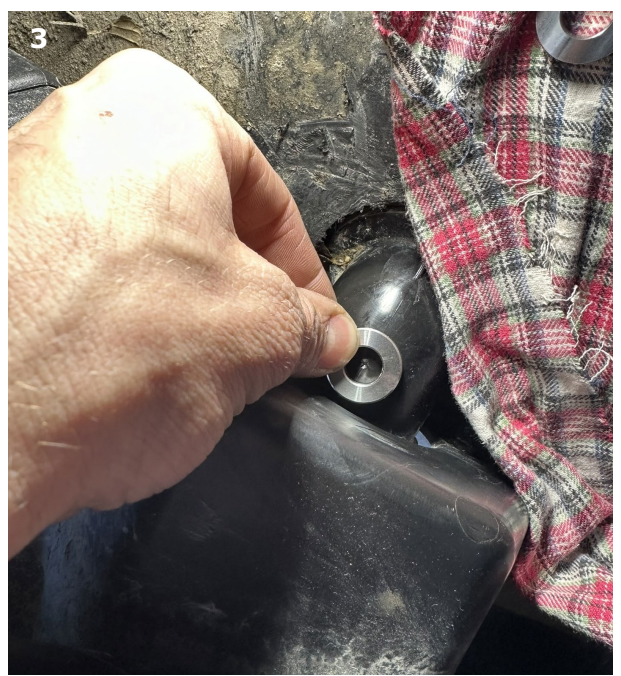
**Cut along the orange line**



Using the outer curved washer, mark the center of the hole as pictured in image 3.

Remove the gas cap and stuff a rag into the fill neck to catch any debris as picture in image 4

Using a 1/2" drill bit, drill the hole slowly.



Apply Loctite to the threads & install the fitting. Be sure that the curvatures of the outside and inside washers remain in line with the curvature of the fill neck. The pressure of the stainless washer will seal the unit. **Over tightening can result in splitting the plastic resulting in needing the gas tank replaced!** Once tight, align the nut with a pin hole and insert the Cotter Pin and bend both ends to secure.

