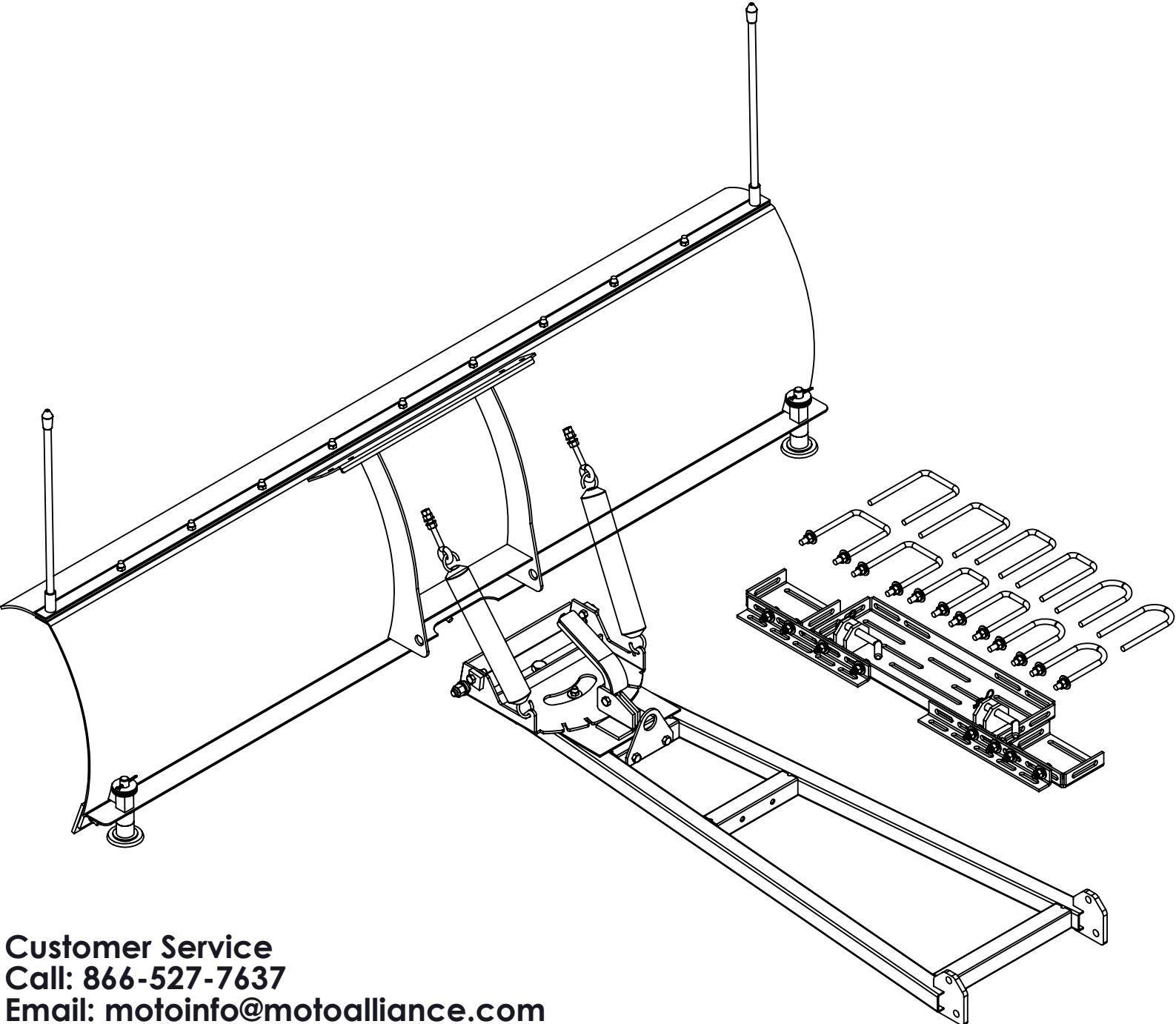




Denali Plows - by Motoalliance

Description	Item #	UPC
72" Denali Universal Plow System	UP72STBK	810541027509



Customer Service
Call: 866-527-7637
Email: motoinfo@motoalliance.com

- Please read and understand all assembly instructions, notices and warnings before assembling and operating your plow system. Follow these guidelines to ensure satisfactory operation:**
- Read this manual and your UTV operators manual before use.
 - Periodically check for wear and tightness of all fasteners. Replace or re-torque fasteners as necessary.
 - Before first use, set plow in the furthest right or left angled position to check for clearance between the plow and front tires.
 - Operate with extreme caution on slopes and rough terrain. Be familiar with the area before you plow.
 - Be aware of immovable objects that could be hidden in the area you are plowing.
 - To avoid damage when pushing snow into a pile, reverse direction before raising the plow blade.
 - Do not ram the plow blade into piles of snow.
 - For best results, set the suspension preload of your UTV to the stiffest setting.
 - To reduce steering effort and increase mobility, set the air pressure of your tires to the maximum pressure specification.
 - The plow blade assembly is designed to “trip” when it strikes an object or digs in too far. When pressure is released, the plow springs back into position. Spring tension can be increased by tightening the hexnuts on the top of the eyebolts. For less spring tension, loosen the locknuts.
 - The plow skids are adjustable. General skid setting is even with the plow wear bar bottom edge, higher settings reduce the chance of rocks and gravel from being collected.
 - To increase traction during plow operation, operators can try: Securing weight to the UTV for additional tire downforce, reducing tire air pressure, or installing tire chains.

SAFETY INFORMATION
Our plow systems were designed with your safety in mind. Please read and understand all Cautions, Notices and Warnings in this manual before you begin. In order to protect you and your UTV, certain parts of the plow system and/or hardware are designed to fail when the equipment is over-stressed.

WARNING
To avoid personal injury or damage to your vehicle: Do not install plow system over plastic guard components, which can compress over time and loosen the installation, resulting in poor product performance and/or damage to the UTV. Do not allow mounting hardware or plow blade to interfere with UTV operational items such as brake lines, coolant hoses, control cables, steering, electrical or any other function.

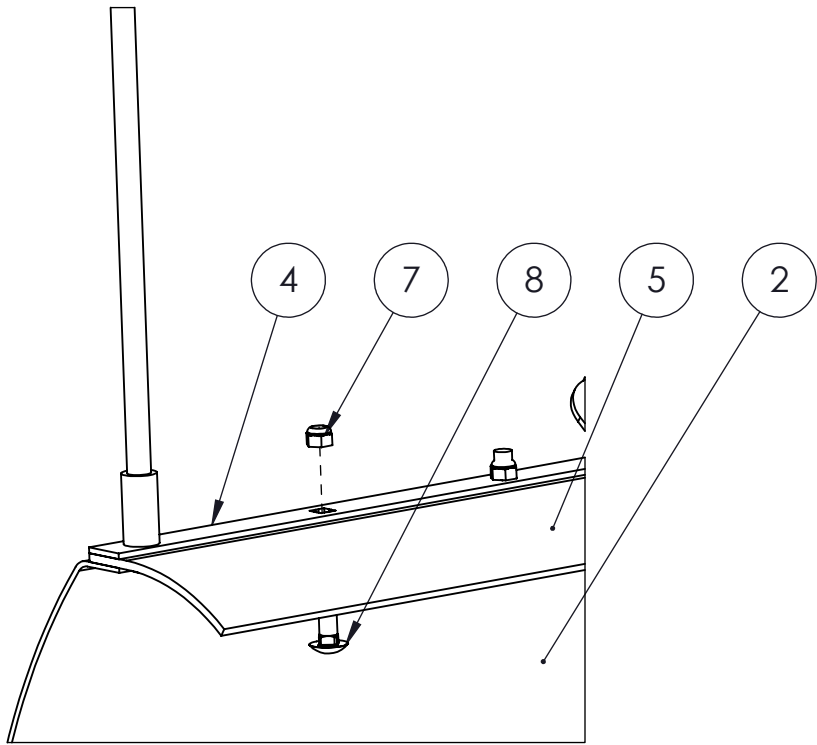
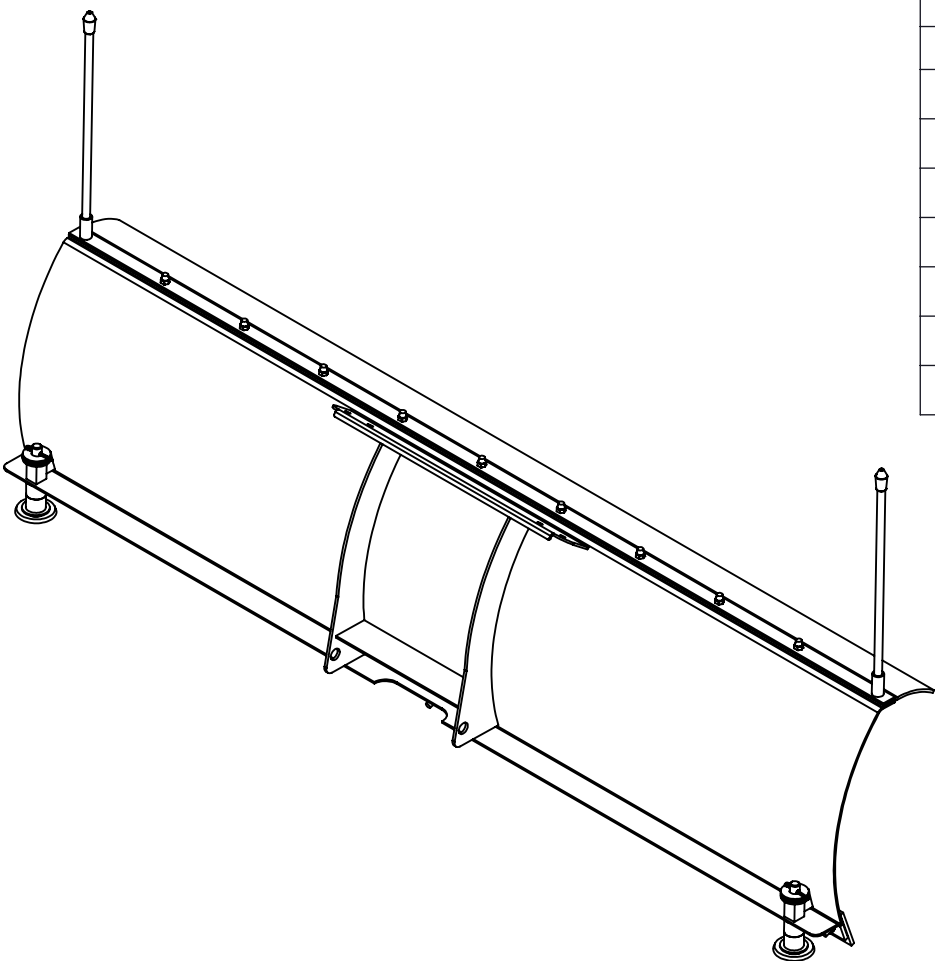
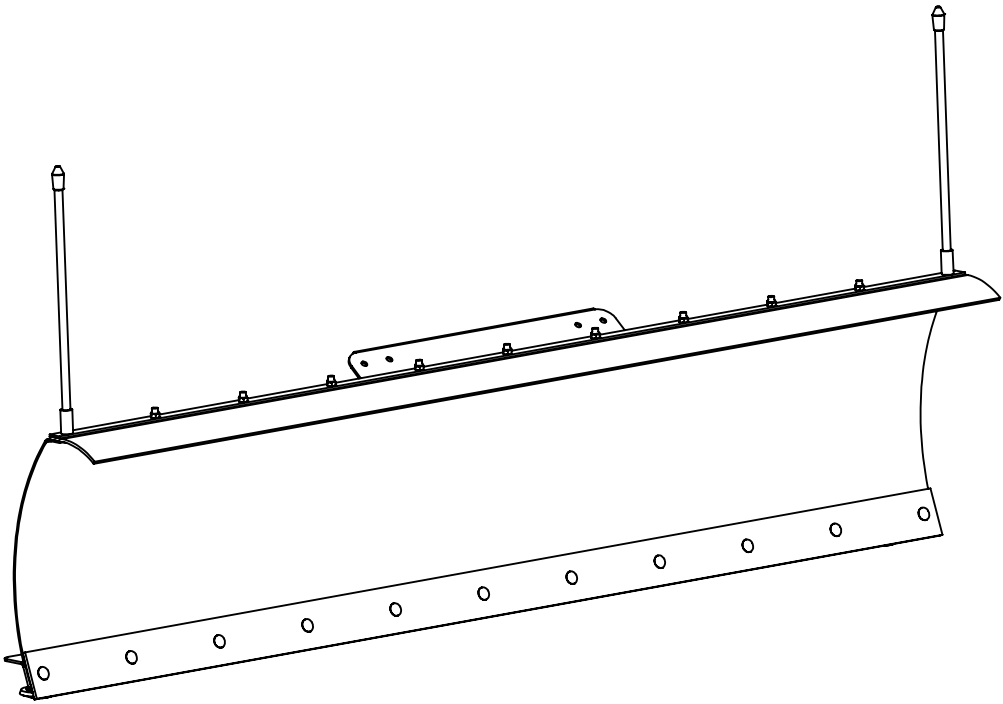
- BEFORE YOU BEGIN:**
- Please read and understand all instructions.
 - Verify all parts and tools are accounted for.
 - To ensure a satisfactory installation, follow all steps correctly and in the sequence described.
 - All directions referring to right and left are when the rider is sitting on the machine.

- INSTALLATION NOTES: TOOLS REQUIRED:**
- Basic Hand Wrench and Socket Set
 - Plastic Cutting Tool - for opening packaging.

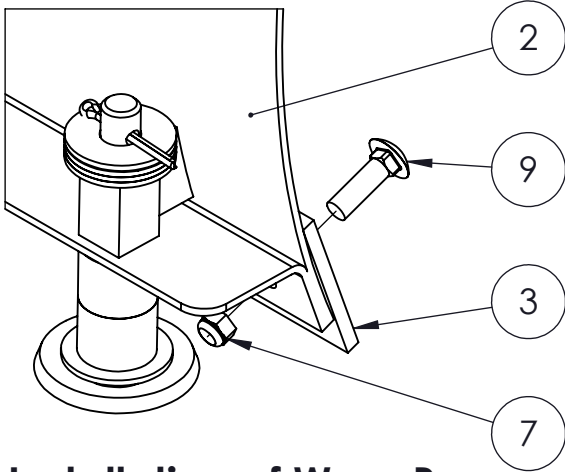
72" Denali Universal Plow System

Step 1 - Account for Below Listed Items

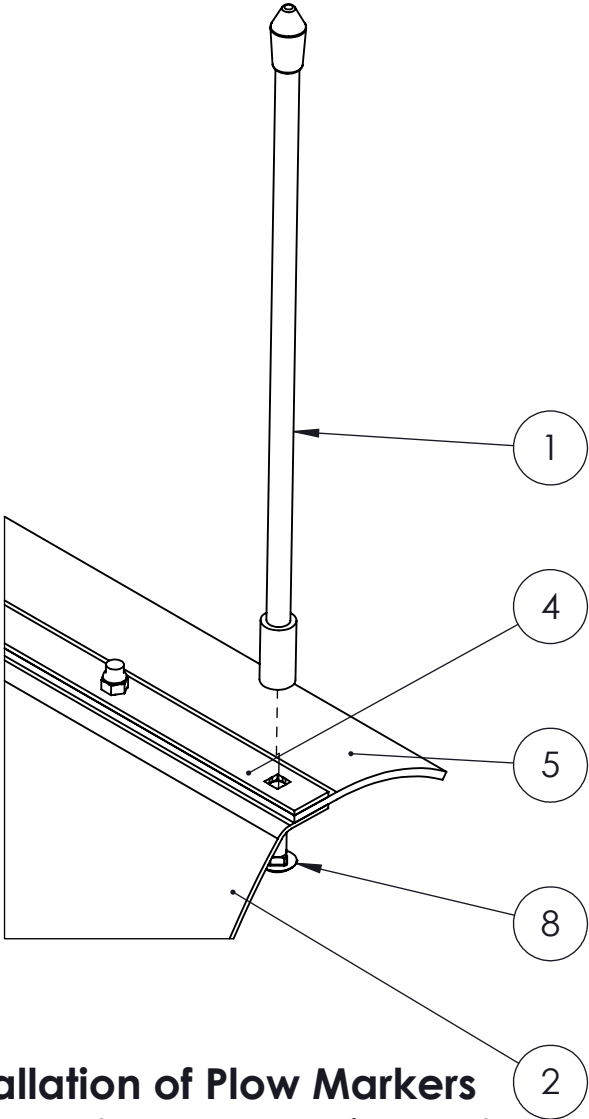
ITEM NO.	DESCRIPTION	50" Width/QTY.
1	Plow Marker	2
2	Snow Blade	1
3	Cutting Edge - reversable	1
4	Snow Flap Cover Plate	1
5	Rubber Snow Flap	1
6	Snow Blade Skid Plate Assembly	2
7	3/8-16 Nylock Nut	20
8	Carriage Bolt 3/8-16 x 1.00"	11
9	Carriage Bolt 3/8-16 x 1.25"	11



Step 1 - Installation of Snow Flap Hardware
Repeat 9 locations for this step



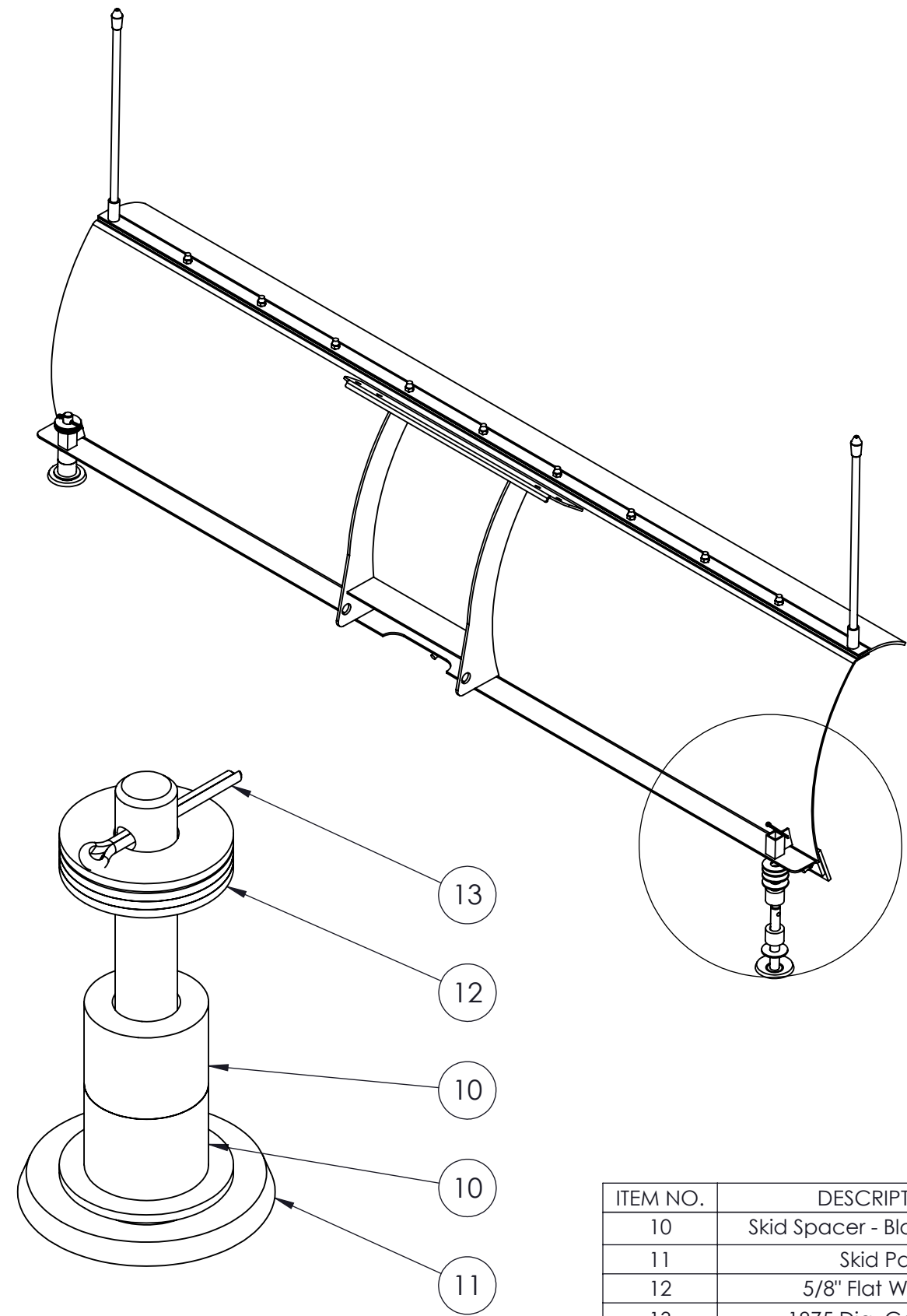
Step 2 - Installation of Wear Bar
Repeat 11 locations for this step



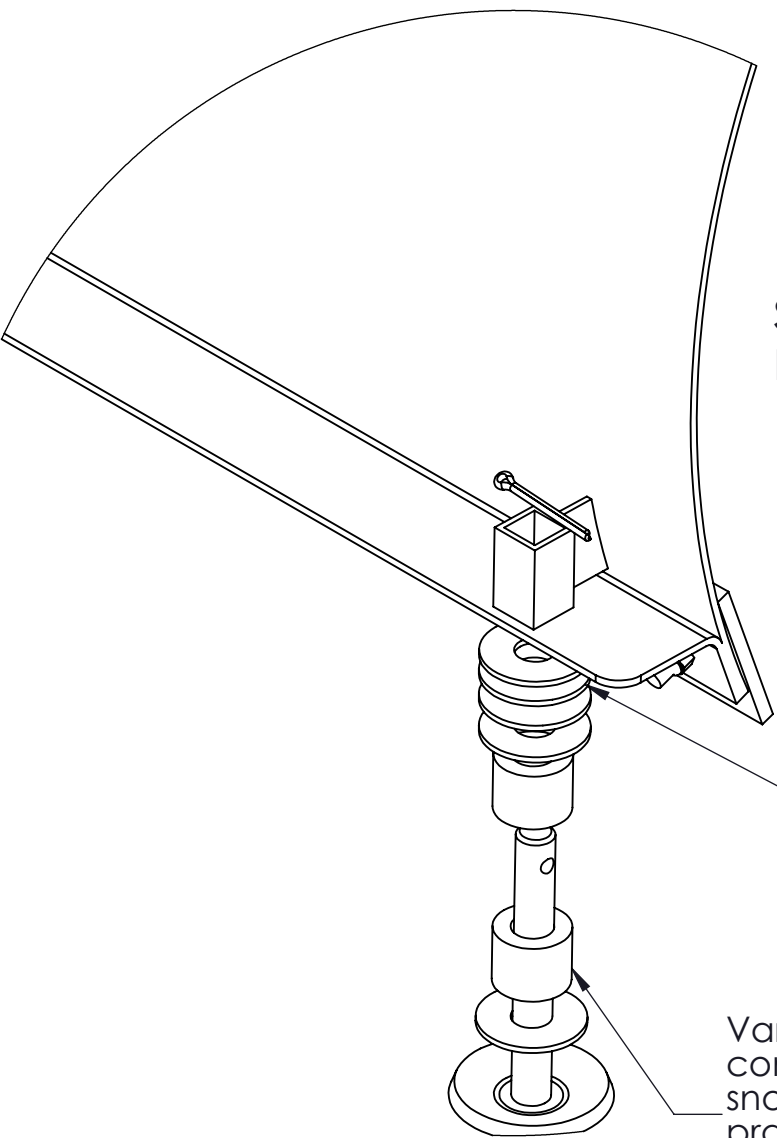
Step 3 - Installation of Plow Markers
Secure Plow Marker By screwing onto Carriage Bolt with Pliers or Vise Grips.

Repeat at 2 locations for this step

72" Denali Universal Plow System

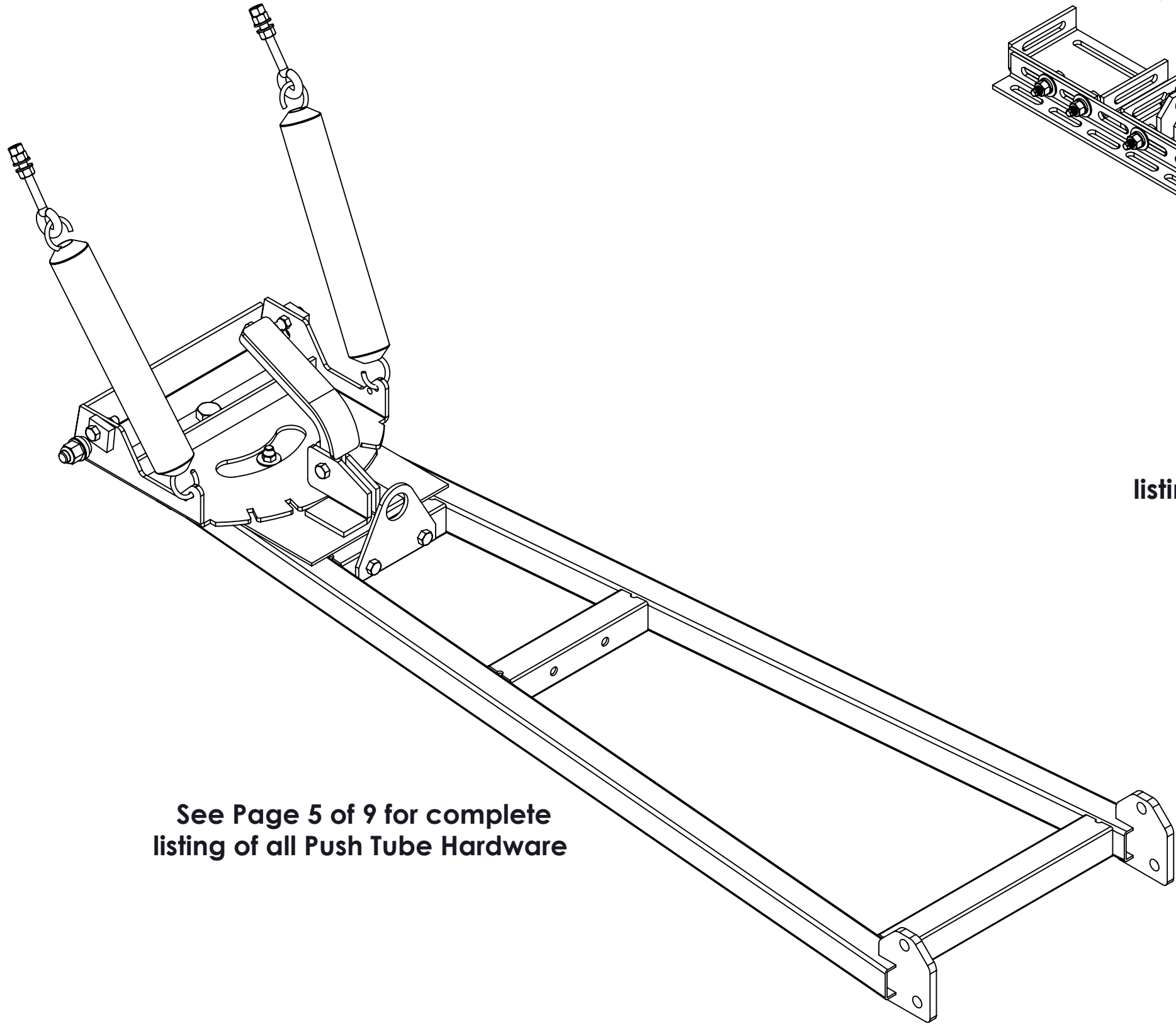


ITEM NO.	DESCRIPTION	QTY.
10	Skid Spacer - Black Rubber	2
11	Skid Pad	1
12	5/8" Flat Washer	5
13	.1875 Dia. Cotter Pin	1

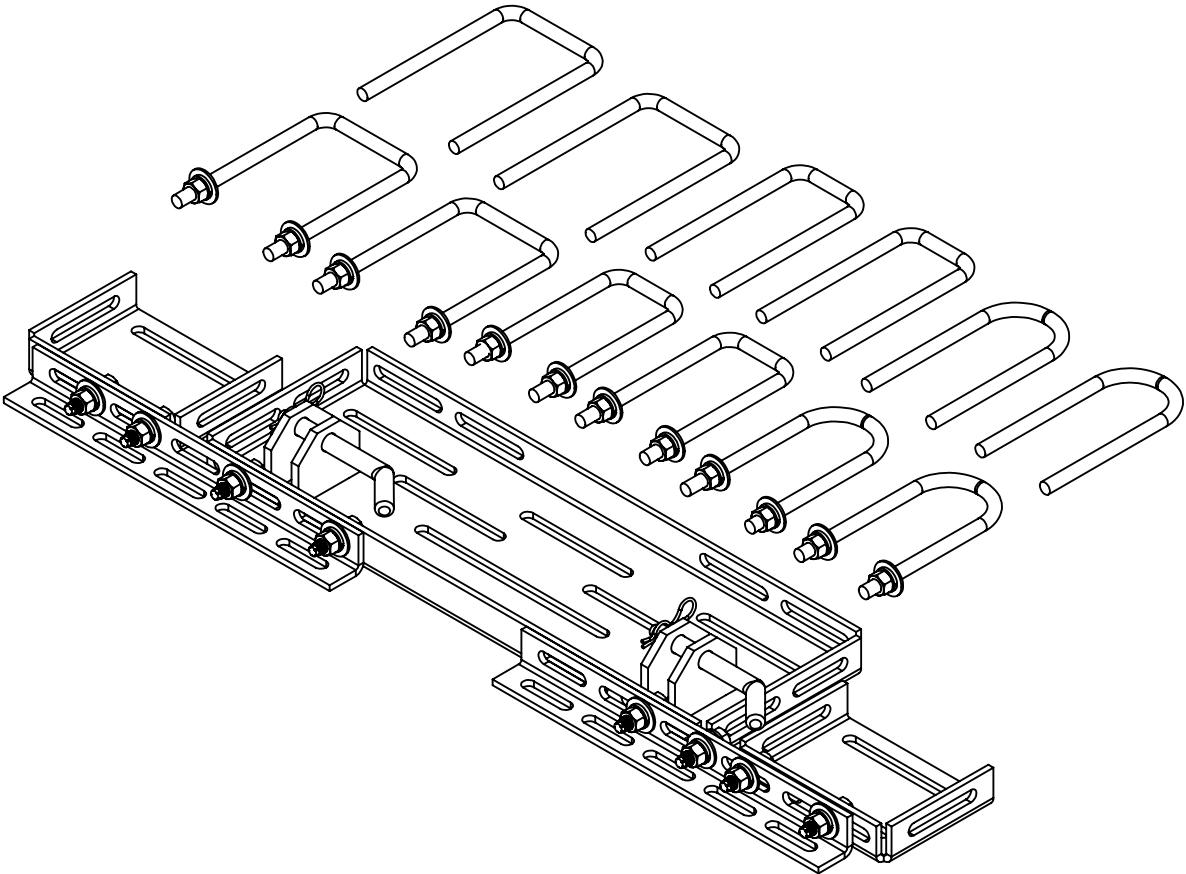


Step 4 - Installation of Skid Pad
Repeat at both locations for this step

72" Denali Universal Plow System



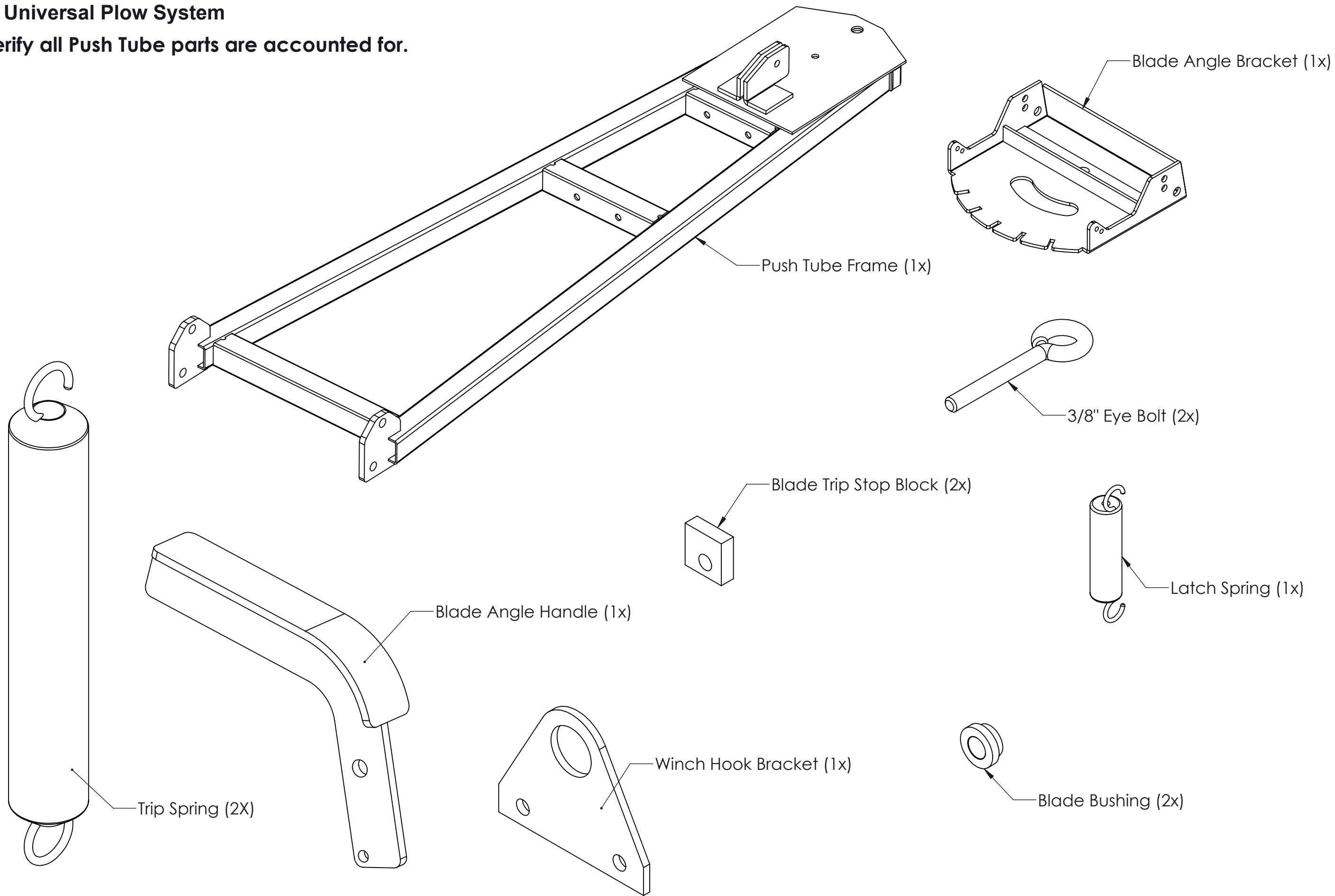
**See Page 5 of 9 for complete
listing of all Push Tube Hardware**



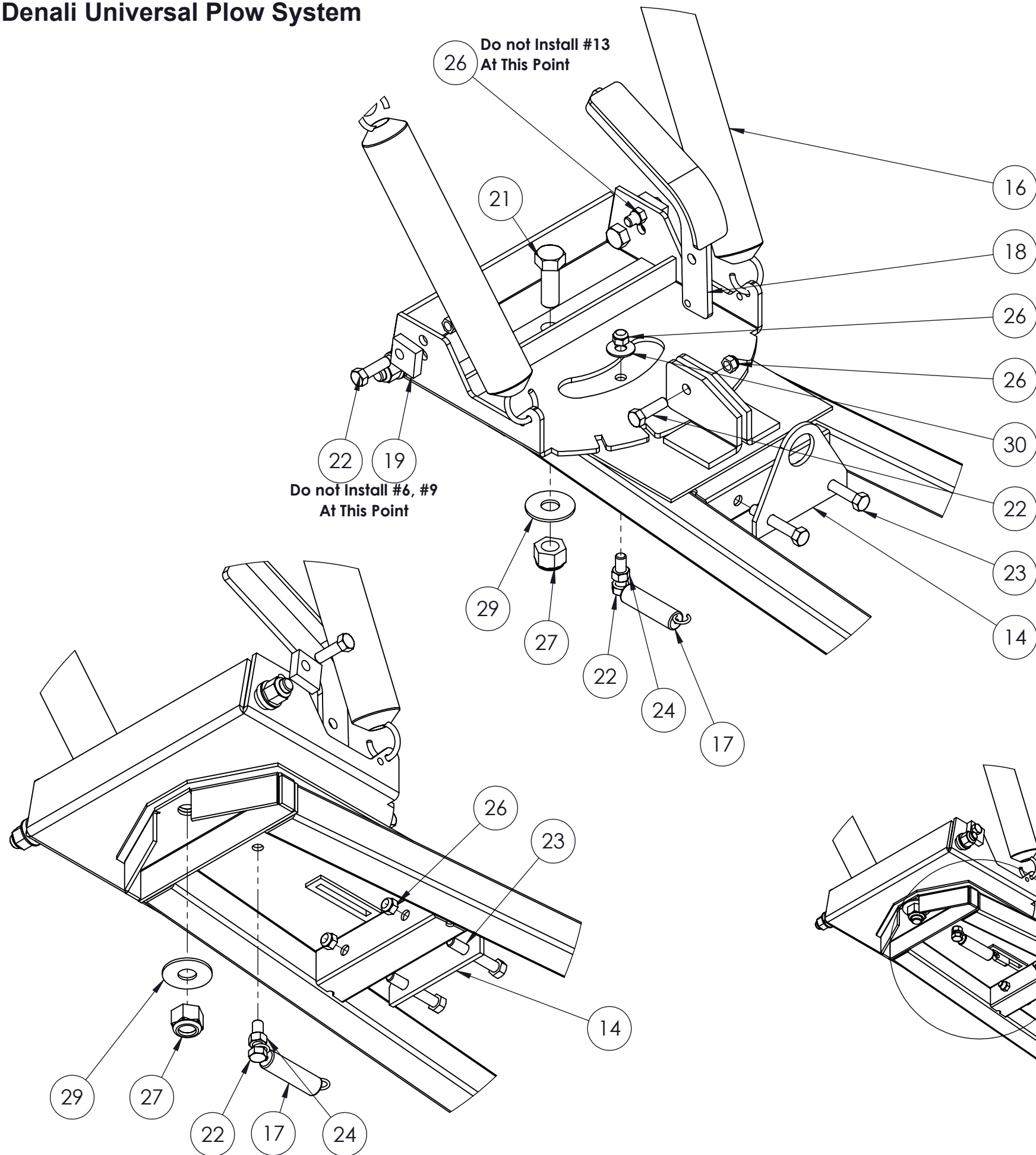
**See Page 8 of 9 for complete
listing of all Frame Mounting Hardware**

72" Denali Universal Plow System

Step 5 - Verify all Push Tube parts are accounted for.

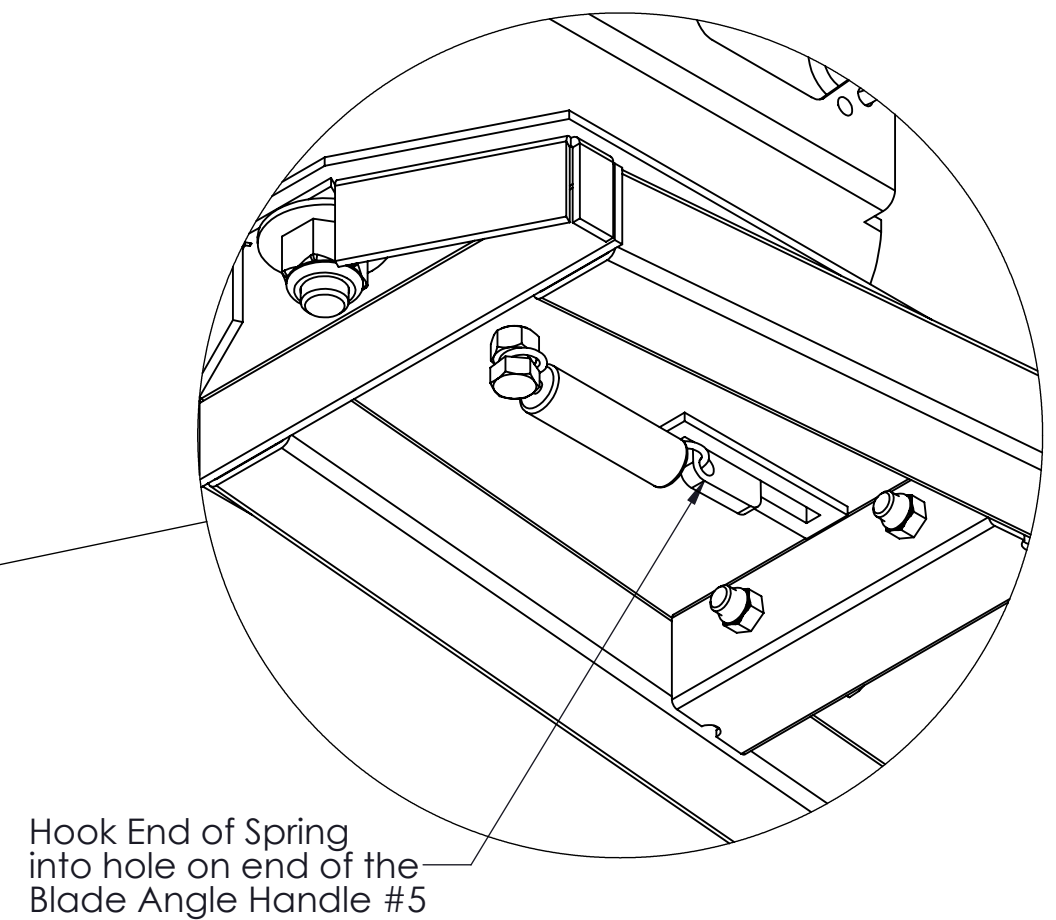


72" Denali Universal Plow System



ITEM NO.	DESCRIPTION	Default/QTY.
14	Winch Hook Bracket	1
15	Push Tube with Blade Angle Bracket Assembly	1
16	11.875" x 1.75 x .22 Blade Trip Spring	2
17	3.50" x .70" x .125" Latch Spring	1
18	Blade Angle Handle	1
19	Blade Trip Stop Block	2
20	Blade Bushing	2
21	5/8-11 Hex Bolt 1.75"	1
22	3/8-16 Hex Bolt 1.25"	4
23	3/8-16 Hex Bolt 2.25"	2
24	3/8" Hex Nut	7
25	3/8-16 x 3.00" Eye Bolt	2
26	3/8-16 Nylock Nut	6
27	5/8-11 Nylock Nut	1
28	3/8" Flat Washer	4
29	5/8" Flat Washer	1
30	3/8" Flat Washer	1
31	1/2-13 Nylock Nut	2
32	1/2" x 1.50" Hex Bolt	2
33	1/2" Flat Washer	2

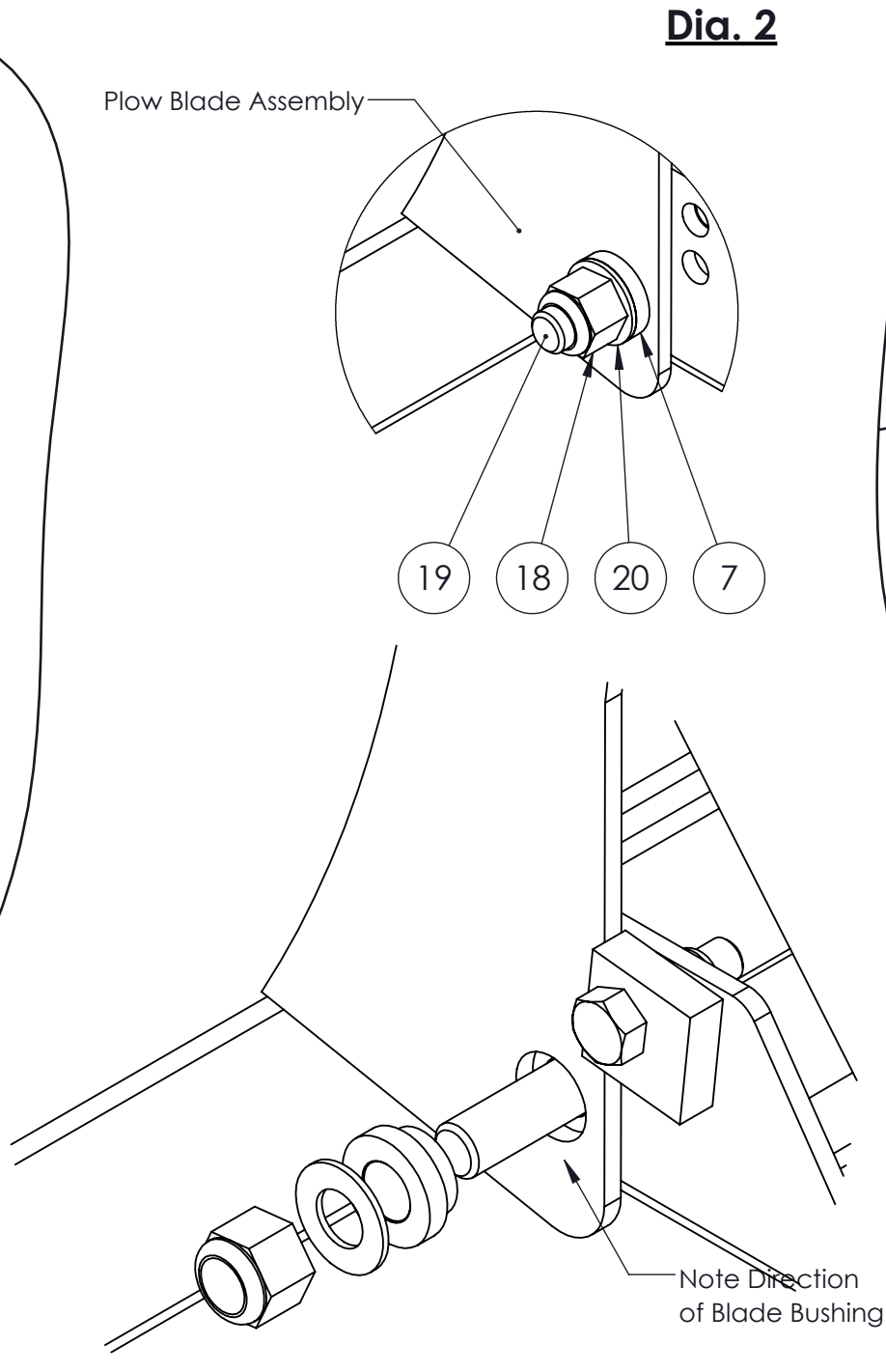
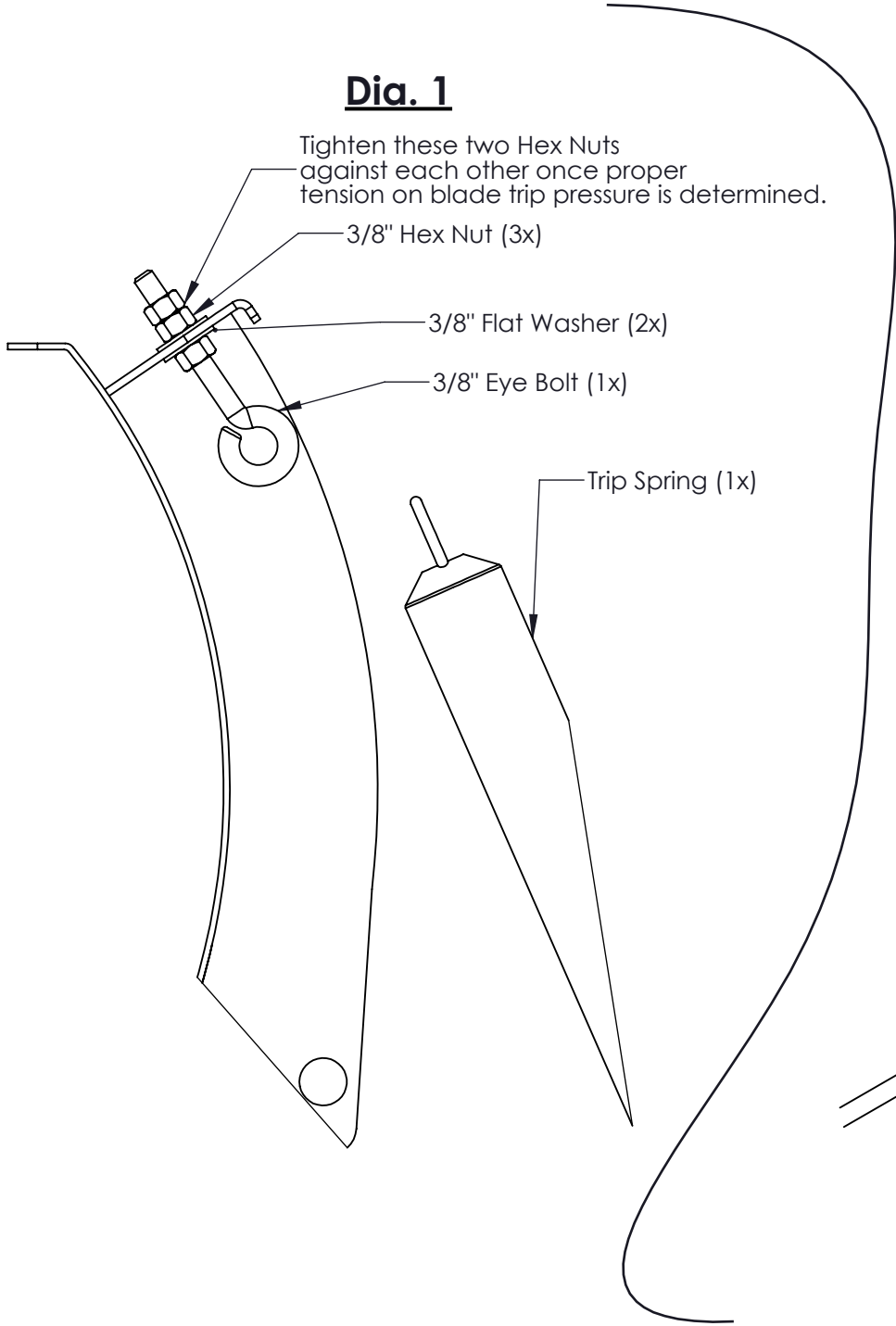
Step 7 - Assembly of push tube components



72" Denali Universal Plow System

Step 6 - Assembly of Blade to Push Tube Frame.

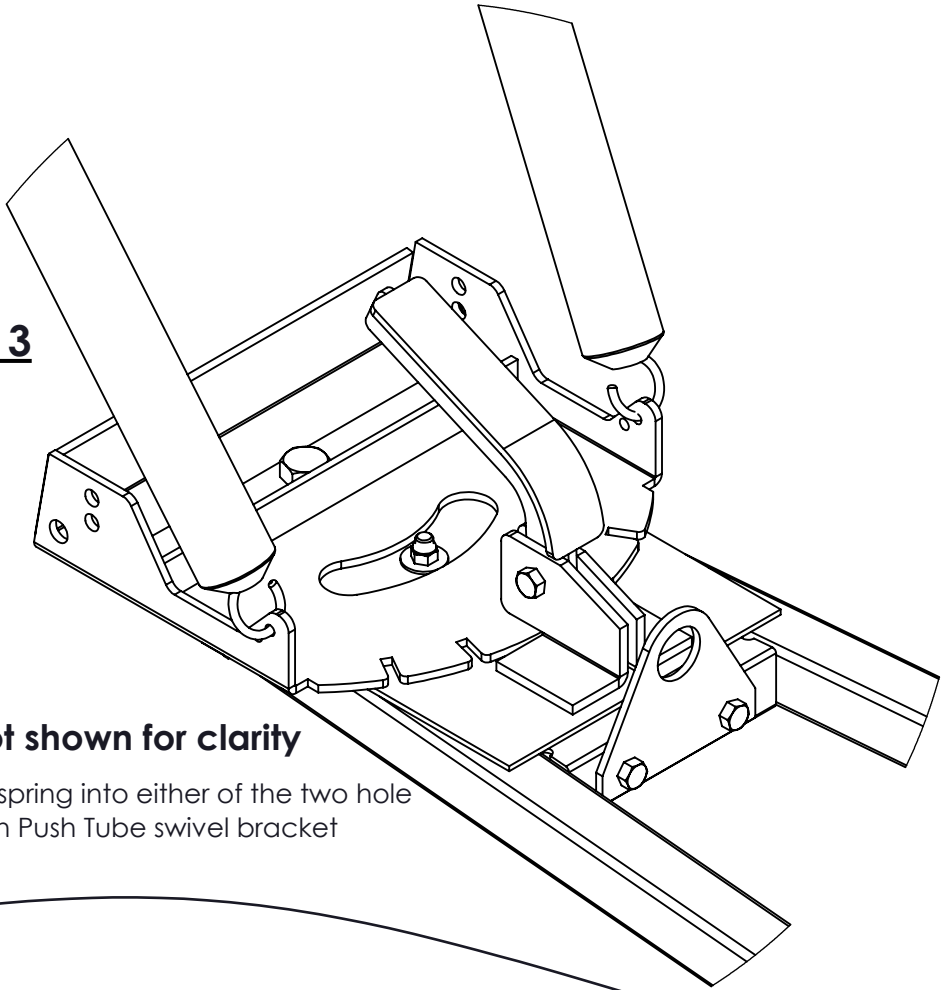
- 1. Assemble Eye Bolts and eye bolt hardware onto plow blade (See Dia. 1)
- 2. Assemble Plow Blade to Push Tube Swivel Bracket with provided hardware shown in (Dia. 2)
- 3. Secure trip spring into either of the two hole locations on Push Tube swivel bracket (See Dia. 3)
- 4. Tip Blade back towards push tube to secure top ends of Trip Springs into eye bolt.
- 5. Once both ends of trip springs are secured, install Trip Blade Stop Block (See Dia. 4)



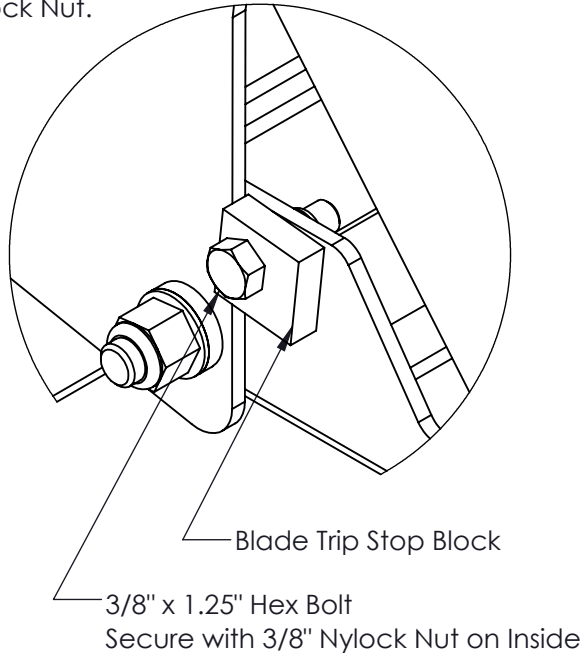
Dia. 3

Blade not shown for clarity

Secure trip spring into either of the two hole locations on Push Tube swivel bracket



- Dia. 4**
- 1. Apply pressure to back of blade pushing forward to extend the trip springs.
 - 2. Insert Blade Trip Stop Block along with 3/8" x 1.25" Hex Bolt thru hole in swivel bracket at this time.
 - 3. Secure with provided 3/8" Nylock Nut.



72" Denali Universal Plow System

ITEM NO.	DESCRIPTION	QTY.
34	Mounting Plate V3	1
35	Extension Plate V3	2
36	Extension Mounting Bracket V3	2
37	Serated Hex Flange Bolt 3/8"-16 x 1 1/4"	8
38	3/8" Flat Washer	20
39	3/8" Lock Washer	20
40	3/8" Hex Nut	20
41	R-Clip Medium	2
42	3/8-16 x 2.00" x 5.50" Long Sqr. U-Bolt	4
43	3/8-16 x 2.00" x 5.50" Long U-Bolt	4
44	1/2" Dia. Bent Hitch Pin	2
45	3/8-16 x 3.00" x 5.50" Long Sqr. U-Bolt	4

- * The shown examples are for reference only!
- * Many other configurations can be used to fit your specific Make, Model or Model Year of UTV.
- * Round and/or Square U-Bolts can be used in any combination as required by your specific installtion application.

Please Note!
The Universal Push Tube Design was design to fit most Make, Model and Model years of UTV's.

However, we cannot guarantee this will fit every model or brand on the market.

General UTV vehicle mounting instructions:

Prior to assembling any of the vehicle mounting hardware components follow the below listed instructions.

Locate a solid frame mounting location that is appropriate for securing the Snow Plow Vehicle Mounting Components that is located close to the main frame of the vehicle, preferably on the frame running from the front to back of the machine. Do not secure to any suspension, brake or mechanical components when selecting your mounting location for this hardware.

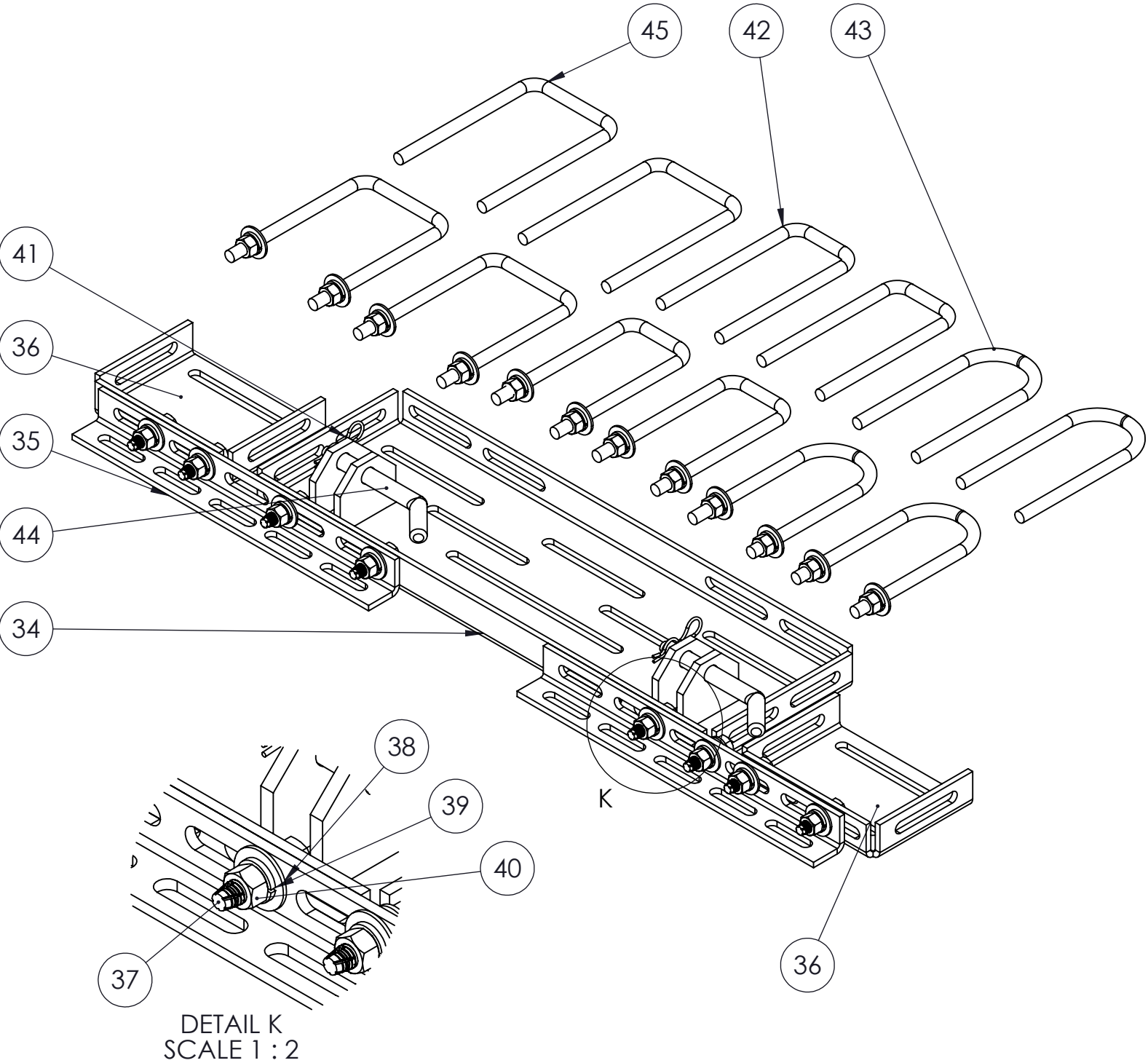
Installation may require removing or drilling of skid plates or protective frame plates, use caution if drilling into these components to prevent damage to exisiting electrical or mechanical components.

Be aware of all electrical wiring harnesses, brake lines or any vehicle components that could come in contact with any of the Snow Plow mounting hardware or plow blade components so that you do not restrict or prevent the safe operation of your vehicle. Always inspect for anything that could cause damage to any vehicle components.

The mounting hardware that has been provided for assembly has been provide to be used in various configurations. Some hardware may not be required depending on your particular application.

The large “Square” and “U” shaped u-bolts are included to provide various options that provide greater flexibility for mounting on a wide range of brands and models of UTV's. Use the best suited hardware combination that works best with your mounting application. The hardware and various components has been designed to fit various widths of frames and mounting locations, this hardware can be configured in various positions to allow the best flexibility in mounting conditions.

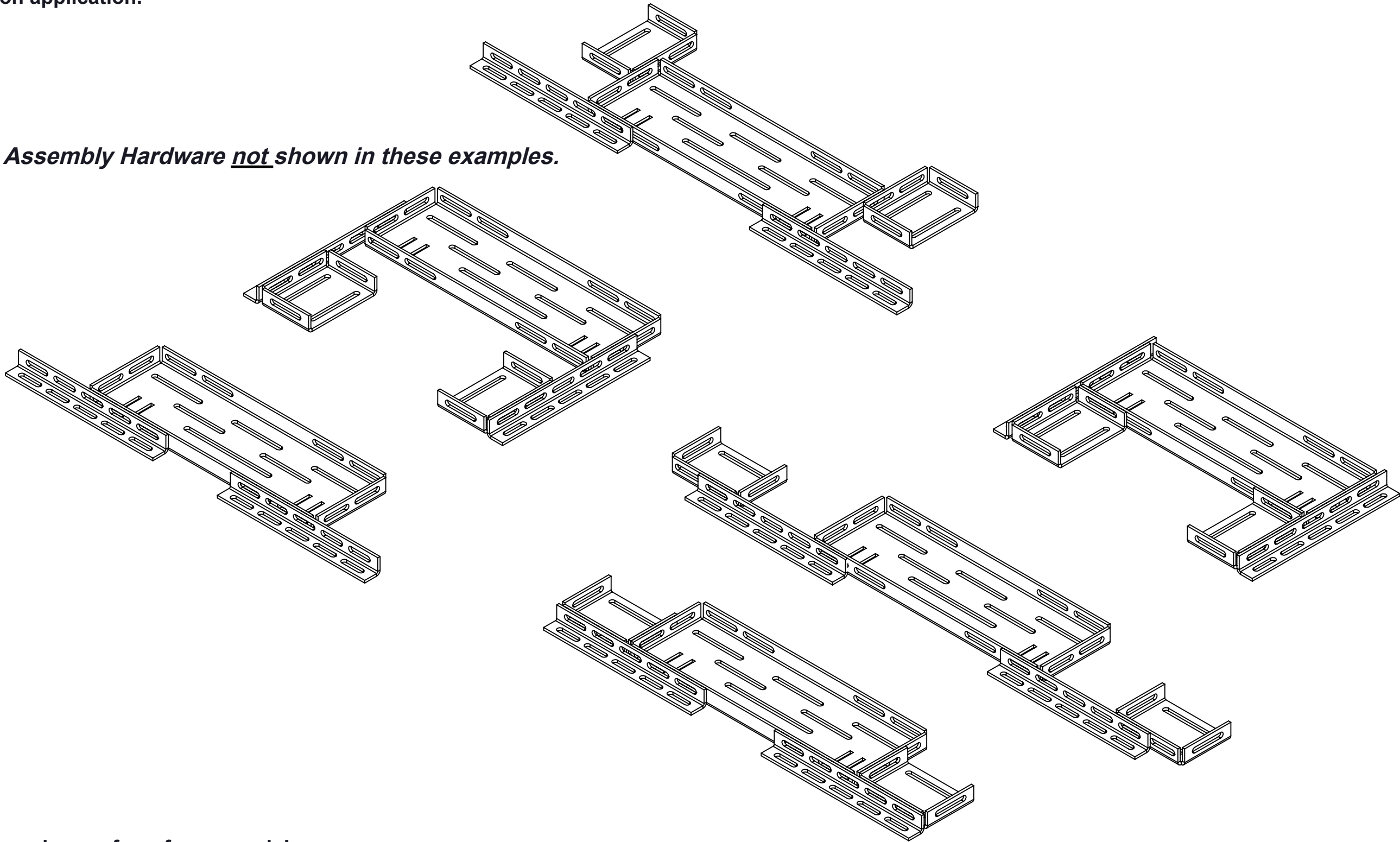
Note: Final location and hole locations required to mount this hardware will be determined by the individual UTV application, it may be required to use a different hole spacing and location depending on your particular installation application.



72" Denali Universal Plow System

Note: Final location and hole locations required to mount this hardware will be determined by the individual UTV application, it may be required to use a different hole spacing and location depending on your particular installation application.

U-Bolts and Assembly Hardware not shown in these examples.



- * The shown examples are for reference only!
- * Many other configurations can be used to fit your specific Make, Model or Model Year of UTV.
- * Round and/or Square U-Bolts can be used in any combination as required by your specific installtion application.