

# PRO ARMOR

EVERY RIDE HAS A STORY



## G-Force Seat & Base Instructions (CA162S180BL/CA162S184)

### TOOLS REQUIRED

- » 18MM, 13MM, 16MM ,SOCKET/RATCHET
- » 13MM WRENCH
- + IF REPLACING STOCK SEAT BELT  
(18MM WRENCH & T27 TORX BIT)



1 Remove the cushion from the stock seat. Using a 13mm socket, remove the 4 bolts.



2 Remove the lower bolt for the stock seat belt with a 16mm socket or wrench.



3 Now you can remove the seat from the car and begin to take the 2 seat sliders out. First remove the bolts on the front of each seat slider with a 13mm wrench and socket.



4 Then remove the 2 nuts from the back of the seat sliders with an 18mm socket.



5 With both seat sliders removed from the car place your new pro armor seat base on and align with the 4 bolts. Re-use the stock bolts that were removed in step 1. Use a 13mm socket.



6 Place your Pro Armor seat face down and attach the seat base to the seat with the 4 1/4-20 bolts that are provided in your hardware pack. Use a 13mm socket or wrench to do this.



At this point you will either install the stock seat belt to the side of the seat slider or new Pro Armor harness. (harness is recommended)



Now you are ready to put the seat back in the car. Place the aluminum spacers on the stud that the seat sliders will be installed.

• There are 4 aluminum spacers provided in your hardware pack. Place either the 2 short spacers or long spacers below the seat sliders and the other 2 on top.

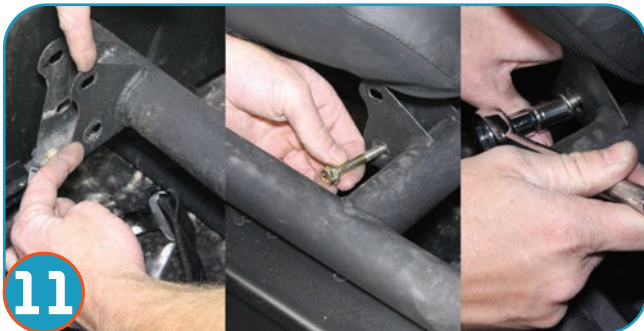
• You can adjust the rear height of the seat by placing either the short or long spacers on the bottom of the sliders. Just note that the equal lengths should be on the same side of the sliders.



Place the seat in the car and drop the sliders on to the studs so that they are resting on top of the spacers.



Place the other 2 spacers on the stud and re-use the 2 nuts that were removed in step #4 in the seat base installation. Tighten the 2 nuts with a 18mm socket.



Now align the front of the seat sliders in the bracket and re-use the 2 bolts that were removed in step #3 of the seat base install instructions. Tighten with a 13mm wrench and socket.

• There are also 2 height adjustments for the front of the seat.

**⚠ WARNING**

**Improper Use of Off-Highway Vehicles Can Cause Severe Injury or Death**

**Be Prepared**

- Fasten seat belts.
- Wear an approved helmet and protective gear.
- [Reserved for message about other occupant restraint devices.]
- Each rider must be able to sit with back against seat, feet flat on floor (and foot rests), and hands on steering wheel or handhold(s), where equipped]. Stay completely inside the vehicle.

**Be Sure Riders Pay Attention and Plan Ahead**

If you think or feel the vehicle may tip or roll, reduce your risk to injury:

- Keep a firm grip on the steering wheel or handholds and brace yourself.
- Do not put any part of your body outside of the vehicle for any reason.

**⚠ WARNING**

- **Never** stick hands, head or arms outside of vehicle at any time when it is in motion.
  - **Always** wear and use proper safety equipment when using any Pro Armor product.
  - Improper use of directions and/or product can result in injury to yourself or damage to your vehicle.
  - **Disclaimer please read:** This product is sold without warranty expressed or implied. No warranty or representation is made as to the products ability to protect the user / occupant from any injury or death in any manner of use. The user assumes that risk. The effectiveness of this equipment is directly related to the manner in which it is installed, used, and / or maintained.
- Proper installation is solely the responsibility of the installer, and will not be assumed by Pro Armor.**
- If you have questions about your installation or are unable able to complete installation, contact Pro Armor Customer Service (888)312-7667 or have an authorized dealer or trained technician, inspect your installation.