

***Thank you for choosing High Lifter!***

**HL-FWB-RZR1-2**

High Lifter 10K Front Winch Bumper Polaris RZR 1000 2019 ONLY

***Lift Kits • Tires • Suspension • Snorkels***

***HIGHLIFTER***

***Axles • Clutch Kits • Portals • Rad Kits***

**Contact Us**

**Mon-Fri 8am - 5pm CST**

**highlifter.com**

**sales@highlifter.com**

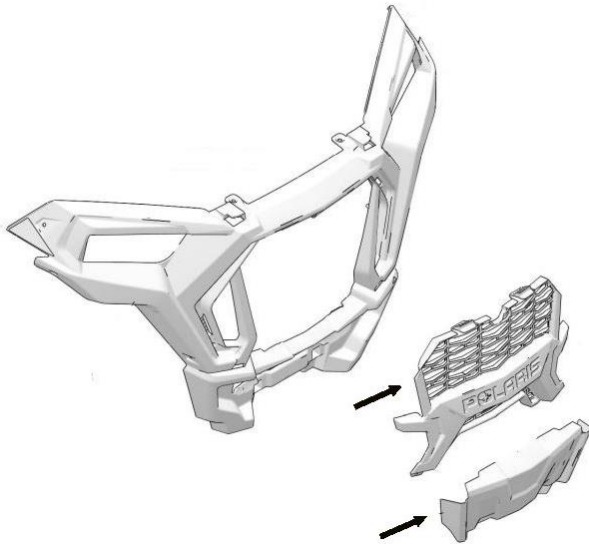
**800-699-0947**



Hardware	Description	Qty
79A	1 1/2" Round Steel Weight Mount	2
HC81234Z	1/2-13 x 3/4 Bolt	2
MFW10	10mm Flat Washer	4
MLN10-1.5	10mm Lock Nut	2
MCS10X30-10.9	10mm x 30mm Bolt	4
MFW12	12mm Flat Washer	4
MLN12-1.75	12mm Lock Nut	2
MCS12X30-10.9	12mm x 30mm Bolt	2
FW38Z	3/8 Flat Washer	4
FW8716	7/16 Flat Washer	2

## Polaris RZR 1000 10k Winch Bumper - Instructions

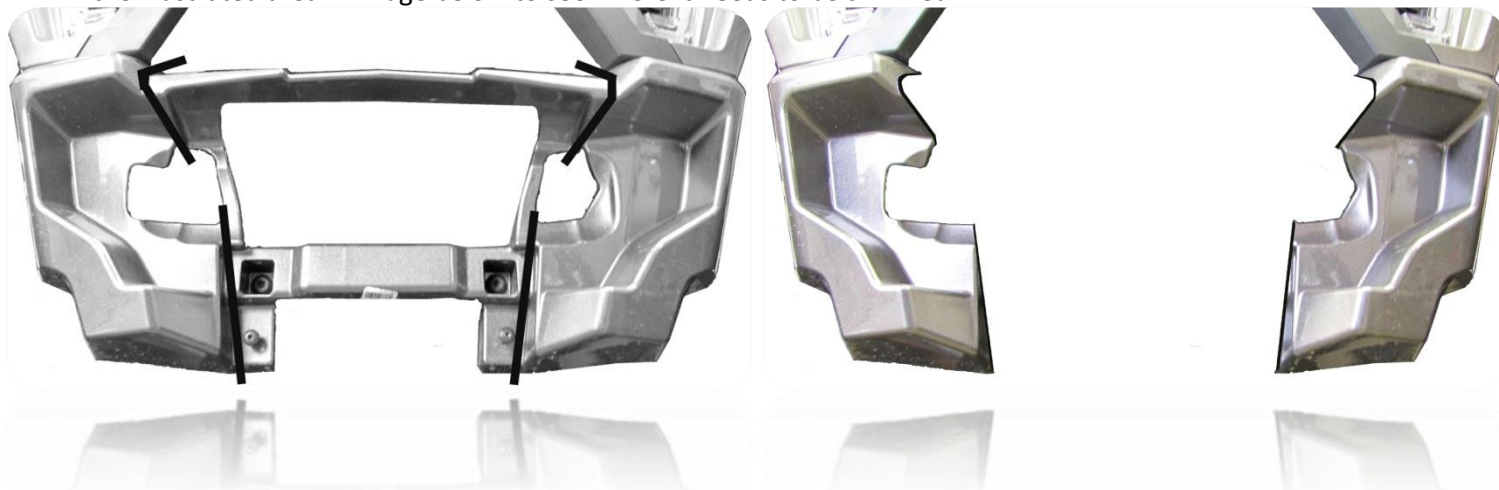
1. Remove the front factory bumper if you have a model that comes equipped with one. For example, the High Lifter Edition RZR has a bumper from the factory. If you do not have a bumper from the factory, proceed to step number two.
2. Remove the winch cover and center grill from the front fascia.



3. Remove the front fascia with connecting radiator shroud. You will also need to disconnect the front head lights.



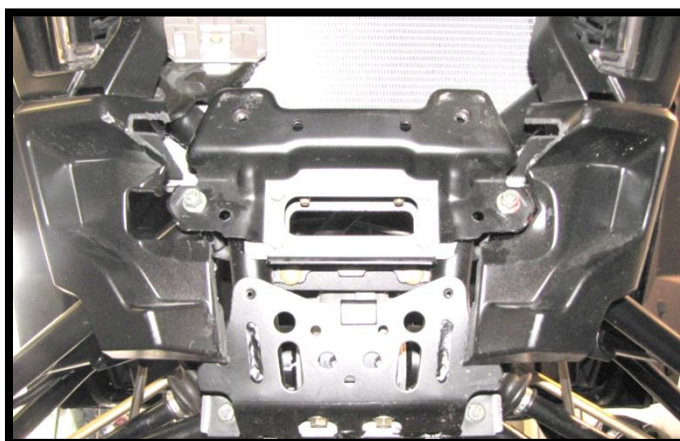
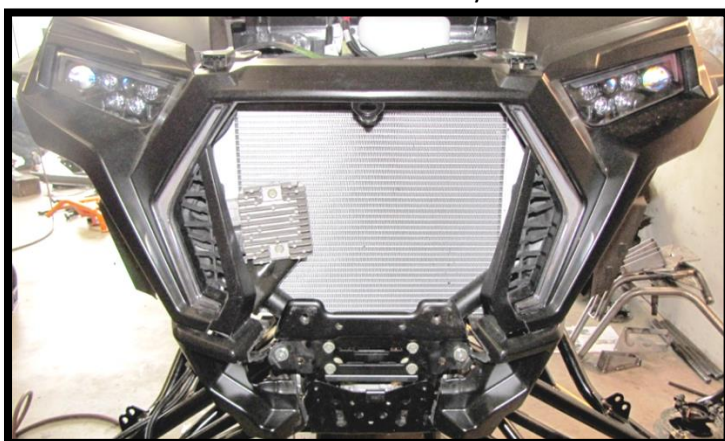
4. Once you have removed the front fascia, it will need to be trimmed to allow the new bumper to fit properly. Review the illustrated area in image below to see where it needs to be trimmed.



5. **This next step is optional and is done to make it easier to clean the radiator. This is NOT a requirement!** When trimming is complete, disconnect the radiator shroud from the front fascia for easier cleaning of the radiator.



6. Reattach the front fascia to the body of the RZR.



7. Attach the new High Lifter 10k bumper to the frame. Included in the kit is new hardware for mounting the bumper to the frame. Align the new bumper with the factory bumper mounting holes.



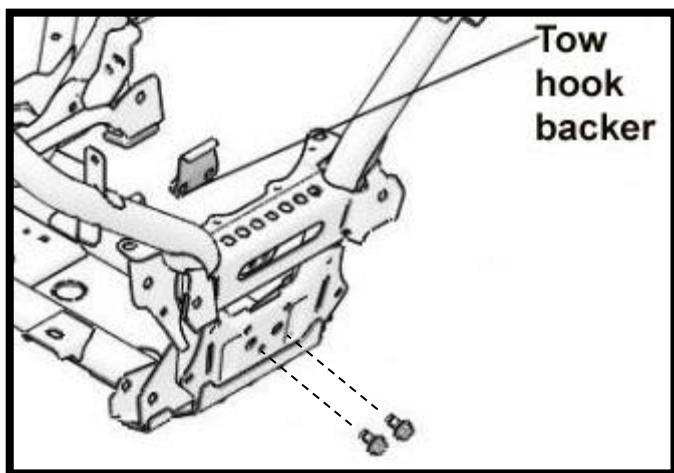
8. Connect the upper portion of the bumper:
- If your rZR has welded in nuts on the backside of the frame, simply slide a **10mm flat washer** over a **10mm x 30mm bolt** and fasten it.
  - If your rZR DOES NOT have welded in nuts on the backside of the frame, slide a **3/8 flat washer** over a **10mm x 30mm bolt** and insert it through the bumper and the frame. Then slide another **3/8 flat washer** over the bolt and fasten it with a **10mm lock nut**.



9. Connect the lower portion of the bumper:
- For most RZR models you will use the **12mm x 30mm bolts**, **12mm flat washers**, and **12mm lock nuts**. Washers will be used on both front and backsides.



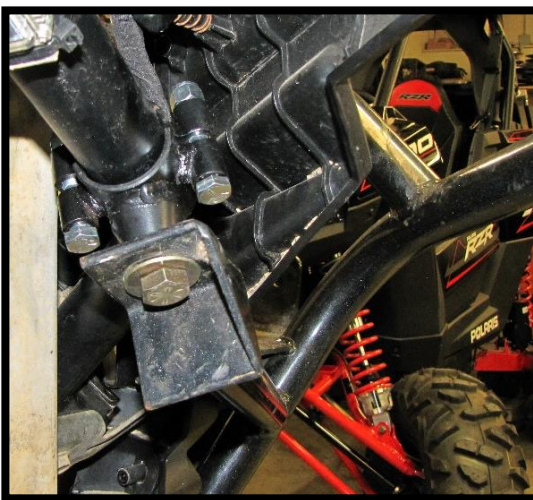
- b. If your model comes with a tow hook backer, you can use it and use **10mm x 30mm bolts** with **10mm flat washers**.



10. Now connect the two round steel weight mount brackets to the frame and then to the bumper. Loosely connect the two brackets to the frame first. Make sure the brackets are loose, so you can slide them into place.



11. Connect the two brackets to the bumper using the  $\frac{1}{2}$ " x  $\frac{3}{4}$ " bolts and  $\frac{7}{16}$ " flat washers. Once all hardware is in place fasten tight.



12. Reattach the center grill.



Thank You  
For Choosing  
**HIGHLIFTER**