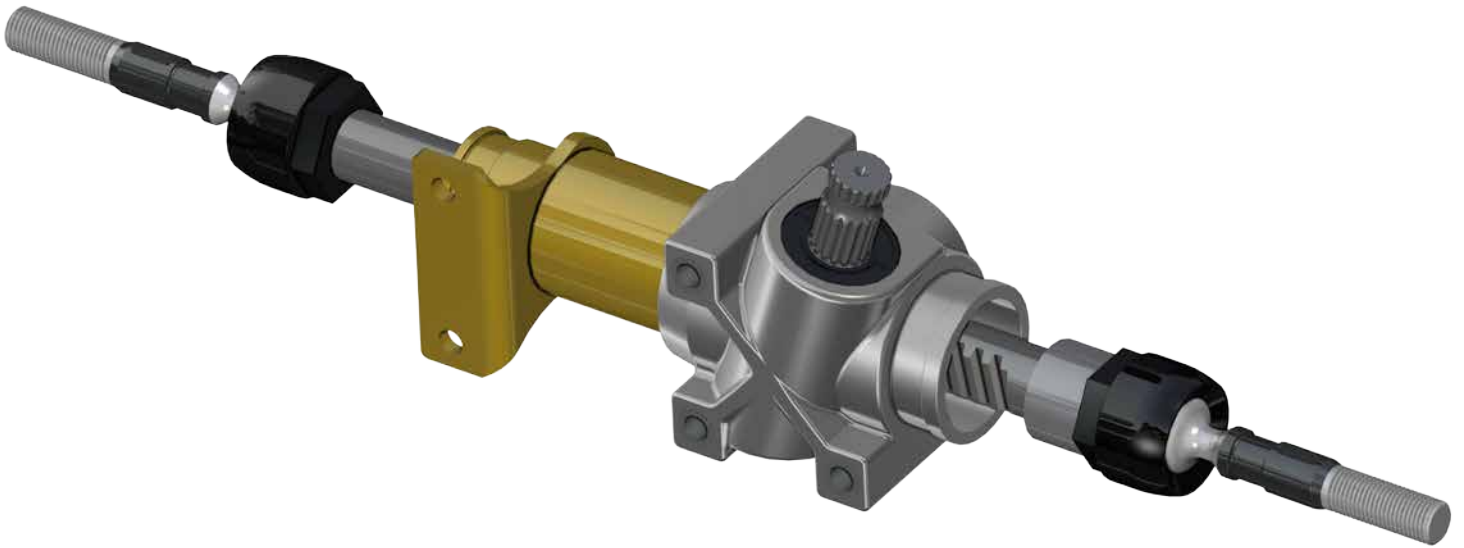
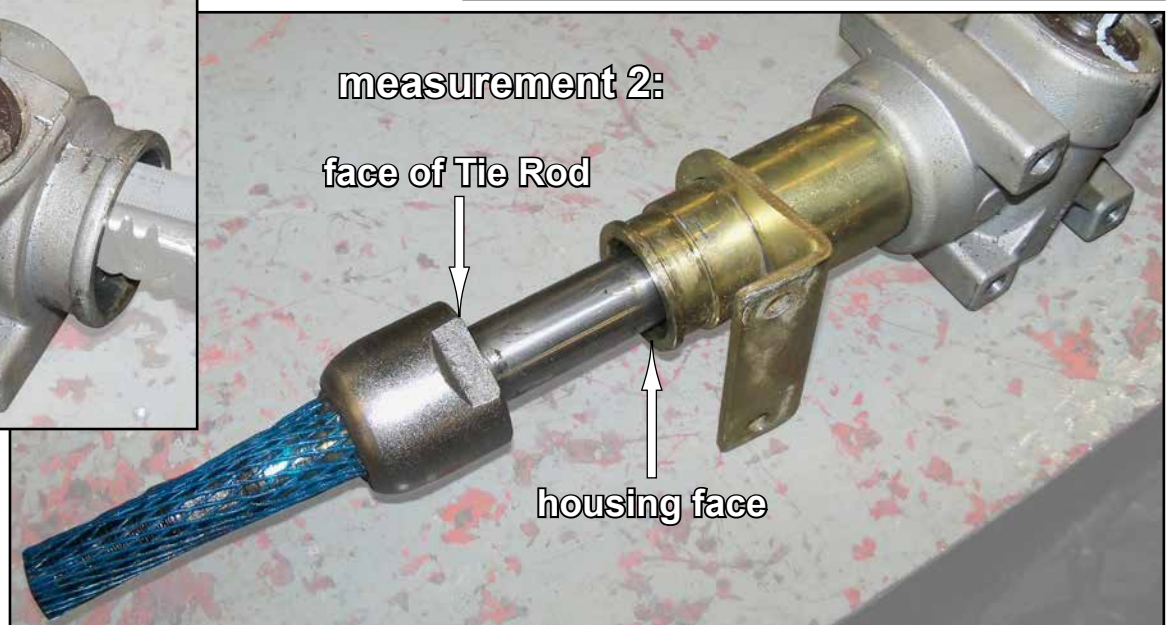
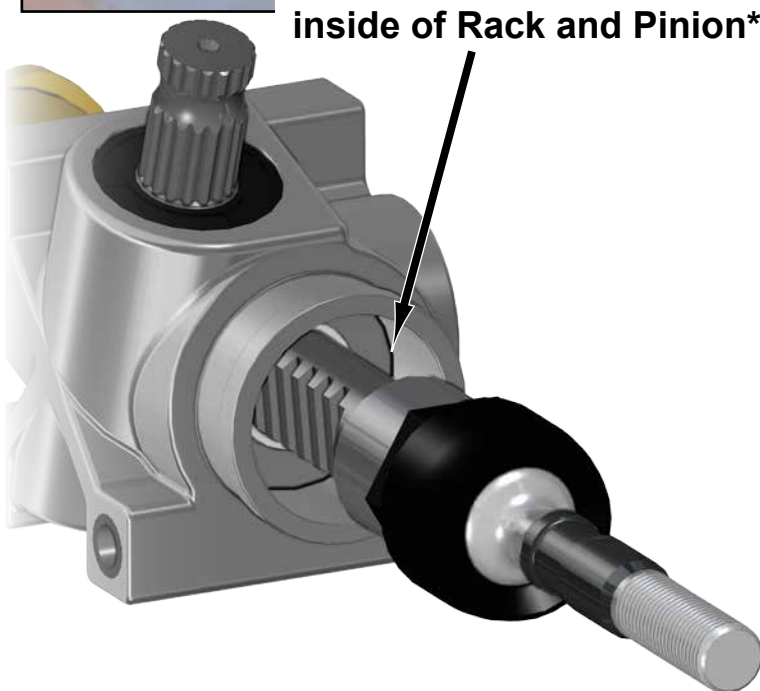
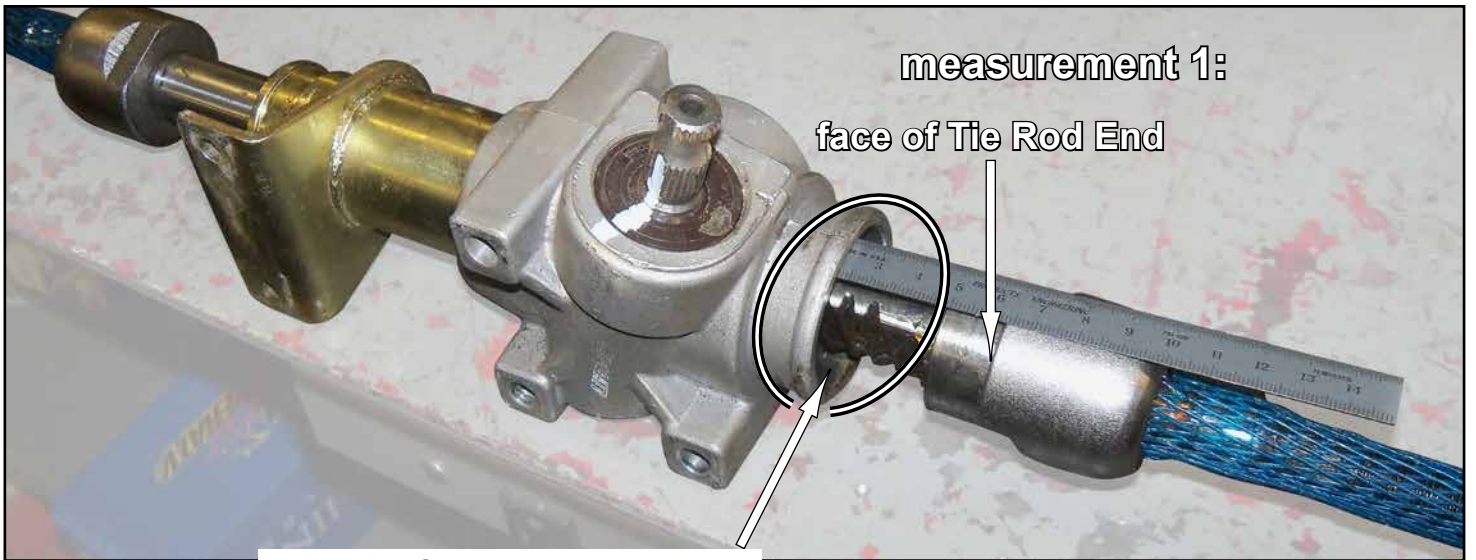


Verify, and adjust if necessary, centering of Rack and Pinion before installing.



1. Measure distance from inside of Rack and Pinion to face of Tie Rod End.
2. Measure distance from face of Tie Rod End to housing face.
3. Adjust Rack and Pinion until measurements are equal.
- Mark center.

(illustrations on following page)





Rack and Pinion

***SuperATV recommends using stock hardware when installing.
Provided hardware may also be used.***

Read instructions and view illustrations before beginning.

Need help with your installation?



sales@superatv.com



www.superatv.com



1-812-574-7777



**8:00am - 9:00pm EST M-Th
8:00am - 7:00pm EST Friday
9:00am - 2:00pm EST Saturday**

***Thank You
For Choosing***

SUPERATV.COM[®]

Liability Statement

SuperATV's[®] products are designed to best fit user's ATV/UTV under stock conditions. Adding, modifying, or fabricating any factory or aftermarket parts will void any warranty provided by SuperATV[®] and is not recommended. SuperATV's[®] products could interfere with other aftermarket accessories. If user has aftermarket products on machine, contact SuperATV[®] to verify that they will work together.

Although SuperATV[®] has thousands of satisfied customers, user should be aware that installing lift kits, long travel, or suspension kits, tires, etc. will change the ride of machine and may increase maintenance and part wear. Operating any off-road machine while, or after, consuming alcohol and/or drugs increases risk of bodily harm or death. No warranty or representation is made as to this product's ability to protect user from severe injury or death. SuperATV[®] urges operators and occupants to wear a helmet and appropriate riding gear at all times.

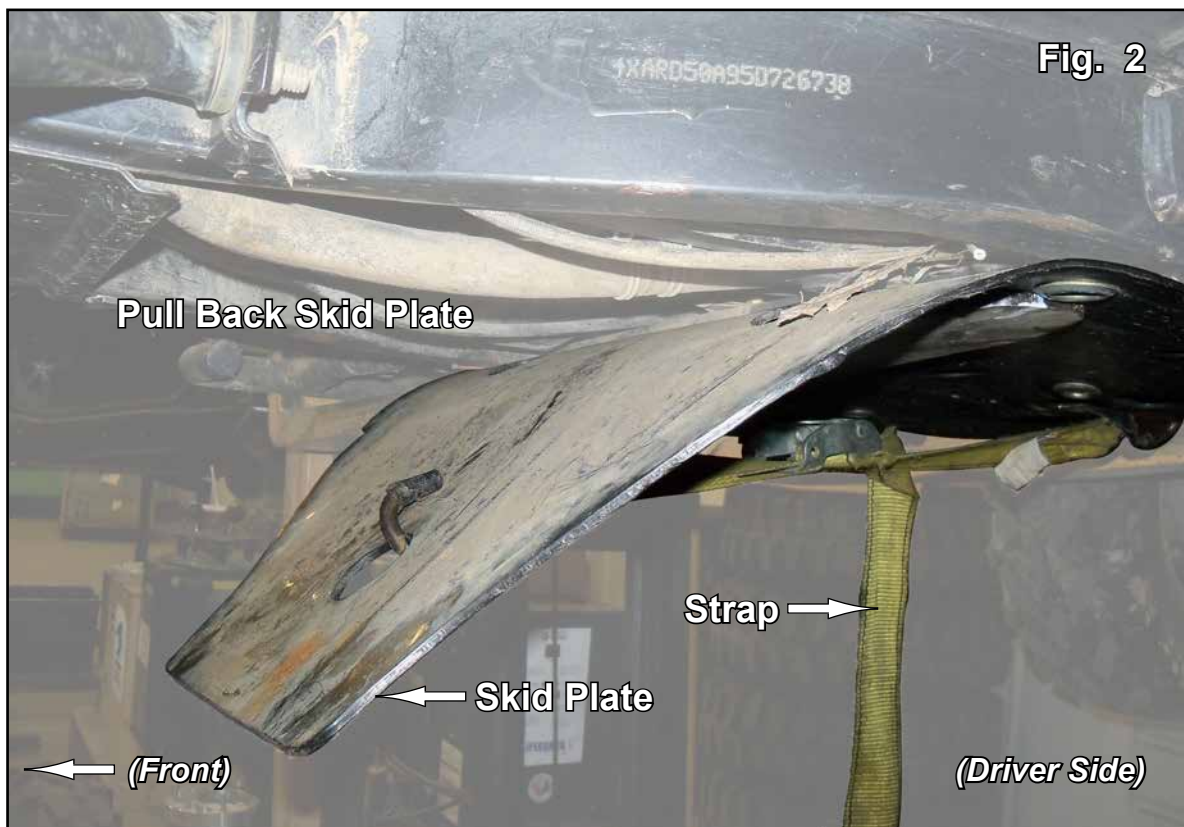
By purchasing and installing SuperATV[®] products, user agrees that should damages occur, SuperATV[®] will not be held responsible for loss of time, use, labor fees, replacement parts, or freight charges. SuperATV[®], nor any 3rd party, will not be held responsible for any direct, indirect, incidental, special, or consequential damages that result from any product purchased from SuperATV[®]. The total liability of seller to user for all damages, losses, and causes of action, if any, shall not exceed the total purchase price paid for the product that gave rise to the claim.

SuperATV[®] will warranty only parts provided by SuperATV[®]. Any damage or problems with OEM housings, bearings, seals, or other manufacturers' products will not be covered by SuperATV[®]. SuperATV[®] parts and products are not warranted if item was not installed properly, misused, or modified.

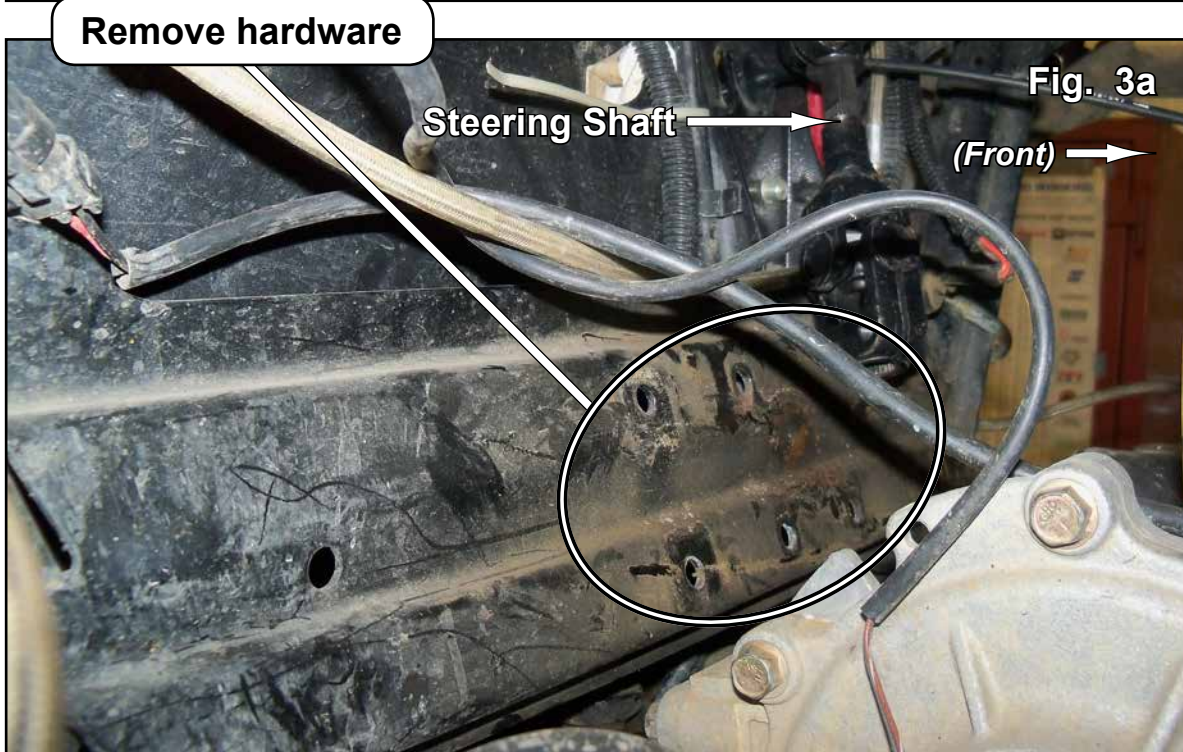
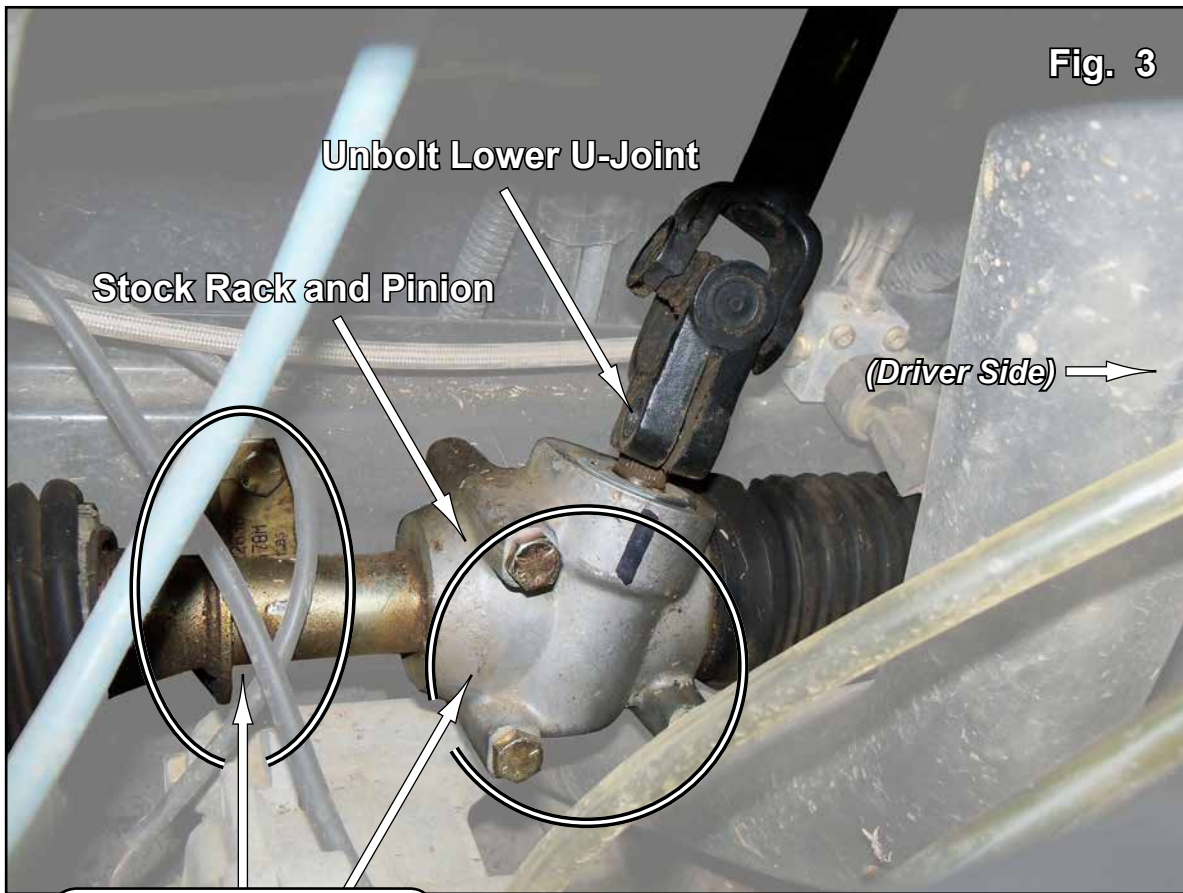
Removal: *Keep all hardware and components removed from machine.*

1. Raise front of vehicle and secure with jack stands. Remove Wheels.
 - Remove Tie Rods from Hubstruts and Rack and Pinion.
2. Remove Drive Shaft Floor Cover. See Fig. 1.
3. Use a ratchet type strap and pull Skid Plate back as shown in Fig. 2.
4. Remove hardware from Lower U-Joint. See Fig. 3.
5. Remove hardware from stock Rack and Pinion. See Figs. 3 - 3a.

**To access Rack and Pinion mounting hardware,
remove Drive Shaft Floor Cover**

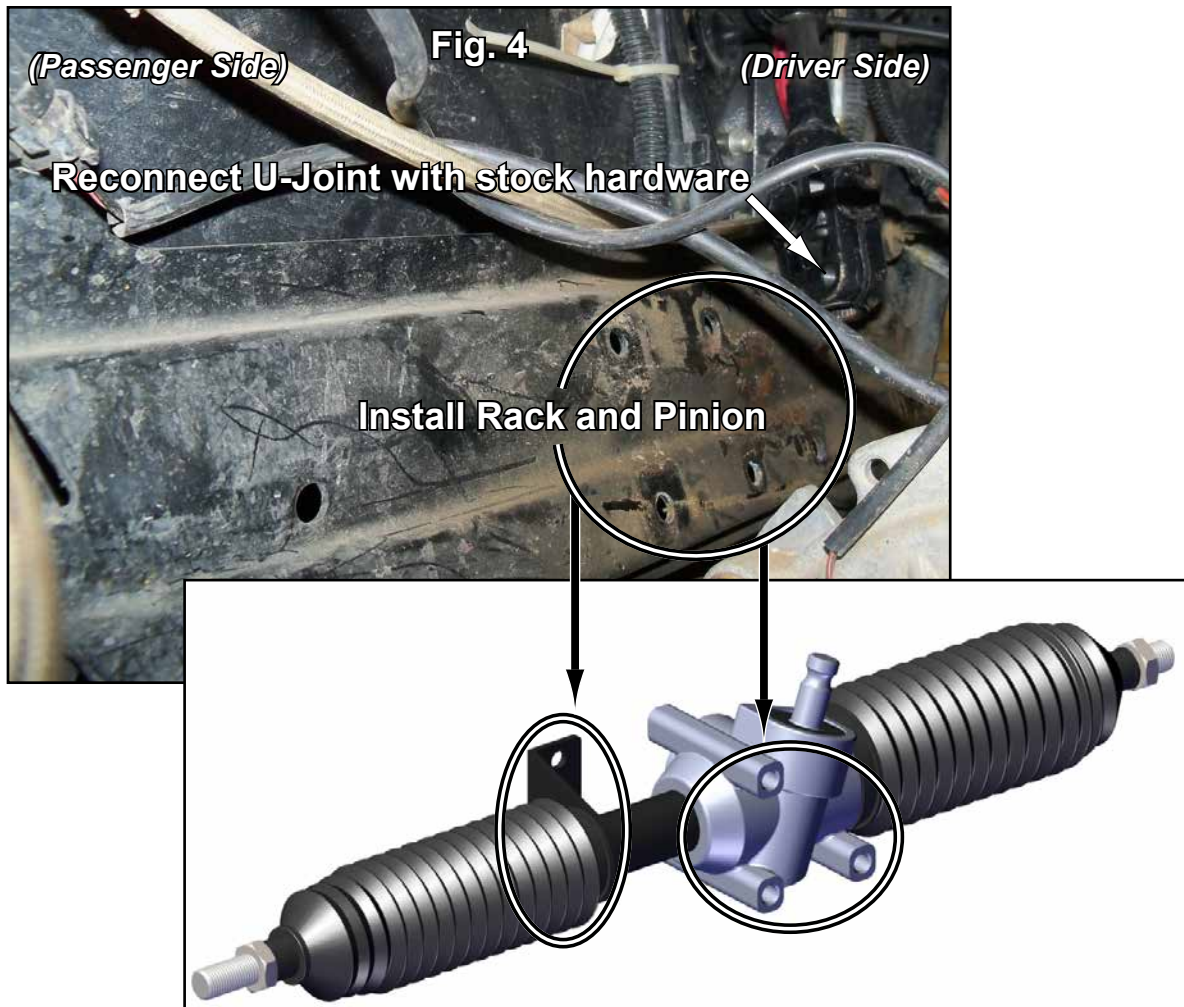


(Removal illustrations continued)



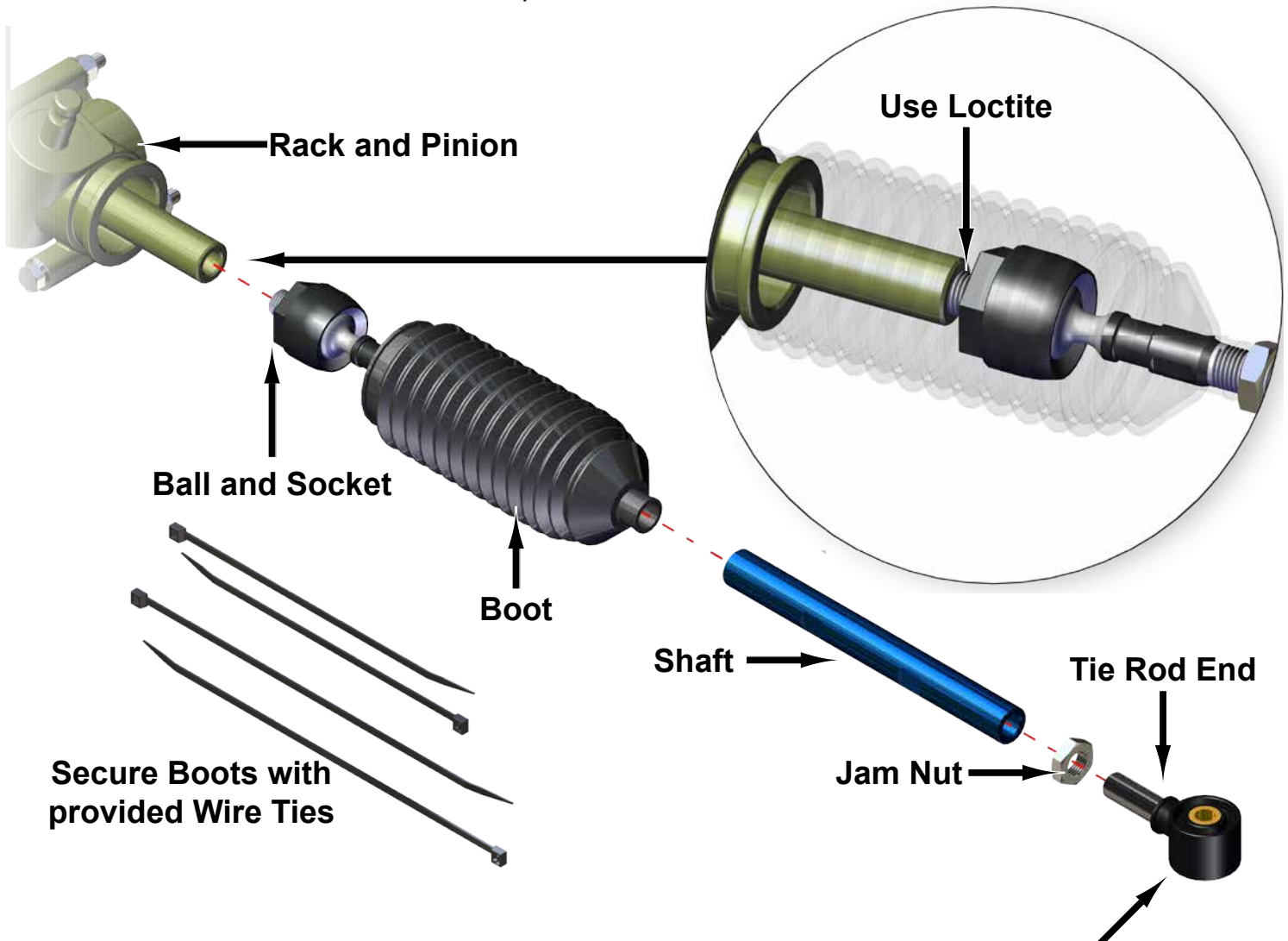
Rack and Pinion Installation: *Do not tighten hardware completely unless noted.*

1. Install Rack and Pinion to machine with stock or provided hardware. See Fig. 4.
 - Tighten hardware completely.
2. Reinstall Lower U-Joint to Rack and Pinion with stock hardware. See Fig. 4.
3. Proceed to "Tie Rod Installation".
4. Reinstall necessary components.
 - Before initial ride, set toe-in of vehicle.
 - After initial ride check to see that hardware remained tight.

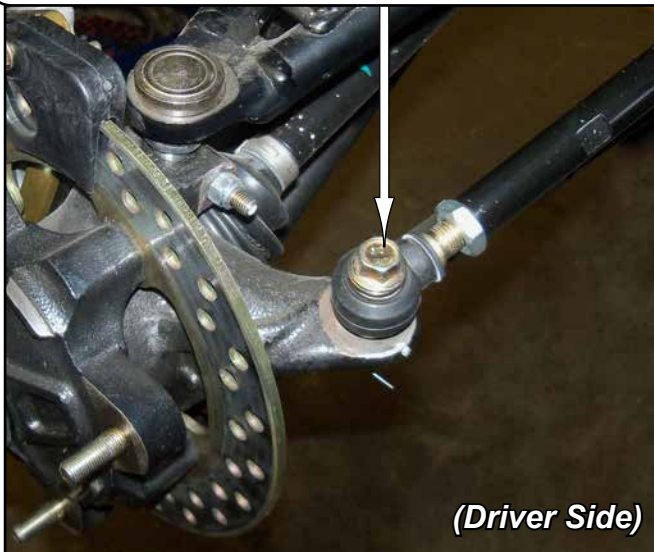


Tie Rod Installation:

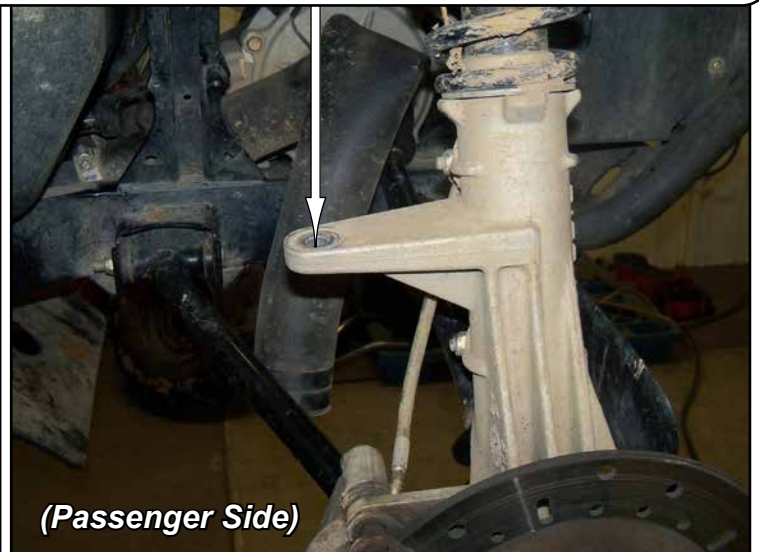
1. Install Ball and Sockets to Rack and Pinion if applicable; use Loctite when installing.
2. Install Shafts to Ball and Sockets.
3. Secure Tie Rod Ends to Hubstruts or Spindles with stock hardware.



Install to top of Hubstrut or Spindle depending on model with stock hardware



(Driver Side)



(Passenger Side)