



780 Professional Drive N. Shreveport, LA 71105 Phone (318)-524-2270 Fax (318)-524-2297

Thank You for Purchasing a High Lifter Portal Gear Lift Kit



Please check out our other product lines:

- ***Big Lifts***
 - ***Control Arms***
 - ***Trailing Arms***
 - ***Snorkels***
 - ***Radiator Relocation Kits***
- and many more...***



Follow Us:

-  **@HighLifterATV**
-  **@highlifter**
-  **@HighLifter**
-  **@highlifterinc**

Need Help? Contact Us

Mon-Fri 8am - 5pm CST

- **sales@highlifter.com**
- **800-699-0947**

IMPORTANT PRODUCT USE AND SAFETY INFORMATION / WARNINGS

This product is designed for use on ATVs and/or RUVs to lower the final drive gear ratio and increase ground clearance. Purchasers should be aware that use of this product may increase the frequency of required maintenance, part wear, and will raise the center of gravity on your ATV and/or RUV, increasing risk of roll-over, injury and death on all types of terrain. It is your responsibility to always inform other operators and passengers of this vehicle about the added risks with this product.

High Lifter's products are designed to best fit user's ATV/RUV under stock conditions. Adding, modifying, or fabricating any OEM or aftermarket parts will void warranty. High Lifter Products, products could interfere with other aftermarket accessories. If the user has aftermarket products on machine, contact High Lifter Products to verify that they will work together. Adding aftermarket suspension components and/or more aggressive tires can cause breakage of other OEM driveline components such as differentials, axles or drive shafts.

Riders should be advised that the handling characteristics of a taller ATV and/or RUV are different and require extra care when riding, particularly on the side of hills or off-camber situations. If you further raise the center of gravity by adding taller tires, heavy loads to racks or seats, or by any other means, the ATV and/or RUV must be operated with even more care, at slower speeds and on relatively flat ground. All turns should be done at a slow speed, even on level ground.

Operation of an ATV and/or RUV with or without modified suspension components, while or shortly after consuming alcohol or drugs, subjects the rider and passengers to the risk of serious bodily harm or possible death. This risk is compounded if the riders do not wear an approved helmets and other safety gear. High Lifter urges that all approved safety gear be worn when riding an ATV and/or RUV as a driver or passenger.

By purchasing and installing High Lifter Products, products, user agrees that should damages occur, High Lifter Products will not be held responsible for loss of time, use, labor fees, replacement parts, or freight charges. High Lifter Products will not be held responsible for any direct, indirect, incidental, special, or consequential damages that result from any product purchased from High Lifter Products. The total liability of seller to user for all damages, losses, and causes of action, shall not exceed the total purchase price paid for the product that gives rise to the claim.

Dealers and other Installers

You are responsible for informing your customer and end user of the information contained above and the increased potential hazards of operating an ATV and/or RUV equipped with modified suspension components. If you install any suspension modifying components, it is your responsibility to also install the warning label prominently in view of the driver and in prominent view of the driver and passenger on RUVs and multi-passenger ATVs. They should also be instructed to notify anyone operating the vehicle, as well as any passengers, that said vehicle is modified.

As discussed above, it is critically important that they be instructed in the need for slower speed operation, regardless of terrain, after this lift kit is installed.

The product is/will:

- Designed and intended for use on a UTV at slow speeds.
- Increase the center of gravity.
- Increase the turning radius.
- Increase the stopping distance when adding larger tires.
- Increase and accelerate wear of factory components including bushings, bearings, ball joints, and tie rod ends.
- We cannot guarantee fitment with other aftermarket accessories.

Safety Guidelines:

- Inspect all moving factory suspension components particularly ball joints, tie rod ends, control arm connections, and brakes prior to each ride and replace if worn.
- Inspect clearances with control arms and brake lines prior to each ride.
- Wheel spacers should not be used with a Portal Gear Kit.
- 14" or larger wheels must be used with the Portal Gear Kit. 12" wheels cannot be used.
- Jumping, high speeds, and quick maneuvering should be avoided.

Maintenance Information:

- Check gear oil in portal boxes following 25 hours of riding or sooner, depending on how you ride.
- Use 4 oz of SAE 80W-90 Gear Lubricant as needed in each portal box.
- Replace worn factory components including bushings, bearings, ball joints, brakes, and tie rod ends when they show wear.

Any vehicle equipped with a Portal Gear Kit must have the enclosed large format "Warning to Driver" decal installed on the inside of the windshield or on the vehicle's dash, within driver's view. The "Warning to Driver" decal is to act as a constant safety reminder for whoever may be operating the vehicle.

INSTALLING dealer: It is your responsibility to install the "Warning to Driver" decal and forward these installation instructions to the vehicle owner for review of warnings, product use, and maintenance information. Replacement Warning Decals are available FREE on request. These instructions are to be kept with the vehicle registration papers and owner's manual for the service life of the vehicle.

REFUSED Shipments/Order CANCELLATION:

Refused shipments are subject to a 20% restocking fee plus all associated freight costs. It is our goal to ship all orders in a timely manner. If a customer wishes to cancel an order (provided it is not a special order product), it is the responsibility of the customer to cancel the order prior to the product being shipped. If a customer cancels an order after product has been shipped, refused shipment, cancellation, or return will be subject to a 20% restocking fee and any freight charges incurred. For orders outside the United States, any fees associated with customs or duties are non-refundable.

DAMAGED Shipments:

All claims for damaged shipments must be made within 72 hours of delivery to the point of destination. Any damage to package should be noted with carrier at the time of delivery if possible. We will not be responsible for damage claims made over 72 hours after delivery to the point of destination.

INTRODUCTION

- Read these instructions carefully. It is recommended that a professional mechanic perform the installation. Care should be taken to follow all standard safety procedures.
- PRIOR to installation, a thorough inspection of the suspension should be made. Inspect the vehicles steering, driveline, and brake systems, paying close attention to the suspension link arms and bushings, anti-sway bars and bushings, tie rod ends, ball joints and wheel bearings.
- Also check the steering sector-to-frame and all suspension-to-frame attaching points for stress cracks. The overall vehicle must be in excellent working condition. Any worn, bent or broken parts should be repaired and/or replaced.

NOTE: Do not add or fabricate any components to gain additional suspension height.

NOTE: AFTER installation, another inspection should be made, checking for loose components or missing hardware. Inspect, again after eight (8) hours of operation. Remember, your lug nuts.

NOTE: A factory service manual should be on hand for reference. The manual will contain fastener torque specs, assembly techniques, and special tool requirements that are unique to this particular year and model vehicle.

TORQUE SPECIFICATIONS - Check all brackets & bolts to be sure everything is tight	
Box cap screws	8 ft lbs
Brake caliper bleeder screw	4 ft lbs
Brake line banjo bolt (caliper attachment)	50 ft lbs
Brake line banjo bolt (master cylinder attachment)	50 ft lbs
Brake rotor bolts	45 ft lbs
Caliper mounting bracket upper hole & box center hole bolts	90 ft lbs
Front & rear axle nut with shoulder	180 ft lbs
Front ball joint pinch bolts	50 ft lbs
Front Box to backing plate bolts (Upper & Lower)	105 ft lbs
Front & rear caliper mounting bolts	50 ft lbs
Front pinch bolt mounting bracket bolts	70 ft lbs
Lug nuts (cast rims)	90 ft lbs
Lug nuts (steel rims)	50 ft lbs
Oil drain & fill plugs	20 ft lbs
Radius bar bolt (Lower)	90 ft lbs
Radius bar bolt (Upper)	90 ft lbs
Rear Box to backing plate bolts (Lower)	105 ft lbs
Rear Box to backing plate bolts (Upper)	90 ft lbs
Spindle castle nut with washer	Min 120 ft lbs
Tie rod end to backing plate tie rod mount	90 ft lbs
Tie rod jam nut	15 ft lbs
Trailing arm to backing plate bolts (1/2")	90 ft lbs
Trailing arm to backing plate bolts (3/8")	40 ft lbs
Alignment, front toe tolerance 1/8" to 3/16" (3.2-4.8mm) Toe Out	

TOOLS REQUIRED

- Metric & standard socket assortments
- Metric & standard hex key/sockets
- Torque wrench
- Multi-purpose pliers
- Wire cutter/snips
- Mallet (Soft face hammer)
- Drift punch/pin
- **Water-resistant grease**
- **DOT 4 brake fluid**
- **80w90 gear oil**

FRONT INSTALLATION

1. Prepare vehicle, front
2. Removal of front brake calipers & hubs
3. Front backing plate assembly & install
4. Front portal box assembly
5. Install front portal box
6. Install front drive shaft nut with shoulder & portal box lid cap
7. Assemble brake rotor and wheel hubs
8. Install front brake rotor assembly
9. Adjust front camber
10. Replace & route front brake lines
11. Install front brake calipers
12. Install front tires and wheels

REAR INSTALLATION

13. Prepare vehicle, rear
14. Removal of rear brake calipers & hubs
15. Rear portal backing plate install
16. Rear portal box assembly & install
17. Adjust rear camber
18. Install rear drive shaft jam nut, spindle spacer, & portal box lid cap
19. Install rear brake rotor assembly
20. Install rear brake hanger bracket & caliper
21. Install radius bars

FINAL INSTALLATION

22. Bleed brakes
23. Fill portal boxes with oil
24. Install rear tires & wheels
25. Front alignment
26. Install warning decals

PARTS DIAGRAM



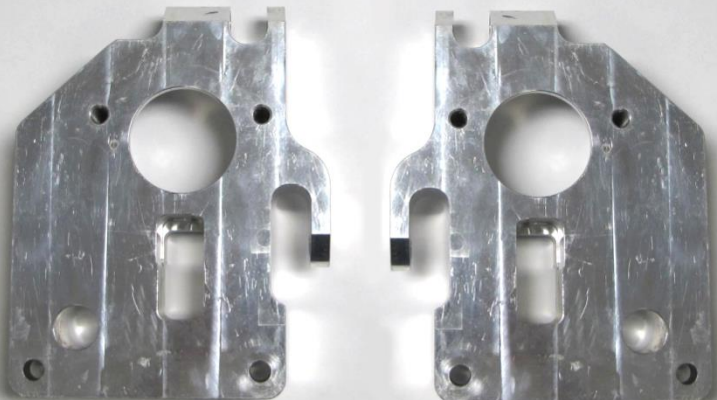
Front Left Backing Plate
(1ea) 82A-L

Front Right Backing Plate
(1ea) 82A-R



Front Left Ball Joint Bracket
(1ea) 82B-L

Front Right Ball Joint Bracket
(1ea) 82B-R



Rear Left Backing Plate
PGLC-BP-RZR1-RL (1ea)

Rear Right Backing Plate
PGLC-BP-RZR1-RR (1ea)

Front Shims
1/16" (2ea) 82N
1/8" (2ea) 82o



Portal Box
Left PGLC-BOX430-L-P
Left Front (1ea)
Right: PGLC-BOX430-R-P
Right Front (1ea)

Portal Box Cover Gasket
(4ea) PGLC-GSK-BOX430



Gears



Drive Gear (4ea)
PGLC-DG-POLARIS

Idler Gear (4ea)
PGLC-IDLERGEAR

Driven Gear (4ea)
PGLC-DRIVENGear



Box Cap (4ea)
PGLC-BOXCAP

Portal Cap Gasket
PGLC-GSK-CAP (4ea)

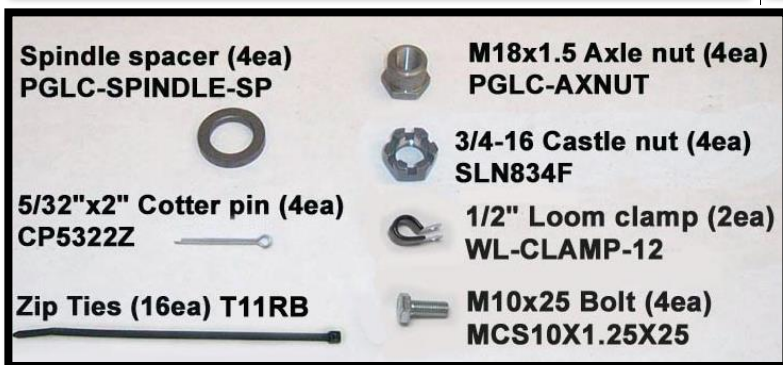
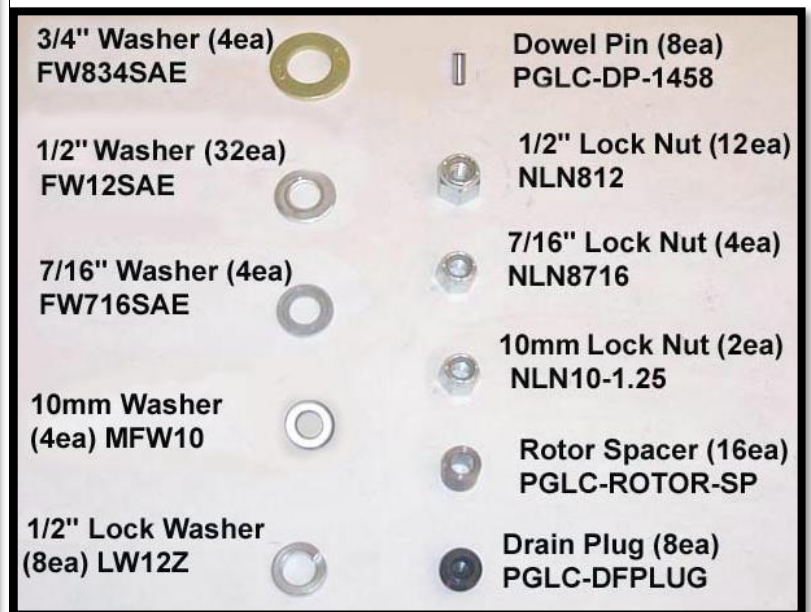
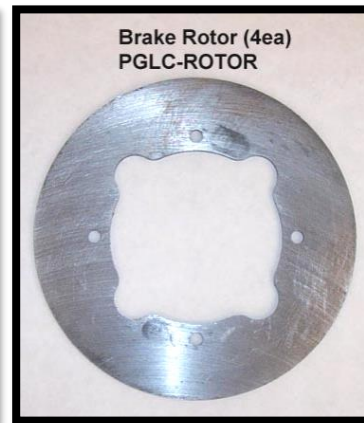
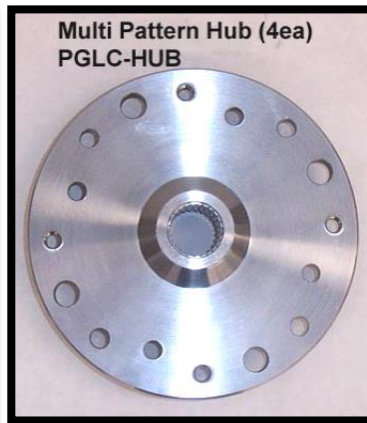
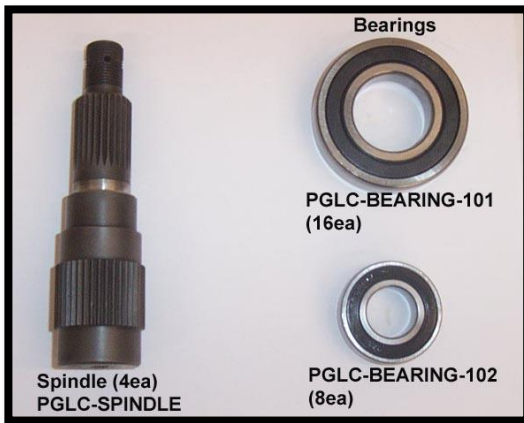


Input Seal (4ea)
PGLC-SEAL-INPUT



Output Seal (4ea)
PGLC-SEAL-OUTPUT





FRONT INSTALLATION

1. PREPARE VEHICLE

[THE FOLLOWING INSTRUCTIONS TAKE PLACE ON THE PASSENGER SIDE]

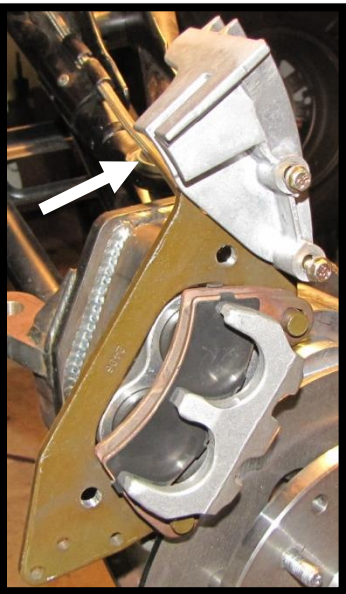
- a. Begin by loosening the lug nuts on both front tires.
- b. Raise the unit, using a suitable lifting device or procedure, until the front tires are off the ground.
- c. If using a floor jack with stands, chock the rear wheels to prevent the unit from rolling. If using jack stands, make sure the stands are placed under the frame and not the body.
- d. Make sure the unit is stable and secure. Remove wheel nuts and front wheels.

2. REMOVAL OF FRONT BRAKE CALIPER AND HUB

- a. Remove the upper & lower caliper mounting bolts (15mm).

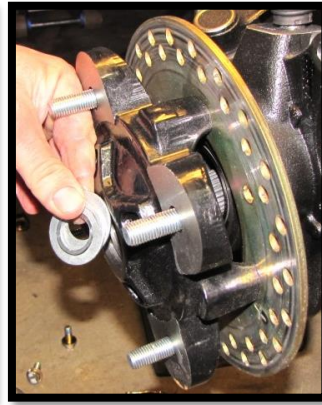
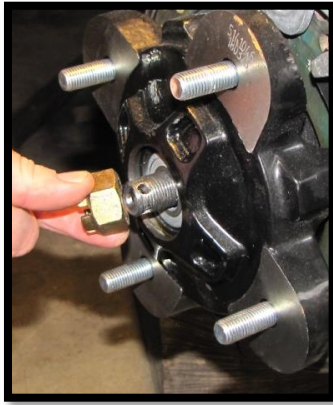
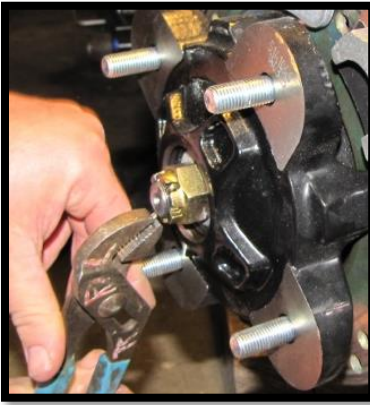


- b. Remove the front brake scraper from the caliper, it is no longer needed. (8mm)



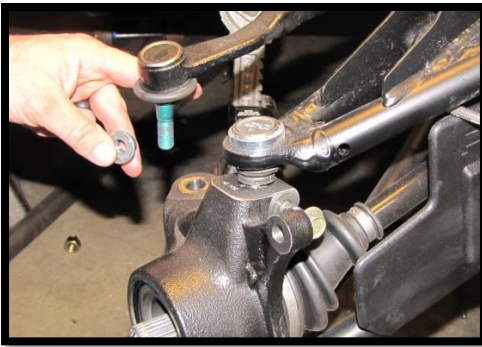
- c. It is not necessary to remove the brake line from the caliper at this time. Leave the brake hose attached to the caliper and hang the calipers out of the way. Take precautions to ensure the brake hose isn't stretched or pinched.
- d. Retain the factory bolts & nuts. They will be reused during the installation of the bolt-on portal boxes & mounting brackets.

- e. Remove the cotter pin and loosen the front wheel hub castle nut. (27mm) Remove the nut and cone washers, and then remove the hub.



- f. Remove the front brake rotor assembly.

- g. Disconnect the tie rod. (18mm)



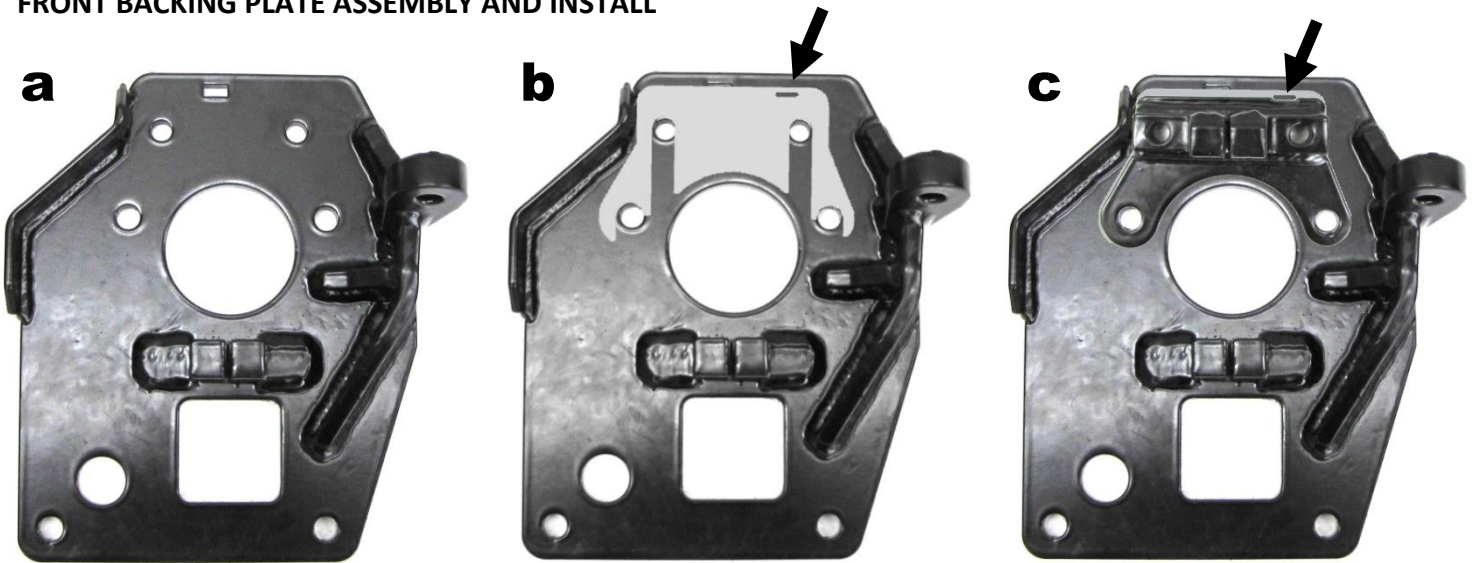
- h. Remove upper ball joint pinch bolt from the knuckle (15mm). Then remove the lower ball joint nut from the knuckle. (18mm)



- i. Remove the knuckle and retain the factory bolts & nuts. They will be re-used later in the install process.



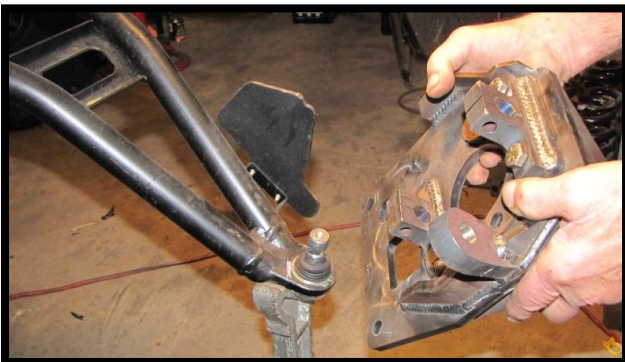
3. FRONT BACKING PLATE ASSEMBLY AND INSTALL



- a. Find the **front right backing plate (82A-R)**.
- b. Place a **1/8" front shim (82o)** to the upper backing plate and align it to the holes. This should set the camber to ZERO once the assembled portal box is installed. The oval shape cut out should be to the top right.
- c. Find the **front right upper ball joint mount bracket (82B-R)**. Place it on top of the shim and make sure all the holes are aligned. The small cut out should be to the top right.
- d. Insert **7/16 x 2-1/4" bolts** through the upper mounting bracket and shim slots, and then out through the front of backing plate. Slide (1) **7/16" washer** onto each bolt and loosely fasten the bolts with **7/16" lock nuts**. (5/8)[70 ft lbs]



- e. Properly position and insert the lower ball joint into the lower ball joint mounting bracket on the backing plate assembly.

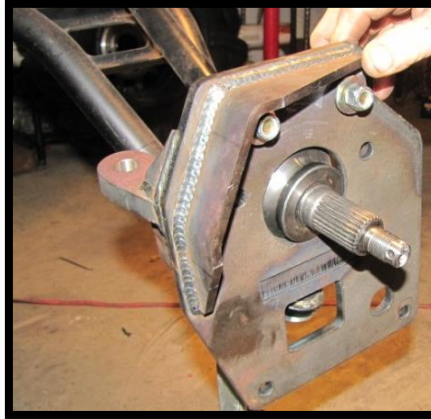
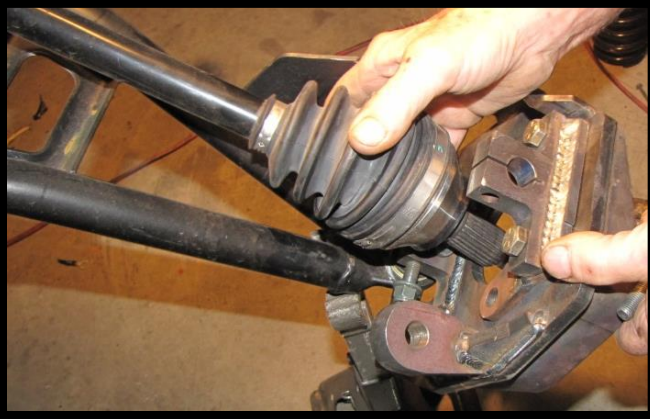


f. Secure with the factory bolt and nut. (18mm)[90 ft lbs]

Note: You may need to clean powder coating from the holes



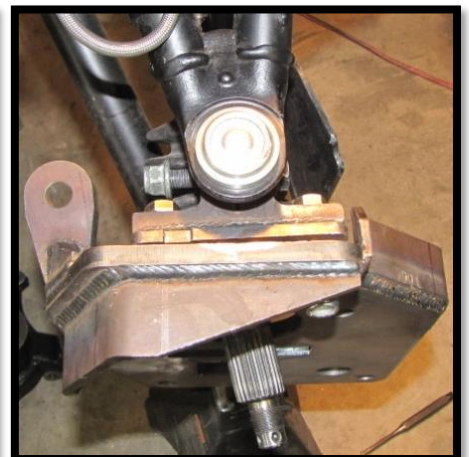
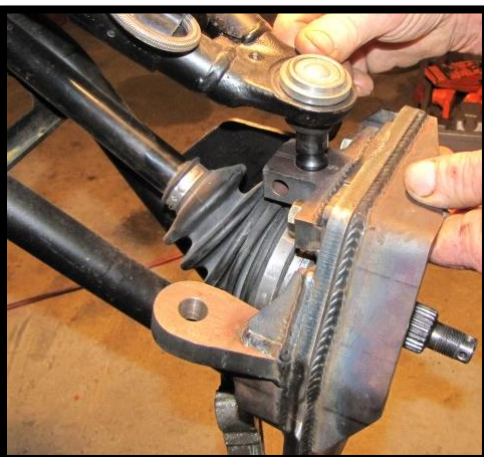
g. Insert the axle into the backing plate.



h. Place the upper ball joint into the portal box assembly's upper pinch bolt mount.

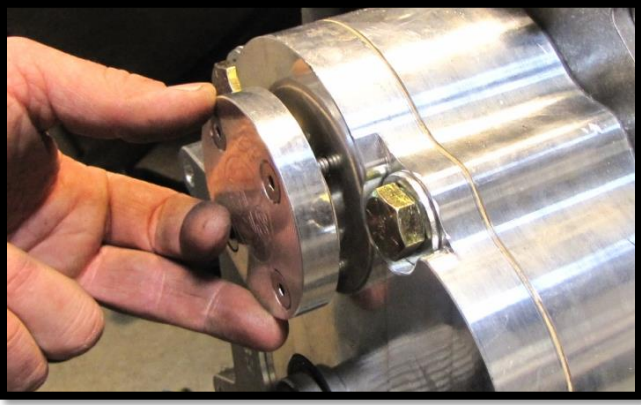
Note: You may need to clean powder coating from the holes.

- If you are using stock or non forward raked arms, then insert the factory bolt and fasten with the factory nut. Torque front ball joint pinch bolt (15mm)[50 ft lbs]
- If you are using forward raked arms, then insert the supplied **10mm x 1.25 x 55mm bolt** and fasten with a **10mm x 1.25 lock nut**. This bolt will provide more clearance. Torque front ball joint pinch bolt (15mm)[50 ft lbs]

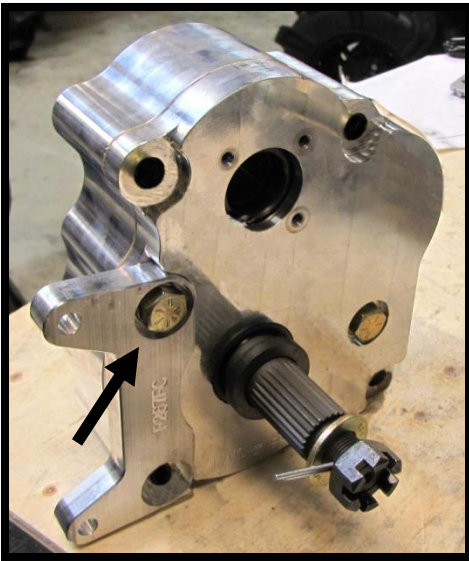


4. FRONT PORTAL BOX ASSEMBLY

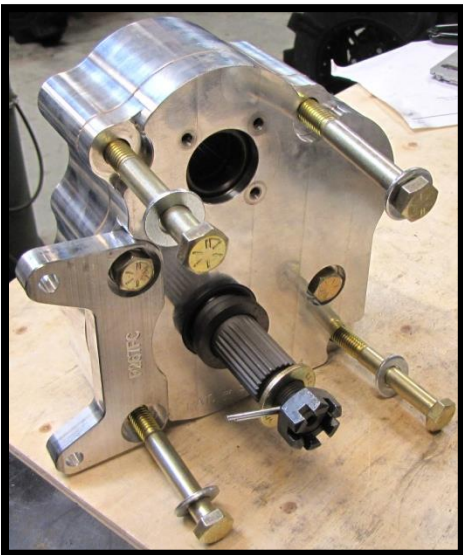
- a. Remove the (4) 8-32x1/2" screws & (1) cap and gasket from the lid of the portal box **PGLC-BOX430-R-P**.



- b. Using the pre-installed $\frac{1}{2}$ x 1 $\frac{1}{2}$ " bolt and 1/2" lock washer. Insert it through the upper hole of the caliper mounting bracket **PGLC-BCB-81G** and place it in the corresponding fitted section of the front portal box and fasten it tight. (3/4) [90 ft lbs]

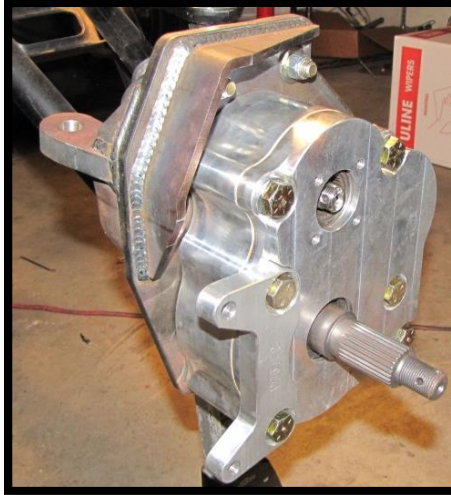


- c. Slide (1) 1/2" flat washer onto (4) $\frac{1}{2}$ x 4 $\frac{1}{2}$ " bolts. Insert the bolts through the remaining four holes in the front of portal box.

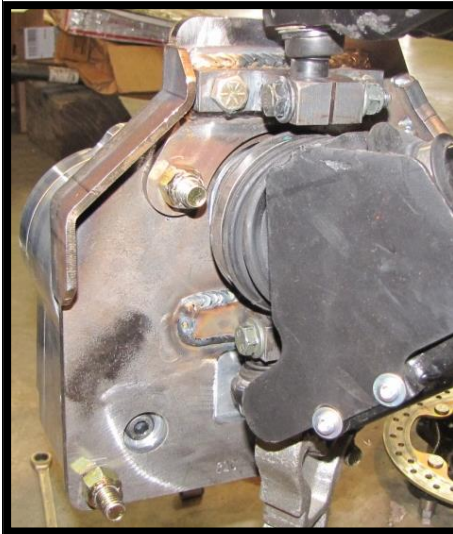
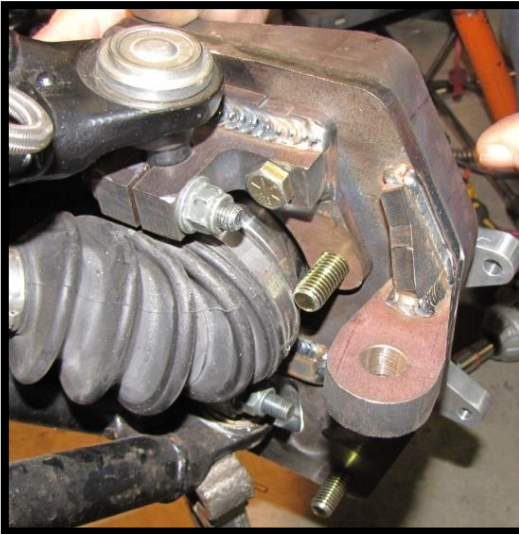


5. INSTALL FRONT PORTAL BOX

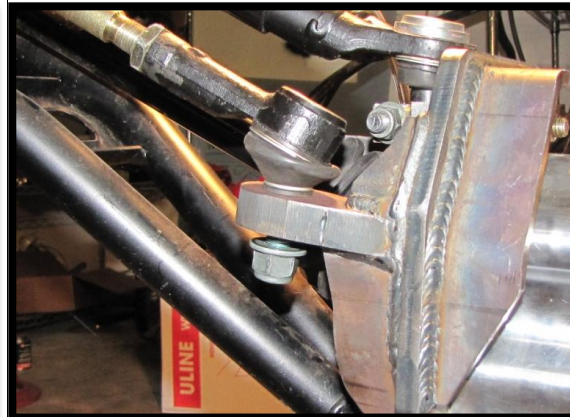
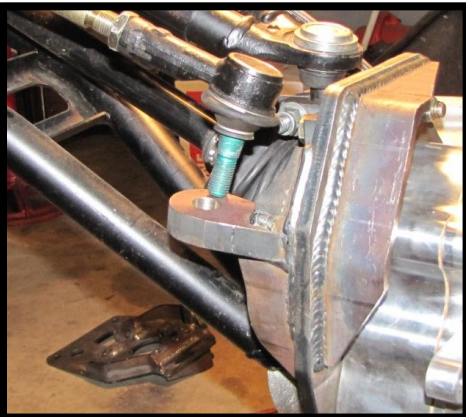
- Apply waterproof grease to the drive splines. Make sure to apply product all around the outer edge as well.
- Rotate the portal box assembly 'Up & In' as you guide the drive shaft axle through the inner drive gear.
- Insert the bolts through the corresponding holes in the backing plate.



- Loosely fasten the 4 ½" bolts with ½" flat washers and ½" lock nuts. Recheck all parts that were used and make sure everything fits correctly, and then go ahead and tighten and torque all 4 ½" bolts. (3/4)[105 ft lbs]

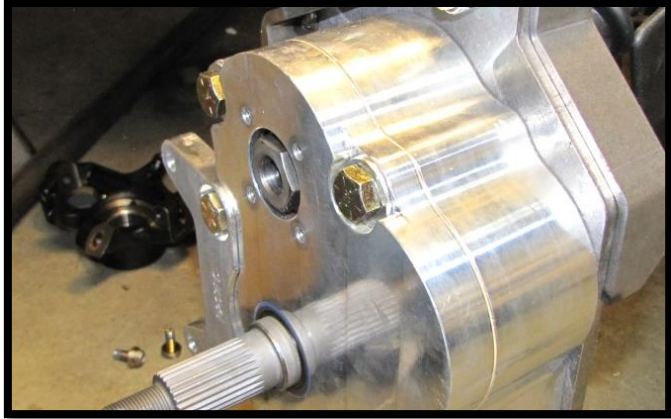
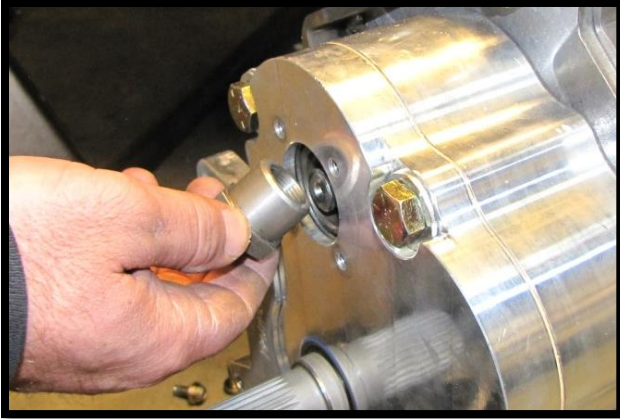


- Install the tie rod end in through the top of the portal box tie rod mount bracket. Fasten the tie rod end with the factory nut. (18mm)[90 ft lbs]

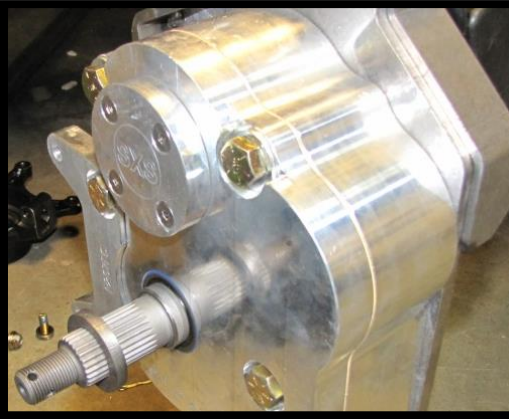
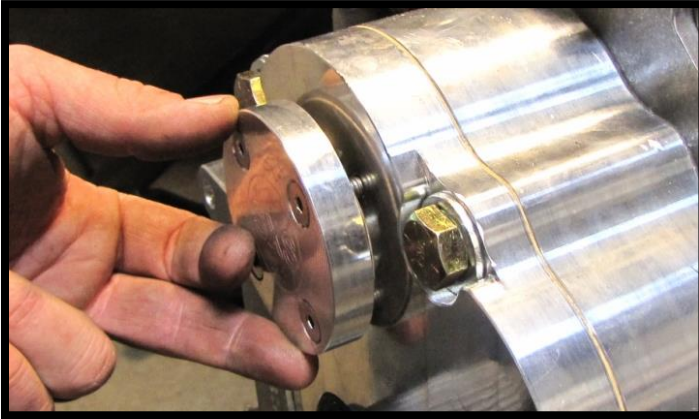


6. **INSTALL FRONT DRIVE SHAFT NUT WITH SHOULDER & PORTAL BOX LID CAP**

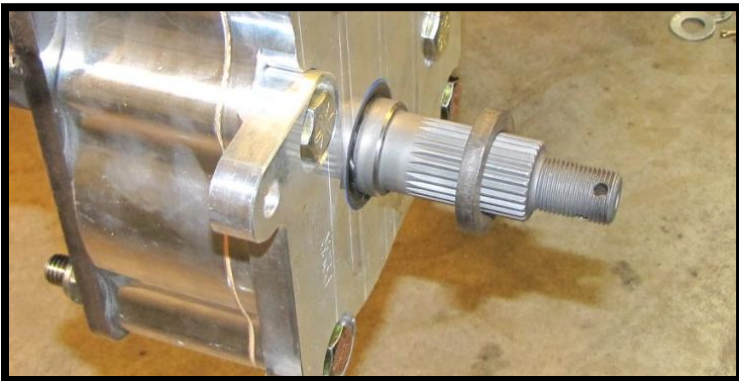
- a. With the portal box assembly in place, double check that the factory axle shaft is properly aligned into the drive gear of the portal box.
- b. Apply **LOCTITE 243 (Blue)** to the supplied M18 axle nut with shoulder **PGLC-AXNUT** and tighten & torque onto the drive shaft axle. (27mm)[180 ft lbs]



- c. Align the portal box lid cap & gasket. Use the **(4) 8-32x1/2" screws** and install to the portal box. [8 ft lbs]

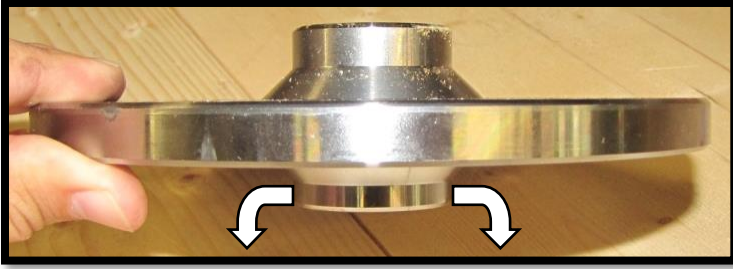


- d. Slide the spindle spacer **PGLC-SPINDLE-SP** onto the spindle shaft.

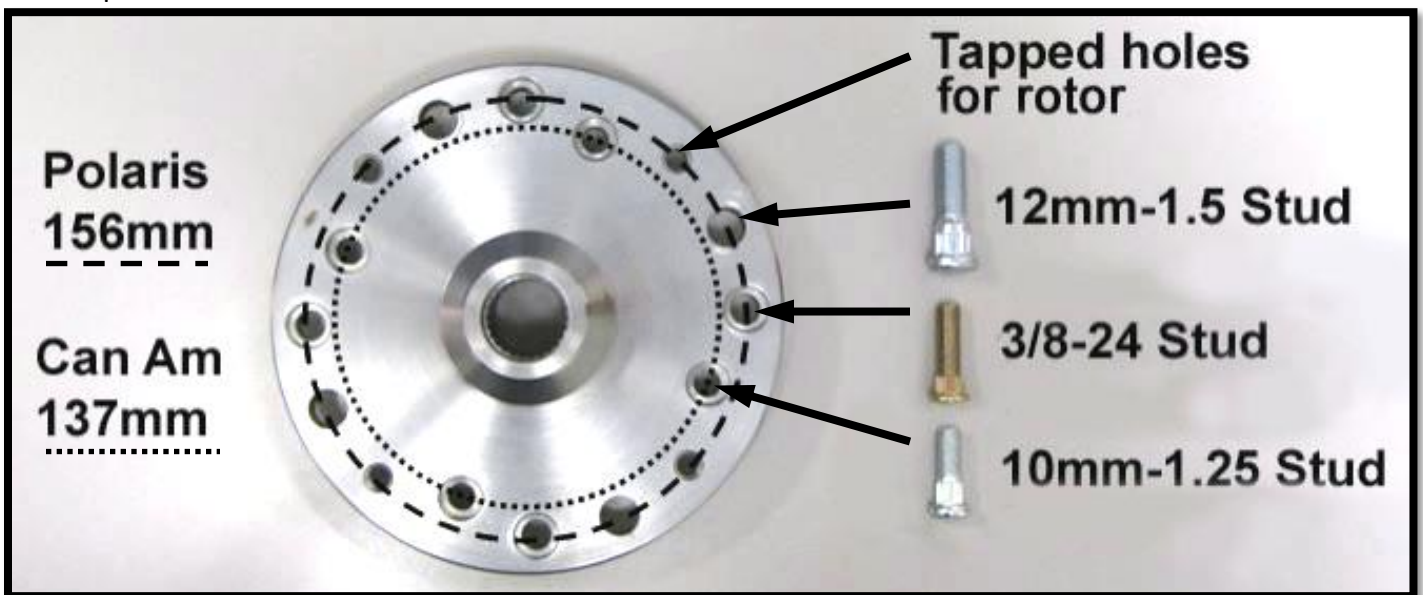


7. ASSEMBLE ALL BRAKE ROTORS & WHEEL HUBS

- a. Locate all (4) **PGLC-HUB** multi pattern hubs so they can all be assembled at the same time. They are designed to work with different bolt patterns.
- b. One side of the hub has a shorter lip than the other. This side will face away from the UTV when installed. Place this side face down on your working surface for the following steps.

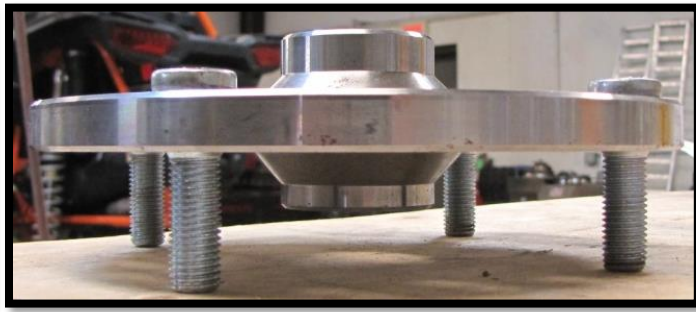
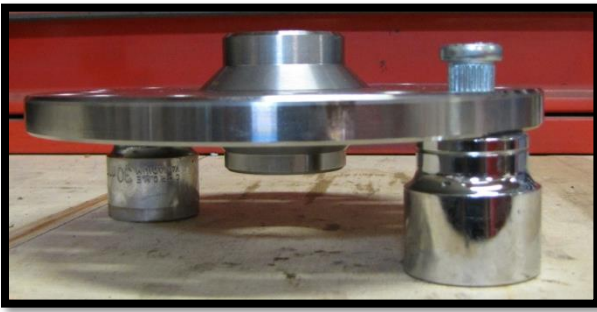


- c. With the shorter lip side faced down, find the bolt pattern that corresponds to your make and model with the provided studs **PGLC-WSTUD-102**.



- d. You can use a press to install the studs. You can also use large sockets as spacers to press them in. **Take care not to press the studs into the threaded tapped holes for the rotor!**

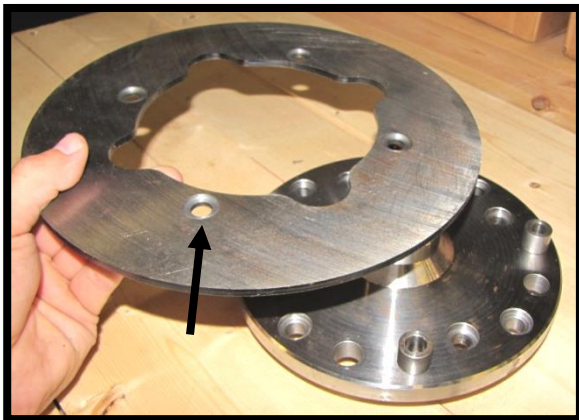




- e. Once the studs are pressed in, locate and place (4) ½" brake rotor spacers (**PGLC-ROTOR-SP**) over the tapped holes.



- f. Locate a brake rotor **PGLC-ROTOR**. The side with the counter bores should be facing up. Place the rotor on to the hub and line the holes up with the tapped holes.

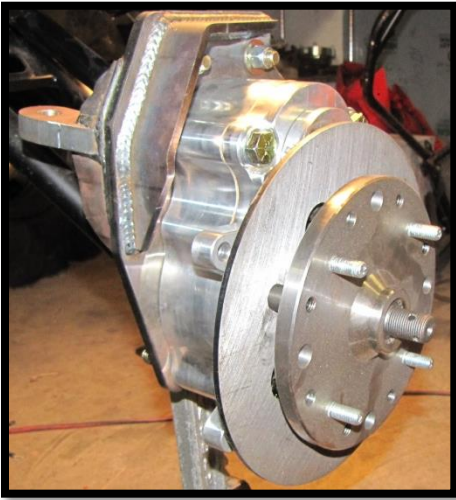


- g. Apply **LOCTITE (RED)** to (4) 3/8-16 x 1" button head bolts (**BSH381**). Insert the screws through the rotor, the spacers, and then into the hub. Tighten and torque. [45 ft lbs]



8. INSTALL FRONT BRAKE ROTOR ASSEMBLY

- a. Apply waterproof grease to the spindle splines. Then slide the brake rotor assembly onto the spindle shaft.

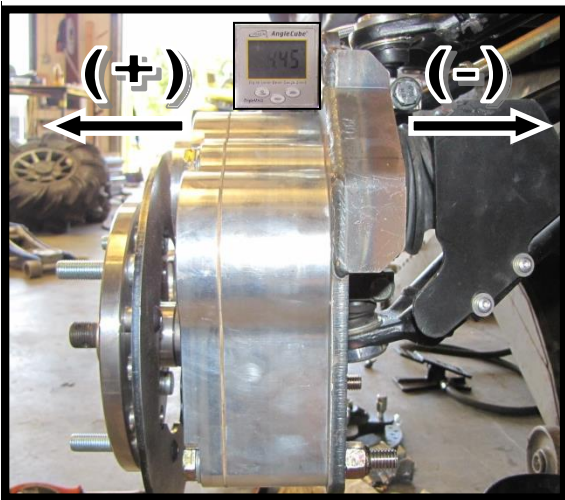


- a. Install the supplied **3/4 SAE grade 8 flat washer** & tighten the **3/4-16 slotted castle nut**. (1-1/16"-27mm) [Minimum 120 ft lbs] Tighten the slotted nut further if needed to align grooves with holes in spindle for cotter pin. Install the supplied large **cotter pin**. Both ends of the cotter pin must be folded.

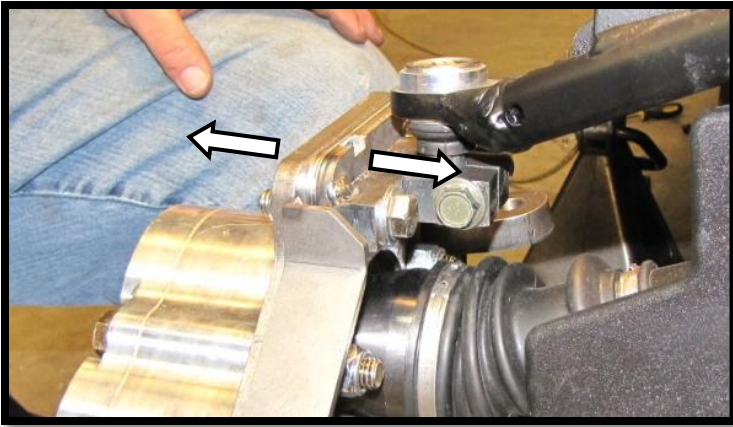


9. ADJUST FRONT CAMBER

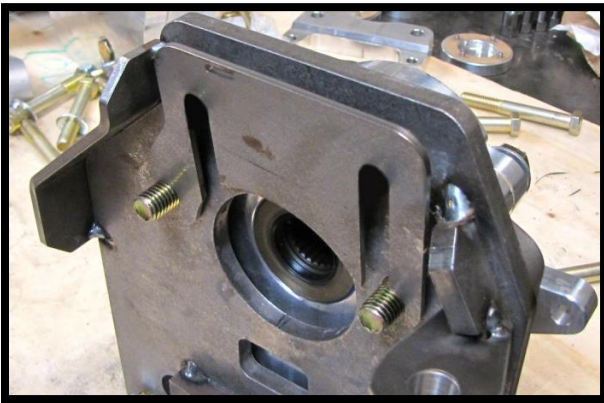
- a. When checking the camber, it is **necessary that the unit is leveled**. You can do this by properly positioning jack stands, bottle/floor jacks, and using a leveling tool. Be careful and make sure the unit is secure during this process.
- b. Now check the camber and determine if it is positive or negative. You want to set it as close as you can to ZERO. To do this, you can visually look down the side of your UTV and use an angle locator tool. If it is good, proceed to step #7. If not, then continue following these steps.



- c. If the camber is (-) you will need to add a shim. If the camber is (+) you will need to remove a shim. You are provided a 1/8" shim and a 1/16" shim for each portal to better achieve the correct angle. You can remove or use both of them as needed.
- d. To add or remove shims, you will need to completely disconnect the upper ball joint mount bracket from the portal box. You can leave the portal box attached to the lower ball joint and leave the mount bracket attached to the upper ball joint while you change shims in the next step.

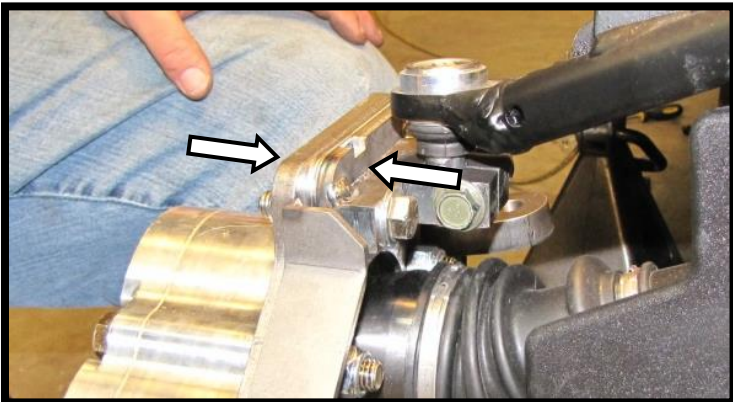


- e. Now that the backing plate is accessible, remove or add shims as needed.



- f. Reconnect the upper ball joint mount bracket to the portal box. Check the camber again. If it's correct, proceed to step #7. If not, repeat the previous step until you achieve the correct angle.

NOTE: You can purchase more shims if needed

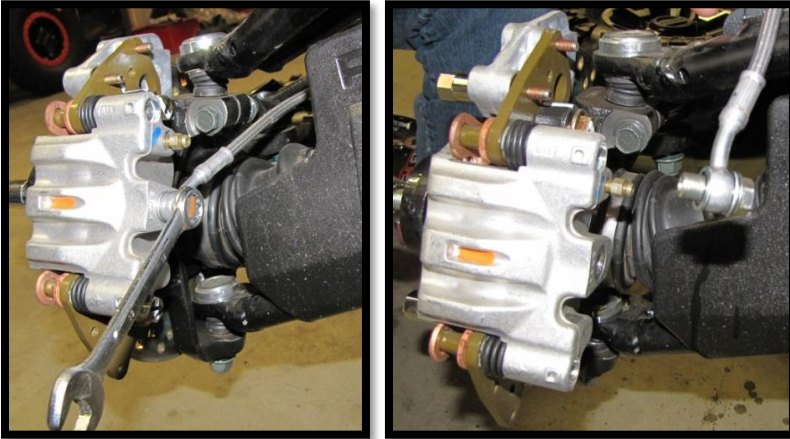


10. REPLACE & ROUTE FRONT BRAKE LINES

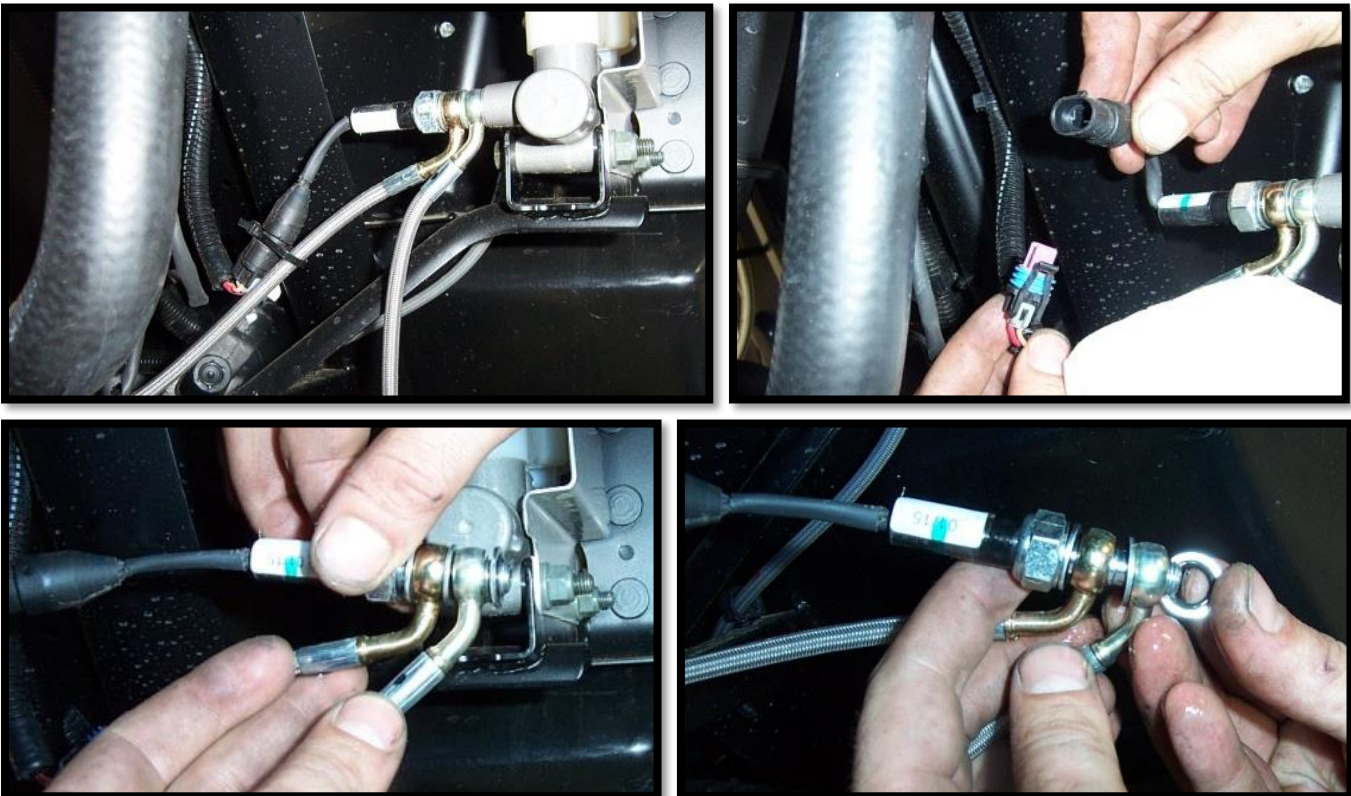
(PA) = Passenger Side (DR) = Driver Side

Here is what you will be doing in the following steps... Take the new extended length brake line and install it on the (PA) side. Take the factory (PA) side brake line and install it on the (DR) side. Remove the original (DR) side brake line and put it in a Zip-Loc bag and label it - (DR) side front. Put it where you can find it if needed. (It will not be reused during this installation).

- a. Disconnect both brake lines from the calipers and free the lines from any retaining clips or ties that hold them in place on the upper control arms and frame.



- b. Find the master cylinder on the (DR) side. First, unplug the connector. Then disconnect the banjo bolt and brake lines from the master cylinder. Make sure to save the washers from the factory that separate the two front lines.



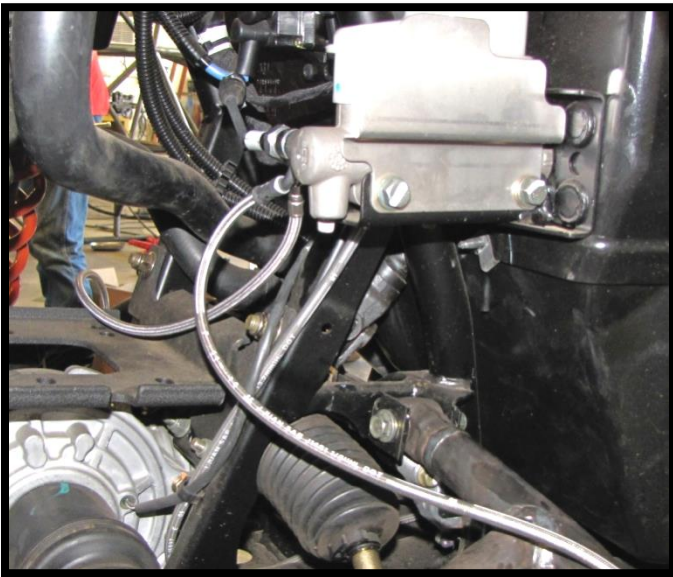
- c. Install the new longer brake line **PGLC-BRAKELINE** to the banjo bolt. Run the line back through the frame and to the (PA) side hub.



- d. Use the existing factory (PA) side brake line and install it to the banjo bolt. This is replacing the factory (DR) side brake line.



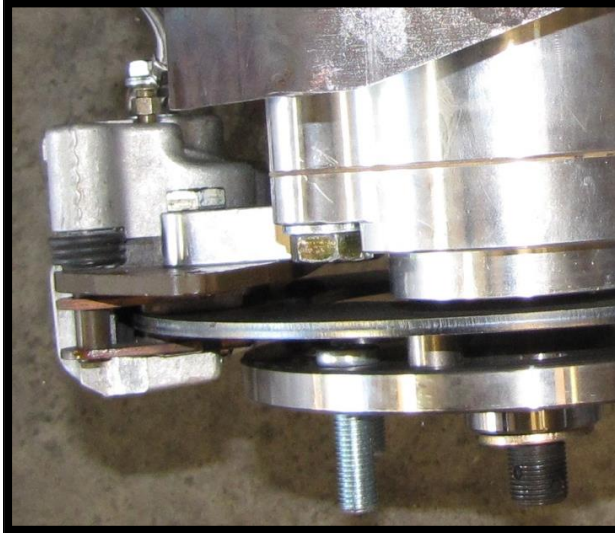
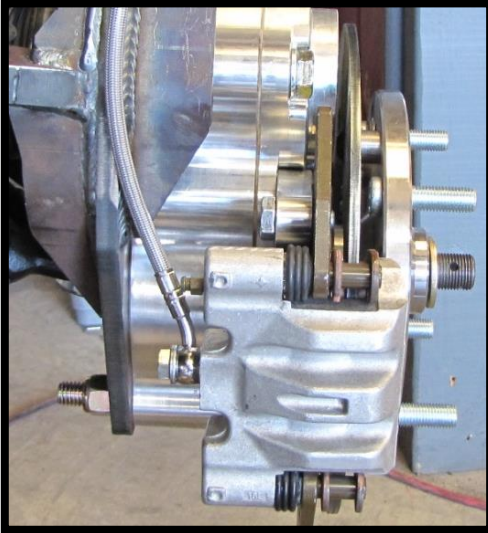
- e. The factory brake line banjo bolt should be in this sequence: **bolt, washer, (PA) extended length brake line, washer, (DR) brake line, and washer.**
- f. Tighten & torque banjo bolt to master cylinder. (12mm) [50 ft lbs]



11. INSTALL FRONT BRAKE CALIPERS

On the portal box, the brake caliper is relocated to the REAR. Because of this...

- The original (DR) side brake caliper will be used on the (PA) side.
- And the original (PA) side brake caliper will be used on the (DR) side.
- Loosely install the brake line banjo fitting onto the caliper taking care not to allow any debris to enter into the caliper. **NOTE: Remember, the bleed off valve always goes to the TOP of the caliper.**
- Install the caliper onto the portal box between the new caliper bracket and rotor. Use the factory mounting bolts. (15mm)[56 ft lbs] Position brake line banjo fitting clocked to 10 o'clock so it runs at the proper angle for maximum suspension travel. Tighten & torque to specifications. (13mm)[50 ft lbs]



- Use the factory A-arm clips and the supplied **8" zip ties** to reposition the brake lines.

12. INSTALL FRONT TIRES & WHEELS

Wheel Requirements with Portals:

- 14" or larger
 - 14" & 15" cannot exceed 4-1/2" backspacing
 - 16" & larger cannot exceed 5" backspacing
 - 14" factory wheels must run 2" spacers
- Install wheel lug nuts and securely tighten.
 - Remove all jacks, jack stands and other devices used to lift and hold the vehicle.
 - With the suspension supporting vehicle weight, torque the wheel lug nuts using an "X" tightening pattern.

Aluminum wheels = [90 ft lbs]

Steel wheels = [50 ft lbs]

WARNING: Retighten lug nuts at eight (8) hours after any wheel change or anytime lug nuts are loosened. Failure to do so could cause wheels to come off while the vehicle is in motion.

REAR INSTALLATION

13. PREPARE VEHICLE, REAR

[THE FOLLOWING INSTRUCTIONS TAKE PLACE ON THE PASSENGER SIDE]

- a. Begin by loosening the lug nuts on both rear tires. Raise the unit, using a suitable lifting device or procedure, until the rear wheels are off the ground. If using a floor jack with stands, chock the front wheels to prevent the unit from rolling. If using jack stands, make sure the stands are placed under the frame and not the body.
- b. Make sure the unit is stable and secure. Then remove wheel nuts, washers and rear wheels.

14. REMOVAL OF REAR BRAKE CALIPERS & HUBS

- a. Remove the brake line guide. Retain factory hardware.



- b. Remove the upper & lower caliper mounting bolts. (15mm)
- c. Remove the caliper from the rear hub. It is not necessary to remove the brake line from the caliper at this time. Leave the brake hose attached to the caliper and hang the calipers out of the way. Take precautions to ensure the brake hose isn't stretched or pinched.
- d. Remove the cotter pin and loosen the rear wheel hub castle nut (27mm). And then remove the nut and (2) cone washers from the rear wheel hub assembly.
- e. Remove the brake rotor assembly.
- f. Remove the bolts and nuts that attach the rear knuckle to the radius bars. Retain the factory bolts & nuts. They will be reused during the installation of the Portal Boxes & Mounting Brackets. (15mm)
- g. Remove the rear knuckle.

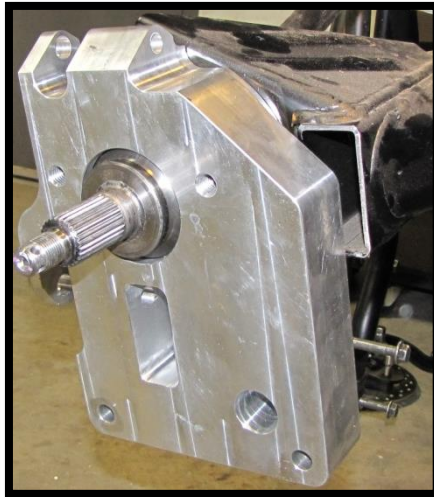


15. REAR PORTAL BACKING PLATE INSTALL

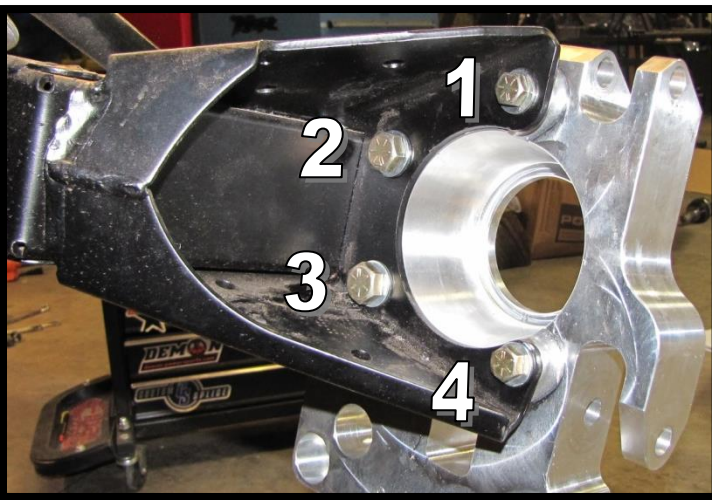
- a. Drill out the two right holes with a $\frac{1}{2}$ " drill bit so they can accommodate $\frac{1}{2}$ " bolts.



- b. Slide the axle shaft through the **rear right backing plate (PGLC-BP-RZR1AL4-RR)**, as shown below, and place it flush to the trailing arm.



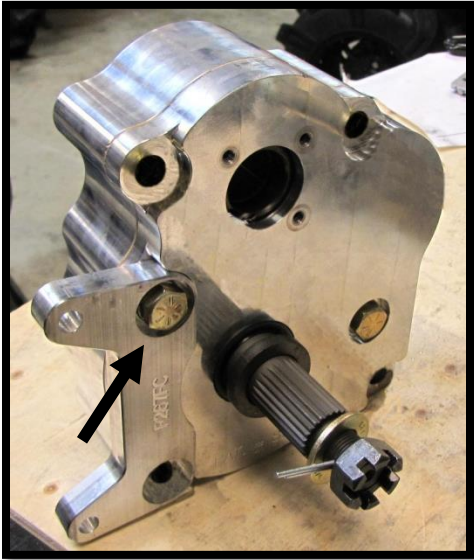
- c. Follow the steps below to install and fasten the backing plate to the trailing arm.



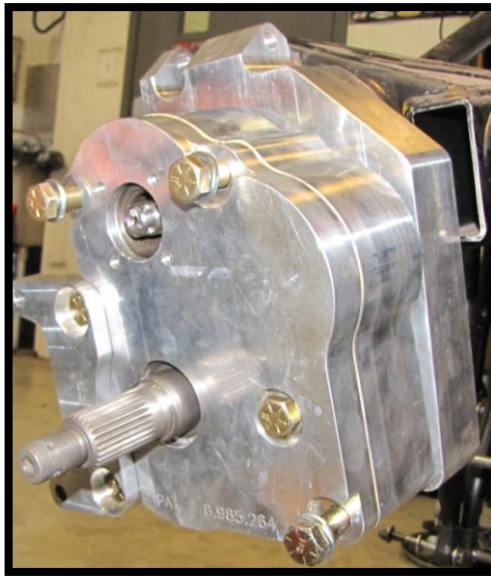
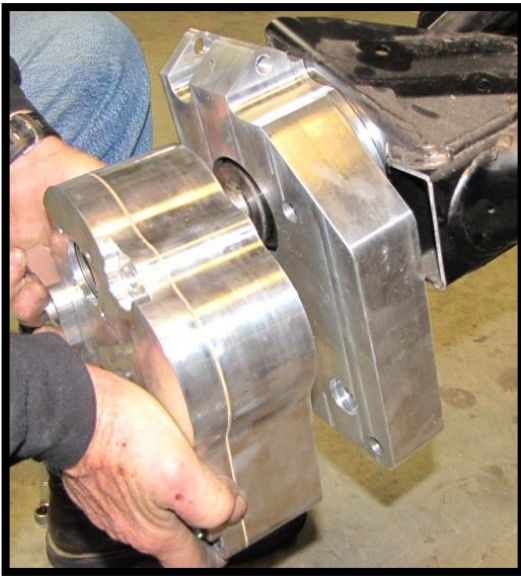
- 1) Insert a **$\frac{3}{8}$ x $1\frac{1}{4}$ " bolt** with a **10mm washer**. (9/16)[40 ft lbs]
- 2) Insert a **$\frac{1}{2}$ x $1\frac{1}{4}$ " bolt** with a **$\frac{1}{2}$ " washer**. (3/4)[90 ft lbs]
- 3) Insert a **$\frac{1}{2}$ x $1\frac{1}{4}$ " bolt** with a **$\frac{1}{2}$ " washer**. (3/4)[90 ft lbs]
- 4) Insert a **$\frac{3}{8}$ x $1\frac{1}{4}$ " bolt** with a **10mm washer**. (9/16)[40 ft lbs]

16. INSTALL REAR PORTAL BOX ASSEMBLY

- a. Using the pre-installed $\frac{1}{2}$ x 1 $\frac{1}{2}$ " **bolt** and **1/2" lock washer**. Insert it through the upper hole of the caliper mounting bracket **PGLC-BCB-81G** and place it in the corresponding fitted section of the front portal box and fasten it tight. (3/4) [90 ft lbs]



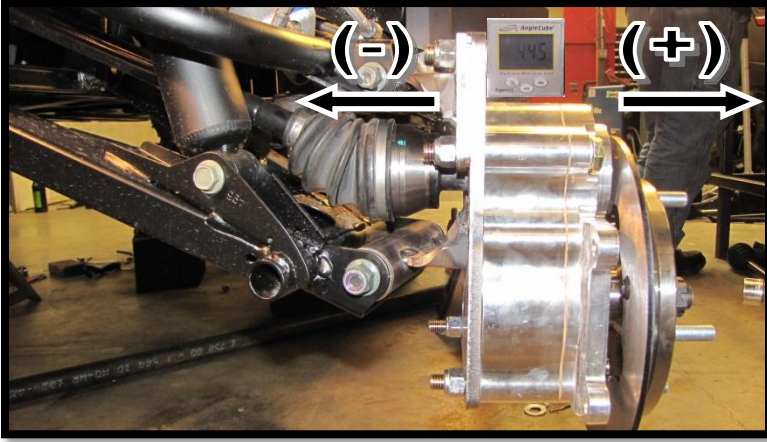
- b. Apply waterproof grease to the axle drive splines. Make sure to apply product all around the outer edge as well. Rotate the portal box assembly 'Up & In' as you guide the drive shaft axle through the inner drive gear.



- 1) Slide a single **1/2" flat washer** onto (2) $\frac{1}{2}$ x 4" **bolts**. Insert the bolts through the top two holes of the rear portal box and fasten to the backing plate. (3/4)[90 ft lbs]
- 2) Slide a single **1/2" flat washer** onto (2) $\frac{1}{2}$ x 4 **3/4" bolts**. Insert the bolts through the bottom two holes of the rear portal box and out through the backing plate. Slide a $\frac{1}{2}$ " **flat washer** onto each bolt end and loosely fasten each bolt with a $\frac{1}{2}$ " **lock nut**. (3/4)[105 ft lbs]

17. ADJUST REAR CAMBER

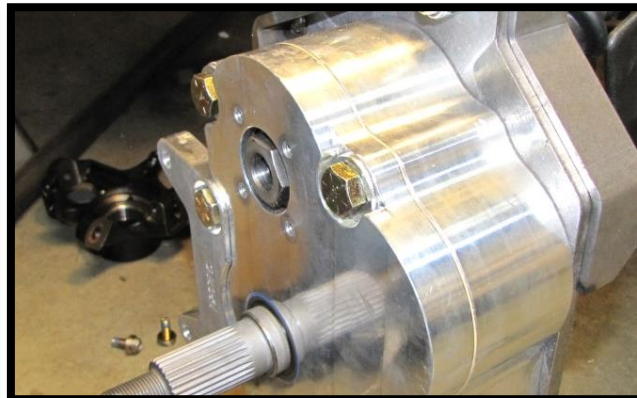
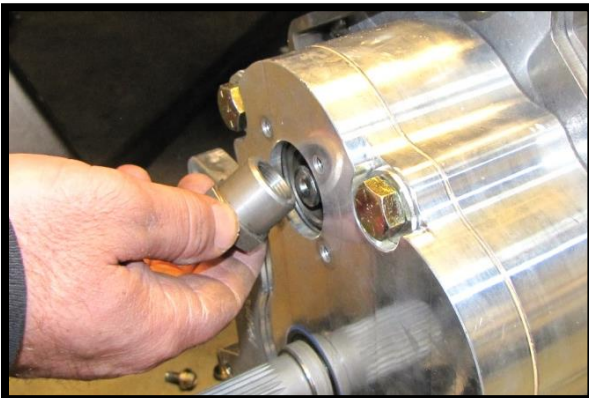
- a. When checking the camber, it is **necessary that the unit is leveled**. You can do this by properly positioning jack stands, bottle/floor jacks, and using a leveling tool. Please be careful and make sure the unit is secure during this process.
- b. Now check the camber and determine if it is positive or negative. You want to set it to ZERO. To do this, you can visually look down the side of your UTV and use an angle locator tool. If it is good, proceed to step #19. If not, then continue following these steps.



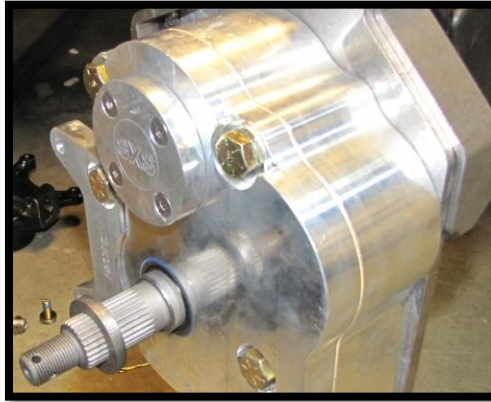
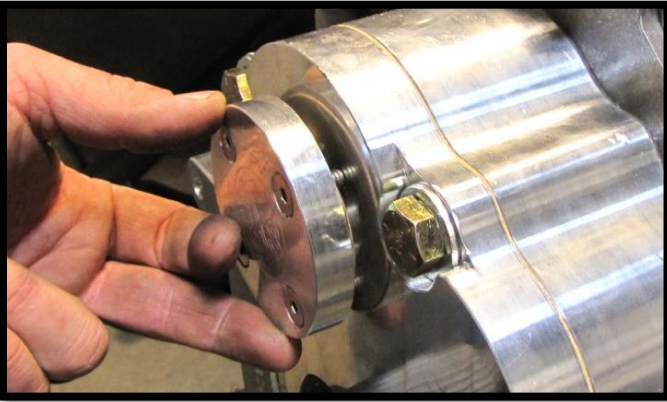
- c. If the camber is (-) you will need to add a shim. If the camber is (+) you will need to remove a shim. You are provided a 1/8" shim and a 1/16" shim for each portal to better achieve the correct angle. You can remove or use both of them as needed.
- d. Loosen the nuts on the upper collar mount bracket, but do not remove them. You can simply slide the extra shims in and out.
- e. Check the camber again. If it's correct, proceed to step #21. If not, repeat the previous step until you achieve the correct angle. **NOTE: You can purchase more shims if needed**

18. INSTALL REAR DRIVE SHAFT NUT WITH SHOULDER & PORTAL BOX LID CAP

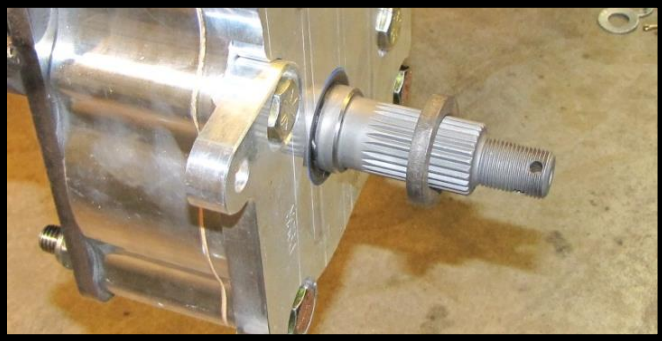
- a. With the portal box assembly in place, double check that the factory axle shaft is properly aligned into the drive gear of the portal box.
- b. Apply **LOCTITE 243 (Blue)** to the supplied M18 machined nut with shoulder **PGLC-AXNUT** and tighten & torque onto the drive shaft axle. (27mm)[180 ft lbs]



c. Align the portal box lid cap & gasket. Use the **(4) 8-32x1/2" screws** and install to the portal box. [8 ft lbs]



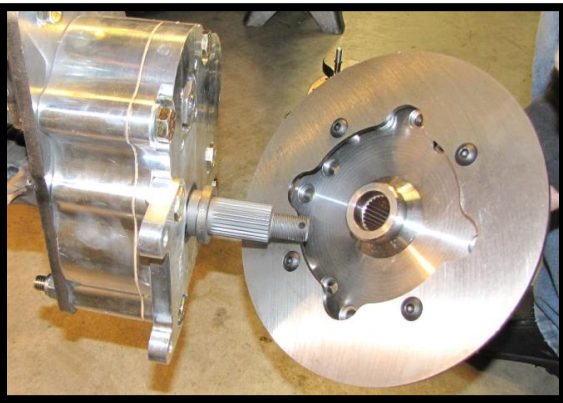
d. Slide the spindle spacer **PGLC-SPINDLE-SP** onto the spindle shaft.



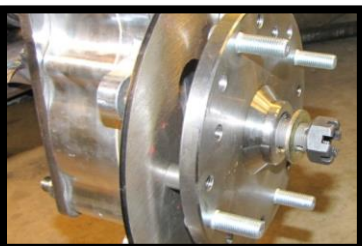
19. INSTALL REAR BRAKE ROTOR ASSEMBLY

b. Apply water-resistant grease to drive shaft axle splines.

c. Locate the wheel hub and brake rotor assembly and slide it onto the spindle shaft. If you haven't already assembled a hub and rotor, go complete step #8 and then come back.



d. Install supplied **3/4 SAE grade 8 flat washer** and tighten the **3/4-16 castle nut**. (1-1/16" - 27mm)[Minimum 120 ft lbs]. Tighten the slotted nut further if needed to align grooves with holes in spindle for cotter pin. Then install supplied large **cotter pin**. Both ends of the cotter pin must be folded.

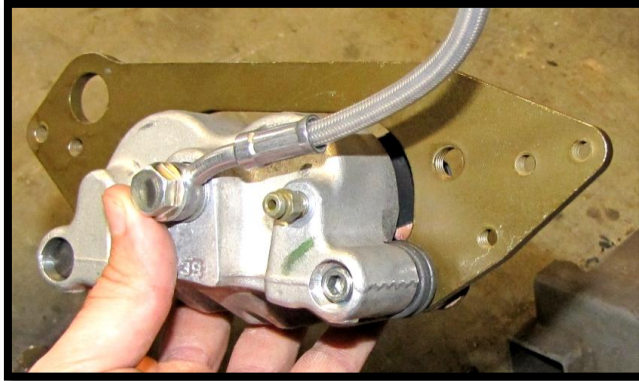


20. INSTALL REAR BRAKE HANGER BRACKET AND CALIPER

- a. Remove the factory rear brake caliper hanger bracket from the rear brake caliper.

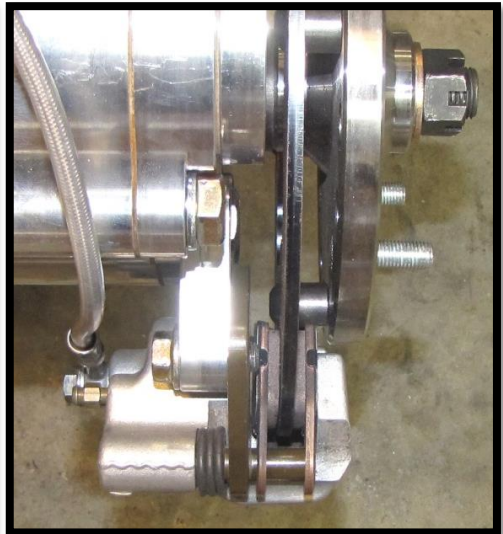
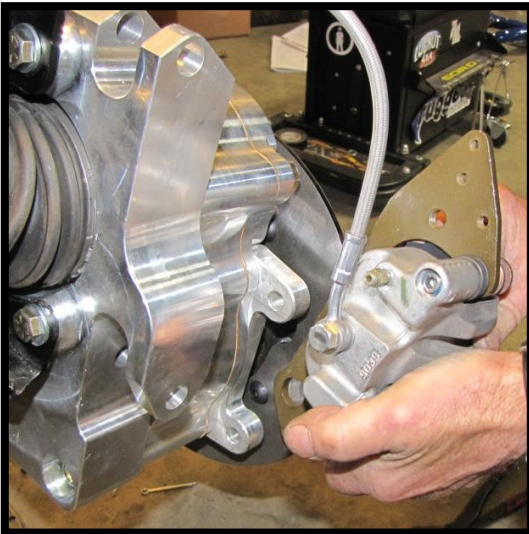


- b. Find the new rear brake caliper hanger bracket **PGLC-BCB-1912496** and insert it into the brake caliper.

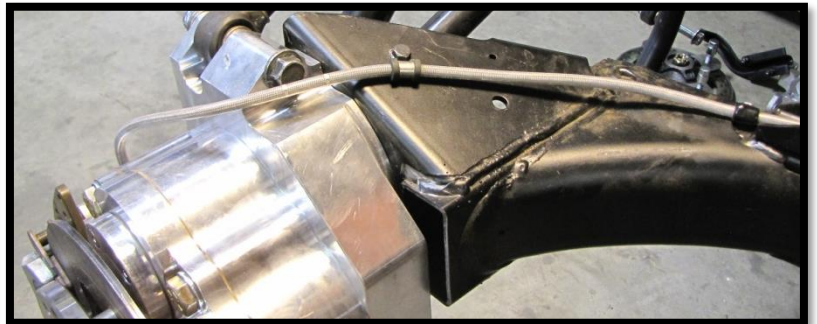


- c. Install the caliper onto the portal box between the new caliper bracket and rotor. Use the supplied **M10X1.25X25 bolts**. Position brake line banjo fitting clocked to 10 o'clock so it runs at the proper angle for maximum suspension travel. Tighten & torque to specifications. (15mm) [50 ft lbs]

NOTE: Remember, the bleed off valve always goes to the TOP of the caliper.

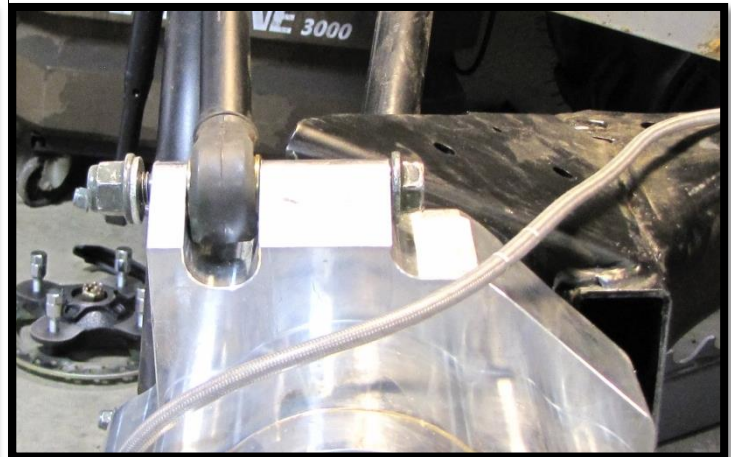
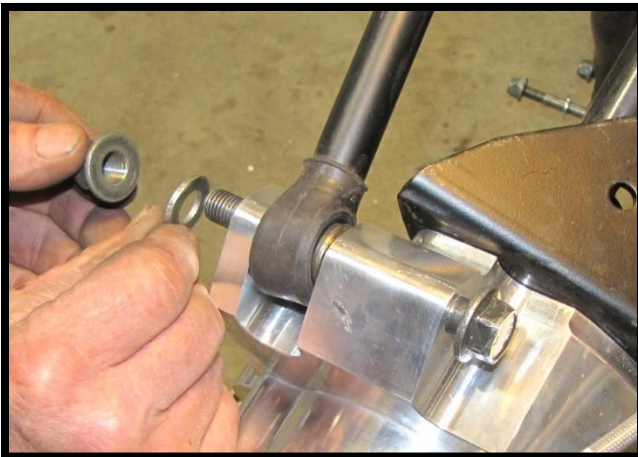


- d. Next attach the remaining brake line slack to the trailing arm. Use the provided ½" loom clamp **WL-CLAMP-12** and then reuse the factory hardware from brake line guide to reattach to the factory hole in the arm.

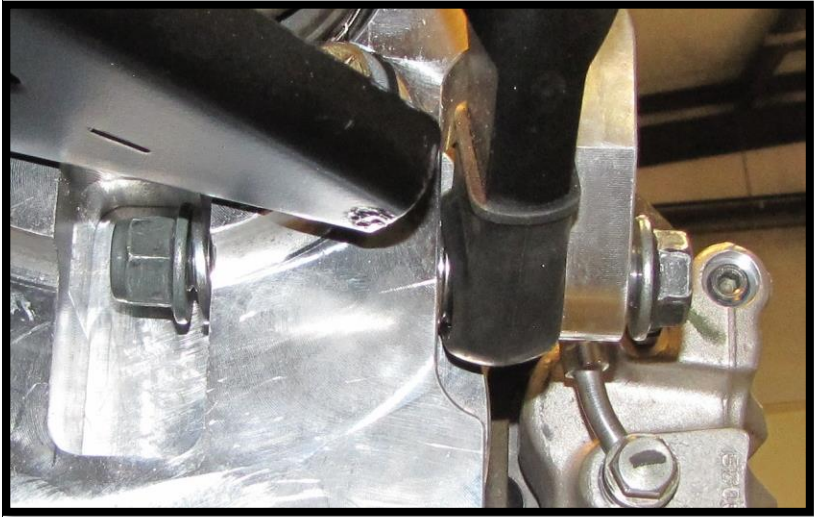
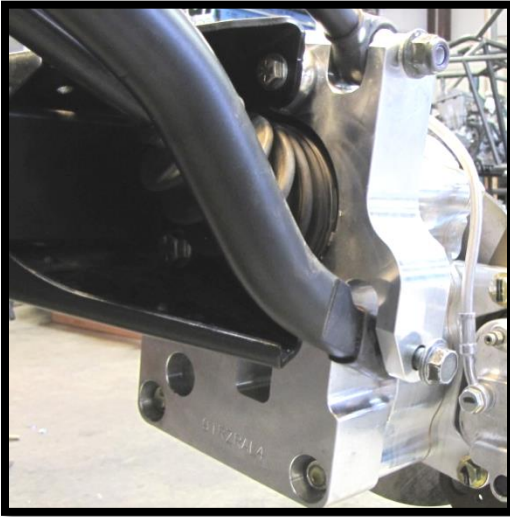


21. INSTALL RADIUS BARS

- a. Reattach the upper radius bar using the factory washer and lock nut. (18mm)[90 ft lbs]



- b. Reattach the lower radius bar using the factory washer and lock nut. (18mm)[90 ft lbs]

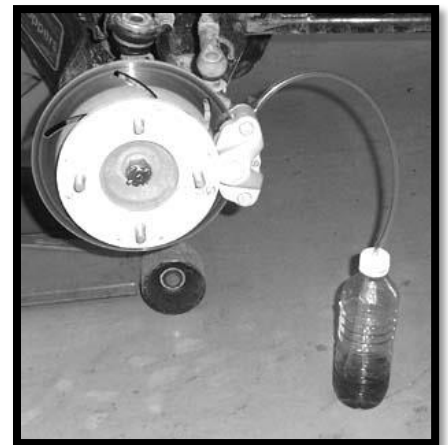


22. BLEED BRAKES

NOTE: When bleeding the brakes, start with the farthest caliper from the master cylinder.

CAUTION: ALWAYS wear eye protection like safety glasses. Brake fluid will damage finished surfaces. Do not allow brake fluid to come in contact with finished surfaces.

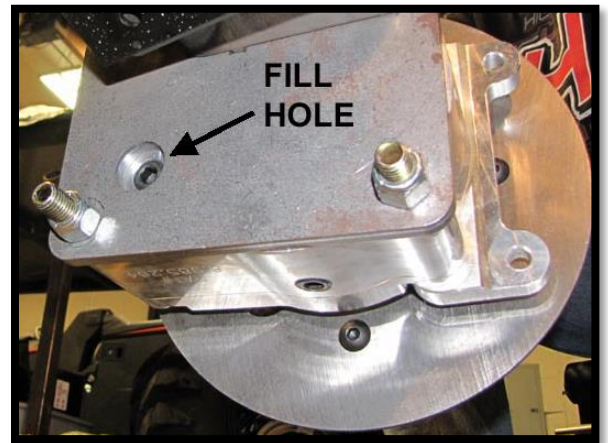
- Bleeding the brakes is a two person job; you will need someone at the brake caliper and someone to pump the brake foot pedal. Take precautions due to the vehicle being on jacks and/or jack stands.
- Clean master cylinder cover thoroughly and remove the cover.
- Add brake fluid to the indicated MAX level of the reservoir. (Any DOT 4 Brake Fluid)
- Begin bleeding procedure with the caliper that is the farthest from the master cylinder. It should be this sequence - (PA) REAR, (DR) REAR, (PA) FRONT, and then (DR) FRONT.
- Install a box end wrench on the caliper bleeder screw. Attach a clean, clear hose to fitting. Be sure the hose fits tightly on fitting. Now place the other end of the hose into a clean container.
- Have your brake buddy slowly pump the foot pedal until pressure builds and holds. Have your buddy hold brake pedal down to maintain pedal pressure. Now you open the caliper bleeder screw so the air and fluid will displace into the container.
- Close bleeder screw, and then have your buddy release the foot pedal.
NOTE: Do not release foot pedal before the bleeder screw is tight or air may be drawn into the master cylinder... and you have to start all over again!
- Check the master cylinder fluid level.
NOTE: You must maintain at least 1/2" (1.27cm) of brake fluid in the reservoir to prevent air from entering the master cylinder
- Repeat these steps until clean fluid appears in the bleeder hose and all the air has been purged... Close bleeder screw, pump brakes, hold pressure, open bleeder, close bleeder, release foot pedal, check master cylinder.



- j. Tighten bleeder screw securely and remove bleeder hose. Torque the bleeder screw. [4 ft lbs]
- k. **REPEAT** procedure steps for the other three (3) brake calipers in the sequence listed above.
- l. Add brake fluid to MAX level inside master cylinder reservoir after the last caliper is completed. Install master cylinder reservoir cover. Check brake system for leaks.

23. FILL PORTAL BOXES WITH OIL

- a. Make sure the vehicle is positioned securely and 'Level'. If necessary, until the portal box assembly is level with the ground: front to back and side to side.
- b. Use **SAE 80W-90 oil**. We chose this premium grade gear lubricant designed for gears operating under severe temperature and load conditions, and whose SAE 80W-90 viscosity grade offers extended drain performance.
- c. Remove the spout on the bottle container. Place a shop rag or shop pan on the floor underneath the portal box assembly fill plug to catch any drips or spillage. Keep a shop rag handy for any spills.
- d. On the lower backside of the portal mount is an opening for the portal box fill plug. (It is always toward the front of the vehicle.) Remove the fill plug with an allen wrench. (8mm)
- e. Take the gear oil bottle and fit the spout into the fill hole. A box will use approximately 4 oz of oil inside. You can gently 'Squeeze' the bottle to help the process.
- f. **Fill the portal box until the fluid starts draining back out of the fill hole.** Then reinstall the fill plug. [20 ft lbs]



CAUTION: Do not over fill past the oil fill plug. If the oil heats up or expands, over filling will cause the oil to exhaust out the axle seal.

24. INSTALL REAR TIRES & WHEELS

Wheel Requirements with Portals:

- 14" or larger
 - 14" & 15" cannot exceed 4-1/2" backspacing
 - 16" & larger cannot exceed 5" backspacing
 - 14" factory wheels must run 2" spacers
- a. Install wheel lug nuts and securely tighten.
 - b. Remove all jacks, jack stands and other devices used to lift and hold the vehicle.
 - c. With the suspension supporting vehicle weight, torque the wheel lug nuts using a "X" tightening pattern.

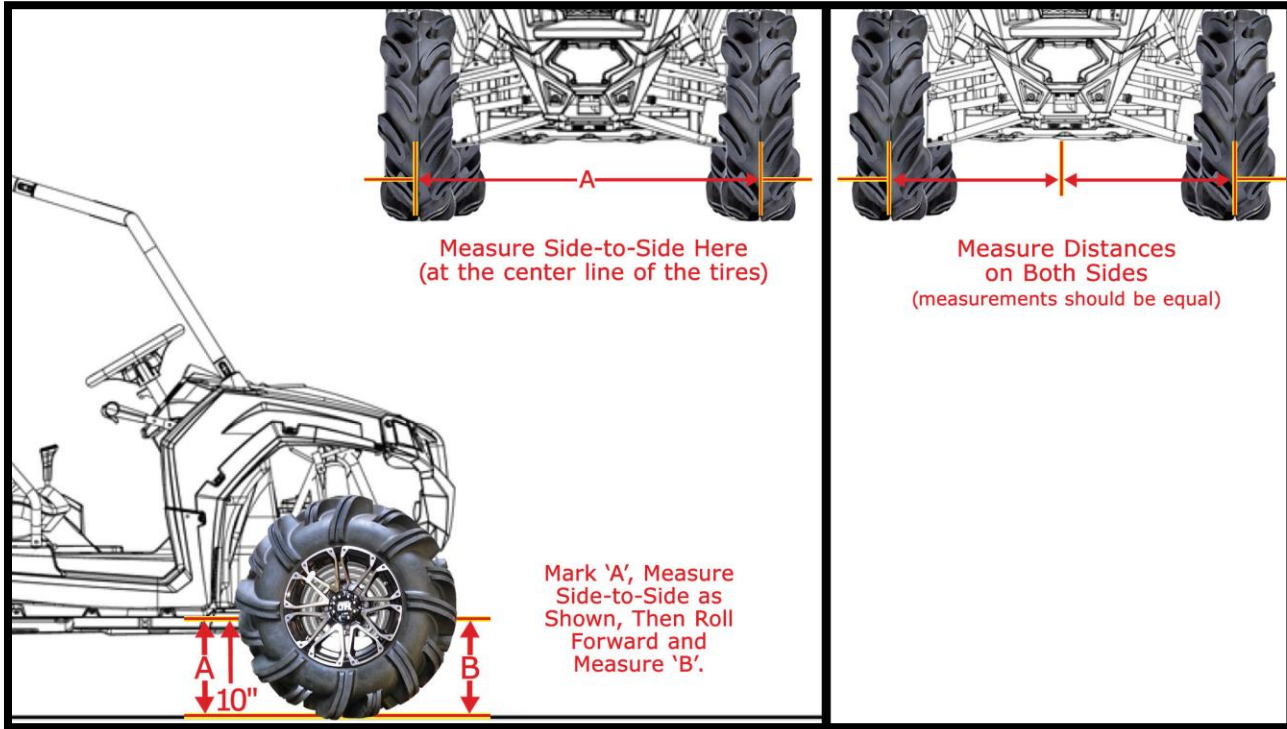
Aluminum wheels = [90 ft lbs]

Steel wheels = [50 ft lbs]

WARNING: Retighten lug nuts at eight (8) hours after any wheel change or anytime wheel nuts are loosened. Failure to do so could cause wheels to come off while the vehicle is in motion. This is another warning and reminder.

REMEMBER: You just bled the brakes, unbolted and bolted steering and drive train components, added more take-off torque and made many changes by adding the portal boxes. FIELD TEST this machine at LOW speed before putting into full time Play or Work Mode. Check the brakes for proper braking action and pedal reserve.

25. FRONT ALIGNMENT



- Place the machine on a smooth level surface and set the steering wheel in a 'straight ahead' position. Secure the steering wheel in this position.
- Place a chalk mark on the center of the tires approximately 10" (25.4cm) from the floor or as close to the hub/axle center line as possible.
NOTE: It is important the height of both marks be equally positioned to get an accurate measurement.
- In the 'Front' of the tires, measure the distance between the center mark of the (LH) tire to the center mark of the (RH) tire. Record the measurement as 'A'.
- In the 'Rear' of the tires, measure the distance between the center mark of the (LH) tire to the center mark of the (RH) tire. Record the measurement as 'B'.
- Subtract measurement 'B' from measurement 'A'. The difference between measurement 'A' and 'B' is the vehicle toe alignment. ($A - B = \text{Toe Alignment}$)
- The recommended vehicle toe tolerance is 1/8" to 1/4" (3.175-6.35mm) toe out. This means the front measurement of the tire (A) is wider than the rear measurement (B).
- If the toe alignment is incorrect, measure the distance between vehicle center and each wheel (use the chalk mark as wheel center). This will tell you which tie rod needs adjusting.

IMPORTANT NOTE: Be sure the steering wheel is straight ahead before determining which tie rod needs adjustment. When tightening the tie rod end jam nuts, the tie rod ends must be held parallel to prevent rod end damage and premature wear. Damage may not be immediately apparent if done incorrectly.

- h. To adjust the toe alignment, hold the tie rod end to keep it from rotating. Loosen the jam nuts at both ends of the tie rod. Shorten or lengthen the tie rod (screw it in or screw it out) until alignment is as required to achieve the proper 'Toe Out' front setting.
- i. After alignment is complete, tighten & torque tie rod end jam nuts to specifications. [12-14 ft lbs]

26. INSTALL WARNING DECALS

NOTICE TO DEALER, INSTALLER, AND VEHICLE OWNER:

Any vehicle equipped with a portal gear lift must have the enclosed four (4) "Warning to Driver" decals [(1) #GL-13-01, (1) #GL-13-02, (1) #GL-13-03 & (1) #GL-13-04] and the large format "WARNING Rollover Hazard" decals installed on the inside of the windshield or on the vehicle's dash, within driver's view. The "Warning to Driver" decal is to act as a constant safety reminder for whoever may be operating the vehicle.

INSTALLING DEALER:

It is your responsibility to install ALL four (4) warning decals and forward these installation instructions to the vehicle owner for review of warnings, product use, and maintenance information. Replacement Warning Decals are available FREE on request. These instructions are to be kept with the vehicle registration.

The **WARRANTY IS VOIDED** unless the official decals are in place.

Thank You
For Choosing
HIGHLIFTER

High Lifter Portal Gear Warranty Program

Thank you for purchasing a High Lifter Products Portal Gear Lift. Our Portal Gear Lifts have been engineered to provide superior performance on your ATV/UTV.

LIMITED LIFETIME WARRANTY:

HIGH LIFTER PRODUCTS, INC. warrants to the **ORIGINAL** purchaser of any Portal Gear Kit for a lifetime of protection from the date of purchase against defects in materials or workmanship, subject to the following conditions:

- a) The product must be properly installed according to all installation instructions.
- b) **HIGH LIFTER** is not liable for any incidental or consequential damages to anything other than the Portal Gear Kit covered by this warranty. **HIGH LIFTER** is not liable for any incurred expenses, labor costs to install/remove/reinstall Portal Gear Kit or any OEM or aftermarket components, loss of use of machine, damage to housings or damage to any aftermarket accessory or OEM components.
- c) If the Portal Gear Kit has been disassembled or modified by a third party, the warranty is null and void.
- d) Any Portal Gear Kit damaged in a collision with any object is excluded from this warranty. However, the Portal Gear Kit may be refurbished for a fee upon repair authorization by the owner. Costs will vary depending on the condition of each Portal Gear Kit assembly.
- e) Warranty is non-transferable from the **ORIGINAL** purchaser.
- f) **HIGH LIFTER** reserves the right to inspect the Portal Gear Kit for determining if there were any defects in the installation and to determine the validity of any warranty claim. The warranty process may require the **ORIGINAL** purchaser to provide photographs of the ATV/UTV and its installed Portal Gear Kit.
- g) Items that will not be covered under the warranty are but not limited to: Bearings, Seals, Gaskets, and Wheel Studs. All other components in kit are subject to review by **HIGH LIFTER** to determine reason for failure and if they meet requirements for warranty coverage.
- h) Warranty will be void on products that show; misapplication, improper installation, abuse, lack of proper maintenance, negligence, or alteration from original design.
- i) Any parts used to repair a portal kit must be purchased from **HIGH LIFTER** or warranty will be voided. For safety reasons it is important that the proper fastener grade, thread engagement, and torque specification be followed to prevent parts from failing. See instructions for torque data/specifications.

REFUSED SHIPMENTS/ORDER CANCELLATION:

Refused shipments are subject to a 20% restocking fee plus all associated freight costs. It is our goal to ship all orders in a timely manner. If a customer wishes to cancel an order (provided it is not a special-order product), it is the responsibility of the customer to cancel the order prior to the product being shipped. If a customer cancels an order after product has been shipped, the refused shipment, cancellation, or return will be subject to a 20% restocking fee and any freight charges incurred. For orders outside the United States, any fees associated with customs or duties are non-refundable.

DAMAGED SHIPMENTS:

All claims for damaged shipments must be made within 72 hours of delivery to the point of destination. Any damage to package should be noted with carrier at the time of delivery if possible. We will not be responsible for damage claims made over 72 hours after delivery to the point of destination.

OBTAINING A WARRANTY CLAIM:

All returns for warranty must be pre-approved by calling 1.800.699.0947. After warranty approval has been granted and a Return Merchandise Approval (RMA) number issued, the Portal Gear Kit must be received by **HIGH LIFTER PRODUCTS** within 15 calendar days. The RMA number must be clearly displayed on the return box or the return will be refused. An RMA number does not imply that a replacement or refund will be issued on any product, but only that we will inspect the Portal Gear Kit for warranty claims. For orders outside the United States, any freight or fees associated with customs and duties are the responsibility of the purchaser and are non-refundable. All claims must be accompanied by the sales receipt detailing date and place of purchase, a written explanation of the problem, a phone number, and e-mail address. A copy of this receipt must be included with the Portal Gear Kit submitted for warranty repair or replacement. The purchaser is responsible for any freight charges on all warranty claims, including incoming freight to High Lifter and return freight to the purchaser.



High Lifter Products Warranty Claim

Name: _____

Address: _____

Phone Number: _____

E-Mail Address: _____

Portal Gear Kit Product Number: _____

Place of Purchase: _____

Date of Purchase: _____

Reason for Return: _____

Return Merchandise Authorization (RMA) Number: _____

High Lifter Products
780 Professional Drive North • Shreveport, Louisiana • 71105
1.800.699.0947
www.HighLifter.com