



# OPERATIONS MANUAL



**RBO™ IT FITS ROTOPAX™ MOUNT**



## WARNING



**It is the operator's responsibility to follow all manufacturer's recommendations regarding the safe operation of the vehicle.**

**Before Transporting Flammable Liquids Please Read and Understand your Vehicles Owners Manual.**

**Operator must follow your vehicle manufactures warnings regarding fuel transportation.**

**Only Use Containers Approved For Off-road Use.**

**Make Sure Containers are Secured to Avoid Spills and Leaks.**

**Be Sure To Comply with All Laws and Warnings Regarding the Safe Handling Of Flammable Liquids.**

**Read, understand, and follow all of the instructions and safety precautions in this manual and on all product labels.**

**It is the installers responsibility to follow all manufacturer's recommendations and instructions regarding safe operation, assembly, and installation of an accessory.**

**Operator must use common sense when using any RBO accessory and when loading a rack so it does not affect the vehicle's safe operation.**

**The "IT FITS™" ROTOPAX™ Mount should not exceed what is recommended for the "IT FITS™" profile for weight and should not be used as a step or hanging point. (Please refer to your RBO Manual, for your rack's specific load ratings.)**

**We recommend regular inspections and replacement of ROTOPAX™ containers to ensure they function as designed, and to prevent loss, damage, or injury.**

**Adding mounts to the side and/or rear of the vehicle increases its size. RBO highly recommends that you don't take risks that shift the "Center of Gravity" (CG) of the machine which could increase the potential for Roll Over.**



**Ignoring these cautions and warnings could increase the potential for accidents that could result in serious injury or death.**

Copyright 2018 Inventive Edge, LLC dba RazorBack Offroad™ (RBO)

All information contained within this publication is based on the latest product information at the time of publication. Due to constant improvements in the design and quality of production components, some minor discrepancies may result between the actual parts and the information presented in this publication. Depictions and/or procedures in this publication are intended for reference use only. No liability can be accepted for omissions or inaccuracies. Any reprinting or reuse of the depictions and/or procedures contained within, whether whole or in part, is expressly prohibited.

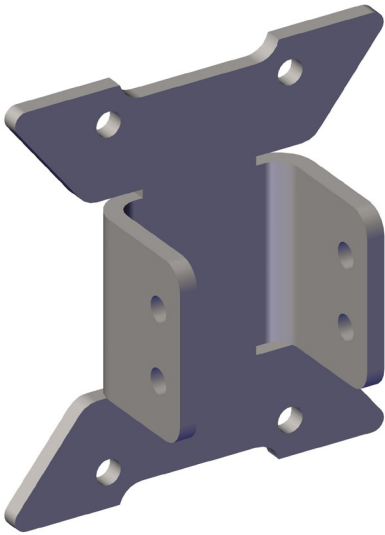
Printed in U.S.A.

RBO1008 - "IT FITS™" ROTOPAX™ Operation Manual

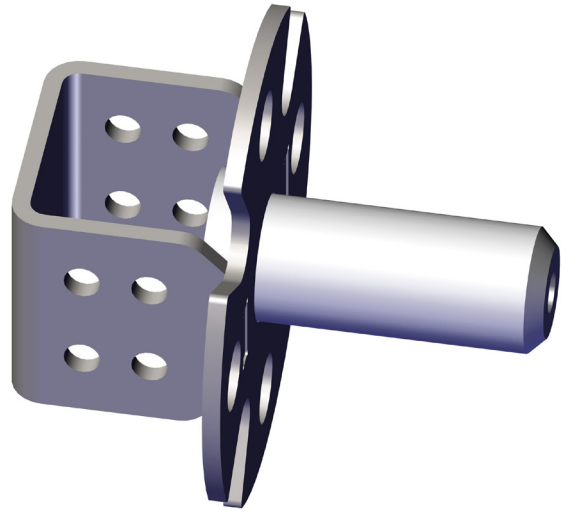
DOC CONTROL NUMBER RBO0060

## INCLUDED PARTS AND HARDWARE:

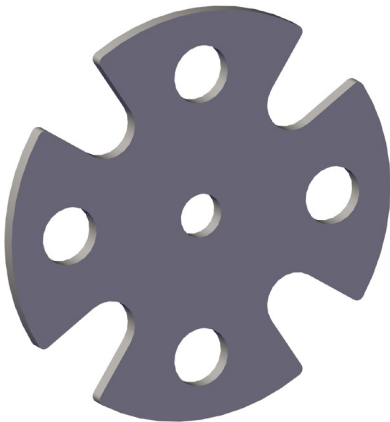
### PARTS:



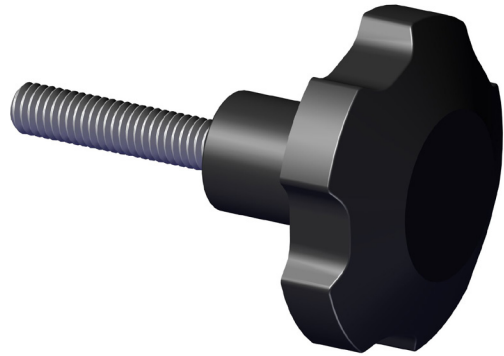
(1)  
"IT FITS™" Mounting Bracket



(1)  
Offset Arm

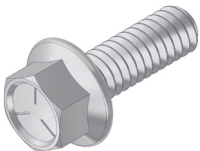


(1)  
Fuel Can Top Plate

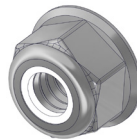


(1)  
"IT FITS™" Knob

### HARDWARE:



(8) - 1/4" - 20 X 3/4"  
Hex Flange Bolt



(8) - 1/4" Nylock Flange Nut

## RECOMMENDED TOOLS FOR INSTALLATION

( not included )

- Impact Gun
- 7/16" End Wrench

## The "IT FITS™" mounting system



The "IT FITS™" mounting system is designed so that you can quickly and easily install onto any RBO rack any RBO Accessory with the "IT FITS™" icon onto any RBO Rack.

"IT FITS™" also means that these accessories come with all the hardware you need to install accessories on your RBO rack without drilling or modifying your accessory or machine.

### ASSEMBLY INSTRUCTIONS:

## STEP 1

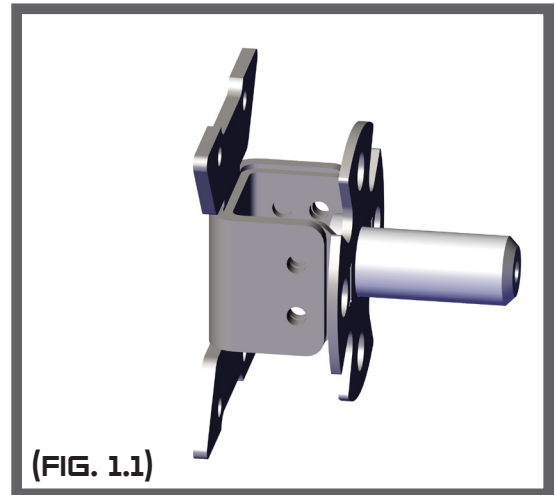
setting the offset of the "IT FITS™" Rotopax™ Mount:

### 0" OFFSET

#### (0" - STEP 1.1)

To set the "IT FITS™" Rotopax™ Mount to its first offset position (0") place the Offset Arm into the It Fits Mounting Bracket until the base of the Offset Arm is resting flush against the Mounting Bracket and the holes in the Offset Arm and Mounting bracket are aligned as shown in the image to the right.

See Figure 1.1



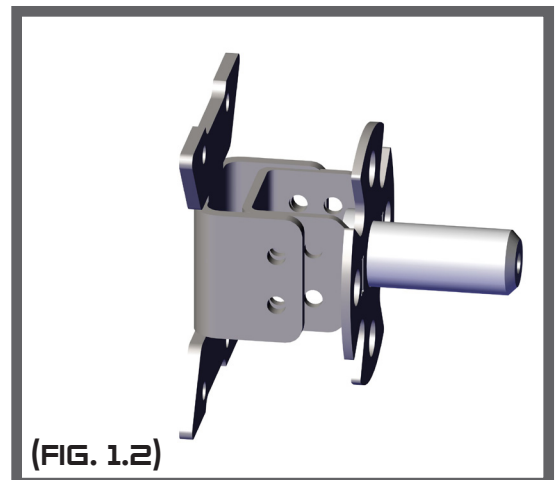
(FIG. 1.1)

### 1/2" OFFSET

#### (1/2" - STEP 1.1)

To set the "IT FITS™" Rotopax mount to its second offset position (1/2") place the Offset Arm into the It Fits Mounting Bracket and align the first sets of holes at the base of the Offset Arm with the sets of holes in the Mounting Bracket as shown in the image to the right.

See Figure 1.2



(FIG. 1.2)

# STEP 2

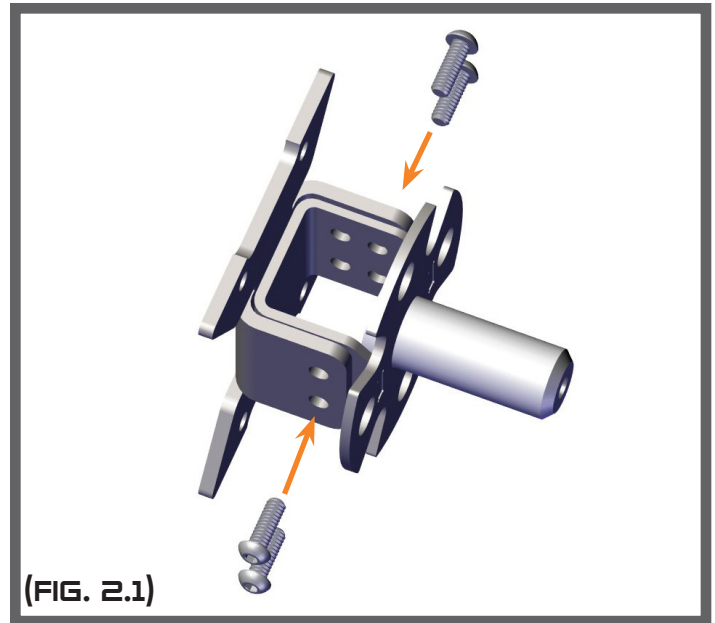
securing the offset.

## (STEP 2.1)

Once the rack's "IT FITS™" mounting bracket and the "IT FITS™" Mounting Bracket are aligned inset hardware into each of the four holes on the "IT FITS™" Mounting Brackets and then start each screw with a single 1/4" Nylock Nut.

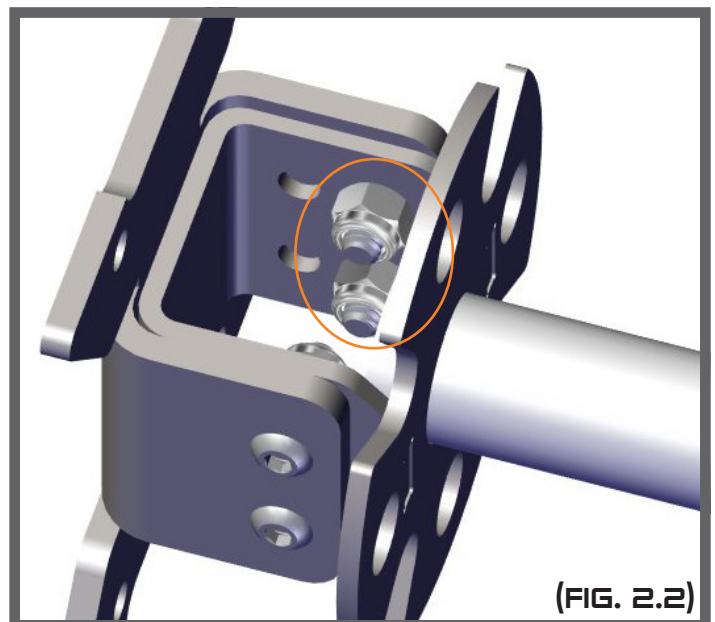
## (STEP 2.2)

See Figure 2.1



Once the cap screws and Nylock Nuts are started RBO recommends using an impact driver with a #3 Phillips attachment with a 7/16" wrench to tighten down each Bolt and Nylock Nut.

See Figure 2.2



# STEP 3

Installation of the "IT FITS™" ROTOPAX™ Mount to a Rack.



## WARNING

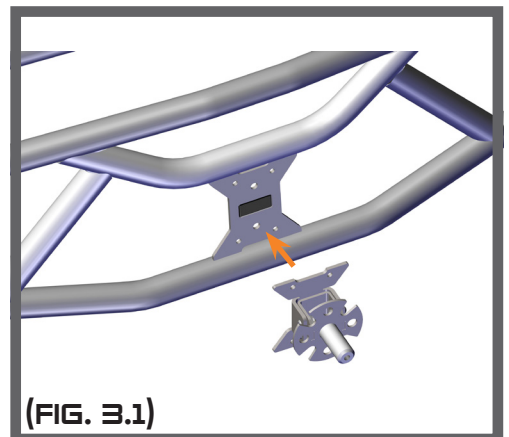


Adding mounts to the side and/or rear of the vehicle increases its size and may affect the balance and performance of a vehicle.

### (STEP 3.1)

Place the assembled mount with the "IT FITS™" Mounting Bracket against the location on the rack you wish to install your "IT FITS™" ROTOPAX™ Mount to.

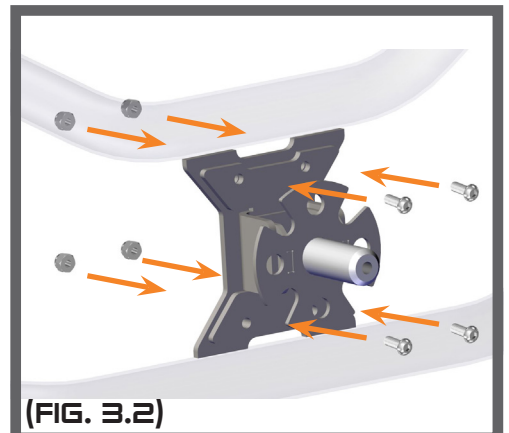
See Figure 3.1



### (STEP 3.2)

Fasten ROTOPAX™ Mount to "IT FITS™" mount using 1/4" x 3/4" Phillips/Slotted Screws and 1/4" Nylock Nuts.

See Figure 3.2



### (STEP 3.3)

With the screws and bolts in place RBO recommends using an impact driver with a #3 Phillips attachment with a 7/16" wrench to tighten down each Bolt and Nylock Nut to the RBO Rack.

See Figure 3.3



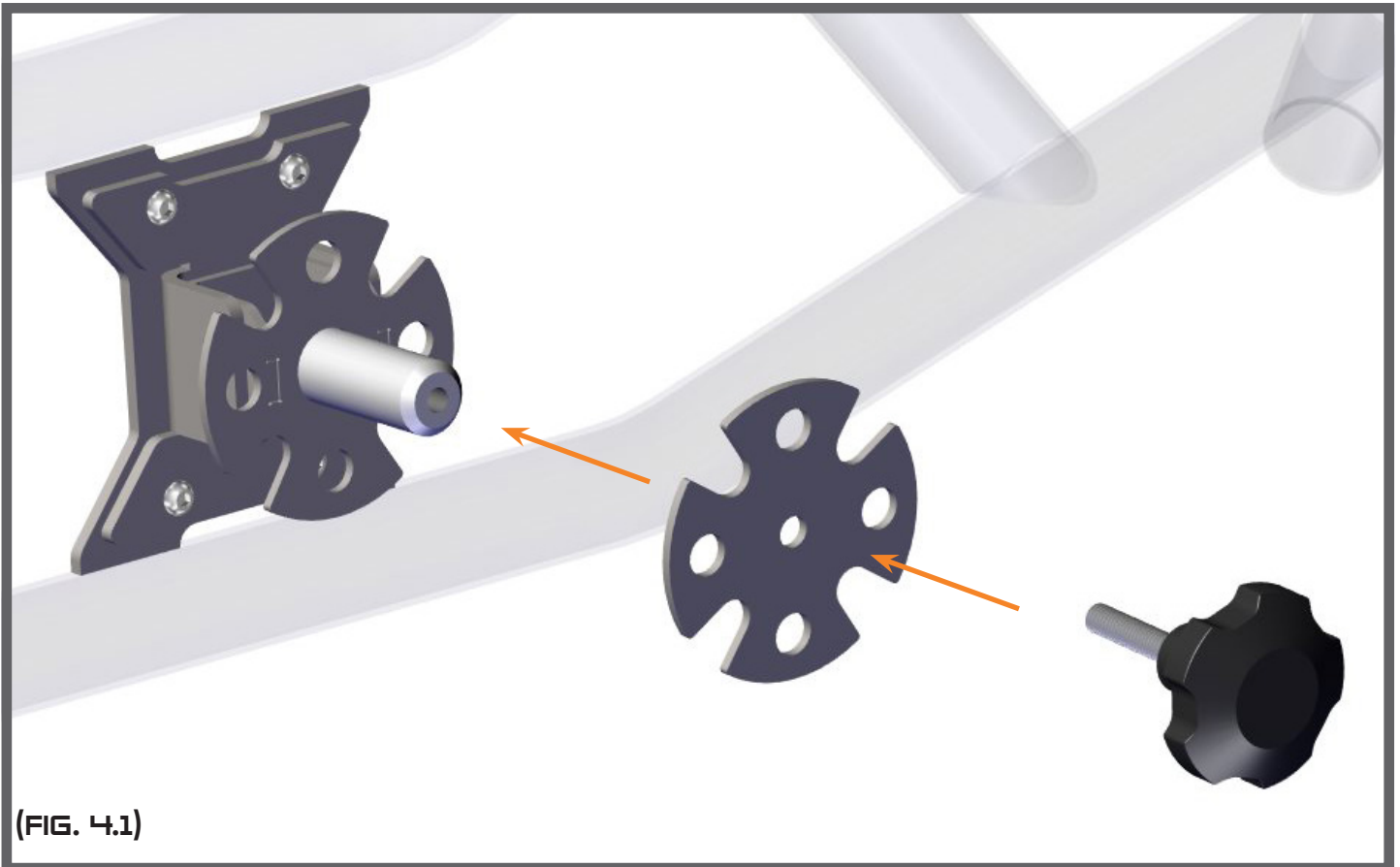
# STEP 4

Installation of the "IT FITS™" ROTOPAX MOUNT to a RACK.

(step 4.1)

With the "IT FITS™" Rotopax™ Mount now mounted to the rack a ROTOPAX container can be slid on the Offset Arm. Once resting on the arm and positioned as desired the Fuel Can Top Place slid over the arm and the "IT FITS™" knob inserted into the hole in the center of the arm and tightened down securing the entire assembly.

See Figure 4.1





PH: (208) 696-7230 FAX: (208) 580-1900

inventive edge, LLC 3190 Industrial Way, Mountain Home, ID 83647



RB00060R1