

Notes: If you have the Turbo S
please contact us to order the
additional bracket required for
the Turbo S

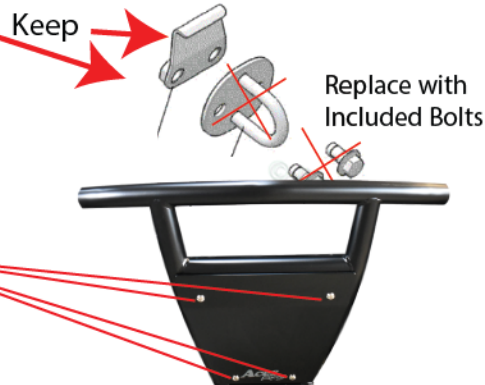


Sport Bumper Installation

Step 1: Remove the grille by pulling down on the plastic tabs on the top of the grille.



Step 2: Remove the lower tow hook if you RZR is equipped with them. If not, ignore this step.



Step 3: Remove skid plate from bumper

Step 4: With the skid plate removed, start bolting the bumper on to your RZR. **Start with the top 2 bolts** and work your way down to the bottom. Make sure to hand tighten each bolt until all 4 bolts are in. This makes it much easier to line up all of the holes. If you do tightened one at a time. There is a chance the holes will not line up



Step 5: Mount your skid plate back on to the bumper

WARNING Do not use bumper as a tow point.

WARNING
Cancer and
Reproductive Harm
www.P65Warnings.ca.gov

Power: 120W/120V www.DanvillePower.com

Info@Aces-Racing.com

24/7

Any Questions?

Contact us Below

(714) 321 5107

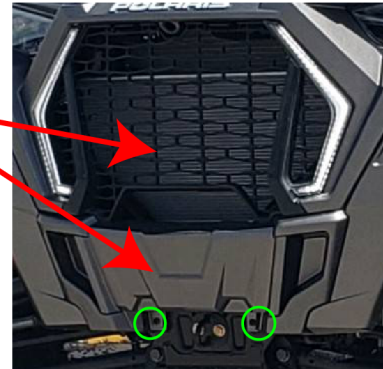
Monday-Friday 9-4pm PST



Sport Bumper Installation

2018-2020 RZR Turbo S

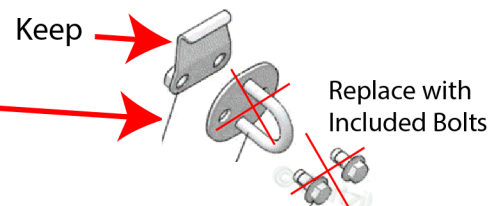
Step 1: Remove grille and plastic winch cover. Remove the grille by pulling down on the 2 plastic tabs above the grille. Remove the winch cover by removing the 2 screws circled.



Step 2: Mount included bracket above the winch mount with the included 1/2 inch nuts and bolts. Once the included bracket is installed. Mount the plastic winch cover back on to the machine.



Step 3: Remove lower tow point



Mount bumper to the included bracket and to the lower tow hooks with the included bolts use the stock tow hook backer to secure the bolts.. To do this you have to remove the upper skid plate nuts and bolts. Leave the bottom 2 nuts and bolts on the skid plate loosely tightened. Once everything is tight, mount the skid plate back on to the bumper.

Step 4:



Any Questions?

Contact us Below

Info@Aces-Racing.com

24/7

(714) 321 5107

Monday-Friday 9-4pm PST