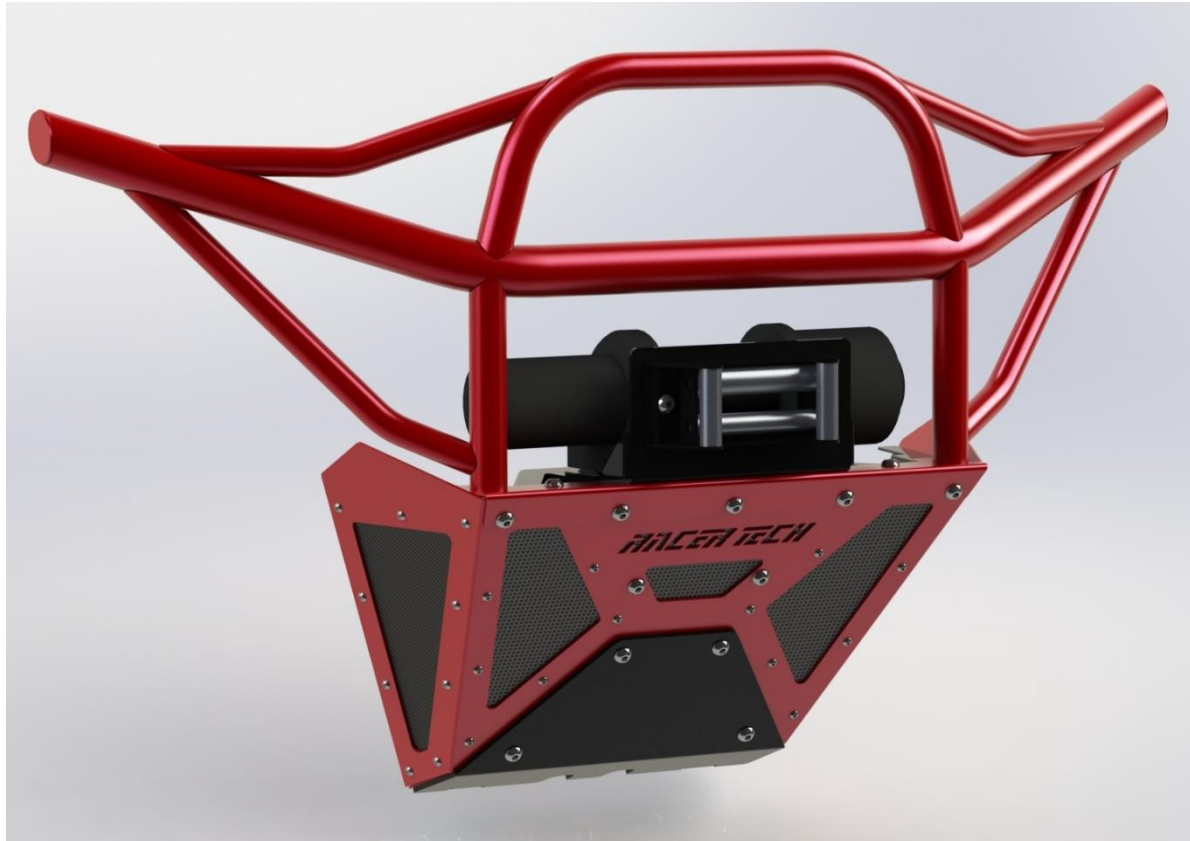


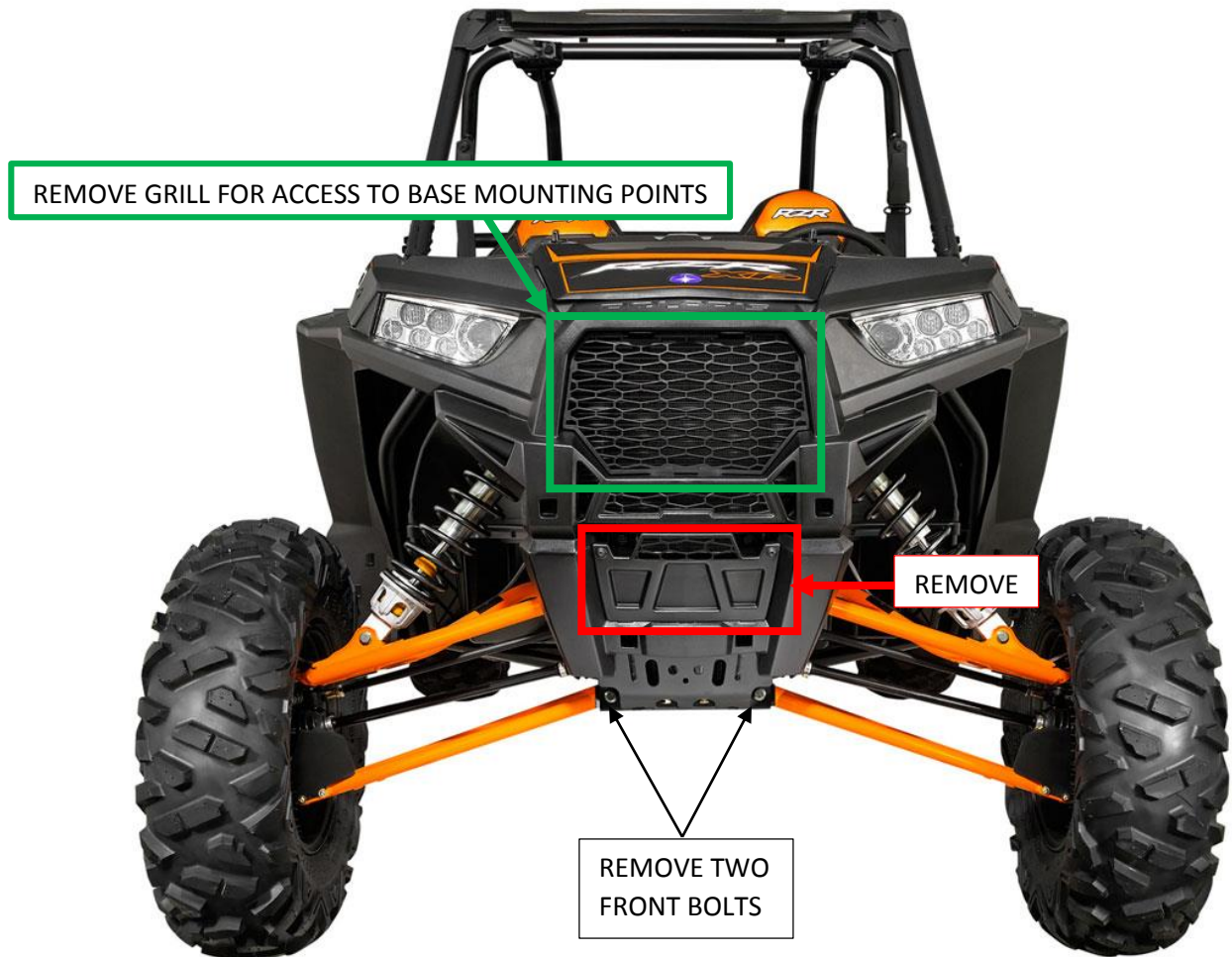
RZR XP1000 / RZR 900 FRONT BUMPER INSTALLATION INSTRUCTIONS

THANK YOU FOR YOUR PURCHASING THE LEGENDARY RACERTECH BUMPER. THIS IS A PRETTY STRAIGHT FORWARD INSTALLATION BUT HERE ARE SOME GUIDELINES TO HELP YOU ALONG:



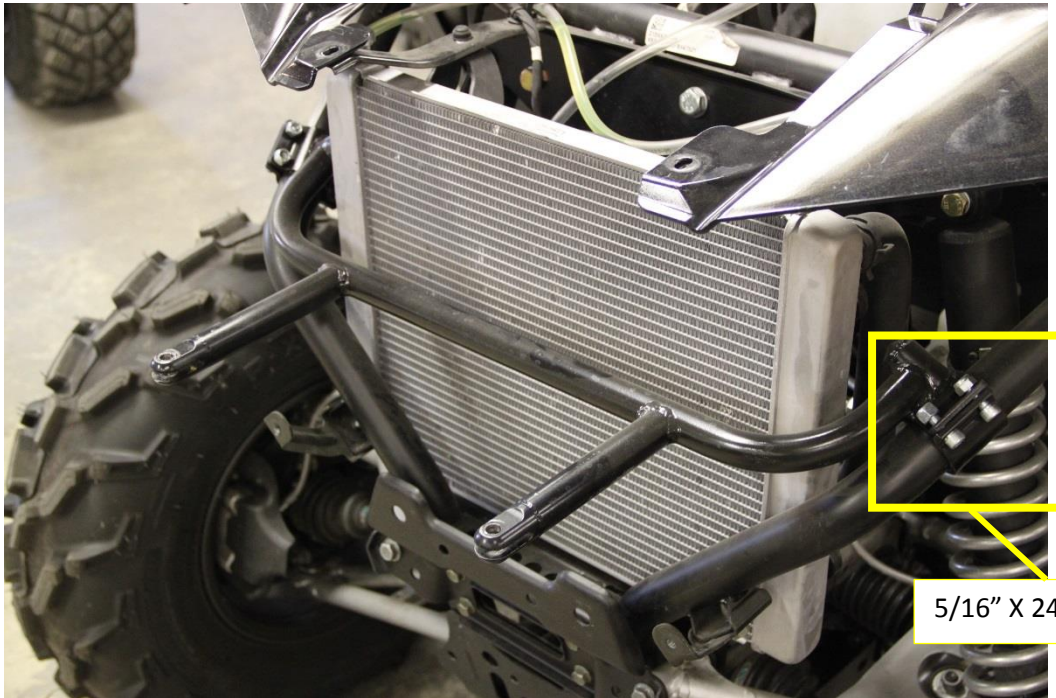
| HARDWARE INCLUDED (BUMPER ONLY): | RIGID MOUNT UPGRADE OPTION: |
|---|---|
| (17) 3/8-16 x 1" BHCS (19) 3/8-16 NYLOC NUTS (2) 3/8-16 X 1" HEX BOLTS (30) 10-24 X 3/4" BHCS (30) 10-24 NYLOC NUTS (2) MOUNT BUSHINGS | (2) 3/8-16 X 1.5" BHCS (2) 3/8-16 X 1" BHCS (4) 3/8-16 NYLOC NUTS (8) 5/16-24 X 7/8" SHCS (8) 5/16-24 NYLOC NUTS (1) TAB BAR (2) 1.5" FLANGE CLAMPS |

- 1.) IF RIGID MOUNT OPTION WAS NOT PURCHASED WITH YOUR BUMPER, YOU DO NOT NEED TO TAKE OFF FRONT PLASTICS OTHER THEN THE ONES SHOWN IN ILLUSTRATION BELOW.

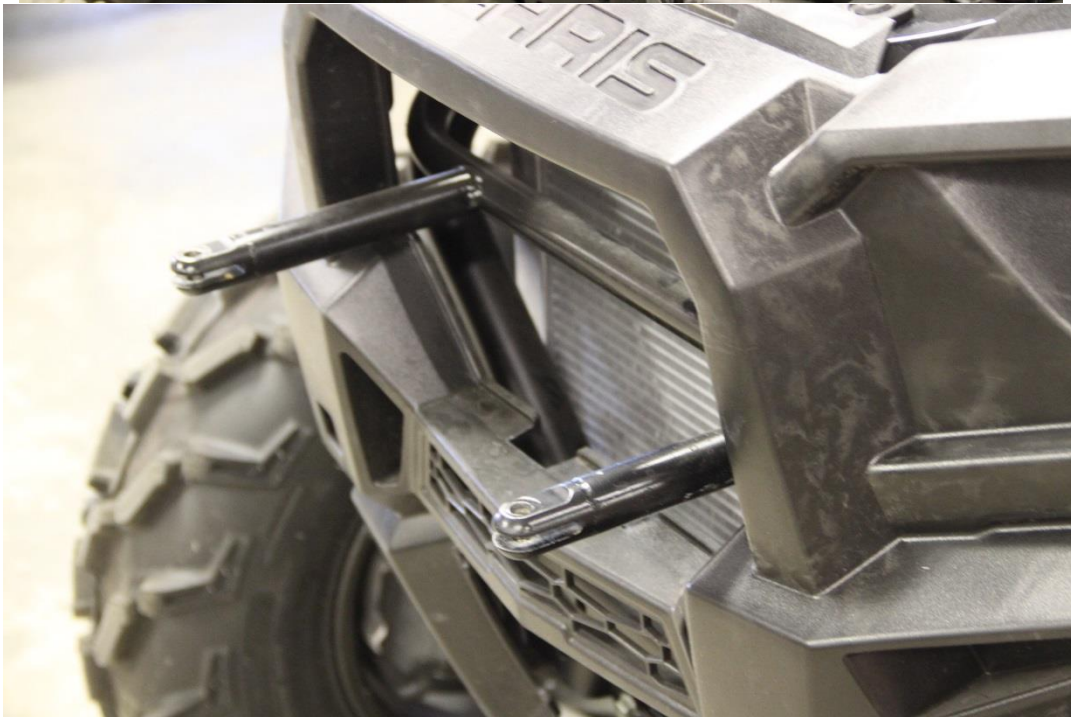


- 2.) TEAR DOWN NEEDED TO INSTALL THE BUMPER WITH RIGID MOUNTS: FIRST JACK UP YOUR RZR, SECURE WITH JACK STANDS, THEN REMOVE THE FRONT LOWER A-ARM BOLTS (JUST THE FRONT TWO BOLTS), GRILL, AND FRONT FASCIA. YOU WILL NEED TO UNHOOK THE HEADLIGHT CONNECTIONS TEMPORARILY.

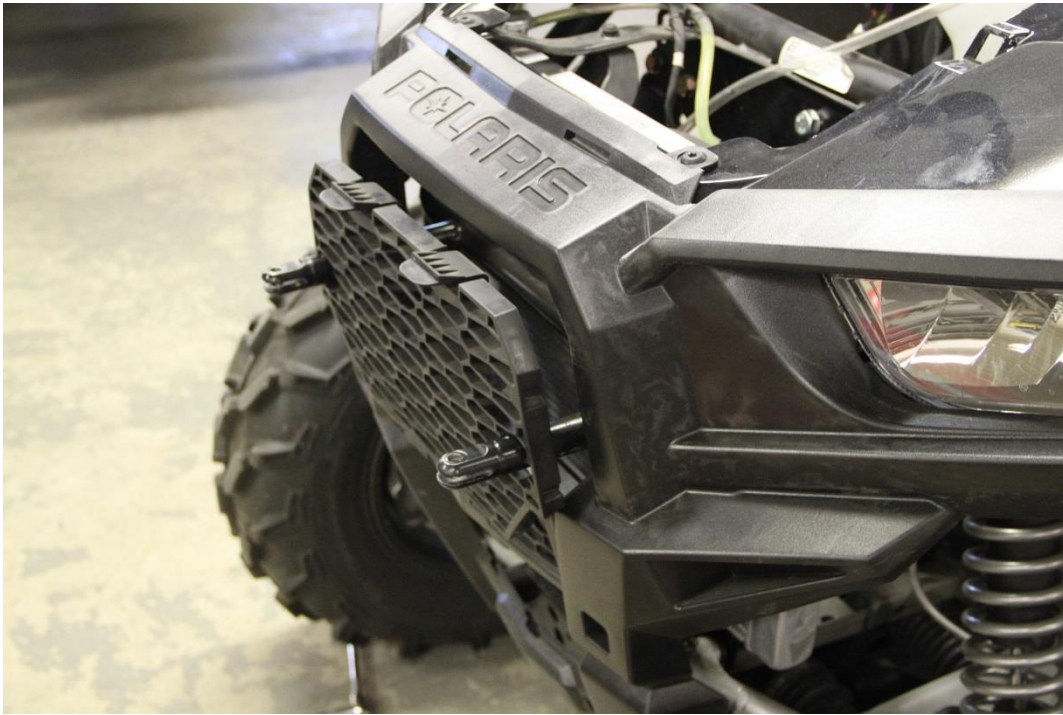
- 3.) INSTALL FRONT RIGID ARM (LOOSLY). ONCE RIGID ARM IS ON AND FLANGE CLAMPS ARE STARTED, RE-INSTALL FRONT FASCIA ALLOWING THE FRONT TUBES TO PROTRUDE THROUGH THE GRILL AREA AND RE-CONNECT HEADLIGHT PLUGS.



5/16" X 24 X 7/8" SHCS

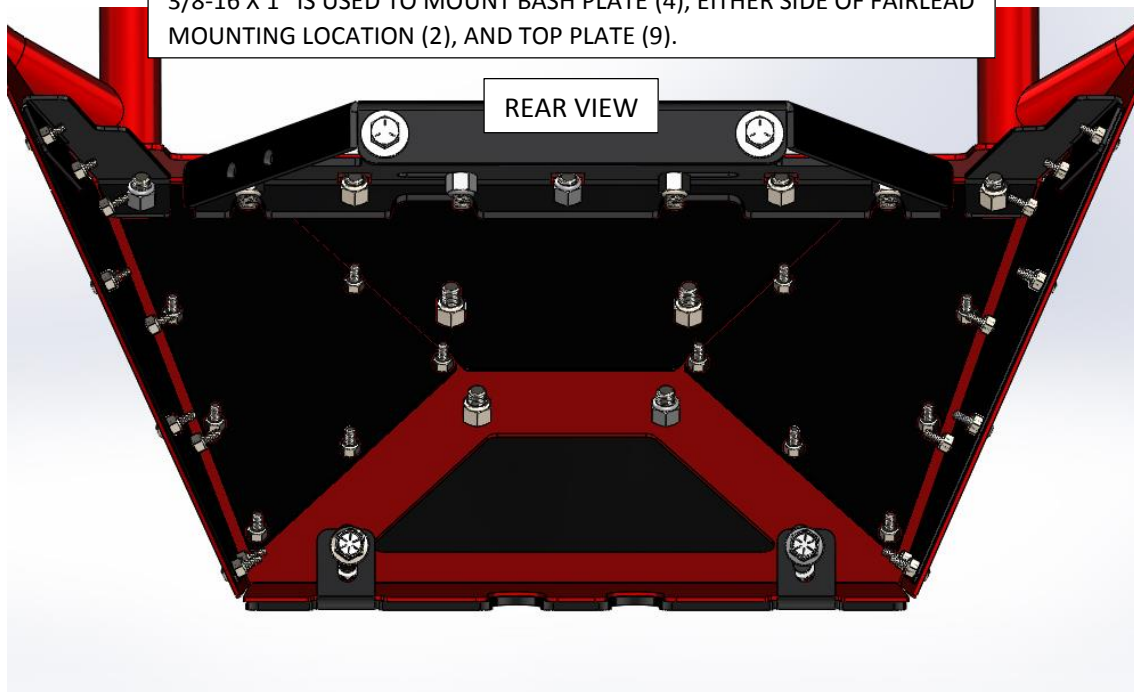


- 4.) TO USE GRILL INSERT WITH BUMPER, CUT OUT PORTION AS SHOWN ON THE SUPPLIED TEMPLATE.

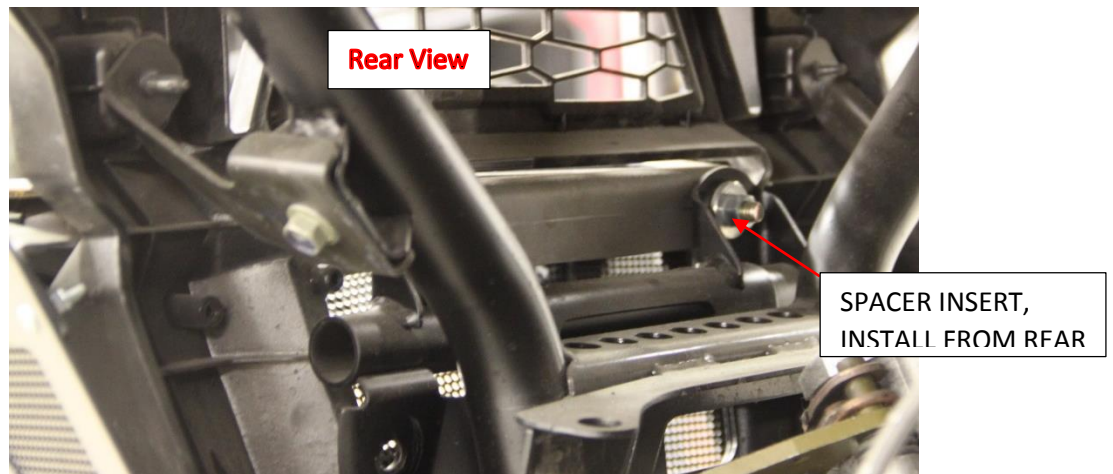
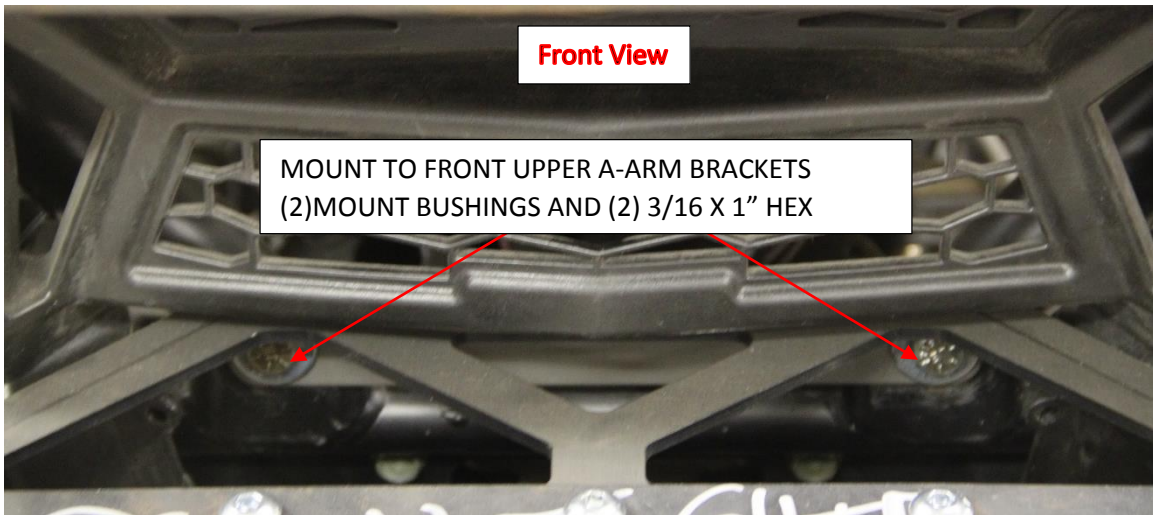


- 5.) ASSEMBLE FRONT BASE SECTION OF BUMPER. DO NOT INSTALL TOP PLATE BOLTS UNTIL YOU INSTALL THE TOP SECTION OF THE BUMPER.

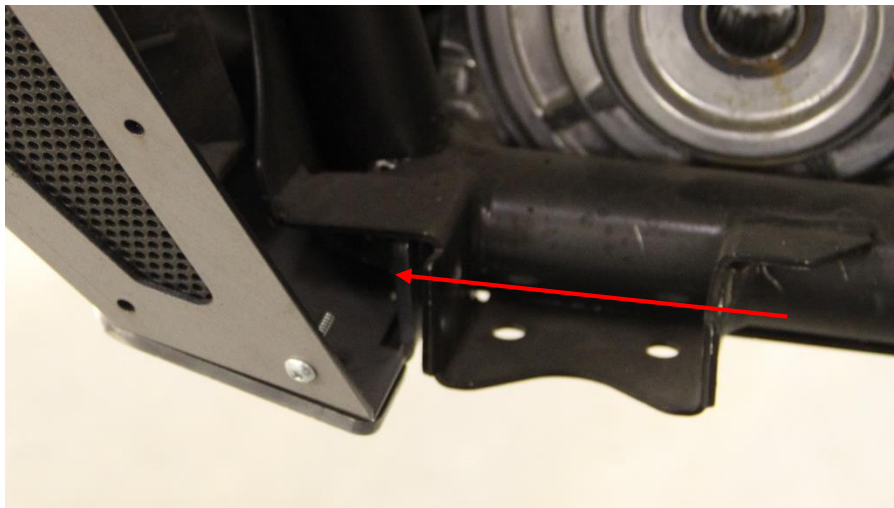
USE (30) 10-24 X $\frac{3}{4}$ " BHCS TO HOLD IN MESH AS SHOWN BELOW
3/8-16 X 1" IS USED TO MOUNT BASH PLATE (4), EITHER SIDE OF FAIRLEAD
MOUNTING LOCATION (2), AND TOP PLATE (9).



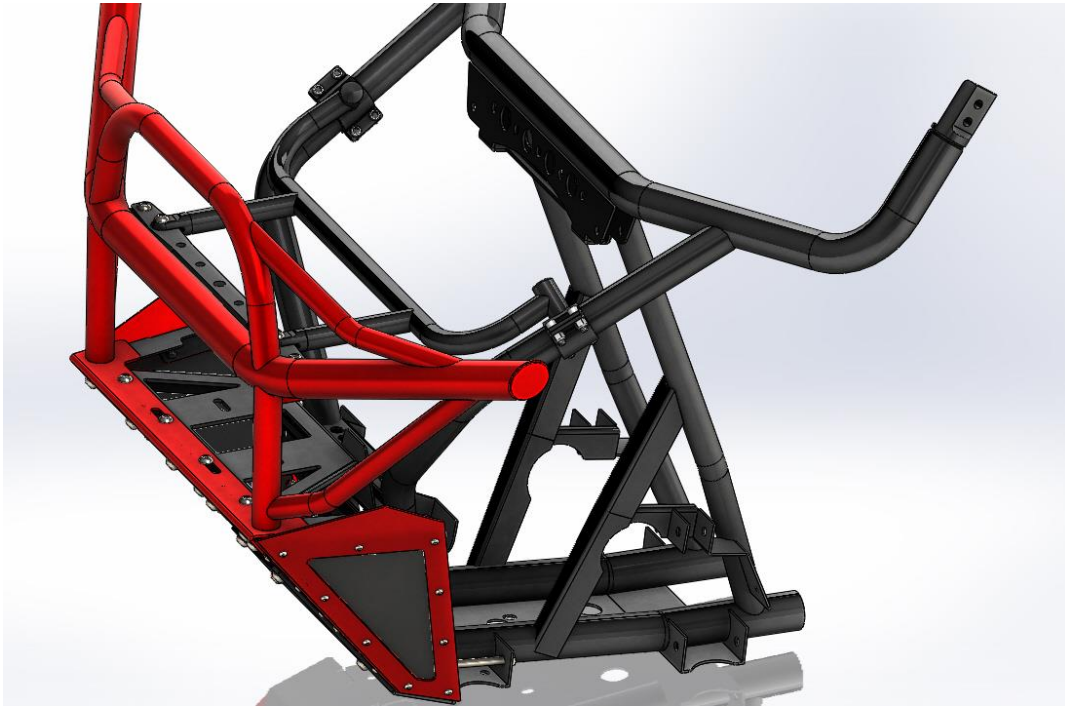
6.) MOUNT ASSEMBLED BASE TO LOCATIONS SHOWN BELOW.



7.) MOUNT TO FRONT LOWER A-ARM BOLT. INSTALL BOLT FROM THE REAR.

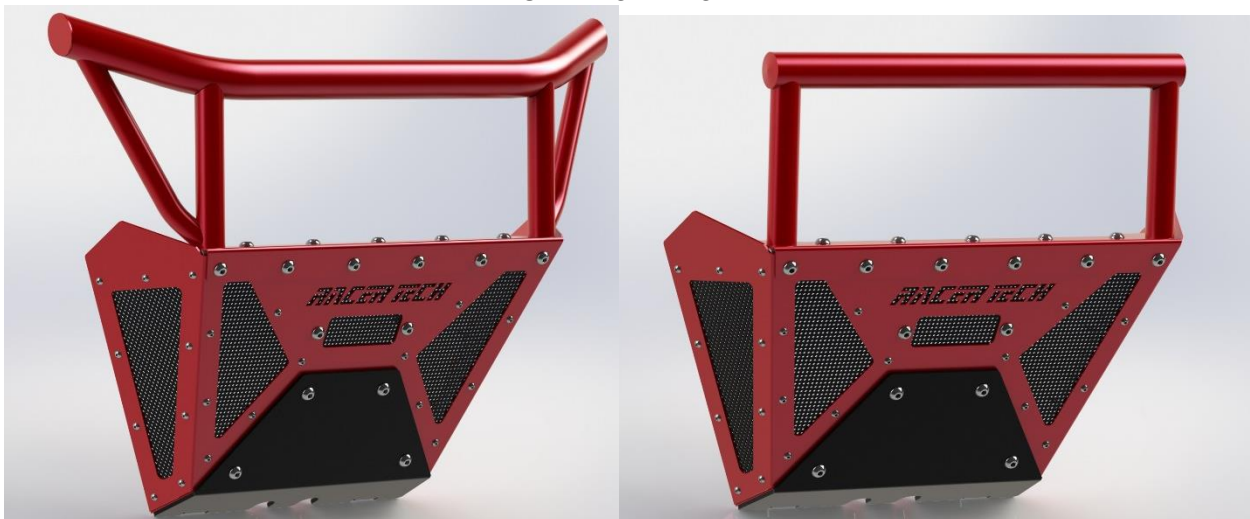


- 8.) INSTALL TOP HALF OF BUMPER TO BASE. IF RIGID ARM OPTION WAS PURCHASED, INSTALL TAB BAR ON TO TOP HALF TABS (2) 3/8-16 X 1" BHCS), AND CONNECT RIGID ARM TO LIGHT BAR (2) 3/8-16 X 1.5" BHCS).



- 9.) TIGHTEN HARDWARE AT MOUNTING POINTS, REASSEMBLE MACHINE AND LOWER OFF JACKSTANDS.

KEEP IN MIND OUR BUMPERS HAVE ACCESSORIES AND DIFFERENT STYLES! BAJA STYLE BUMPER WAS SHOWN IN INTRUCTIONS, BUT WE HAVE MX AND DX STYLE AS SHOWN BELOW. WINCH MOUNT AND HITCH RECIEVERS ARE AVAILABLE AS WELL AND ALL HAVE THE ABILITY TO BE ATTACHED TO THIS UNIVERSAL BASE.



IF YOU HAVE ANY QUESTIONS OR CONCERNS, FEEL FREE TO CONTACT US.

616-928-0616 – tech@racertech.com